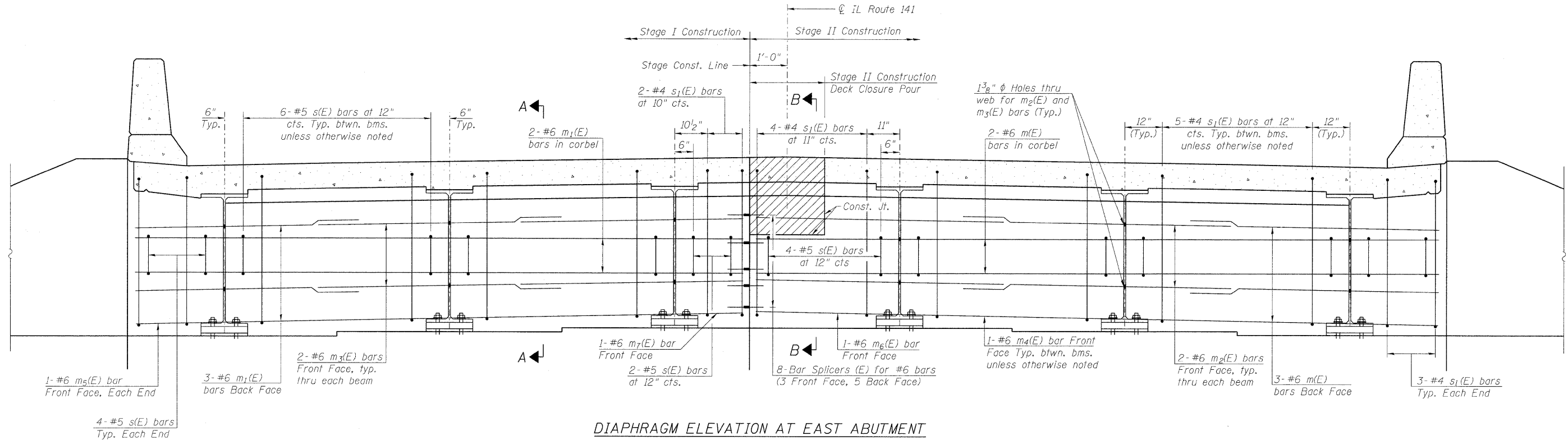


STATE OF ILLINOIS
DEPARTMENT OF TRANSPORTATION



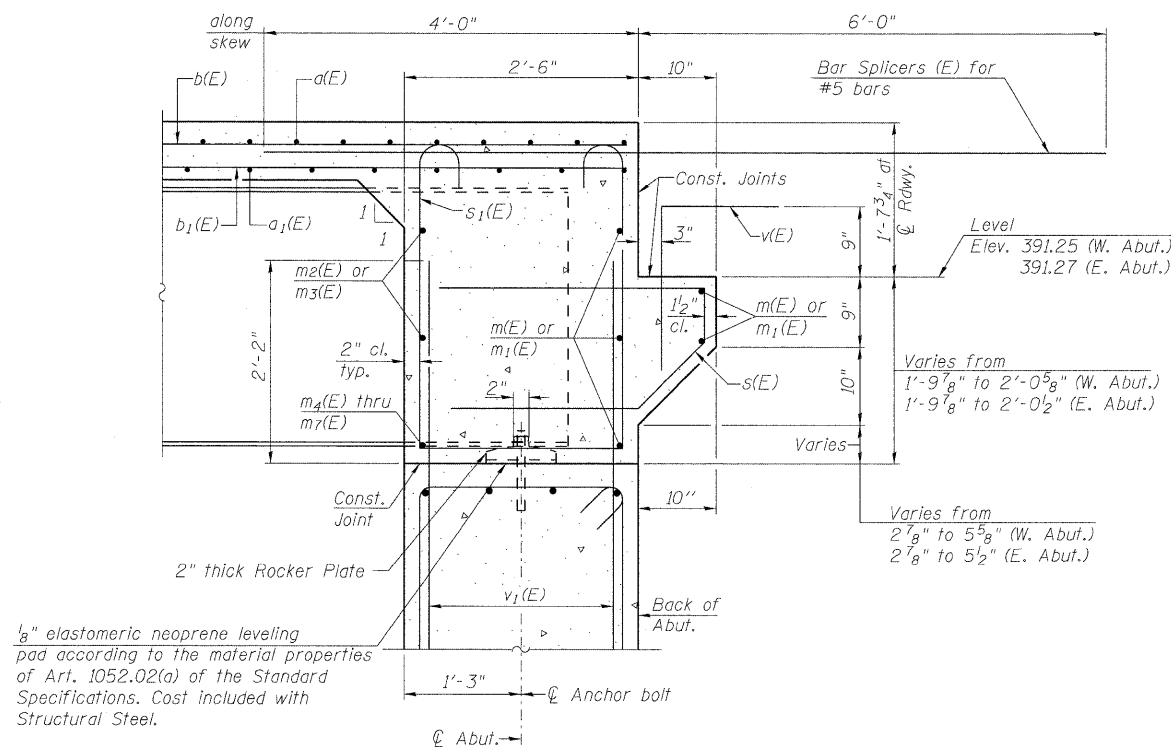
DIAPHRAGM ELEVATION AT EAST ABUTMENT

(Looking East)
(All horizontal dimensions at right angles to CL IL Rte 141)
(West Abutment mirrored about CL IL Rte 141)

Notes:

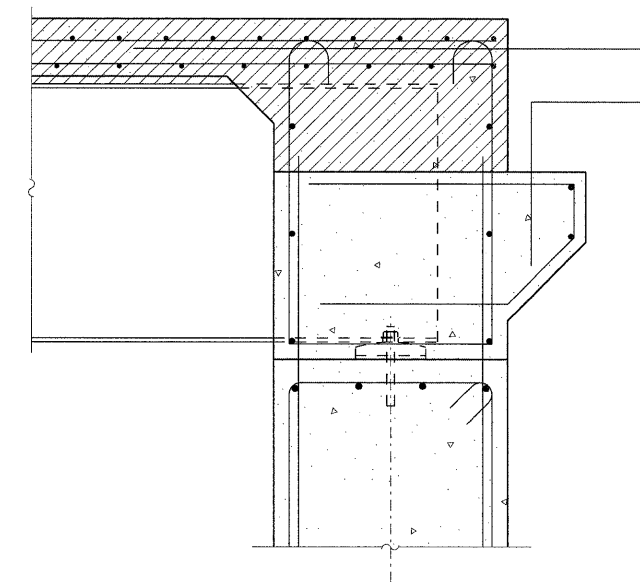
Reinforcement bars in diaphragm are billed with superstructure on sheet 8 of 17.
Concrete in diaphragm is included with Concrete Superstructure on sheet 8 of 17.
For details of bars $s(E)$ & $s_1(E)$ see sheet 8 of 17.
The $s(E)$ and $s_1(E)$ bars shall be placed parallel to the beams. Spacing for these bars shall be at right angles to the beams.
For location of holes thru web, see sheet 12 of 17.
Hatched area indicates block out to be poured during Stage II Construction Deck Closure Pour.

MIN. BAR LAP
#6 bar = 2'-9"



SECTION A-A

Dimensions at right angles to abutment, except as shown.



SECTION B-B

CONCRETE END DIAPHRAGMS
STRUCTURE NO. 097-0073

<p>LIN ENGINEERING, LTD. Consulting Engineers Chatham, Illinois</p>	SHEET NO. 11	F.A.P. RTE.	SECTION	COUNTY	TOTAL SHEETS	SHEET NO.	
	17 SHEETS	877	101B-1	WHITE	42	26	
		CONTRACT NO. 78084					
		FED. ROAD DIST. NO. ILLINOIS FED. AID PROJECT					