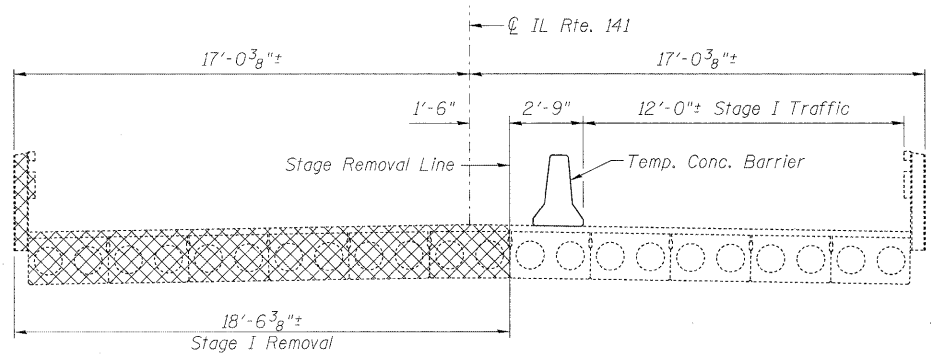
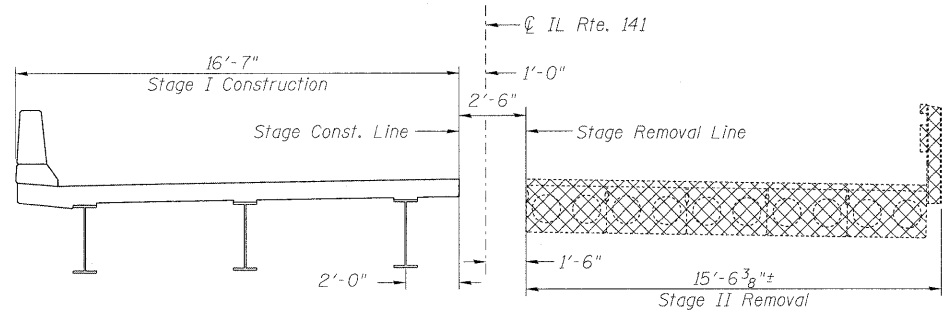


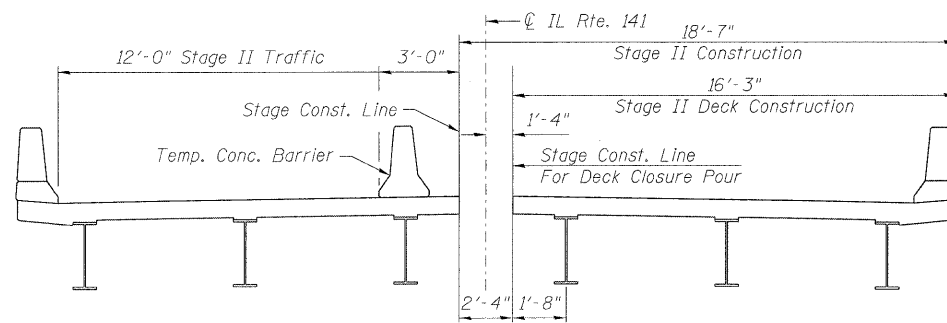
STATE OF ILLINOIS
DEPARTMENT OF TRANSPORTATION



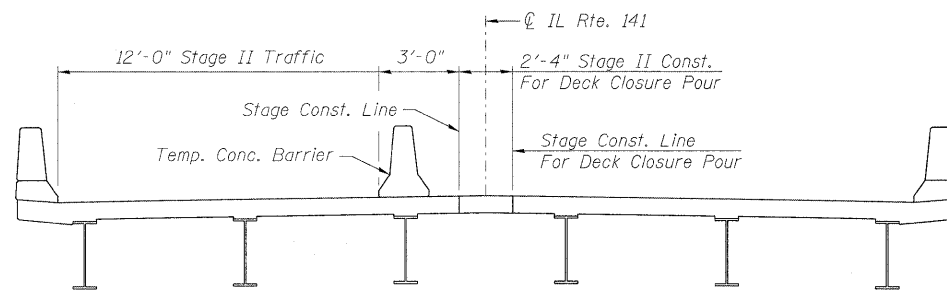
STAGE I REMOVAL & TRAFFIC



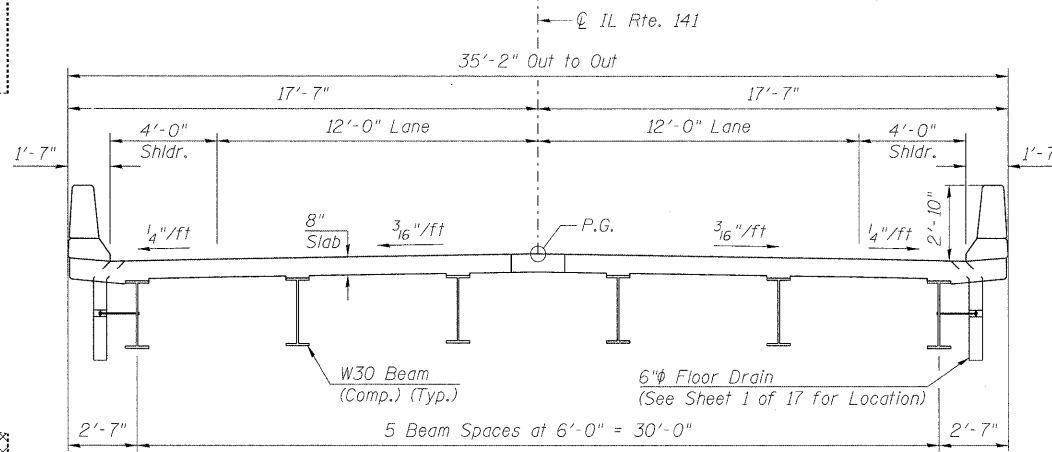
STAGE I CONSTRUCTION & STAGE II REMOVAL



STAGE II CONSTRUCTION & TRAFFIC

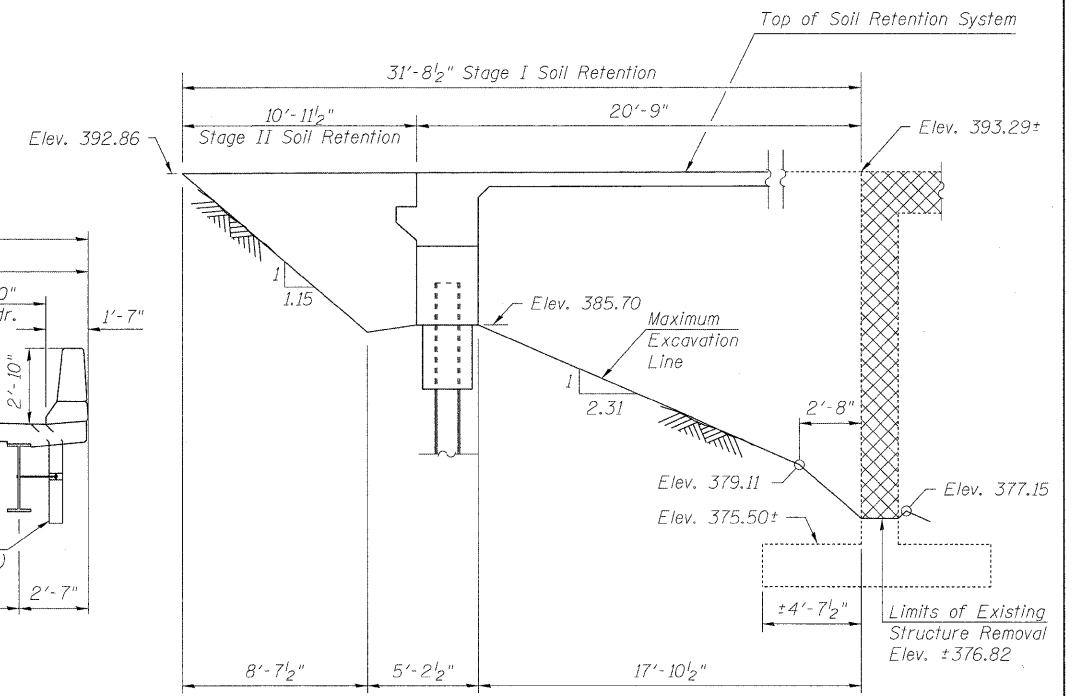


STAGE II CONSTRUCTION & TRAFFIC
FOR DECK CLOSURE POUR



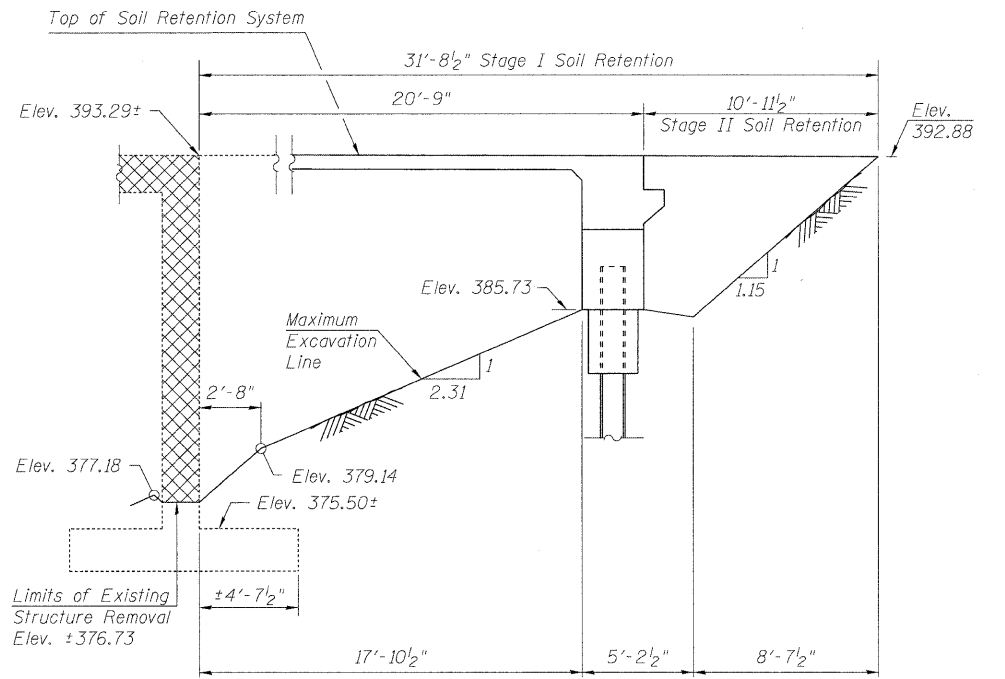
PROPOSED CROSS-SECTION

- Notes:
1. Cross Hatched areas indicate removal of existing structure.
 2. Location of Stage Removal & Construction lines is also applicable to abutments.
 3. See roadway plans for quantity of Temporary Concrete Barrier.
 4. See sheet 4 of 17 for details of Temporary Concrete Barrier.
 5. All cross sections are Looking East.
 6. Removal of existing bridge railing and bituminous wearing surface is included with Removal of Existing Structure.
 7. A cantilevered sheet piling design does not appear feasible and additional members or other retention systems may be necessary. The Contractor shall submit a temporary soil retention system design including plan details and calculations for review and acceptance by the Engineer.



TEMPORARY SOIL RETENTION SYSTEM AT WEST ABUT.

(Dimensions measured along Stage Construction Line)



TEMPORARY SOIL RETENTION SYSTEM AT EAST ABUT.

(Dimensions measured along Stage Construction Line)

STAGE CONSTRUCTION DETAILS
STRUCTURE NO. 097-0073

	SHEET NO. 3	F.A.P. RTE. 877	SECTION 101B-1	COUNTY WHITE	TOTAL SHEETS 42	SHEET NO. 18
	17 SHEETS	CONTRACT NO. 78084				
Designed By: SSL Checked By: ESH Date: 3/2009 Files: 097-0073.dgn		FED. ROAD DIST. NO. ILLINOIS FED. AID PROJECT				