

STATE OF ILLINOIS
DEPARTMENT OF TRANSPORTATION

GENERAL NOTES

Fasteners shall be AASHTO M164 Type 3, mechanically galvanized bolts. Bolts 7/8 in. ϕ , holes 15/16 in. ϕ , unless otherwise noted.

Calculated weight of Structural Steel = 90,430 lbs (AASHTO M270, Grade 50W) 520 (AASHTO M270, Grade 36)

All structural steel shall be AASHTO M270 Grade 50W (except Temp. Bracing).

No field welding is permitted except as specified in the contract documents.

Reinforcement bars shall conform to the requirements of ASTM A 706 Gr 60. See Special Provisions.

Reinforcement bars designated (E) shall be epoxy coated.

Structural steel shall only be painted for a distance equal to the depth of embedment into the concrete cap plus 3 inches. Those areas shall be primed in the shop with a Department approved zinc rich primer. No field painting shall be required. All structural steel shall be cleaned as specified in the Special Provision for "Surface Preparation and Painting Requirements for Weathering Steel".

Layout of slope protection system may be varied in the field to suit ground conditions as directed by the Engineer.

Slipforming of the parapet is not allowed.

The Contractor is advised that the existing PPC Deck Beams are in a deteriorated condition with reduced load carrying capacity. It is the Contractor's responsibility to account for the condition of the beams when developing construction procedures for removal and replacement of the superstructure.

Current Ratings on File for Existing Structure

Inventory: HS 21.5
Operating: HS 35.9
Live Load Restrictions: No

Inventory and Operating Ratings and Live Load Restrictions are provided for information only. Inventory and Operating Ratings are based on HS loading and configuration. Live Load restrictions are based on Illinois legal loads and configurations. The Ratings and Live Load Restrictions are not necessarily representative of capacities to support the Contractor's equipment.

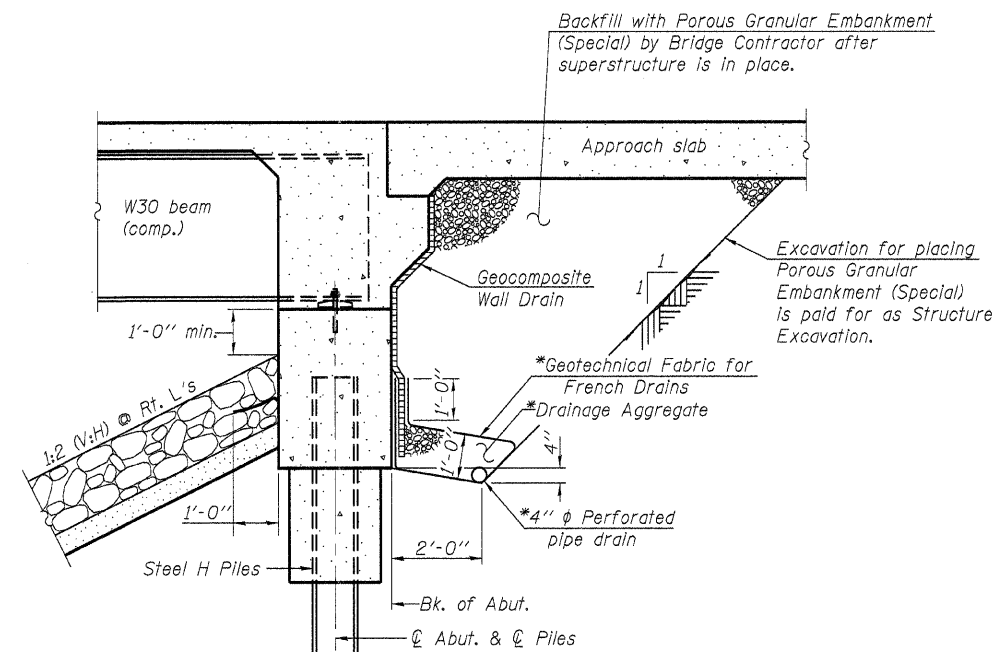
The Contractor is advised that the existing structure contains members that are in a deteriorated condition with reduced load carrying capacity. It is the Contractor's responsibility to account for the condition of the existing structure when developing construction procedures for the complete or partial removal, or replacement of the structure. An Existing Structure Information Package is available upon request as noted in the special provisions.

The Contractor shall submit Structural Assessment Report(s) as required for the Contractor's means and methods of construction. See Special Provisions.

TOTAL BILL OF MATERIAL

ITEM	UNIT	SUPER	SUB	TOTAL
Porous Granular Embankment, Special	Cu. Yd.	-	128	128
Stone RipRap, Class A3	Sq. Yd.	-	40	40
Stone RipRap, Class A4	Sq. Yd.	-	889	889
Filter Fabric	Sq. Yd.	-	929	929
Removal of Existing Structures	Each	-	-	1
Structure Excavation	Cu. Yd.	-	277	277
Floor Drains	Each	10	-	10
Concrete Structures	Cu. Yd.	-	48.5	48.5
Concrete Superstructure	Cu. Yd.	187.7	-	187.7
** Bridge Deck Grooving	Sq. Yd.	486	-	486
Concrete Encasement	Cu. Yd.	-	4.2	4.2
** Protective Coat	Sq. Yd.	620	-	620
Furnishing and Erecting Structural Steel	Lump Sum	1	-	1
Stud Shear Connectors	Each	1782	-	1782
Reinforcement Bars, Epoxy Coated	Pound	51980	6260	58240
Bar Splicers	Each	722	100	822
Furnishing Steel Piles HP12X63	Foot	-	325	325
Driving Piles	Foot	-	325	325
Test Pile Steel HP12x63	Each	-	2	2
Name Plates	Each	1	-	1
Anchor Bolts, 1"	Each	-	24	24
Geocomposite Wall Drain	Sq. Yd.	-	75	75
Pipe Underdrains for Structures 4"	Foot	-	160	160
Asbestos Bearing Pad Removal	Each	22	-	22
Temporary Soil Retention System	Sq. Ft.	-	551	551

**Includes Approach Slab



SECTION THRU ABUTMENT
(Horiz. dim. @ Rt. L's)

*Included in the cost of Pipe Underdrains for Structures.

Note:

All drainage system components shall extend to 2'-0" from the end of each wingwall except an outlet pipe shall extend until intersecting with the side slopes. The pipes shall drain into concrete headwalls. (See Article 601.05 of the Standard Specifications and Highway Standard 601101).

STATION 239+85.00
BUILT 20 BY
STATE OF ILLINOIS
F.A.P. RT. 877 SEC. 101B-1
LOADING HL-93
STRUCTURE NO. 097-0073

NAME PLATE
See Std. 515001

GENERAL NOTES AND DETAILS
STRUCTURE NO. 097-0073

LIN ENGINEERING, LTD. Consulting Engineers Chattian, Illinois	SHEET NO. 2 17 SHEETS	F.A.P. RTE.	SECTION	COUNTY	TOTAL SHEETS	SHEET NO.
		877	101B-1	WHITE	42	17
		CONTRACT NO. 78084				
		FED. ROAD DIST. NO. ILLINOIS FED. AID PROJECT				