

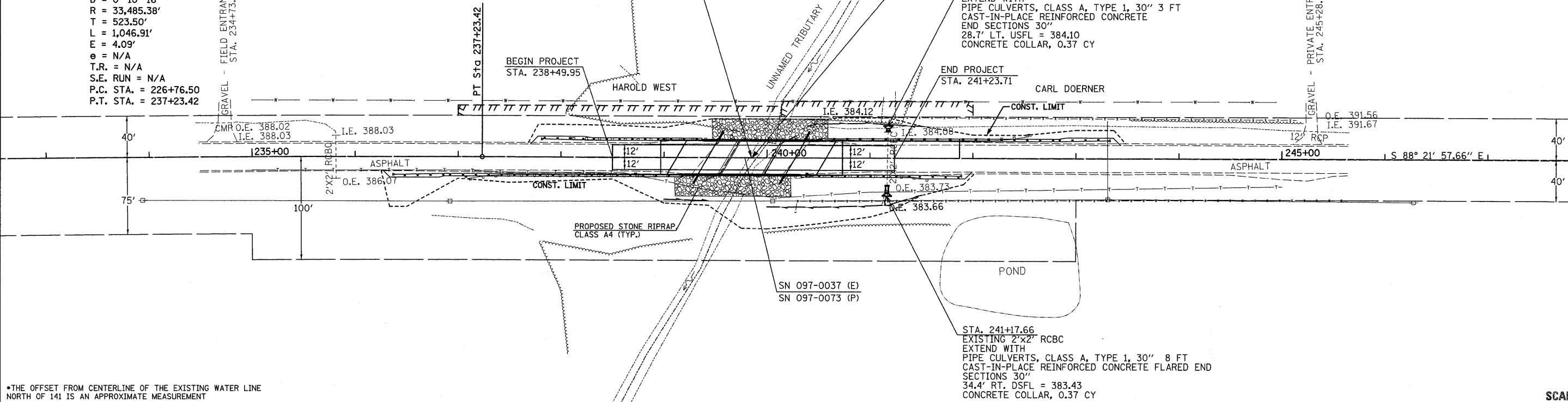
PROP. IL 141
 PI STA. = 232+00.00
 $\Delta = 1^\circ 47' 29''$ (RT)
 $D = 0^\circ 10' 16''$
 $R = 33,485.38'$
 $T = 523.50'$
 $L = 1,046.91'$
 $E = 4.09'$
 $e = N/A$
 $T.R. = N/A$
 $S.E. RUN = N/A$
 $P.C. STA. = 226+76.50$
 $P.T. STA. = 237+23.42$

EXISTING STRUCTURE (097-0037)
 43'-5 1/2" BK. TO BK. ABUTMENTS
 32'-6" CLEAR WIDTH
 30° SKEW
 STA. 239+85 (IL 141)

PROPOSED STRUCTURE (097-0073)
 85' SINGLE-SPAN STEEL BEAM BRIDGE
 30° SKEW
 STA. 239+85 (IL 141)

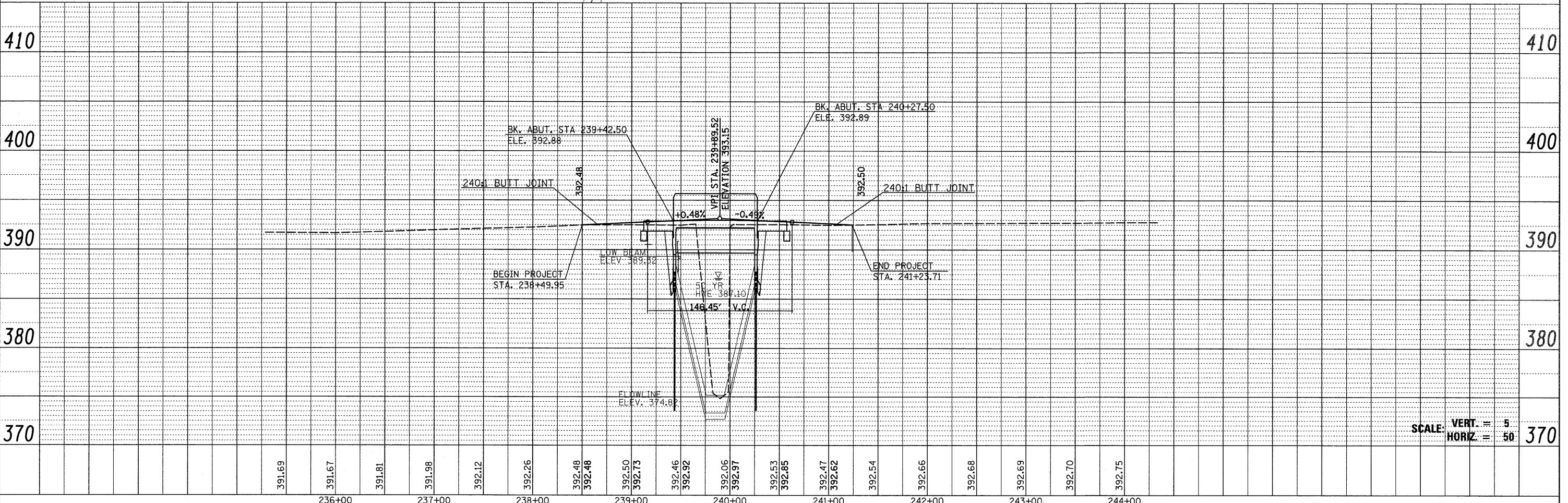
STA. 241+17.66
 EXISTING 2'x2' RCBC
 EXTEND WITH
 PIPE CULVERTS, CLASS A, TYPE 1, 30" 3 FT
 CAST-IN-PLACE REINFORCED CONCRETE
 END SECTIONS 30"
 28.7' LT. USFL = 384.10
 CONCRETE COLLAR, 0.37 CY

STA. 241+17.66
 EXISTING 2'x2' RCBC
 EXTEND WITH
 PIPE CULVERTS, CLASS A, TYPE 1, 30" 8 FT
 CAST-IN-PLACE REINFORCED CONCRETE FLARED END
 SECTIONS 30"
 34.4' RT. DSFL = 383.43
 CONCRETE COLLAR, 0.37 CY



*THE OFFSET FROM CENTERLINE OF THE EXISTING WATER LINE NORTH OF 141 IS AN APPROXIMATE MEASUREMENT

SCALE: 1" = 50'



SCALE: VERT. = 5
 HORIZ. = 50

DATE	
BY	
SURVEYED	
ALIGNED	
CHECKED	
RT. OF WAY CHECKED	
CADD FILE NAME	
PLAN	
NOTE BOOK	
NO.	

DATE	
BY	
SURVEYED	
PROFILES CHECKED	
BRIDGE NOTED	
STRUCTURE NOTATIONS CHFD	
PROFILE	
NOTE BOOK	
NO.	

FILE NAME =	USER NAME = *USER*	DESIGNED -	REVISED -	STATE OF ILLINOIS DEPARTMENT OF TRANSPORTATION	PLAN AND PROFILE IL 141 OVER TRIBUTARY TO CANE CREEK			F.A.P. RTE. 877	SECTION 101B-1	COUNTY WHITE	TOTAL SHEETS 42	SHEET NO. 10
*FILE#		DRAWN -	REVISED -		SCALE:	SHEET NO.	OF	SHEETS	STA. 238+49.95 TO STA. 241+23.71	CONTRACT NO. 78084		
		CHECKED -	REVISED -							ILLINOIS FED. AID PROJECT		
		DATE -	REVISED -									