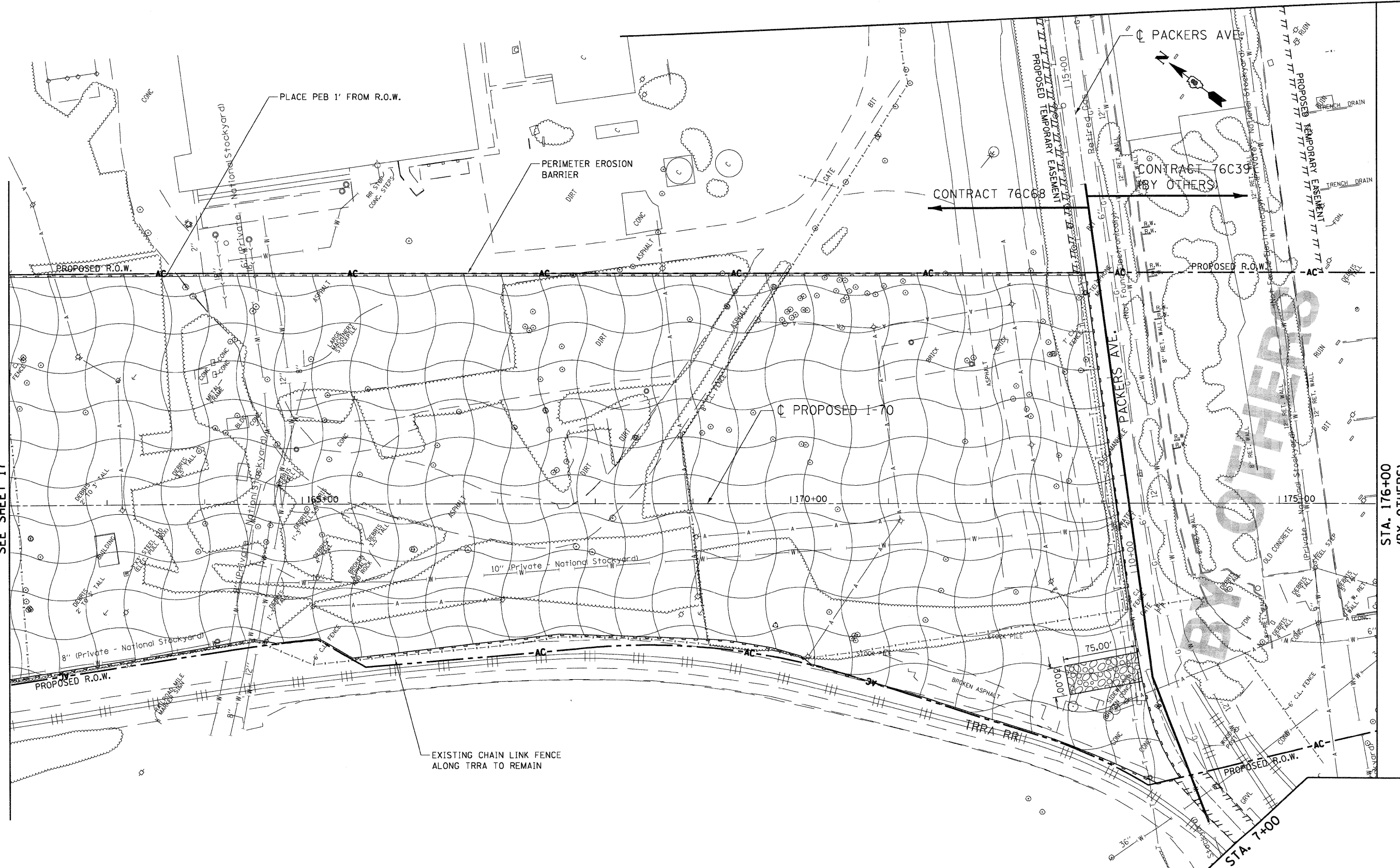




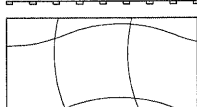
D:\CONV\99\ACT1\1.DGN, \ORCON\28\BORDER\1.DGN, \ORCON\99\LAYO\1.DGN, \ORCON\99\LEG\1.DGN, \ORCON\28\FRONT\1.DGN, \ORCON\28\FRONT\1.DGN
 02/05/2009, 17:48:14
 F:\000220800\20868-00\COMMON\1\TEMP\1\1.DGN, \ORCON\28\FRONT\1.DGN, \ORCON\28\FRONT\1.DGN, \ORCON\28\FRONT\1.DGN
 02/05/2009, 17:48:14

MATCH LINE STA. 162+00
 SEE SHEET 17

STA. 176+00
 (BY OTHERS)



EROSION CONTROL LEGEND

-  INLET FILTERS
-  STABILIZED CONSTRUCTION ENTRANCE
-  PERIMETER EROSION BARRIER (PEB)
 DURING CONSTRUCTION TEMPORARY EROSION CONTROL SEEDING SHALL BE PLACED.
 IN ADDITION, AT CONCLUSION OF CONSTRUCTION
 - SEEDING, CLASS 7
 - MULCH, METHOD 2

FILE NAME =	USER NAME = #USERS	DESIGNED - JB	REVISED -
#FILE#		DRAWN - JB	REVISED -
PLOT SCALE = #SCALE#		CHECKED - ACL	REVISED -
PLOT DATE = #DATE#		DATE - 08/07/09	REVISED -

STATE OF ILLINOIS
DEPARTMENT OF TRANSPORTATION
 I-70 CONNECTION

EROSION AND SEDIMENT CONTROL PLAN			
STA. 162+00 TO STA. 176+00			
SCALE: 1"=50'	SHEET NO. OF SHEETS	STA. TO STA.	

F.A.P. RTE.	SECTION	COUNTY	TOTAL SHEETS	SHEET NO.
998	82-IDM-1	ST. CLAIR	25	18
FED. ROAD DIST. NO.			ILLINOIS FED. AID PROJECT	
CONTRACT NO. 76C68				

