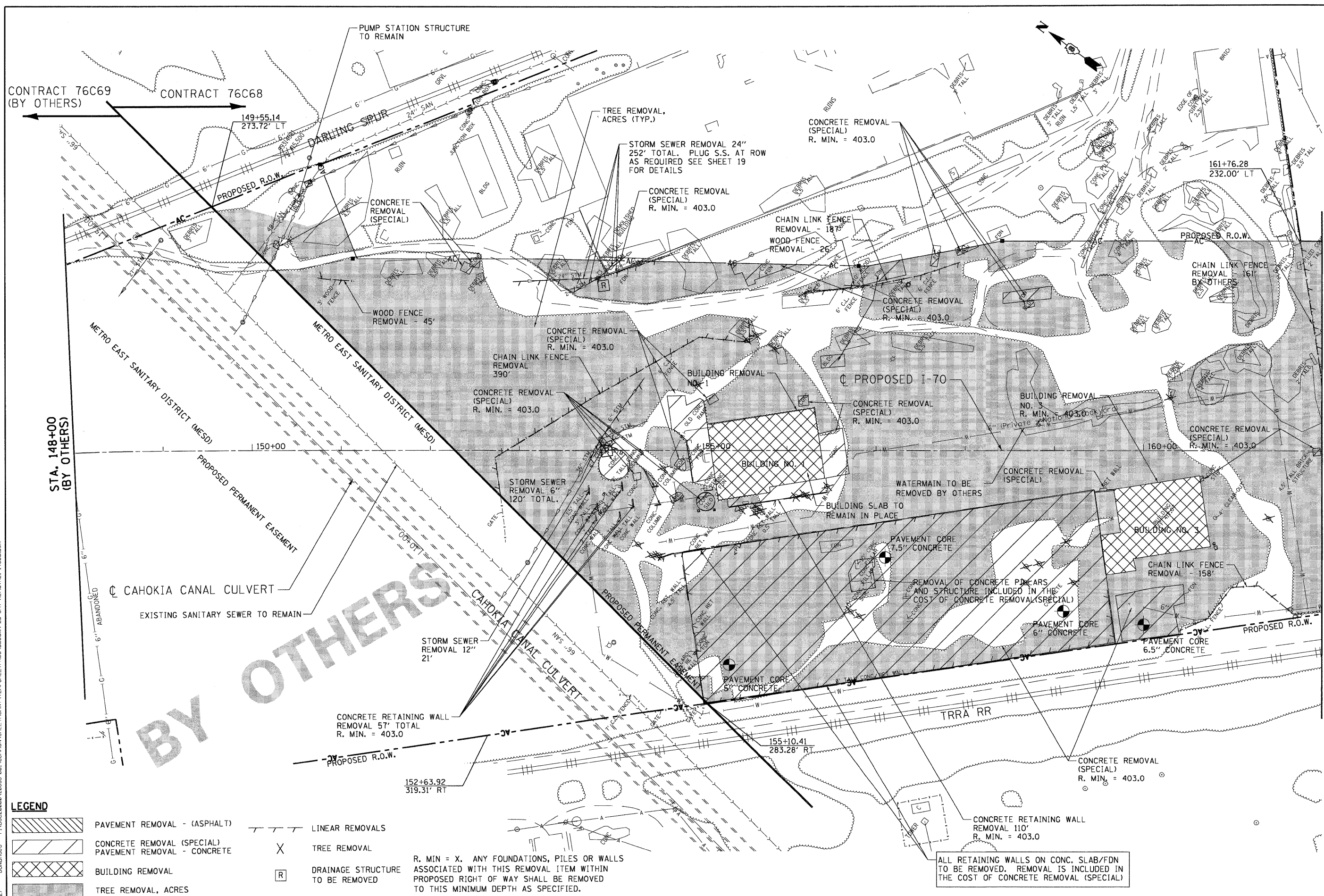


\\DBCONN-99-MOTIF1.DGN, \\DBCONN-99-LAYOUT1.DGN, \\DBCONN-99-LEGEND1.DGN, \\DBCONN-28-REMOVAL1.DGN, \\DBCONN-28-REMOVAL2.DGN, \\DBCONN-28-SIT-REMOVAL1.DGN, \\DBCONN-28-SIT-REMOVAL2.DGN, \\DBCONN-28-BORDER.DGN, \\DBCONN-28-LEGEND.DGN, \\DBCONN-28-REMOVAL1.DGN, \\DBCONN-28-REMOVAL2.DGN, \\DBCONN-28-SIT-REMOVAL1.DGN, \\DBCONN-28-SIT-REMOVAL2.DGN, \\DBCONN-28-BORDER.DGN, \\DBCONN-28-LEGEND.DGN, \\DBCONN-28-REMOVAL1.DGN, \\DBCONN-28-REMOVAL2.DGN, \\DBCONN-28-SIT-REMOVAL1.DGN, \\DBCONN-28-SIT-REMOVAL2.DGN



BY OTHERS

LEGEND	
	PAVEMENT REMOVAL - (ASPHALT)
	CONCRETE REMOVAL (SPECIAL) PAVEMENT REMOVAL - CONCRETE
	BUILDING REMOVAL
	TREE REMOVAL, ACRES
	LINEAR REMOVALS
	TREE REMOVAL
	DRAINAGE STRUCTURE TO BE REMOVED

R. MIN = X. ANY FOUNDATIONS, PILES OR WALLS ASSOCIATED WITH THIS REMOVAL ITEM WITHIN PROPOSED RIGHT OF WAY SHALL BE REMOVED TO THIS MINIMUM DEPTH AS SPECIFIED.

ALL RETAINING WALLS ON CONC. SLAB/FDN TO BE REMOVED. REMOVAL IS INCLUDED IN THE COST OF CONCRETE REMOVAL (SPECIAL)

FILE NAME =	USER NAME = #USER#	DESIGNED - JB	REVISED -	STATE OF ILLINOIS DEPARTMENT OF TRANSPORTATION I-70 CONNECTION	DEMOLITION PLAN STA. 148+00 TO STA. 162+00	F.A.P. RTE. 998	SECTION 82-1DM-1	COUNTY ST. CLAIR	TOTAL SHEETS 25	SHEET NO. 9
#FILE#	PLOT SCALE = #SCALE#	CHECKED - ACL	REVISED -			SCALE: 1"=50'	SHEET NO. OF SHEETS STA. TO STA.	FED. ROAD DIST. NO. [ILLINOIS] FED. AID PROJECT	CONTRACT NO. 76C68	
TENG & ASSOCIATES, INC. ENGINEERS/ARCHITECTS/PLANNERS CHICAGO, ILLINOIS		DATE - 08/07/09	REVISED -							