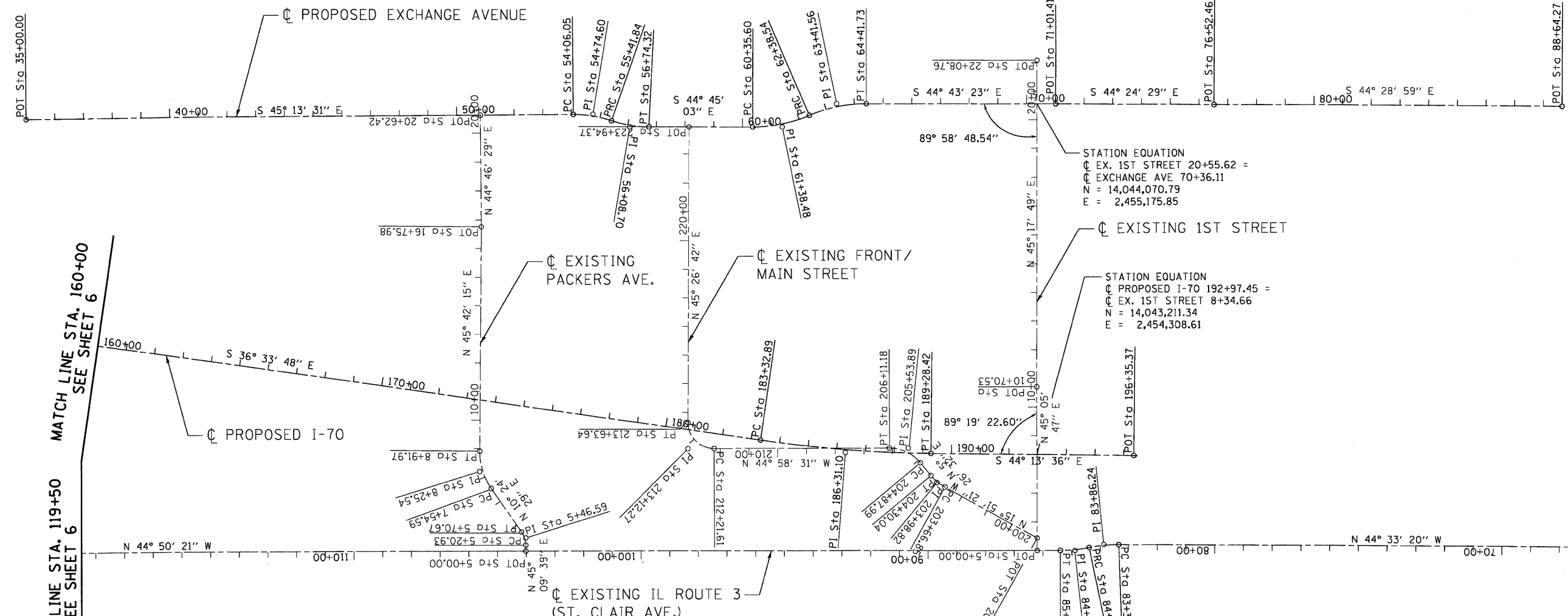


PROP. CURVE PR\_EXCH-1  
PI STA. = 54+74.60  
N = 14,045,142.47  
E = 2,454,061.46  
Δ = 19° 27' 04" (RT)  
D = 14° 19' 26"  
R = 400.00'  
T = 68.56'  
L = 135.80'  
E = 5.83'  
e = NC  
T.R. = N/A  
S.E. RUN = N/A  
P.C. STA. = 54+06.05  
N = 14,045,190.75  
E = 2,454,012.79  
P.T. STA. = 55+41.84  
N = 14,045,080.73  
E = 2,454,091.27

PROP. CURVE PR\_EXCH-2  
PI STA. = 56+08.70  
N = 14,045,020.53  
E = 2,454,120.34  
Δ = 18° 58' 37" (LT)  
D = 14° 19' 26"  
R = 400.00'  
T = 66.85'  
L = 132.48'  
E = 5.55'  
e = NC  
T.R. = N/A  
S.E. RUN = N/A  
P.C. STA. = 55+41.84  
N = 14,045,080.73  
E = 2,454,091.27  
P.T. STA. = 56+74.32  
N = 14,044,973.05  
E = 2,454,167.40

PROP. CURVE PR\_EXCH-3  
PI STA. = 61+38.48  
N = 14,044,643.41  
E = 2,454,494.18  
Δ = 23° 15' 21" (LT)  
D = 11° 27' 33"  
R = 500.00'  
T = 102.89'  
L = 202.95'  
E = 10.48'  
e = NC  
T.R. = N/A  
S.E. RUN = N/A  
P.C. STA. = 60+35.60  
N = 14,044,716.48  
E = 2,454,421.75  
P.T. STA. = 62+38.54  
N = 14,044,604.88  
E = 2,454,589.58

PROP. CURVE PR\_EXCH-4  
PI STA. = 63+41.56  
N = 14,044,566.30  
E = 2,454,685.10  
Δ = 23° 17' 01" (RT)  
D = 11° 27' 33"  
R = 500.00'  
T = 103.02'  
L = 203.19'  
E = 10.50'  
e = NC  
T.R. = N/A  
S.E. RUN = N/A  
P.C. STA. = 62+38.54  
N = 14,044,604.88  
E = 2,454,589.58  
P.T. STA. = 64+41.73  
N = 14,044,493.11  
E = 2,454,757.59



MATCH LINE STA. 119+50  
SEE SHEET 6

MATCH LINE STA. 160+00  
SEE SHEET 6

STA. 65+00 (BY OTHERS)

EXIST. CURVE EX\_PACK-1  
PI STA. = 5+46.59  
N = 14,044,271.33  
E = 2,452,848.31  
Δ = 34° 45' 10" (LT)  
D = 69° 52' 22"  
R = 82.00'  
T = 25.66'  
L = 49.74'  
E = 3.92'  
e = NC  
T.R. = N/A  
S.E. RUN = N/A  
P.C. STA. = 5+20.93  
N = 14,044,253.23  
E = 2,452,830.12  
P.T. STA. = 5+70.67  
N = 14,044,296.57  
E = 2,452,852.95

EXIST. CURVE EX\_PACK-2  
PI STA. = 8+25.54  
N = 14,044,547.24  
E = 2,452,898.99  
Δ = 35° 17' 45" (RT)  
D = 25° 41' 35"  
R = 223.00'  
T = 70.95'  
L = 137.37'  
E = 11.01'  
e = NC  
T.R. = N/A  
S.E. RUN = N/A  
P.C. STA. = 7+54.59  
N = 14,044,477.46  
E = 2,452,886.18  
P.T. STA. = 8+91.97  
N = 14,044,596.78  
E = 2,452,949.77

EXIST. CURVE PR\_FRM-1  
PI STA. = 203+98.82  
N = 14,043,389.71  
E = 2,453,993.69  
Δ = 21° 17' 53" (RT)  
D = 33° 42' 12"  
R = 170.00'  
T = 31.97'  
L = 63.19'  
E = 2.98'  
e = NC  
T.R. = N/A  
S.E. RUN = N/A  
P.C. STA. = 203+66.85  
N = 14,043,358.96  
E = 2,454,002.42  
P.T. STA. = 204+30.04  
N = 14,043,591.44  
E = 2,453,996.72

EXIST. CURVE PR\_FRM-2  
PI STA. = 205+53.89  
N = 14,043,544.82  
E = 2,454,008.47  
Δ = 50° 25' 03" (LT)  
D = 40° 55' 32"  
R = 140.00'  
T = 65.91'  
L = 123.19'  
E = 14.74'  
e = NC  
T.R. = N/A  
S.E. RUN = N/A  
P.C. STA. = 204+87.99  
N = 14,043,479.21  
E = 2,454,002.22  
P.T. STA. = 206+11.18  
N = 14,043,591.44  
E = 2,453,961.89

EXIST. CURVE PR\_FRM-3  
PI STA. = 213+12.27  
N = 14,044,087.40  
E = 2,453,446.35  
Δ = 90° 25' 14" (RT)  
D = 63° 39' 43"  
R = 90.00'  
T = 90.66'  
L = 142.03'  
E = 37.75'  
e = NC  
T.R. = N/A  
S.E. RUN = N/A  
P.C. STA. = 212+21.61  
N = 14,044,023.26  
E = 2,453,530.43  
P.T. STA. = 213+63.64  
N = 14,044,151.01  
E = 2,453,530.96

PROP. CURVE I7004  
PI STA. = 186+31.10  
N = 14,043,689.47  
E = 2,453,843.21  
Δ = 7° 39' 48" (LT)  
D = 11° 17' 33"  
R = 4,452.50'  
T = 298.21'  
L = 595.53'  
E = 9.98'  
e = 3.3%  
T.R. = N/A  
S.E. RUN = N/A  
P.C. STA. = 183+32.89  
N = 14,043,929.00  
E = 2,453,665.57  
P.T. STA. = 189+28.42  
N = 14,043,475.78  
E = 2,454,051.21

PROP. CURVE ST\_CLR-5  
PI STA. = 83+86.24  
N = 14,042,825.09  
E = 2,454,249.99  
Δ = 11° 54' 06" (LT)  
D = 11° 27' 33"  
R = 500.00'  
T = 52.12'  
L = 103.86'  
E = 2.71'  
e = NC  
T.R. = N/A  
S.E. RUN = N/A  
P.C. STA. = 83+34.12  
N = 14,042,787.95  
E = 2,454,286.56  
P.T. STA. = 84+37.98  
N = 14,042,853.89  
E = 2,454,206.55

PROP. CURVE ST\_CLR-6  
PI STA. = 84+88.85  
N = 14,042,881.99  
E = 2,454,164.16  
Δ = 11° 37' 06" (RT)  
D = 11° 27' 33"  
R = 500.00'  
T = 50.87'  
L = 101.39'  
E = 2.58'  
e = NC  
T.R. = N/A  
S.E. RUN = N/A  
P.C. STA. = 84+37.98  
N = 14,042,853.89  
E = 2,454,206.55  
P.T. STA. = 85+39.37  
N = 14,042,918.06  
E = 2,454,128.29

FILE NAME =  
 USER NAME = #USER#  
 DESIGNED - JJB  
 REVISED -  
 DRAWN - JJB  
 REVISED -  
 CHECKED - ACL  
 REVISED -  
 DATE - 08/07/09  
 REVISED -  
 PLOT SCALE = #SCALE#  
 CHECKED -  
 DATE -  
 PLOT DATE = #DATE#



**STATE OF ILLINOIS  
DEPARTMENT OF TRANSPORTATION**

I-70 CONNECTION

**ALIGNMENTS, TIES &  
BENCHMARKS 2**

SCALE: 1"=200' SHEET NO. OF SHEETS STA. TO STA.

F.A.P. RTE.	SECTION	COUNTY	TOTAL SHEETS	SHEET NO.
998	82-IDM-1	ST. CLAIR	25	7
CONTRACT NO. 76C68				
ILLINOIS FED. AID PROJECT				