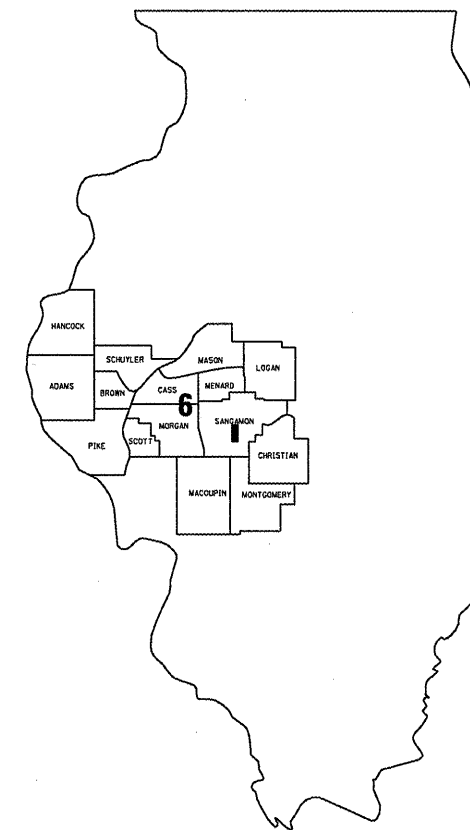


FOR INDEX OF SHEETS AND HIGHWAY
STANDARDS, SEE SHEET 2.

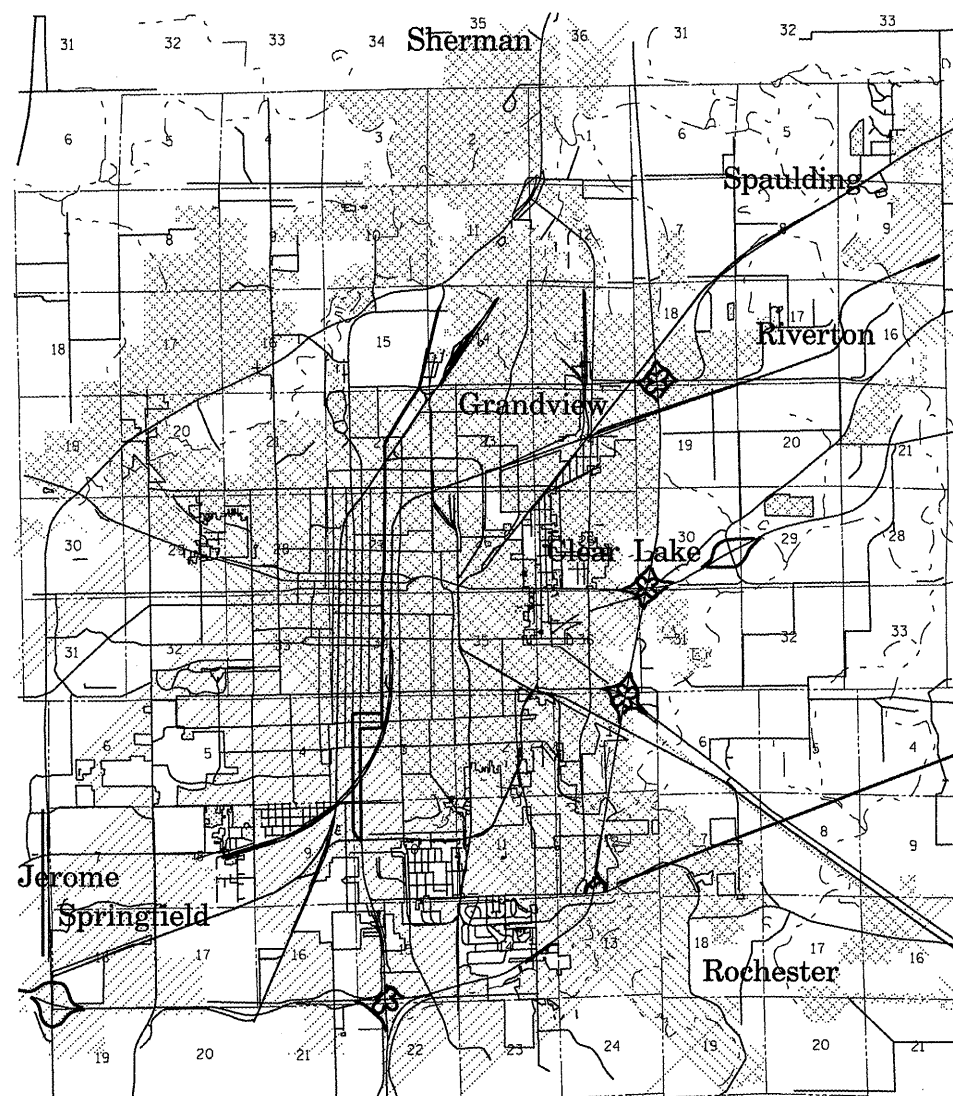
STATE OF ILLINOIS
DEPARTMENT OF TRANSPORTATION
DIVISION OF HIGHWAYS

CONTRACT: 72D13
SHEET 1 OF 10

**PROPOSED
HIGHWAY PLANS**
FAI 55 (I-55)
**SECTION D 6 REHAB BDGE PAINTING 2010
SANGAMON COUNTY**
C96-116-10 / D96-116-10



LOCATION OF SECTION INDICATED THUS: ■



EXIT 94
SN 084-0082
SN 084-0083
STEVENSON DRIVE

NET LENGTH OF SEC = .5 MILE

J. U. L. I. E.
JOINT UTILITY LOCATION INFORMATION FOR EXCAVATION
1-800-892-0123

BRIDGE INSPECTION ENGINEER: DAVE COPENBARGER
PHONE: (217) 785-5306

CONTRACT NO. 72D13

STATE OF ILLINOIS
DEPARTMENT OF TRANSPORTATION
DIVISION OF HIGHWAYS

SUBMITTED August 18 20 09

Roger D. Prickett
DEPUTY DIRECTOR OF HIGHWAYS, REGION FOUR ENGINEER

October 2, 20 09

Charles J. Ingersoll
ENGINEER OF DESIGN AND ENVIRONMENT

October 2, 20 09

Christine M. Reed
DIRECTOR, DIVISION OF HIGHWAYS

INDEX OF SHEETS:

1
COVER SHEET

2
INDEX, HIGHWAY STANDARDS, & GENERAL NOTES

3
SUMMARY OF QUANTITIES

4-8
EXISTING PLANS, SN 084-0082 AND 084-0083

9
DETOUR SIGNING PLAN

10
MESSAGE BOARD PLACEMENT

STANDARDS

701101-02

701106-02

701400-03

701401-05

701411-05

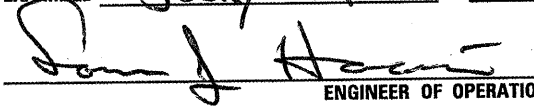
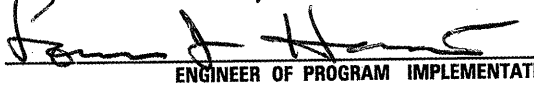

701451

701901-01

GENERAL NOTES:

CLEANING AND PAINTING OF THE EXISTING STRUCTURAL STEEL SHALL BE AS SPECIFIED IN THE SPECIAL PROVISIONS FOR "CLEANING AND PAINTING EXISTING STEEL STRUCTURES". ALL EXISTING STEEL SHALL BE CLEANED PER NEAR WHITE BLAST CLEANING - SSPC-SP10. ALL EXISTING STEEL SHALL BE PAINTED ACCORDING TO THE REQUIREMENTS OF PAINT SYSTEM 5 - MCU. THE COLOR OF THE FINAL FINISH COAT FOR EXTERIOR AND BOTTOM FLANGE OF THE FASCIA BEAMS SHALL BE INTERSTATE GREEN, MUNSELL NO 7.5G 4/8. THE COLOR OF THE FINAL FINISH COAT FOR ALL INTERIOR STEEL SURFACES SHALL BE GRAY, MUNSELL NO 5B 7/1. THE SSPC-QP-1 AND SSPC-QP2 PAINTING CONTRACTOR CERTIFICATIONS WILL BE REQUIRED FOR THESE BRIDGES. THE USE OF AIR MONITORS WILL BE REQUIRED.

STRUCTURE NO 1 = 084-0082, STRUCTURE NO 2 = 084-0083

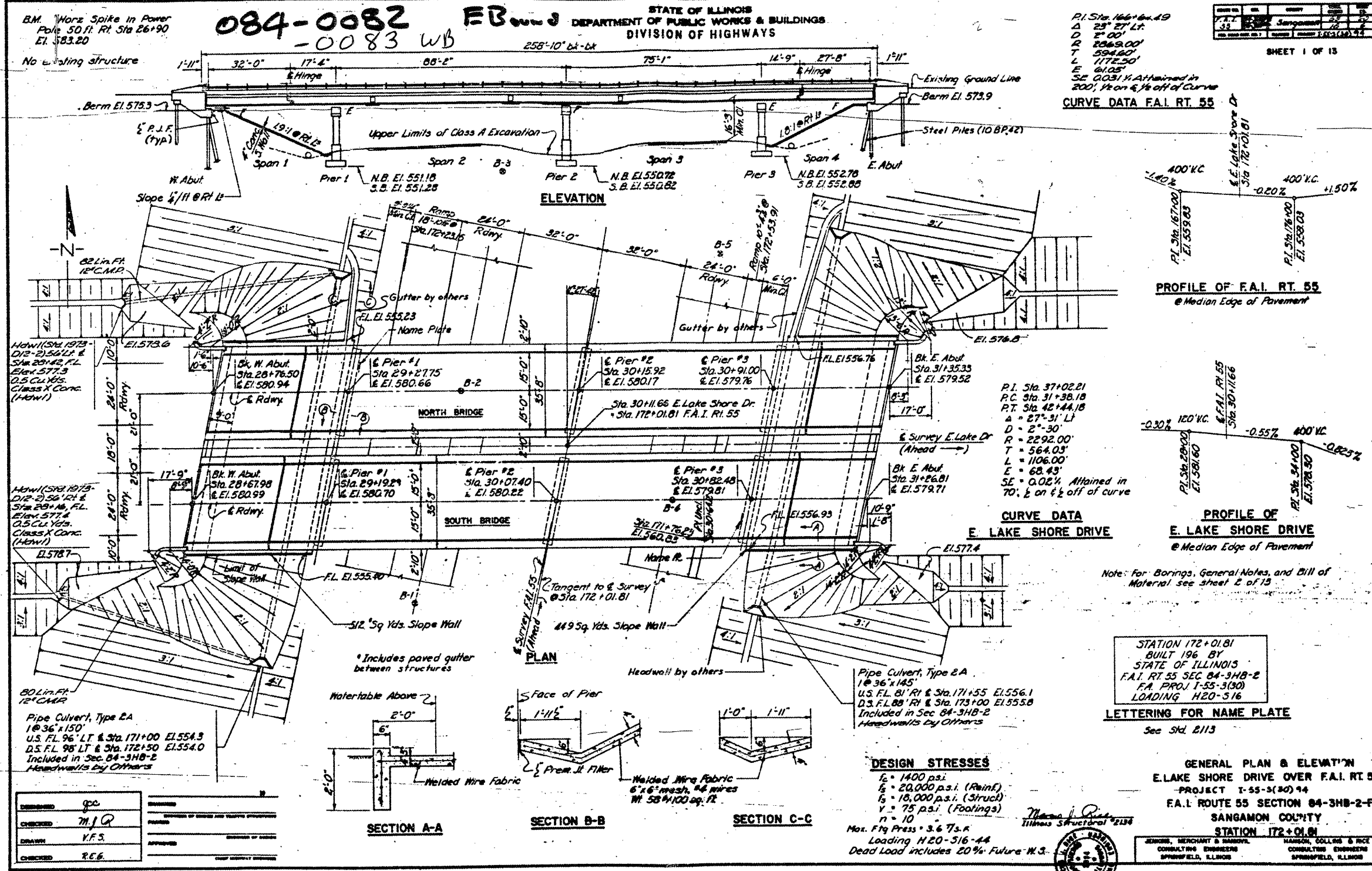
STATE OF ILLINOIS DEPARTMENT OF TRANSPORTATION DIVISION OF HIGHWAYS DISTRICT 6	
EXAMINED	<u>July 29</u> 20 <u>09</u>  ENGINEER OF OPERATIONS
EXAMINED	<u>July 29</u> 20 <u>09</u>  ENGINEER OF PROGRAM IMPLEMENTATION
EXAMINED	<u>August 4</u> 20 <u>09</u>  ENGINEER OF PROGRAM DEVELOPMENT

INDEX, STANDARDS, & NOTES
FAI 55 (I-55)
D-6 REHAB BDGE PAINTING 2010
SANGAMON COUNTY

S U M M A R Y O F Q U A N T I T I E S

CODE NO.	ITEM	UNIT	URBAN
			100% STATE
			SFTY-2A
			TOTAL QTY
50600600	CLEANING AND PAINTING STEEL BRIDGE, NO. 1	L SUM	1
50600700	CLEANING AND PAINTING STEEL BRIDGE, NO. 2	L SUM	1
50606401	CONTAINMENT AND DISPOSAL OF LEAD PAINT CLEANING RESIDUES NO. 1	L SUM	1
50606402	CONTAINMENT AND DISPOSAL OF LEAD PAINT CLEANING RESIDUES NO. 2	L SUM	1
67100100	MOBILIZATION	L SUM	1
70100820	TRAFFIC CONTROL AND PROTECTION, STANDARD 701451	L SUM	1
70100800	TRAFFIC CONTROL AND PROTECTION, STANDARD 701401	L SUM	1
70100420	TRAFFIC CONTROL AND PROTECTION, STANDARD 701411	EACH	1
70106800	CHANGEABLE MESSAGE SIGN	CAL MO	5
X0324952	DETOUR SIGNING	L SUM	1
X0325702	NIGHTTIME WORK ZONE LIGHTING	L SUM	1

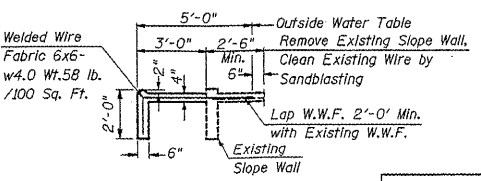
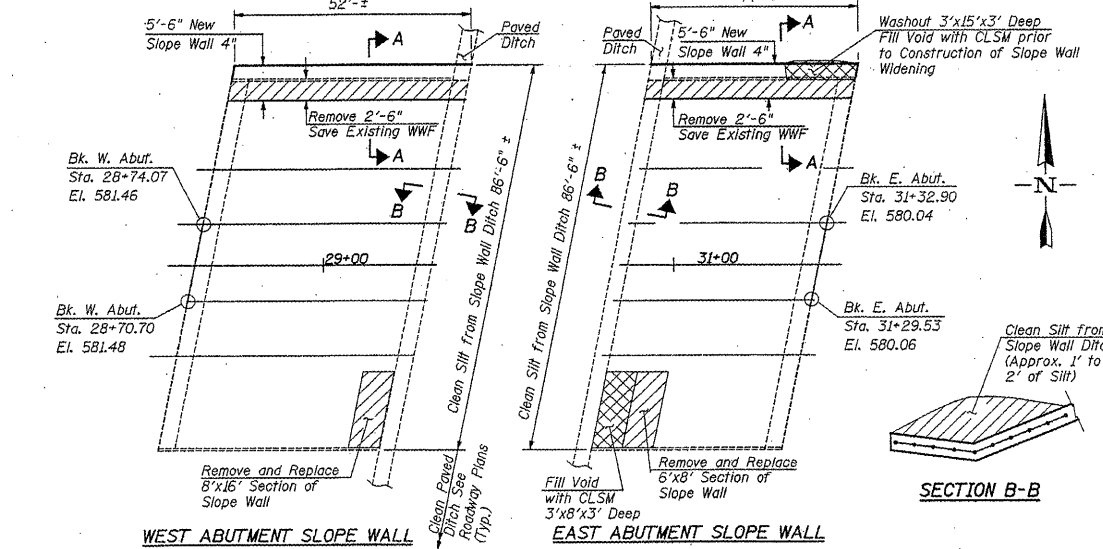
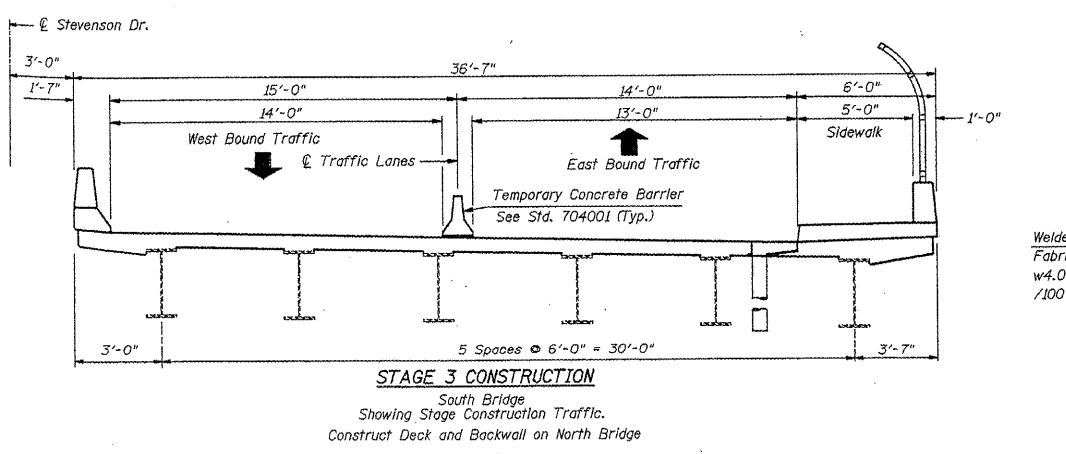
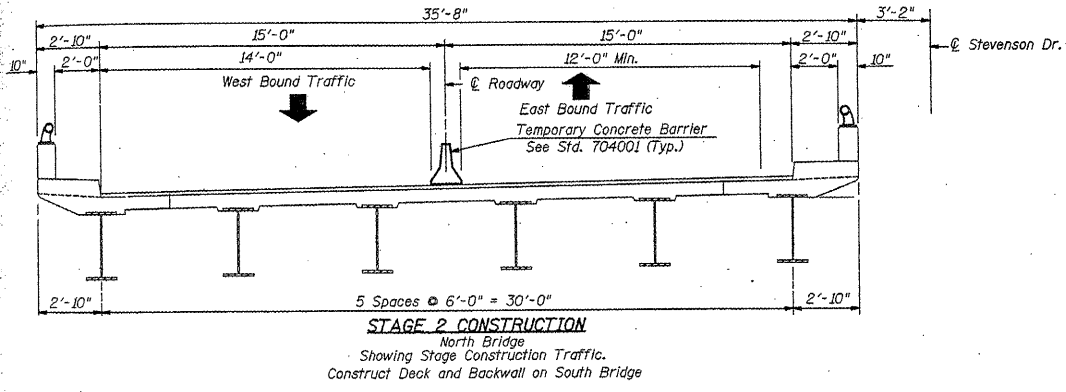
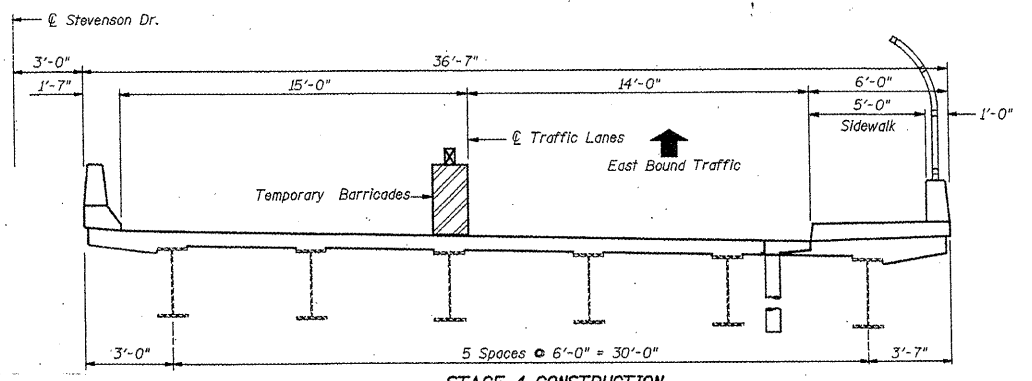
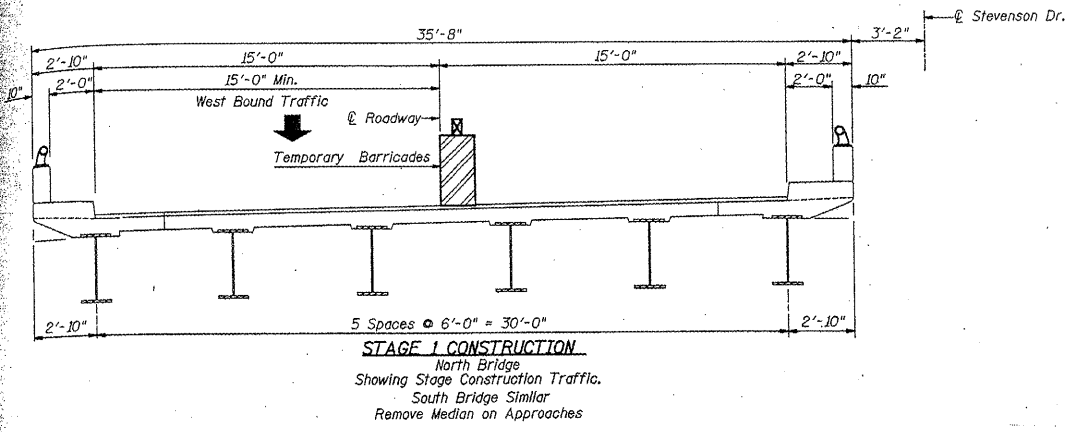
QUANTITIES
FAI 55 (I-55)
D-6 REHAB BDGE PAINTING 2010
SANGAMON COUNTY



FOR INFORMATION ONLY

EXISTING PLANS SN084-0082,0083
FAI 55 (I-55)
D-6 REHAB BDGE PAINTING 2010
SANGAMON COUNTY

ROUTE NO.	SECTION	COUNTY	TYPICAL SHEETS	SHEET NO.
7998	(**)	SANGAMON	264	214
ILLINOIS PROJECT				
(**) D-6 RESURF 2004, SHEET 3 OF 30 (84-3HB-2)BR				



NOTE:
Slope wall repair quantities are based on visual inspections performed in Nov. 2003 and are for estimating purposes only. Final location and quantities will be determined by the Engineer in the field.

ITEM	UNIT	QUANTITY
Slope Wall Repair	Sq. Yd.	20
Slope Wall 4 Inch	Sq. Yd.	59
Clean Slope Wall Ditch	Foot	173
Controlled Low-Strength Material	Cu. Yd.	8

STAGE CONSTRUCTION DETAILS
F.A.U. RTE. 7998 STEVENSON DR.
OVER F.A.I. RTE. 55
SECTION 84-3HB-2
SANGAMON COUNTY
S.N. 084-0082 & S.N. 084-0083
STA. 30+11.66

ie INTERNATIONAL ENGINEERING CONSULTANTS, INC.
6420 SOUTH SIXTH STREET
SPRINGFIELD, ILLINOIS 62797
TEL. (217) 628-8027
FAX (217) 628-4843
IESPRINGFIELD@IE-CONSULTANTS.COM
WWW.IE-CONSULTANTS.COM

DRAWN BY: TRF
CHECKED BY: DRB
DATE: 3-29-04
PROJECT: S03046

FOR INFORMATION ONLY

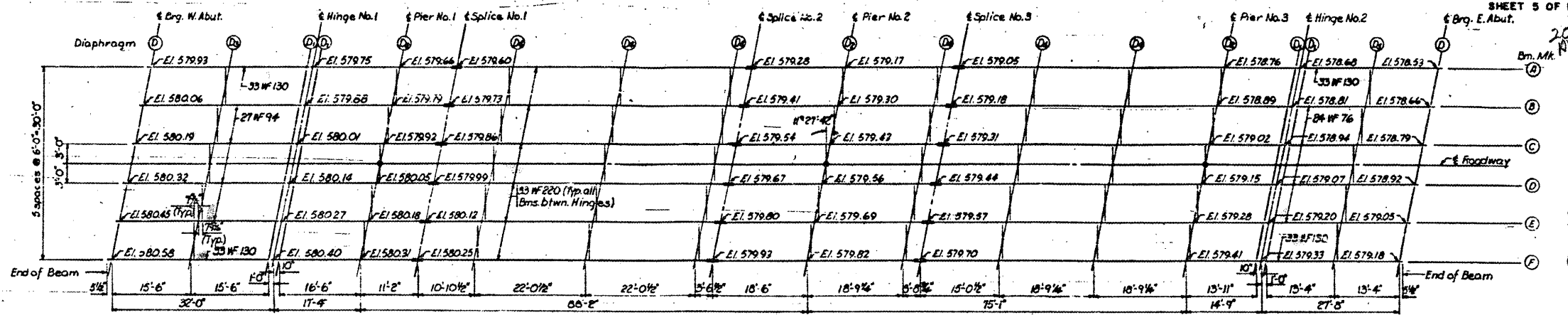
EXISTING PLANS SN084-0082,0083
FAI 55 (I-55)
D-6 REHAB BDGE PAINTING 2010
SANGAMON COUNTY

STATE OF ILLINOIS
DEPARTMENT OF PUBLIC WORKS & BUILDINGS
DIVISION OF HIGHWAYS

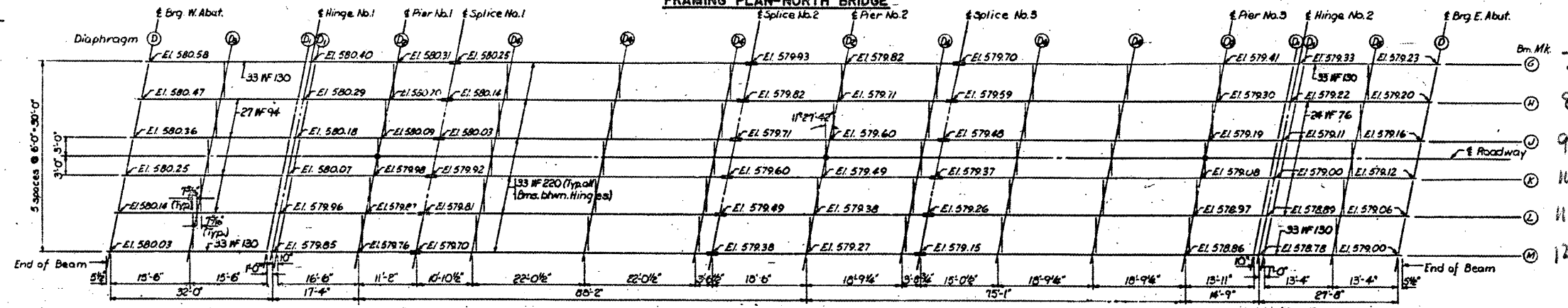
NO.	REV.	DATE	BY	CHKD.
1	01	05/20/08	Sangamon	2004
2	02	08/01/08	12	20

SHEET 5 OF 13

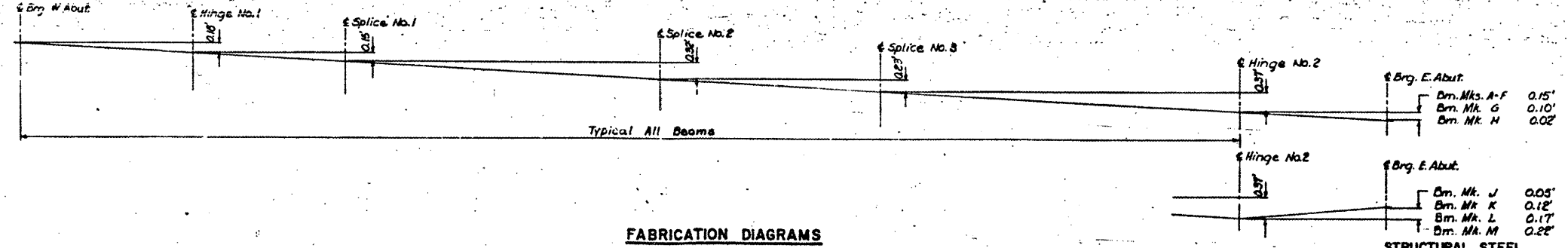
2004
Plans



FRAMING PLAN-NORTH BRIDGE



FRAMING PLAN-SOUTH BRIDGE



FABRICATION DIAGRAMS

STRUCTURAL STEEL
E. LAKE SHORE DRIVE OVER F.A.I. RT. 55

F.A.I. ROUTE 55 SECTION 84-3HB-2-F
SANGAMON COUNTY
STATION 172+01.81

DESIGNED	JFC	EXAMINED	
CHECKED	JLR	PASSED	
DRAWN	JFC	APPROVED	
CHECKED	V.F.S.		

Note: All elevations shown are given at the top of the top flange of the beams & Brg. or Splice and are to be used for fabrication of structural steel. Deflection is not included. Work this sheet with Sheet 6 of 13.

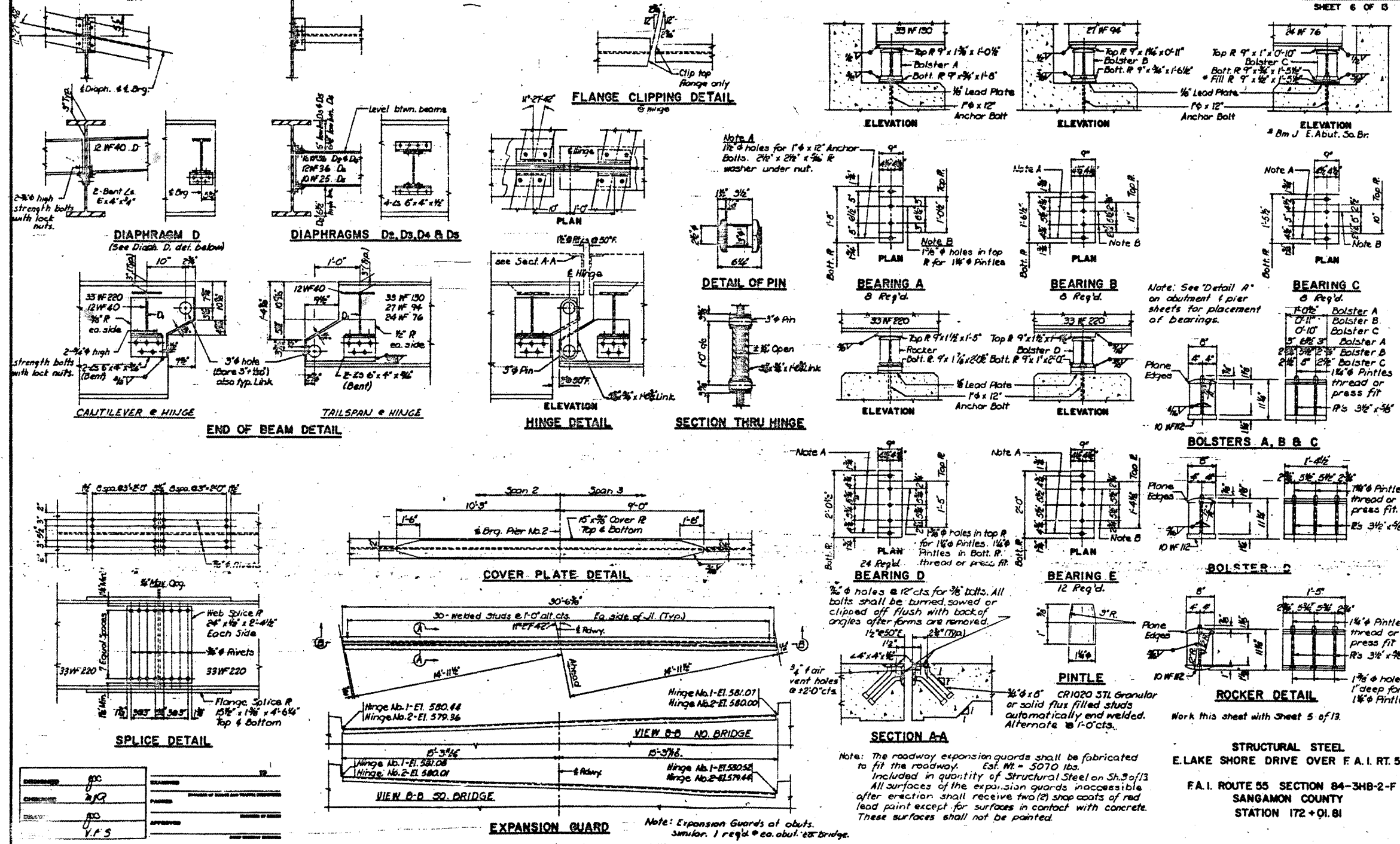
FOR INFORMATION ONLY

EXISTING PLANS SN084-0082,0083
FAI 55 (I-55)
D-6 REHAB BDGE PAINTING 2010
SANGAMON COUNTY

STATE OF ILLINOIS
DEPARTMENT OF PUBLIC WORKS & BUILDINGS
DIVISION OF HIGHWAYS

NO.	REV.	DATE	BY	CHKD.
1				
2				
3				

SHEET 6 OF 13



Note: The roadway expansion guards shall be fabricated to fit the roadway. Est. Wt. = 5070 lbs.
Included in quantity of Structural Steel on Sh. 3 of 13
All surfaces of the expansion guards, inaccessible after erection shall receive two (2) shop coats of red lead paint except for surfaces in contact with concrete. These surfaces shall not be painted.

Work this sheet with Sheet 5 of 13.

STRUCTURAL STEEL
ELAKE SHORE DRIVE OVER F.A.I. RT. 55
F.A.I. ROUTE 55 SECTION 84-3HB-2-F
SANGAMON COUNTY
STATION 172+01.81

EXISTING PLANS SN084-0082,0083
FAI 55 (I-55)
D-6 REHAB BDGE PAINTING 2010
SANGAMON COUNTY

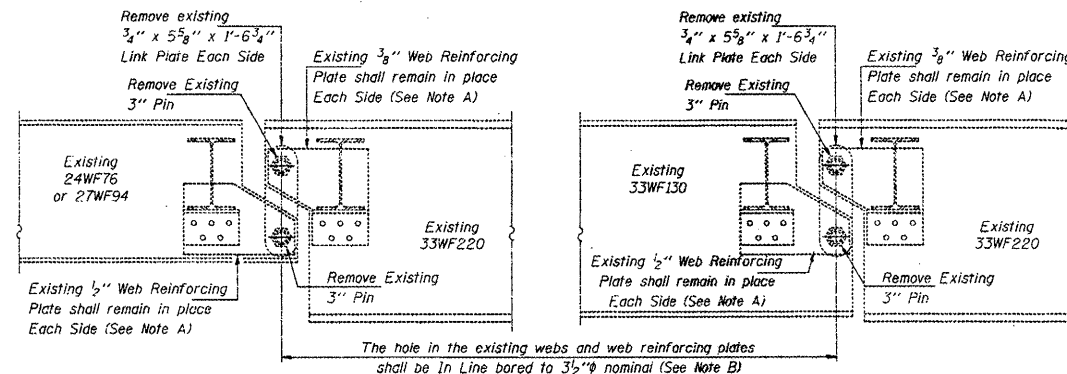
FOR INFORMATION ONLY

084-0083, 0082

STATE OF ILLINOIS
DEPARTMENT OF TRANSPORTATION

* FAI 55 & FAI 55 (FRANTAGE RD)
** (84-3HB-2)I-1 & (10x-3VB)I

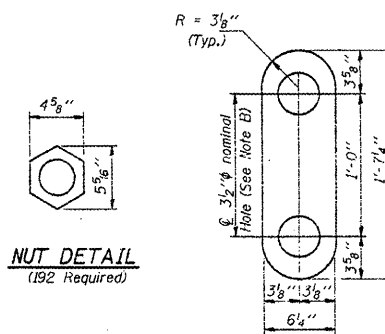
NO. 1	SECTION	DATE	BY	CHKD.	APP'D.	SHEET NO. 1
1	1		SANGAMON	II	3	4 SHEETS
PREPARED BY	DESIGNED BY	CHECKED BY	DATE	BY	APP'D.	



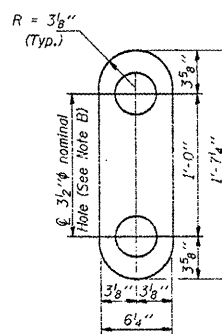
ELEVATION AT EXISTING PIN ASSEMBLY
FOR INTERIOR BEAMS

ELEVATION AT EXISTING PIN ASSEMBLY
FOR EXTERIOR BEAMS

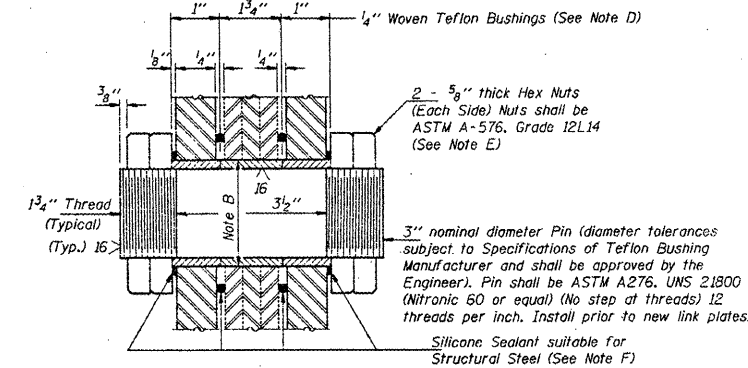
Any Pins that can be easily removed without damage to the pin shall be salvaged and the Bridge Engineer shall be contacted for disposition. Cost of salvage is included in "Pin and Link Plate Replacement".



NUT DETAIL
(192 Required)



LINK PLATE DETAIL
(48 Required)



SECTION THRU PIN
(48 Required)

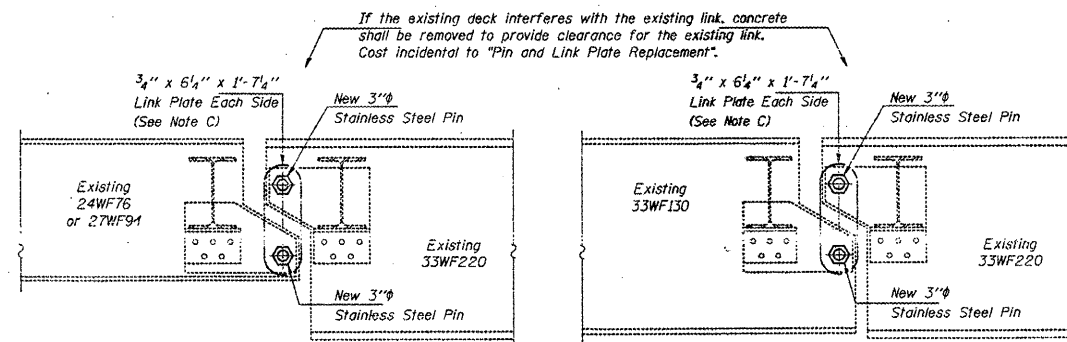
GENERAL NOTES

- All new structural steel shall conform to AASHTO Classification M-270 Gr. 36, unless otherwise noted.
- The Contractor shall provide support and/or shoring systems for the beam in the area of existing pin and link plate replacement. See Special Provision "Temporary Support System."
- The inorganic zinc rich primer/acrylic/acrylic paint system shall be used for shop and field painting of new structural steel except where otherwise noted. The color of the acrylic finish coat shall be Interstate Green, Munsell No. 7.5G 4/8. See Special Provisions "Cleaning and Painting New Metal Structures". Cost shall be included in the cost of "Pin and Link Plate Replacement".
- Existing Structural steel shall be cleaned and painted as required by the Special Provision "Cleaning and Painting Adjacent Areas of Existing Steel Structures". Cost shall be included in the cost of "Pin and Link Plate Replacement".
- All existing steel surfaces behind link plates shall be cleaned and primed before installation of new link plates. Cost shall be included in the cost of "Pin and Link Plate Replacement".
- Plan dimensions and details relative to existing structure have been taken from existing plans and are subject to nominal construction variations. It shall be the Contractor's responsibility to verify such dimensions and details in the field, except the pin diameters, and make necessary approved adjustments prior to construction or ordering of materials. Such variations shall not be cause for additional compensation for a change in the scope of the work, however, the Contractor will be paid for the quantity actually furnished at the unit price bid for the work.
- The Pins and Link Plates shall conform to the minimum Charpy V-Notch Toughness of 25 ft.-lbs. at 40° F.
- The pins, link plates, bushings, nuts and silicone sealant are the items included in "Pin and Link Plate Replacement".

BILL OF MATERIAL

ITEM	UNIT	QUANTITY
Temporary Support System	Each	24
Pin and Link Plate Replacement	Each	24

PIN AND LINK PLATE REPLACEMENT
F.A.I. RT. 55 SEC. 84-3HB-2I
SANGAMON COUNTY
STA. 172+01.81
STR. No. 084-0082 AND 084-0083



ELEVATION AT NEW PIN ASSEMBLY
FOR INTERIOR BEAMS

ELEVATION AT NEW PIN ASSEMBLY
FOR EXTERIOR BEAMS

MAXIMUM REACTIONS AT PIN

RP	(K)	15.5
RL	(K)	27.3
Imo.	(K)	8.3
R Total	(K)	51.6

- Note A: Existing welds shall be inspected for cracks using liquid dye penetrant or magnetic particle testing. Any cracks that are found shall be identified and reported to the Bureau of Bridges and Structures for further disposition. Clean and paint before installing new link plates.
- Note B: Bare diameter for bushing in link plate, existing webs and web reinforcement plates shall correspond to bushing manufacturer's allowable tolerances for proper functioning. Hole diameter may be adjusted to allow use of stock bushings.
- Note C: Inside face of new link plates shall receive first field coat in shop. The primer shall pass the M.E.K. Rub Test before the first field coat is applied.
- Note D: Actual bushing thickness per manufacturer's specifications, 1/4" is approximate. Bushings shall be a self lubricating filament wound epoxy matrix backed Duralon Bearing, metal backed Fiber Glide Bearing or equivalent. No primer or grease shall be allowed on bushings. Bushings shall be suitable for dynamic loads of 20,000 psi.
- Note E: Tighten inside nuts to bring all bushings into firm contact, then back off 1/4 turn and tighten outer nuts.
- Note F: Apply 3/8" bead to face of the web reinforcing plates approximately 1/2" from bushing immediately before installing new link plates. Place sealant around nuts after installation. Sealant shall be suitable for prolonged exterior exposure without losing flexibility or adhesion to painted steel surfaces. Proposed products shall be subject to Department's acceptance based on documented testing or other evidence.

DESIGNED	<i>Handwritten Signature</i>	APRIL 17, 1997
CHECKED	<i>Handwritten Signature</i>	<i>Handwritten Signature</i>
DRAWN	<i>Handwritten Signature</i>	PASSED
CHECKED	<i>Handwritten Signature</i>	<i>Handwritten Signature</i>

FOR INFORMATION ONLY

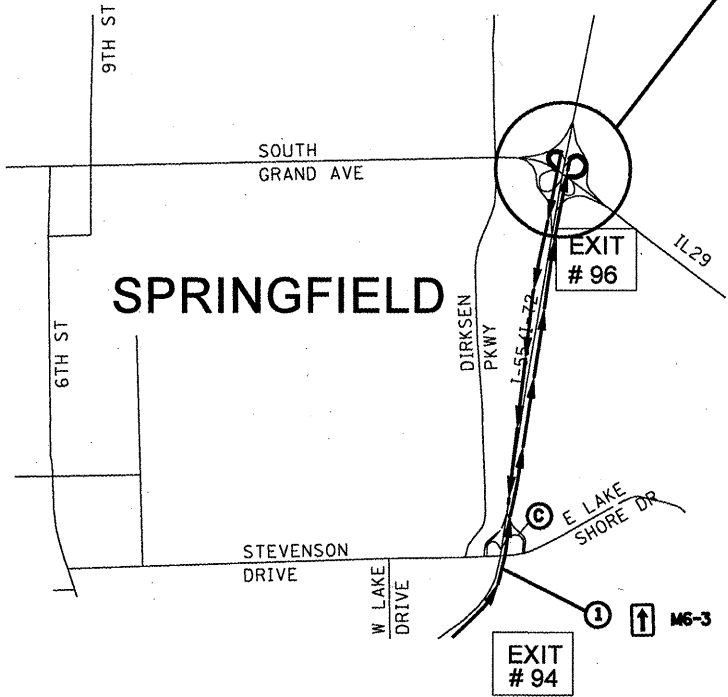
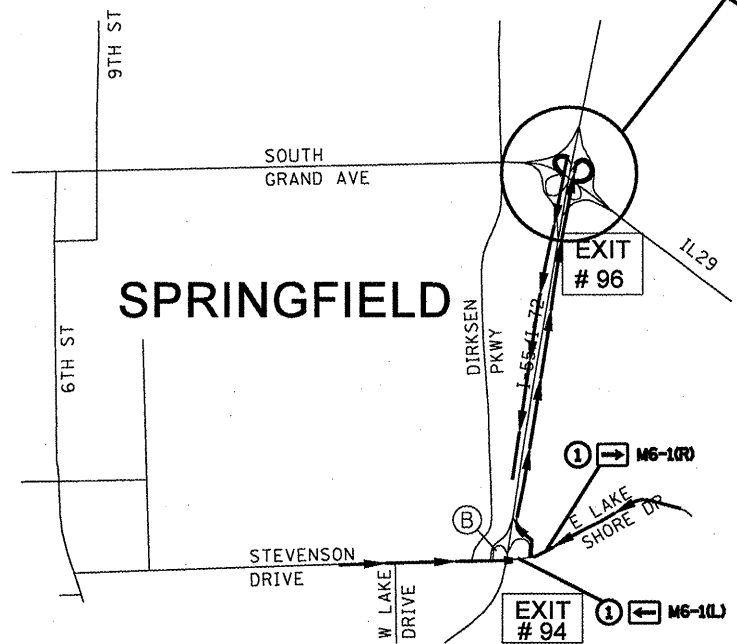
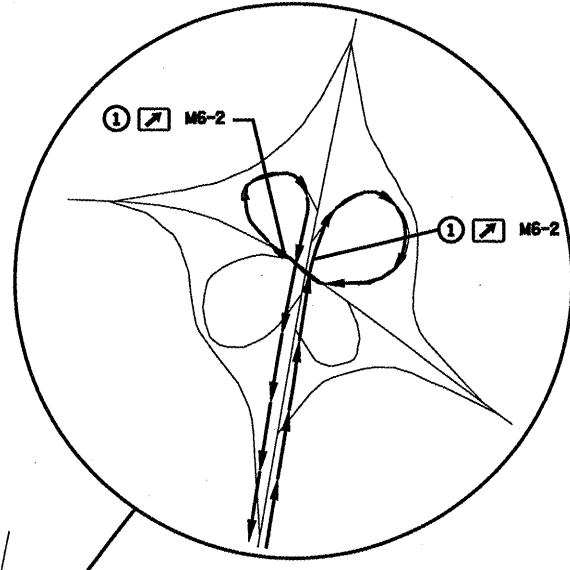
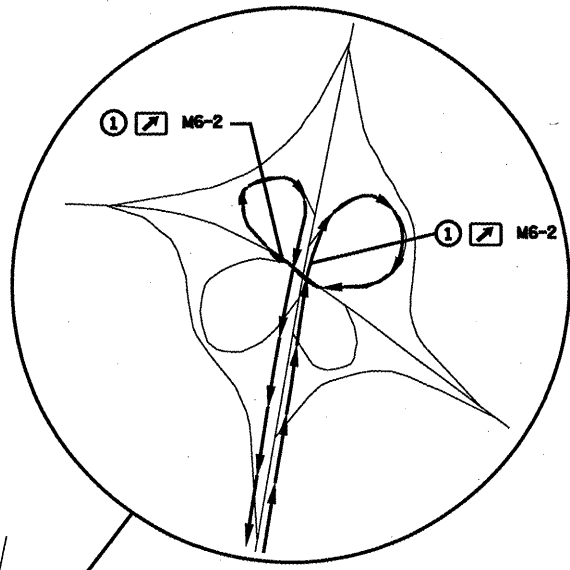
EXISTING PLANS SN084-0082,0083
FAI 55 (I-55)
D-6 REHAB BDGE PAINTING 2010
SANGAMON COUNTY

F.A.I. RTE.	SECTION	COUNTY	TOTAL SHEETS	SHEET NO.
55		SANGAMON	10	9

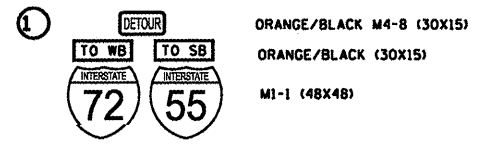
D-6 REHAB BDGE PAINTING 2010

STEVENSON DR / EAST LAKE SHORE DR TO SB I-55

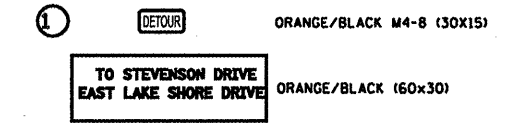
NB I-55 TO STEVENSON DR / EAST LAKE SHORE DR



USE FOR CLOSING STEVENSON INTERCHANGE RAMP B



USE FOR CLOSING STEVENSON INTERCHANGE RAMP C



REVISIONS	
NAME	DATE

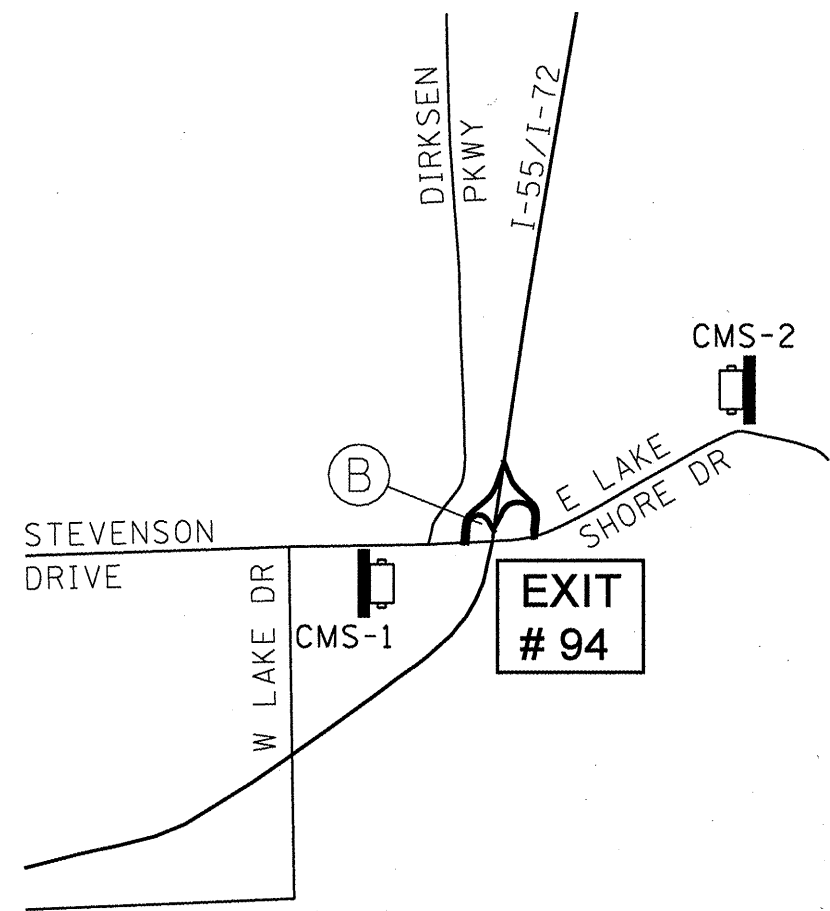
ILLINOIS DEPARTMENT OF TRANSPORTATION
DETOUR SIGNING PLAN
 FA155(I-55),
 SECTION D-6 REHAB BDGE PAINTING 2010
 SANGAMON COUNTY
 SCALE: DRAWN BY
 DATE CHECKED BY

CONTRACT NO. 72659

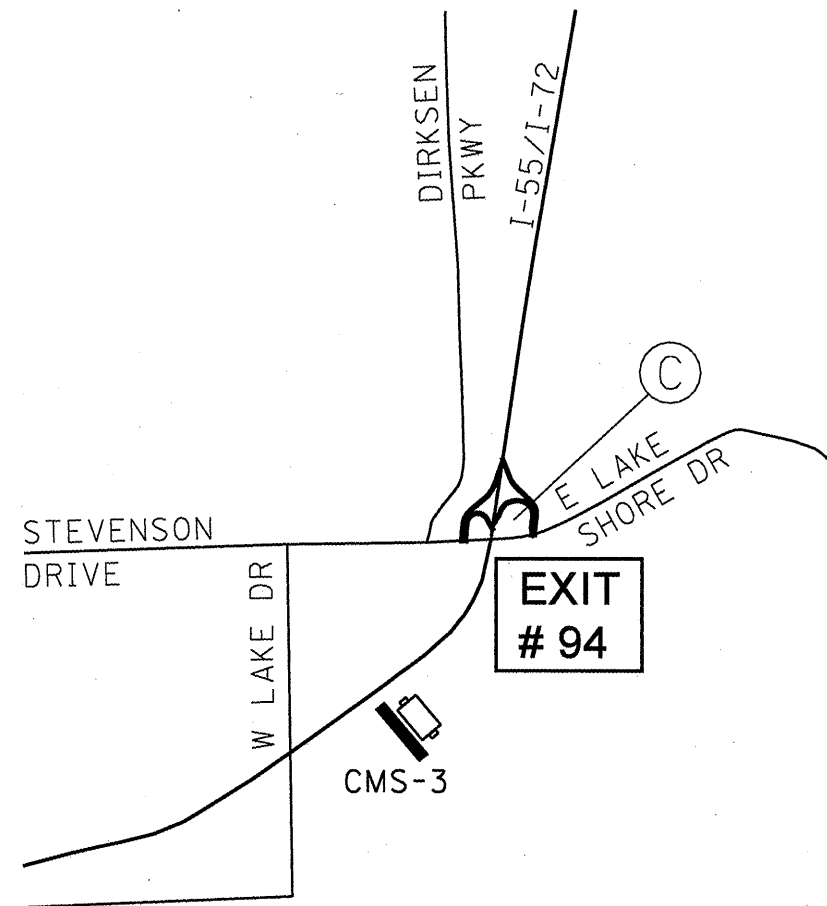
F.A.I. RTE.	SECTION	COUNTY	TOTAL SHEETS	SHEET NO.
*	**	SANGAMON	10	10
STA.		TO STA.		
FED. ROAD DIST. NO.		ILLINOIS FED. AID PROJECT		
* FA155(I-55)				
** D-6 REHAB BIDGE PAINTING 2010				



MESSAGE BOARD PLACEMENT
WHEN CLOSING RAMP B



MESSAGE BOARD PLACEMENT
WHEN CLOSING RAMP C



NOTE:
ALL MESSAGE BOARDS SHALL BY PROTECTED
BY THREE, TYPE III BARRICADES, DRUMS, OR
VERTICAL BARRICADES AT 50' CENTERS.

REVISIONS	
NAME	DATE

ILLINOIS DEPARTMENT OF TRANSPORTATION
MESSAGE BOARD
PLACEMENT SHEET
FA155(I-55)
SECTION D-6 REHAB BIDGE PAINTING 2010
SANGAMON COUNTY

SCALE: _____
DATE _____

DRAWN BY _____
CHECKED BY _____

PLOT DATE: _____
FILE NAME: _____
PLOT SCALE: _____
USER NAME: _____