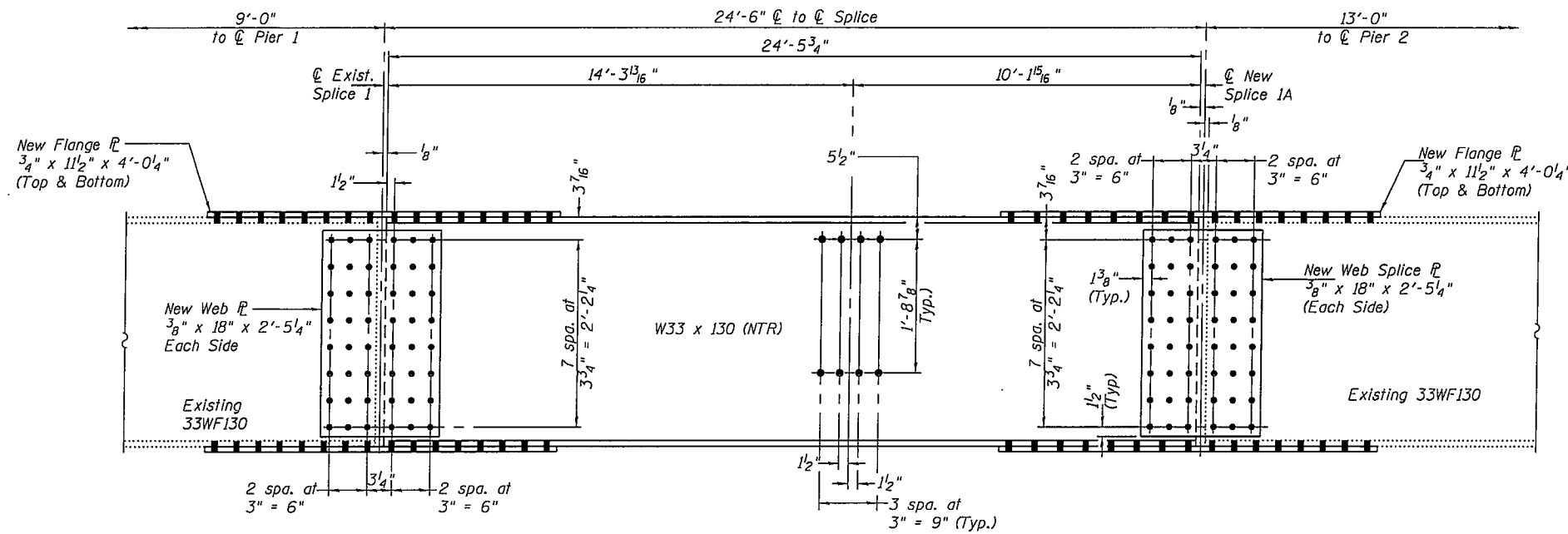
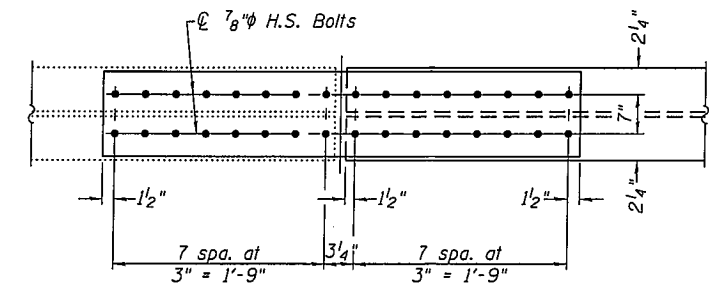


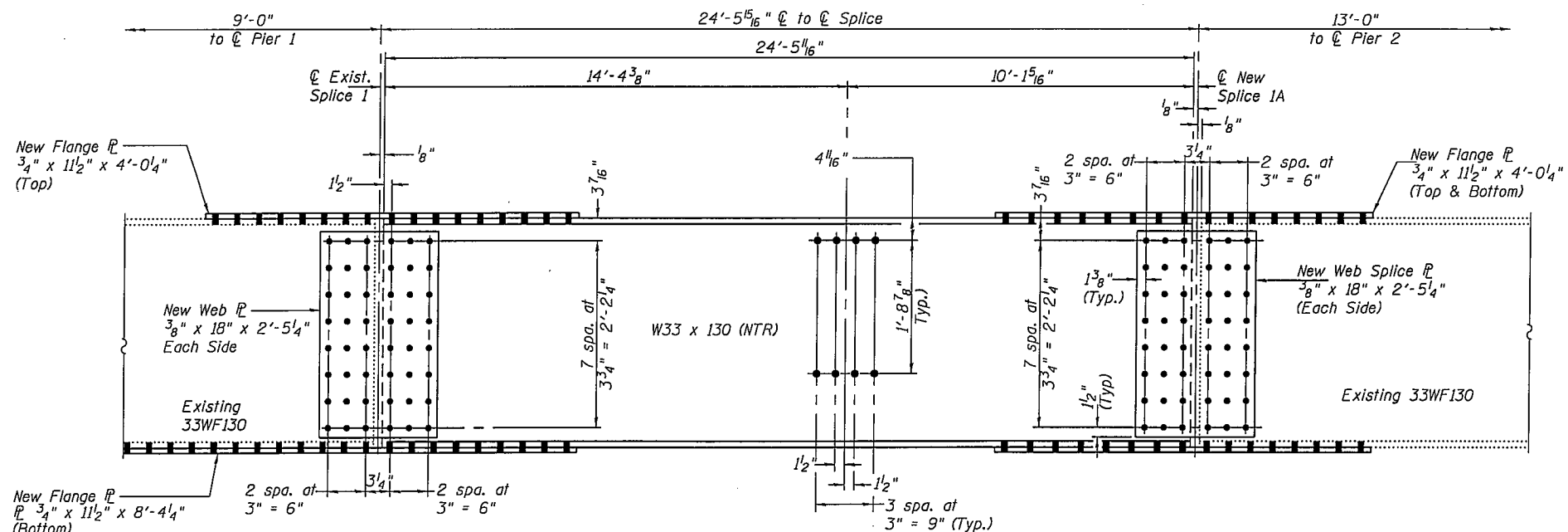
STATE OF ILLINOIS
DEPARTMENT OF TRANSPORTATION



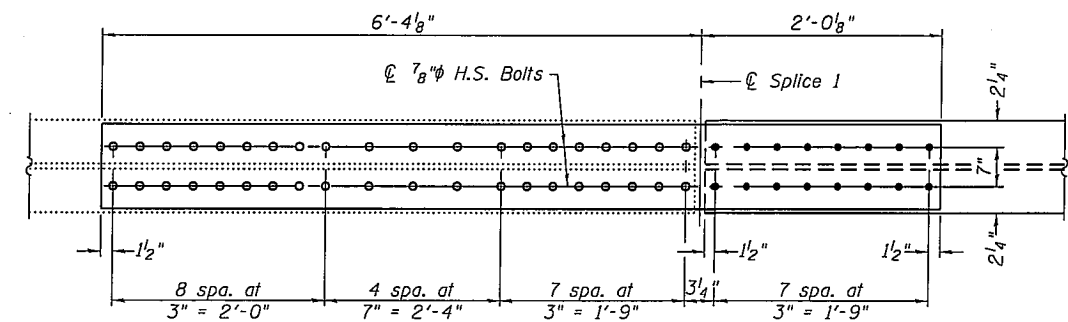
ELEVATION BEAM 12 (SPAN 2)
(Looking North)
(SN 084-0077)



TYPICAL FLANGE SPLICE DETAIL



ELEVATION BEAM 15 (SPAN 2)
(Looking North)
(SN 084-0077)



BOTTOM SPLICE PLATE AT SPLICE 1 BEAM 15

DESIGNED	A.J.B.
CHECKED	A.T.H.
DRAWN	Drew Christopher
CHECKED	A.J.B. A.T.H.

EXAMINED	SEPTEMBER 16, 2009
PASSED	Carl Perry ENGINEER OF STRUCTURAL SERVICES
	Ralph E. Anderson ENGINEER OF BRIDGES AND STRUCTURES

Notes:
Use existing clip angles as a template to field drill holes in new beam at existing diaphragm location.

BEAM REPLACEMENT DETAILS
SN 084-0076 & 0077

SHEET NO. 5 7 SHEETS	F.A. RTE.	SECTION	COUNTY	TOTAL SHEETS	SHEET NO.
	72	(84-3HB-4)I-1	Sangamon	17	15
FED. ROAD DIST. NO.		ILLINOIS FED. AID PROJECT			
		CONTRACT NO. 72C69			