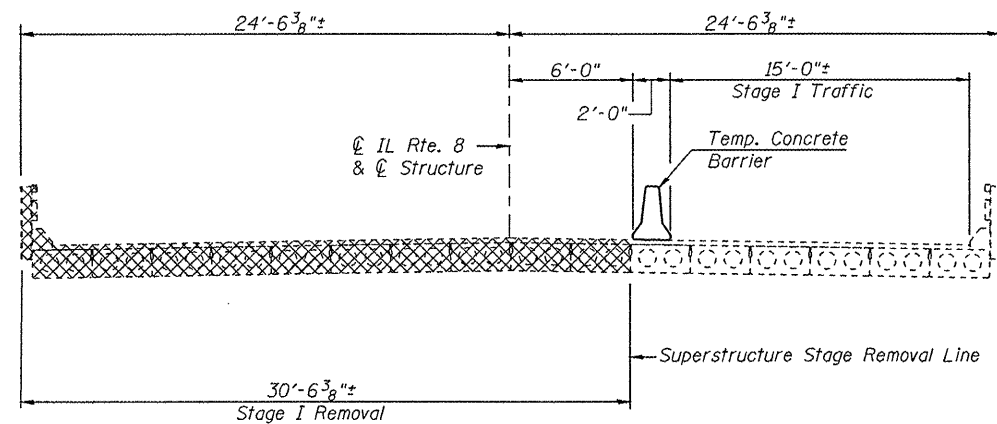
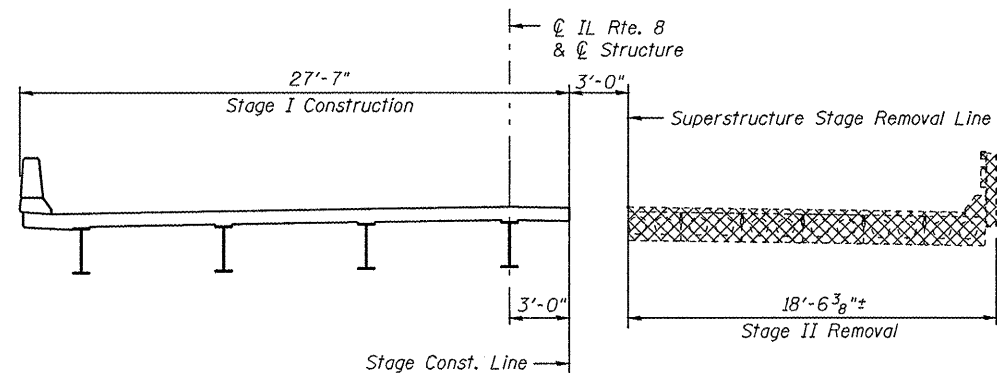


STATE OF ILLINOIS DEPARTMENT OF TRANSPORTATION

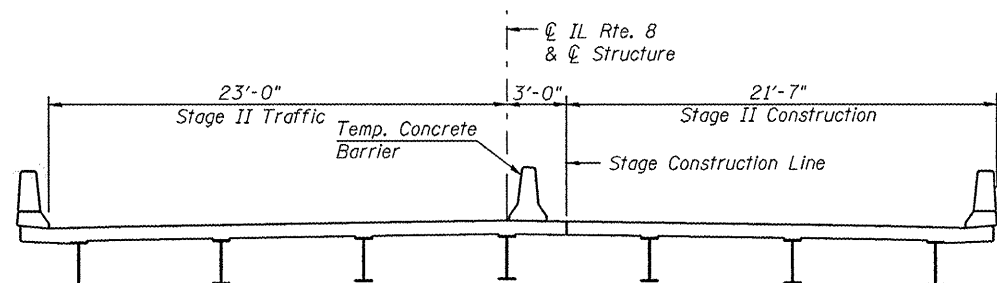
- Notes:
1. Cross Hatched areas indicate removal of existing structure.
 2. Location of Stage Construction lines is also applicable to substructure.
 3. See roadway plans for quantity of Temporary Concrete Barrier.
 4. See sheet 4 of 22 for details of Temporary Concrete Barrier.
 5. Removal of existing bridge railing and bituminous wearing surface is included with Removal of Existing Structures.
 6. A cantilevered sheet piling design does not appear feasible and additional members or other retention systems may be necessary. The Contractor shall submit a temporary soil retention system design including plan details and calculations for review and acceptance by the Engineer.
 7. All cross sections are Looking South.



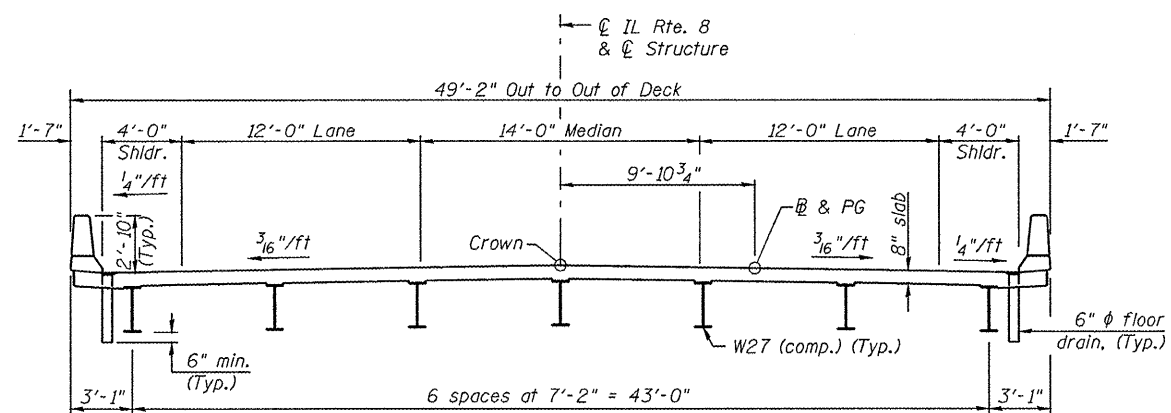
STAGE I REMOVAL & TRAFFIC



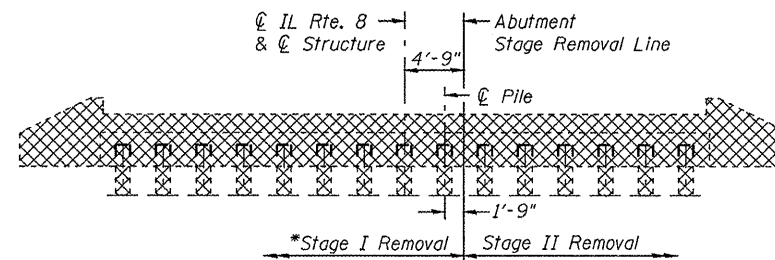
STAGE I CONSTRUCTION & STAGE II REMOVAL



STAGE II CONSTRUCTION & TRAFFIC

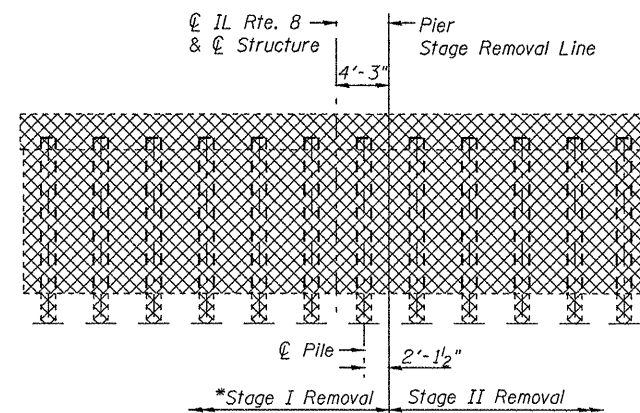


PROPOSED CROSS SECTION



EXISTING ABUTMENT

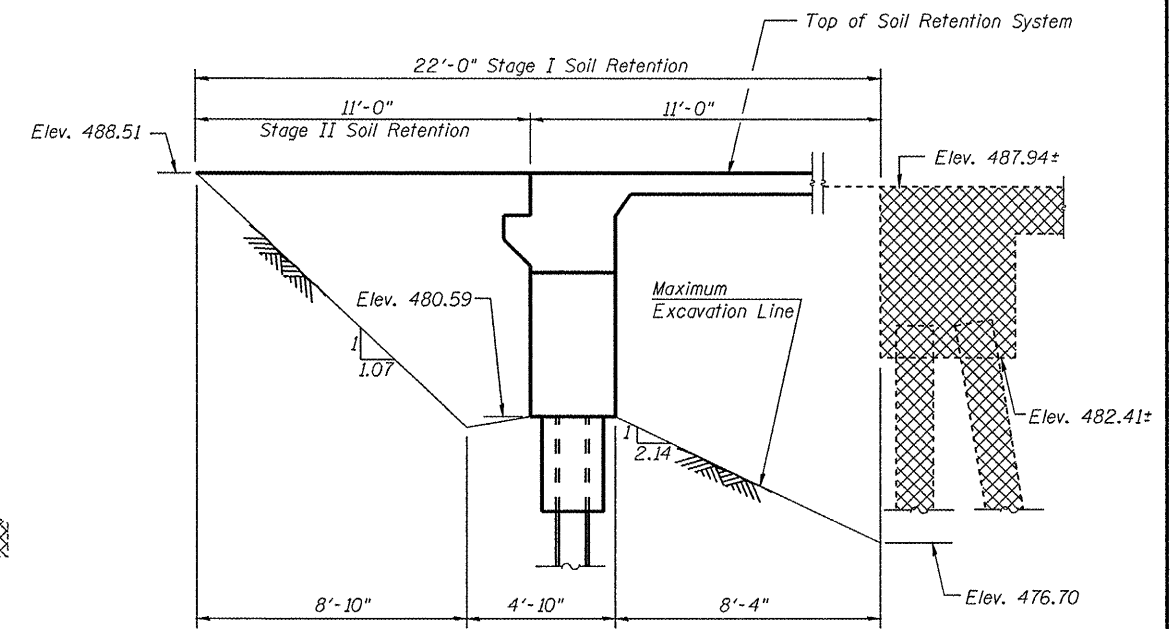
(South Abutment Shown, North Abutment Mirrored about C Structure)



EXISTING PIERS 1 & 2

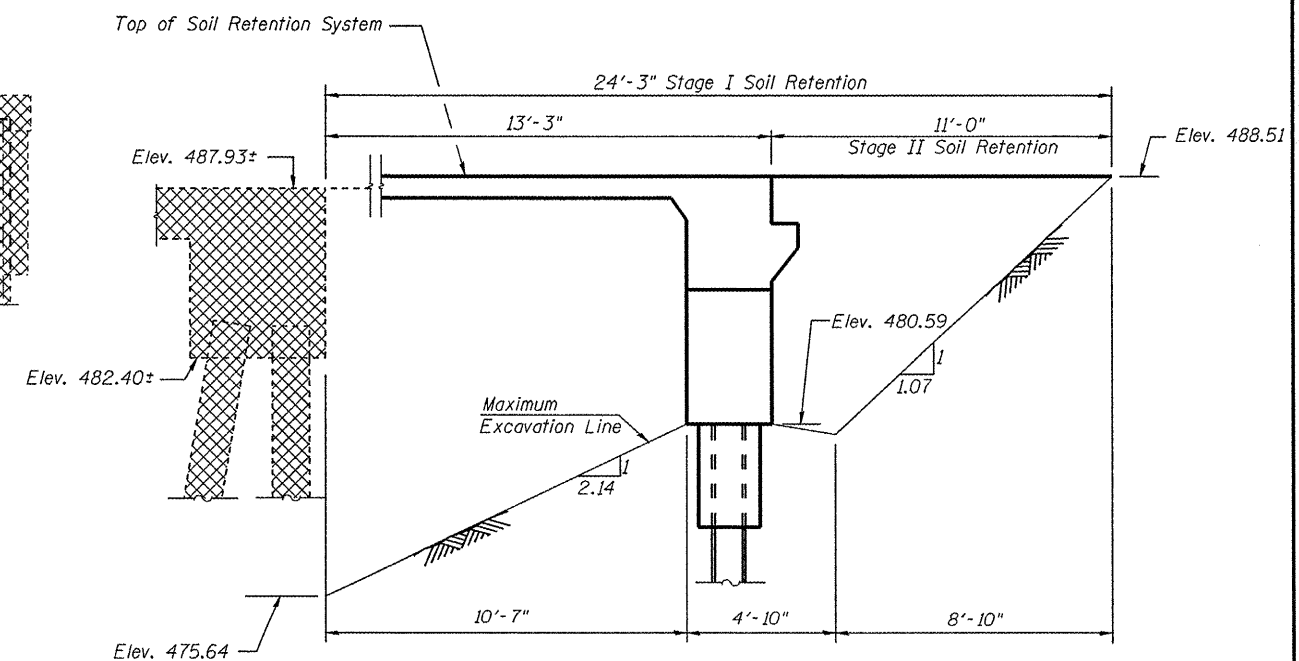
(Looking South)

- * Contractor shall take precaution to not expose piles adjacent to the stage removal line under the portion of pier to remain during stage I removal procedure.



TEMPORARY SOIL RETENTION SYSTEM AT NORTH ABUTMENT

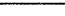
(Dimensions taken along Stage Construction Line)



TEMPORARY SOIL RETENTION SYSTEM AT SOUTH ABUTMENT

(Dimensions taken along Stage Construction Line)

STAGE CONSTRUCTION DETAILS STRUCTURE NO. 072-0227

 <div>LIN ENGINEERING, LTD. Consulting Engineers Chatham, Illinois</div>	SHEET NO. 3 22 SHEETS	F.A.U RTE.	SECTION	COUNTY	TOTAL SHEETS	SHEET NO.	
		6658	(ZC-15D-BR)BR	PEORIA	49	16	
					CONTRACT NO. 68478		
		FED. ROAD DIST. NO.					ILLINOIS
Designed By: TBP Date: 01/09/71	Checked By: WHH Date: 02/08/71	Drawn By: TBP					