

STATE OF ILLINOIS
DEPARTMENT OF TRANSPORTATION

GENERAL NOTES

Fasteners shall be AASHTO M164 Type 1, mechanically galvanized bolts.
Bolts $\frac{7}{8}$ in. ϕ , holes $\frac{15}{16}$ in. ϕ , unless otherwise noted.

Calculated weight of Structural Steel = 84,430 lbs (AASHTO M270, Grade 50)
8,300 lbs (AASHTO M270, Grade 36)

No field welding is permitted except as specified in the contract documents.

Reinforcement bars shall conform to the requirements of ASTM A 706
Gr 60. See Special Provisions.

Reinforcement bars designated (E) shall be epoxy coated.

Bearing seat surfaces shall be constructed or adjusted to their designated
elevations within a tolerance of $\frac{1}{8}$ inch (0.01 ft.). Adjustment shall be made
either by grinding the surface or by shimming the bearings.

The Inorganic Zinc Rich Primer / Acrylic / Acrylic Paint System shall be
used for shop and field painting of new structural steel except where otherwise
noted. The color of the final finish coat for all interior steel surfaces shall be
gray, Munsell No. 5B 7/1. The color of the final finish coat for the exterior
and bottom flange of the fascia beams shall be Reddish Brown, Munsell No.
2.5YR 3/4. See Special Provision for "Cleaning and Painting New Metal Structures".

Layout of slope protection system may be varied in the field to suit ground
conditions as directed by the Engineer.

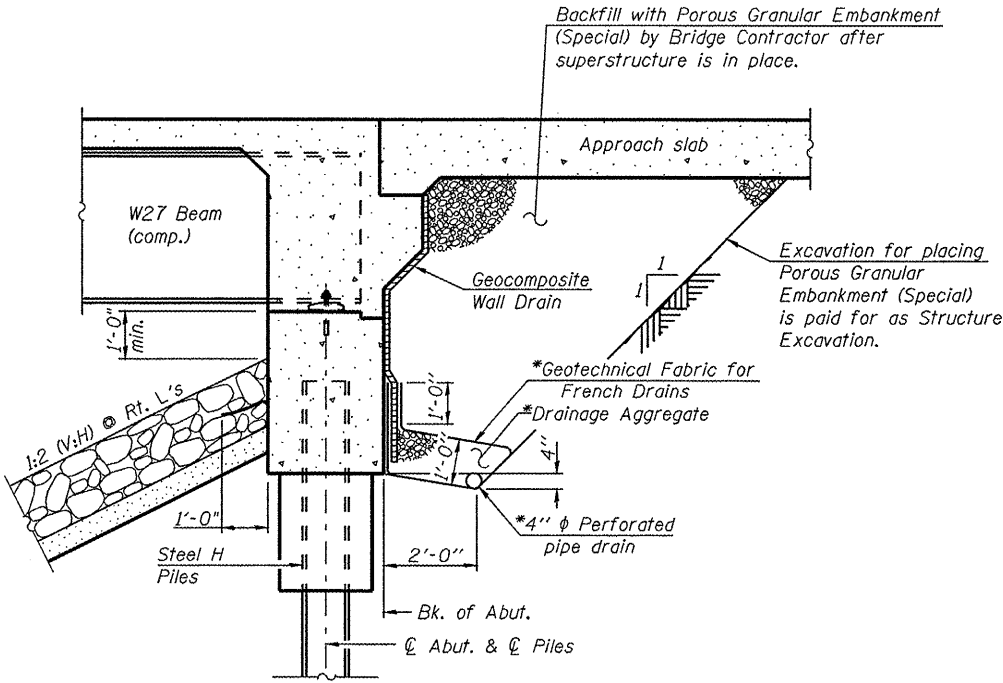
The Contractor is advised that the existing PPC Deck beams are in a deteriorated
condition with reduced load carrying capacity. It is the Contractor's responsibility
to account for the condition of the beams when developing construction procedures
for removal and replacement of the superstructure.

If the Contractor's procedures for existing deck beam removal involves placement
of heavy equipment on the existing deck beams, a detailed procedure shall be
submitted to the Engineer for approval. The procedure shall include calculations,
sealed by an Illinois Licensed Structural Engineer, verifying the structural adequacy
of the beams for the proposed loads. Cost included with Removal of Existing Structures.

Slip Forming of the Parapet is not allowed.

The SSPC QP-1 contractor certification will be required for this contract.

All structural bolting shall be done utilizing Load Indicating Washers
according to Article 505.04(f)(2)(a) of the Standard Specifications
unless otherwise noted. See Special Provisions.



SECTION THRU INTEGRAL ABUTMENT
(Horiz. dim. @ Rt. L's)

*Included in the cost of Pipe Underdrains for Structures.

Note:
All drainage system components shall extend to 2'-0" from
the end of each wingwall except an outlet pipe shall extend
until intersecting with the side slopes. The pipes shall drain
into concrete headwalls. (See Article 601.05 of the Standard
Specifications and Highway Standard 60110.1).


TOTAL BILL OF MATERIAL

ITEM	UNIT	SUPER	SUB	TOTAL
Porous Granular Embankment, Special	Cu. Yd.	-	173	173
Stone Dumped Riprap, Class A5	Sq. Yd.	-	1747	1747
Filter Fabric	Sq. Yd.	-	1747	1747
Removal of Existing Structures	Each	1	-	1
Structure Excavation	Cu. Yd.	-	306	306
Floor Drains	Each	14	-	14
Concrete Structures	Cu. Yd.	-	162.1	162.1
Concrete Superstructure	Cu. Yd.	305.8	-	305.8
Bridge Deck Grooving	Sq. Yd.	971	-	971
Concrete Encasement	Cu. Yd.	-	10.6	10.6
Protective Coat	Sq. Yd.	1162	-	1162
Furnishing and Erecting Structural Steel	Lump Sum	1	-	1
Stud Shear Connectors	Each	3129	-	3129
Reinforcement Bars, Epoxy Coated	Pound	96730	16960	113690
Bar Splicers	Each	726	154	880
Furnishing Steel Piles HP 12x53	Foot	-	1844	1844
Driving Piles	Foot	-	1844	1844
Name Plates	Each	1	-	1
Anchor Bolts, 1"	Each	-	56	56
Geocomposite Wall Drain	Sq. Yd.	-	109	109
Pipe Underdrains for Structures, 4"	Foot	-	163	163
Mechanical Splice	Each	-	36	36
Temporary Soil Retention System	Sq. Ft.	-	353	353
Underwater Structure Excavation Protection Location 1	Each	-	1	1
Underwater Structure Excavation Protection Location 2	Each	-	1	1
Asbestos Bearing Pad Removal	Each	-	44	44

STATION 381+08.75
BUILT 20 BY
STATE OF ILLINOIS
F.A.U. RT. 6658 SEC. (ZC-15D-BR)BR
LOADING HL-93
STRUCTURE NO. 072-0227

NAME PLATE
See Std. 515001

GENERAL NOTES AND DETAILS
STRUCTURE NO. 072-0227

 LIN ENGINEERING, LTD. Consulting Engineers Chatham, Illinois	SHEET NO. 2	F.A.U. RTE.	SECTION	COUNTY	TOTAL SHEETS	SHEET NO.
	22 SHEETS	6658	(ZC-15D-BR)BR	PEORIA	49	15
					CONTRACT NO. 68478	
Designed By: TBP Date: 03/2009		Checked By: KKH File: 072-0227.dgn		FED. ROAD DIST. NO. _ ILLINOIS FED. AID PROJECT		