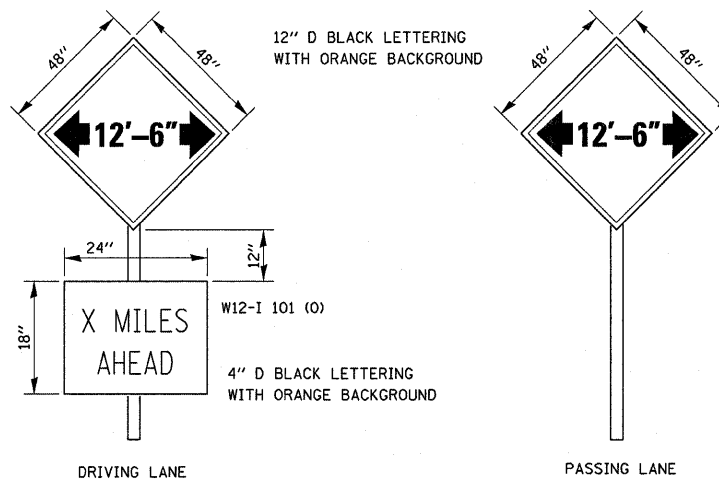


DELINEATION FOR MAINTENANCE CROSSOVER (TYPICAL FOR BOTH DIRECTIONS)



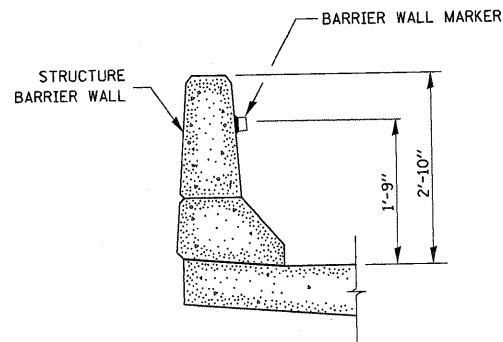
TO BE POST MOUNTED, FOR STAGE 1 ONLY. 10 NEEDED-6 NEEDED FOR WB TRAFFIC (TWO 1/2 MILE EAST OF I-39, TWO 1/2 MILE EAST OF IL 251, AND TWO 1/2 MILE EAST OF PLANK ROAD). AND 4 FOR EB TRAFFIC (TWO 1/2 MILE WEST OF IL 89, AND TWO 1/2 MILE WEST OF I-180)

THE ENGINEER WILL NOTIFY DISTRICT 3 BUREAU OF OPERATIONS 14 CALENDAR DAYS PRIOR TO INSTALLING ANY TRAFFIC CONTROL DEVICES THAT WILL RESTRICT THE PAVEMENT WIDTH.

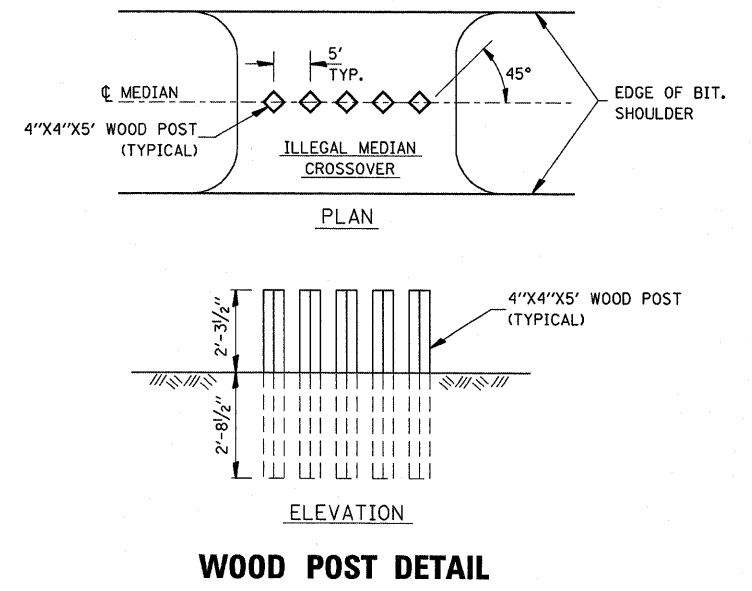
THE CONTRACTOR SHALL BE RESPONSIBLE FOR COORDINATING WITH THE ENGINEER TO MEET THIS REQUIREMENT.

COST OF SUPPLYING, INSTALLING, MAINTAINING AND REMOVING WIDTH RESTRICTION SIGNS SHALL BE PAID FOR AS WIDTH RESTRICTION SIGNING.

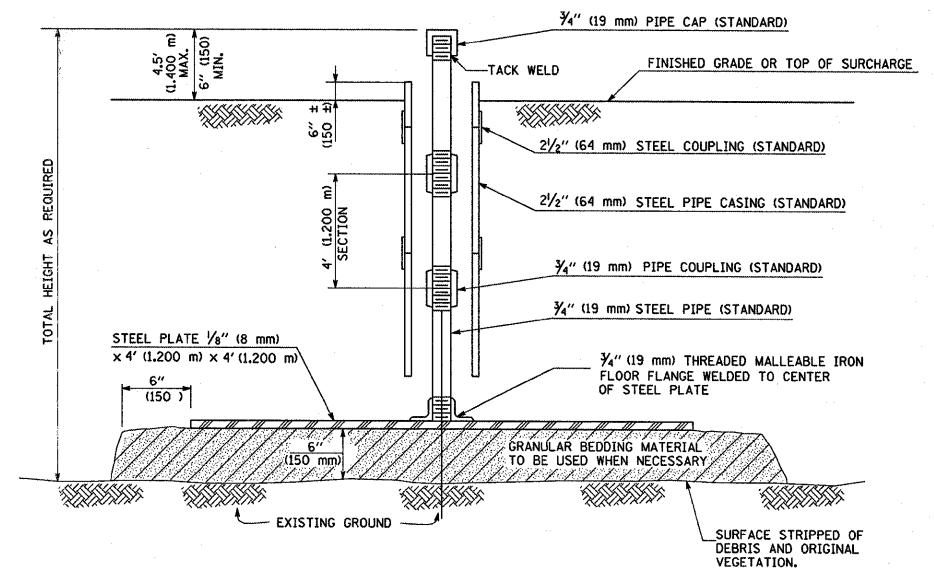
WIDTH RESTRICTION SIGNING DETAILS



BARRIER WALL MARKER



WOOD POST DETAIL



SETTLEMENT PLATFORM DETAIL

1. SEE SECTION 204.06 OF THE STANDARD SPECIFICATIONS FOR ROAD AND BRIDGE CONSTRUCTION
 2. TWO SETTLEMENT PLATFORMS SHALL BE CONSTRUCTED AT THE SITE OF THE ABANDONED RAILROAD STRUCTURES - ONE FOR STAGE I AND ONE FOR STAGE II CONSTRUCTION. THE COST IS INCLUDED IN THE COST OF FURNISHED EXCAVATION

FILE NAME =	USER NAME = braboygo	DESIGNED -	REVISED -
ca:\piv_work\pivdot\braboygo\0112640\0368908-sht-details.DGN		DRAWN -	REVISED -
PLOT SCALE = 50.0538' / IN.		CHECKED -	REVISED -
PLOT DATE = Sep 07, 2009 - 01:36:32 PM		DATE -	REVISED -

STATE OF ILLINOIS DEPARTMENT OF TRANSPORTATION

DETAILS
 SCALE: _____ SHEET NO. ___ OF ___ SHEETS STA. _____ TO STA. _____

F.A. RTE. = I-80	SECTION = **	COUNTY = BUREAU	TOTAL SHEETS = 344	SHEET NO. = 290
			CONTRACT NO. 66908	

**06-[7BR&BR-1,7VB-M,6BR&6,7 RS-1 & I

ILLINOIS FED. AID PROJECT