

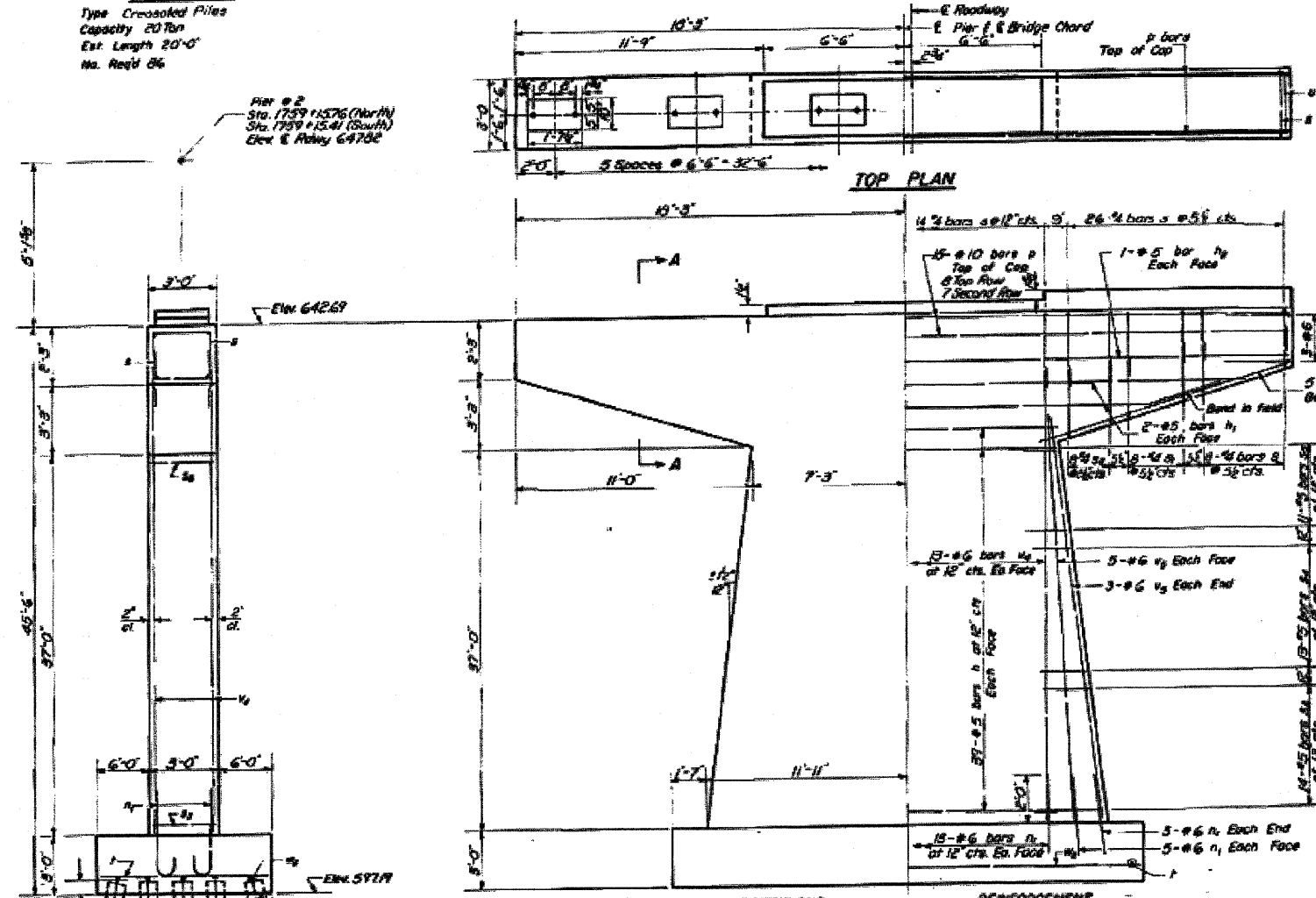
STATE OF ILLINOIS  
DEPARTMENT OF PUBLIC WORKS & BUILDINGS  
DIVISION OF HIGHWAYS

DATE	NO.	BUREAU	43	13	SHEET NO. 10
11-1-80	04-78-1	BUREAU	43	13	13 SHEETS

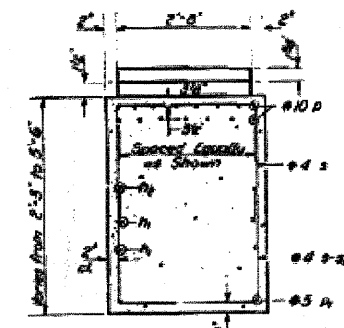
**FILE DATA**

Type Crossed Piles  
Capacity 20 Ton  
Est. Length 20'-0"  
No. Reqd 86

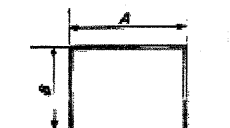
PIER #2  
Sta. 1759+15.76 (North)  
Sta. 1759+15.41 (South)  
Elev. & Rowly 64700



Note: All edges shall have standard 1/4" chamfers except footings.

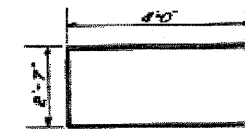


SECTION A-A



Bar	A	B
1	2'-8"	1'-11"
2	2'-8"	3'-0"
3	2'-8"	4'-7"
4	2'-8"	5'-8"
5	2'-8"	3'-11"
6	2'-8"	2'-3"

3 BARS



U BAR



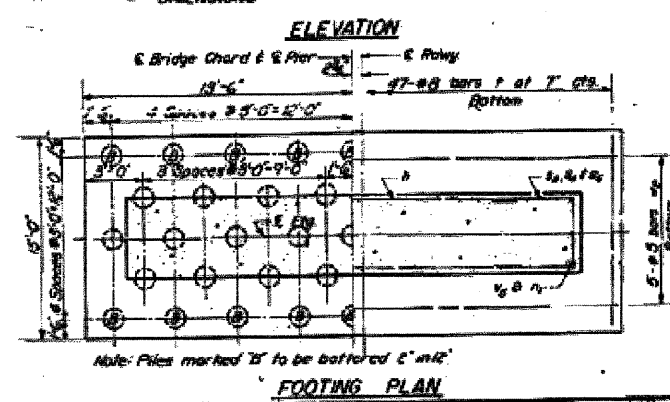
D BAR

**2 BRIDGES  
PIER #2  
BILL OF MATERIAL**

Bar	No.	Size	Length	Shape
n	156	#5	14'-3"	—
h	16	#5	18'-3"	—
h <sub>2</sub>	8	#5	18'-9"	—
h <sub>3</sub>	104	#6	5'-0"	—
p	30	#10	36'-3"	—
h <sub>4</sub>	20	#5	12'-0"	—
h <sub>5</sub>	172	#4	6'-6"	—
h <sub>6</sub>	32	#4	8'-8"	—
h <sub>7</sub>	32	#4	10'-10"	—
h <sub>8</sub>	56	#5	14'-0"	—
h <sub>9</sub>	52	#5	10'-6"	—
h <sub>10</sub>	44	#5	7'-6"	—
f	96	#8	14'-9"	—
v	12	#6	10'-7"	—
w	52	#6	48'-5"	—
u	52	#5	38'-0"	—
q	10	#5	26'-6"	—
Class X Concrete		Cu Yds	6060	
Reinforcement Bars		Lbs	21,770	
Crossed Piles		Lin Ft	1720	
Class A Exc. for Sheet		Cu Yds	396	
Class B Exc. for Sheet		Cu Yds	201	

PIER #2  
F.A.I. RT. 60 SEC. 6-7B-1  
BUREAU COUNTY  
STA. 1758+70

DESIGNED James K. Ponce  
CHECKED Dale E. R...  
DRAWN M.A. Sch...  
APPROVED R.R. B...  
Nov 2 1980



P-2 Re-drawn 7-17-55 Rev. 1-25-58

\*\*06-[7BR&BR-1,7VB-M,6BR&6.7 RS-1 & 1