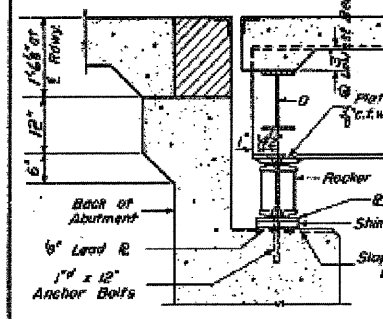
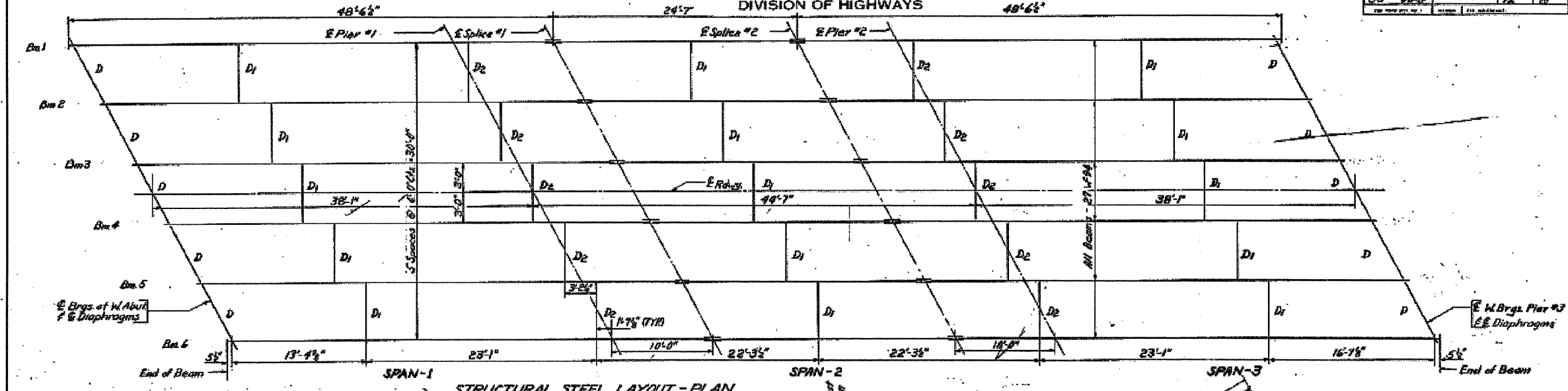
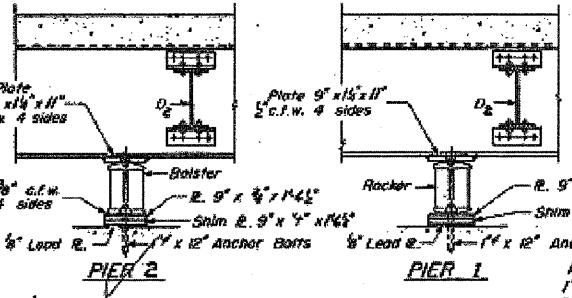


STATE OF ILLINOIS  
DEPARTMENT OF PUBLIC WORKS & BUILDINGS  
DIVISION OF HIGHWAYS

WORK NO.	SECTION	COUNTY	TOTAL SHEETS	SHEET NO.
F.A.I. 98-78	80	Bureau	48	11
26 SHEETS				

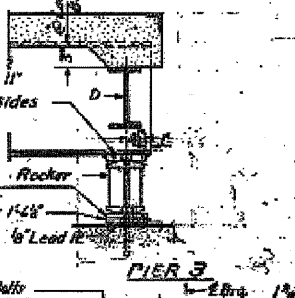


SECTION AT W. ABUTMENT

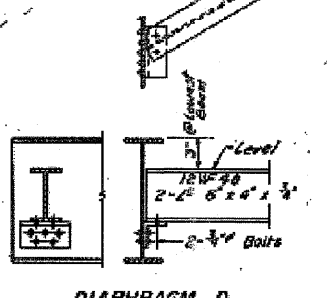


PIER 2

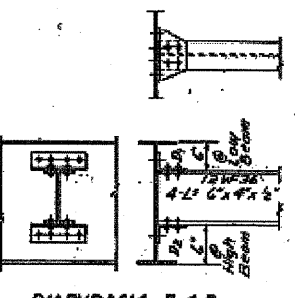
PIER 1



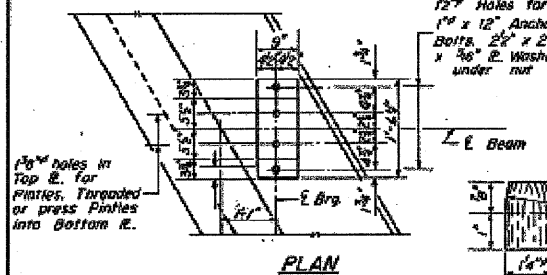
PIER 3



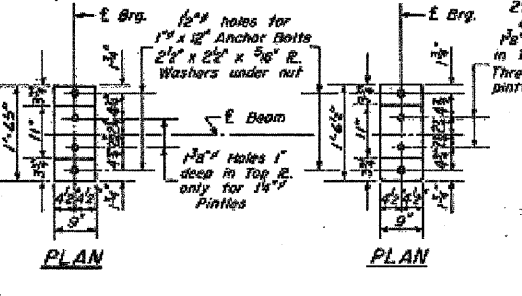
DIAPHRAGM D



DIAPHRAGM D1 & D2

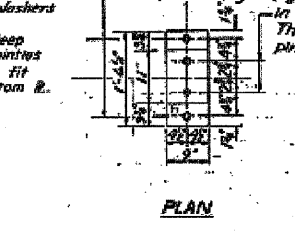


PLAN



PLAN

PLAN



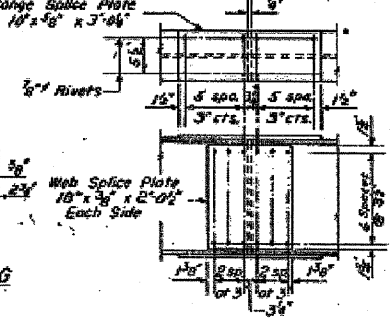
PLAN

DETAIL OF PINTLE

DETAIL OF BEARING AT PIER 1 & 3 AND W. ABUT.

DETAIL OF BEARING AT PIER 2

DETAIL OF SPLICE - 2# Required



NOTE: For Top of Beam Elevations and Table of 'd' Dimensions see sheet D.

STRUCTURAL STEEL DETAILS.  
3-SPAN CONTINUOUS UNIT, SKEWED  
NORTH AND SOUTH STRUCTURES  
OVER I.R. 352 AND BRUSH CREEK  
F.A.I. 78-80 SEC. 06-7(12,1)  
BUREAU COUNTY  
STA. 1612 + 974.0 (F.A.I. RT 80)

DESIGNED	Checked	DATE	Nov 29 '60
CHECKED	M. Parnoch	EXAMINED	W. E. Boush
DRAWN	W. A. Sauson	APPROVED	R. R. Boush
CHECKED	RAT		

I-2-R Re-drawn 9-23-59