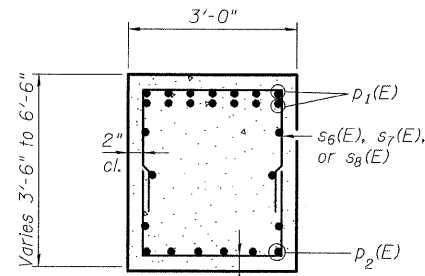


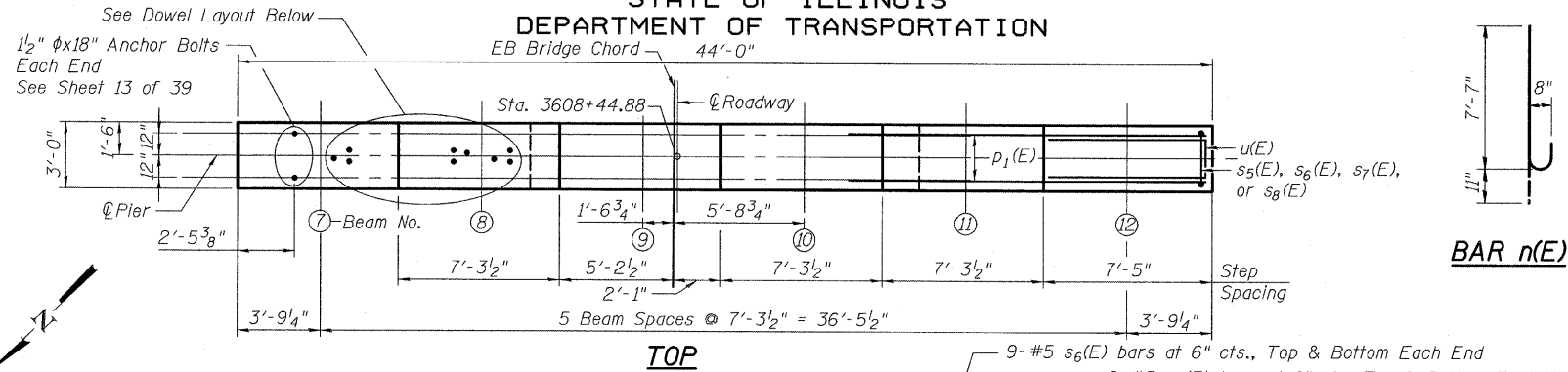
STATE OF ILLINOIS
DEPARTMENT OF TRANSPORTATION

BILL OF MATERIAL

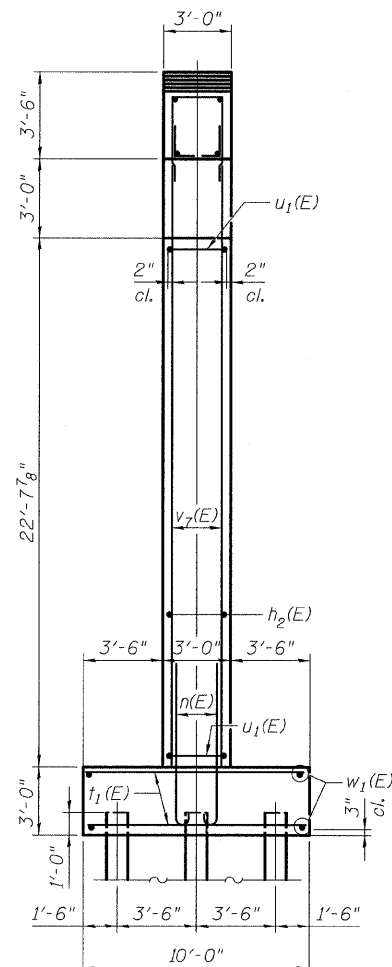
Bar	No.	Size	Length	Shape
$h_1(E)$	4	#5	21'-8"	—
$h_2(E)$	48	#5	17'-2"	—
$h_3(E)$	6	#5	43'-8"	—
$h_4(E)$	6	#5	35'-2"	—
$n(E)$	80	#8	8'-6"	—
$p_1(E)$	14	#10	43'-8"	—
$p_2(E)$	12	#7	16'-4"	—
$s_3(E)$	23	#5	6'-8"	□
$s_5(E)$	27	#5	11'-8"	□
$s_6(E)$	36	#5	11'-0"	□
$s_7(E)$	36	#5	10'-0"	□
$s_8(E)$	36	#5	9'-0"	□
$t_1(E)$	70	#8	9'-8"	—
$u(E)$	6	#6	9'-10"	—
$u_1(E)$	46	#5	14'-4"	—
$v_6(E)$	54	#8	26'-8"	—
$v_7(E)$	26	#8	26'-11"	—
$v_8(E)$	30	#8	4'-2"	—
$w_1(E)$	20	#8	34'-2"	—
Reinforcement Bars, Epoxy Coated			POUND	18360
Structure Excavation			CU YD	189
Concrete Structures			CU YD	116.7
Furnishing Steel Piles HP14x73			Foot	1189
Driving Piles			Foot	1189
Test Pile Steel HP14x73			Each	1



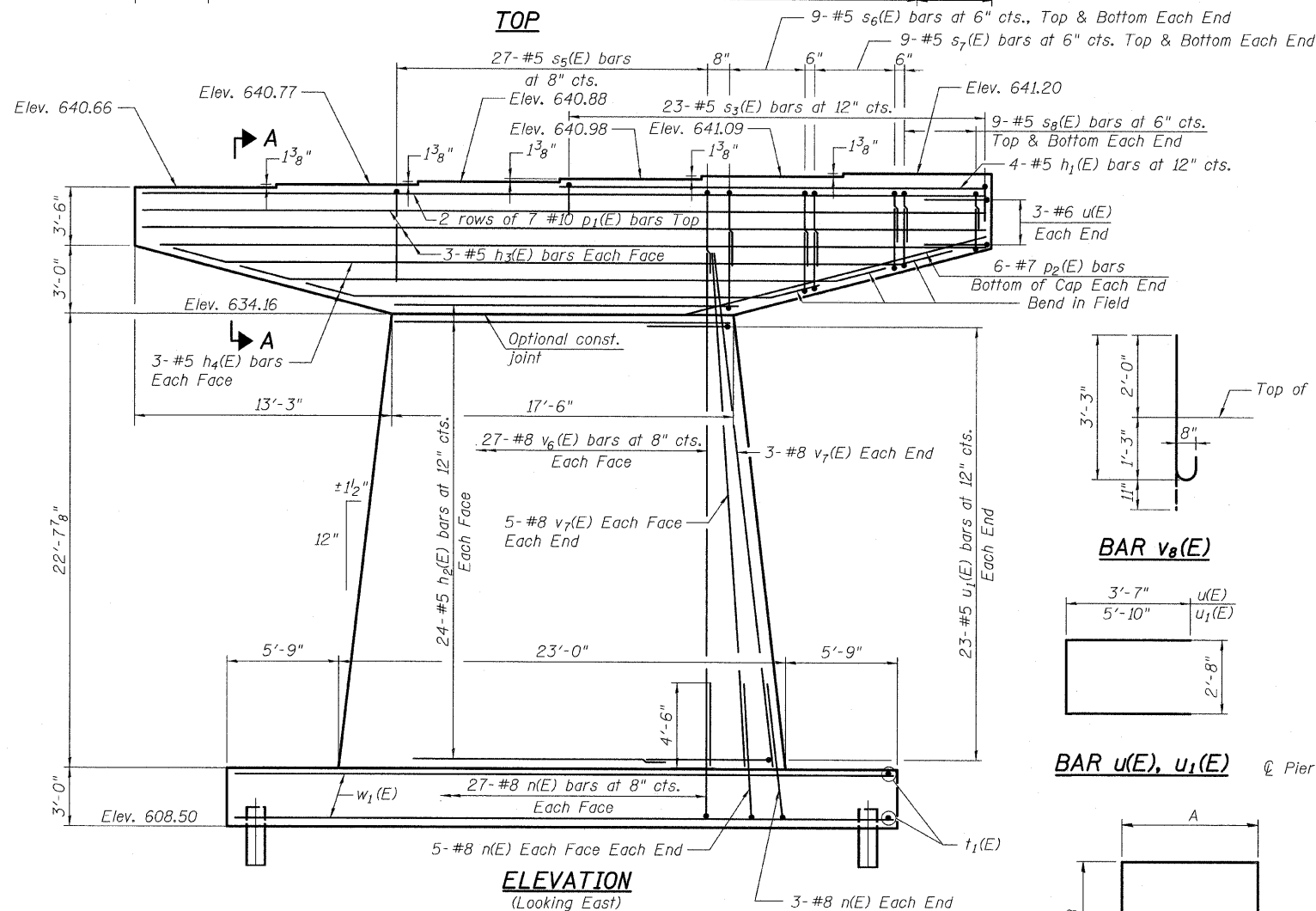
SECTION A-A



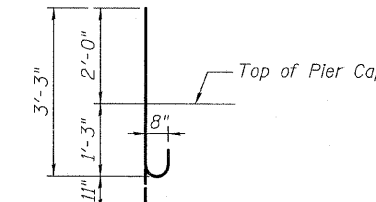
TOP



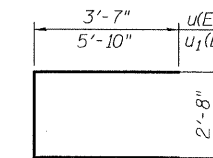
END VIEW



ELEVATION
(Looking East)



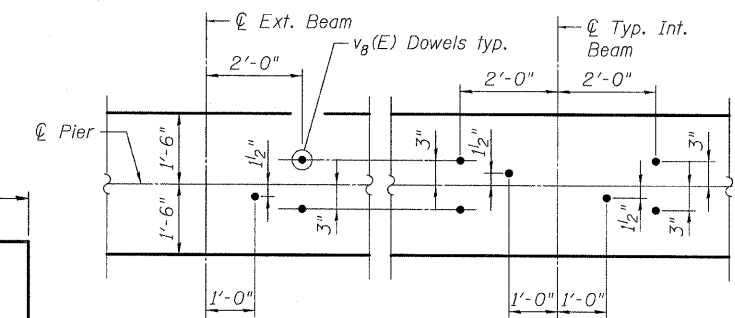
BAR $v_8(E)$



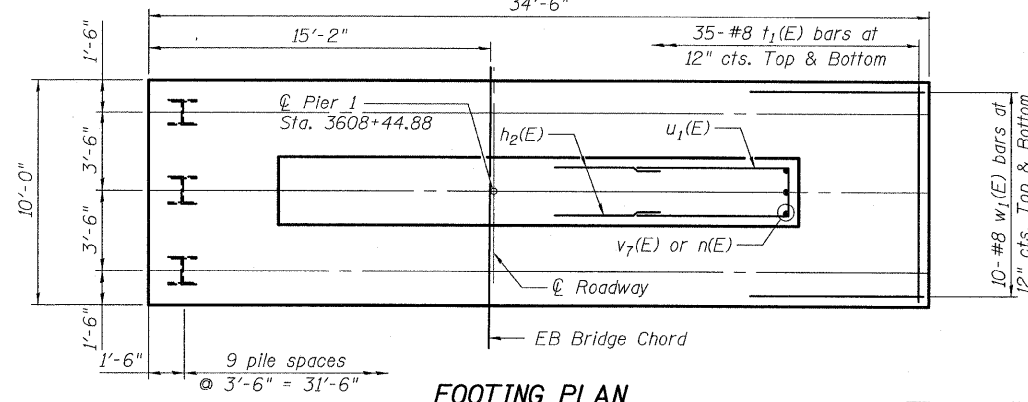
BAR $u(E), u_1(E)$

BARS $s_3(E), s_5(E)$ THRU $s_8(E)$
A & B DIMENSIONS

Bar	A	B
$s_3(E)$	2'-8"	2'-0"
$s_5(E)$	2'-8"	4'-6"
$s_6(E)$	2'-8"	4'-2"
$s_7(E)$	2'-8"	3'-8"
$s_8(E)$	2'-8"	3'-2"



DOWEL LAYOUT



FOOTING PLAN

NOTES:

- Space reinforcement in cap to miss anchor bolts.
- Pour steps monolithically with cap.
- For details of piles, see sheet 32 of 39.

PILE DATA

Type: HP 14X73
Nominal Required Bearing: 270 kips
Allowable Resistance Available: 90 kips
Est. Length: 48'
No. Production Piles: 29 Piles
No. Test Piles: 1 Pile

DESIGNED AD
CHECKED PDF
DRAWN IM
CHECKED PDF

SHEET NO 28	F.A. RTE.	SECTION	COUNTY	TOTAL SHEETS	SHEET NO.
39 SHEETS	80	*	BUREAU	344	226
FED. ROAD DIST. NO.			ILLINOIS FED. AID PROJECT		
CONTRACT NO. 66908					

TYLIN INTERNATIONAL