

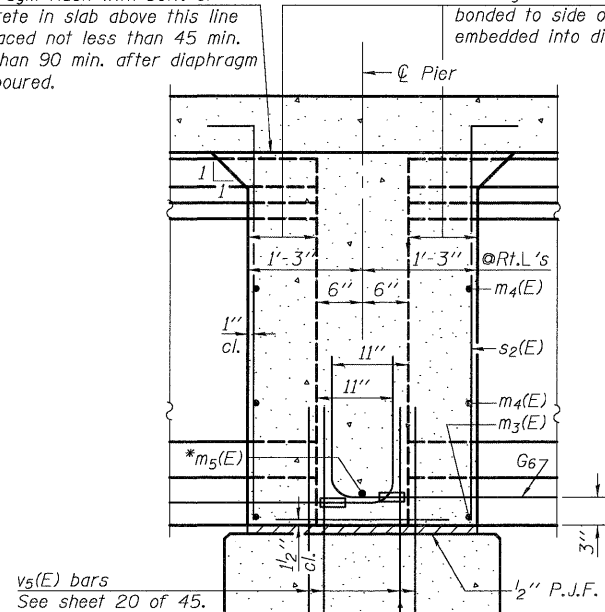
**SECTION A-A**

Dimensions at right angles to abutment, except as shown.

Location	A	B	C	D
W. Abut. WB	660.66	1'-8 <sup>3</sup> / <sub>4</sub> "	2'-5 <sup>1</sup> / <sub>2</sub> "	2'-1 <sup>7</sup> / <sub>8</sub> "
E. Abut. WB	660.64	1'-9 <sup>7</sup> / <sub>8</sub> "	2'-5 <sup>1</sup> / <sub>4</sub> "	2'-1 <sup>3</sup> / <sub>8</sub> "
W. Abut. EB	660.47	1'-9 <sup>5</sup> / <sub>8</sub> "	2'-5 <sup>1</sup> / <sub>4</sub> "	2'-1 <sup>3</sup> / <sub>8</sub> "
E. Abut. EB	660.82	1'-8 <sup>3</sup> / <sub>4</sub> "	2'-5 <sup>1</sup> / <sub>4</sub> "	2'-2 <sup>3</sup> / <sub>4</sub> "

Pour diaphragm flush with bott. of slab. Concrete in slab above this line shall be placed not less than 45 min. nor more than 90 min. after diaphragm has been poured.

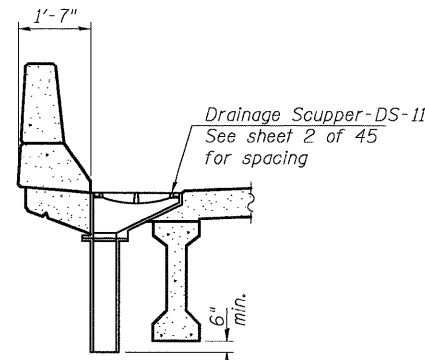
Roofing felt shall be bonded to side of beam embedded into diaphragm.



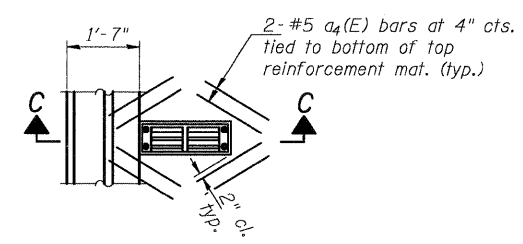
**SECTION B-B**

Dimensions along  $\bar{C}$  of beam, except as shown.

\* Tightly fasten the #8 bars together with No. 9 wire ties.



**SECTION C-C**



**PLAN AT SCUPPER**

Note: See sheet 16 & 17 of 45 for location of Sections A-A and B-B.

**DIAPHRAGM DETAILS**  
SN 006-0172 (EB) & SN 006-0173 (WB)

**CB** Coombe-Bloxdorf P.C.  
- CIVIL ENGINEERS -  
- STRUCTURAL ENGINEERS -  
- LAND SURVEYORS -  
Design Firm License No. 184-002703

PROJECT NO.	05061
SCALE	
DATE	6/25/09
DESIGN BY	RM/MCB
DRAWN BY	TFG
CHECKED BY	MCB

F.A.I. RTE.	SECTION	COUNTY	TOTAL SHEETS	SHEET NO.
80	*	BUREAU	344	172
CONTRACT NO. 66908				
FED. ROAD DIST. NO. 7 ILLINOIS FED. AID PROJECT				

\*06-17BR & BR-1, TVB-M, 6BR & 6, 7 RS-1 & 11

PLOT DATE = 09/06/2009  
FILE NAME = ..\0060172-0173-66908-019-diafrgm-detaills.dgn  
USER NAME = CFC

PI-2DDI

10-1-08