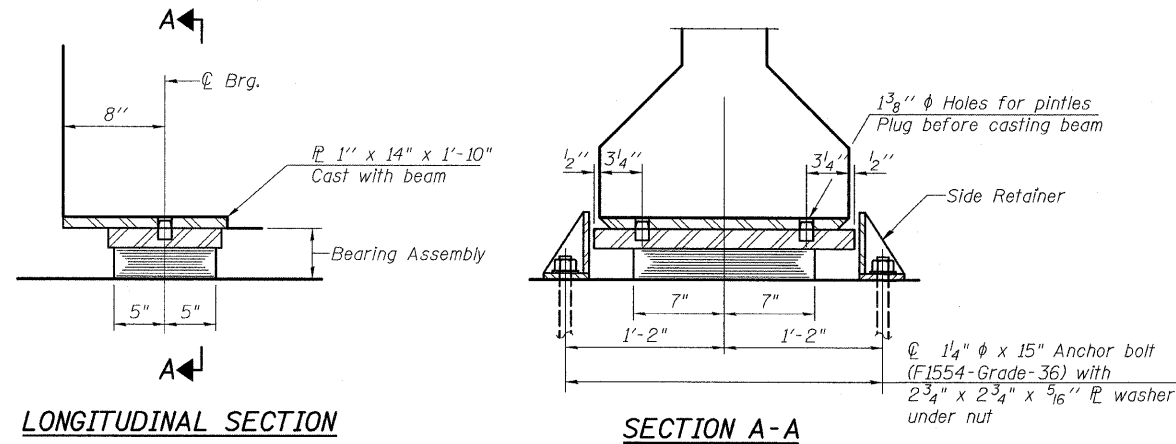


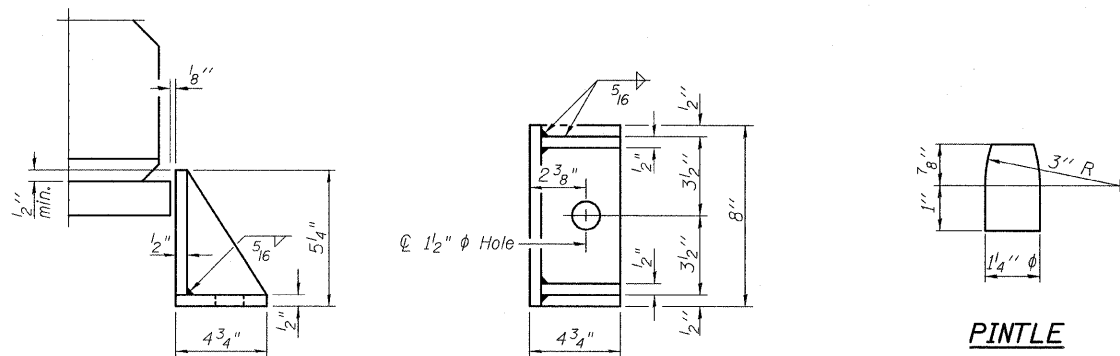
STATE OF ILLINOIS  
DEPARTMENT OF TRANSPORTATION



LONGITUDINAL SECTION

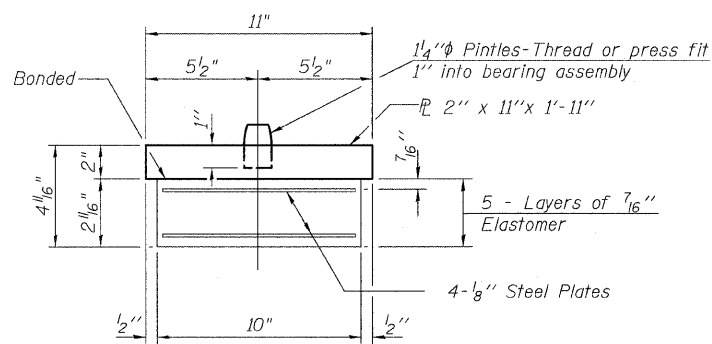
SECTION A-A

TYPE I ELASTOMERIC EXP. BRG. - PIERS 2 & 4



SIDE RETAINER

Equivalent rolled angle with stiffeners will be allowed in lieu of welded plates.



Notes:

Anchor bolts shall be ASTM F1554 all-thread (or an Engineer-approved alternate material) of the grade(s) and diameter(s) specified. ASTM A307 Grade C anchor bolts may be used in lieu of ASTM F1554 Grade 36 (Fy=36ksi). The corresponding specified grade of AASHTO M314 anchor bolts may be used in lieu of ASTM F1554.

Anchor bolts for side retainers may be cast in place or installed in holes drilled after members are in place.

Drilled and set anchor bolts shall be installed according to Article 521.06 of the Standard Specifications.

Side retainers and other steel members required for the bearing assembly shall be included in the cost of Elastomeric Bearing Assembly, Type I.

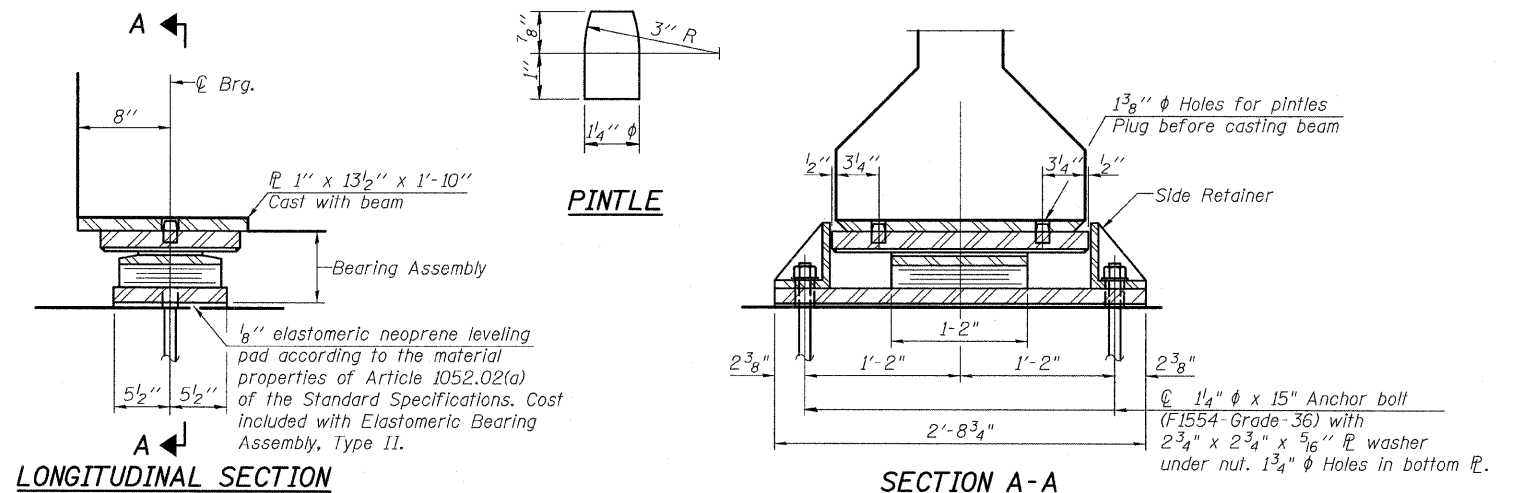
See sheet 33 and 38 of 59 for additional details of plate cast with beam.

All embedded and separate bearing plates, side retainers, anchor bolts, nuts, washers and pintles shall be galvanized according to AASHTO M111 or M232 (as applicable).

BILL OF MATERIAL

(Total for 2 bridges)

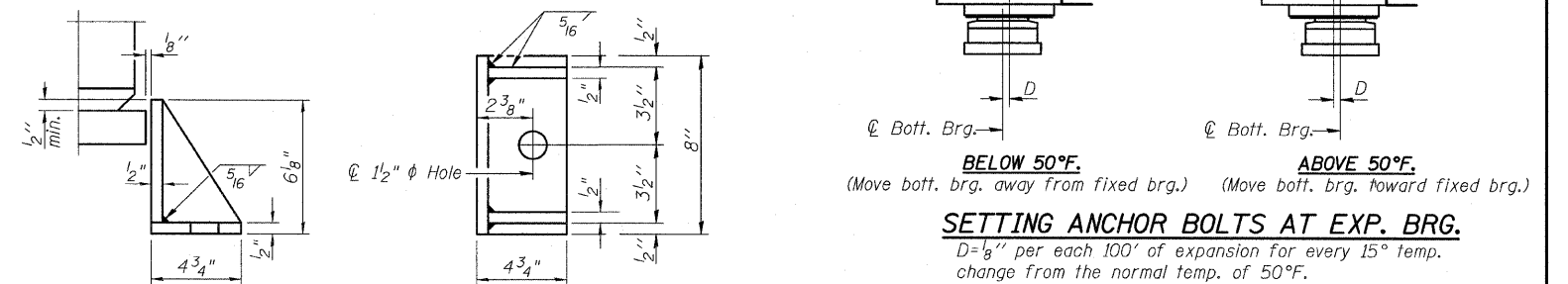
Item	Unit	Total
Elastomeric Bearing Assembly, Type I	Each	56
Anchor Bolts, 1/4" φ	Each	112



LONGITUDINAL SECTION

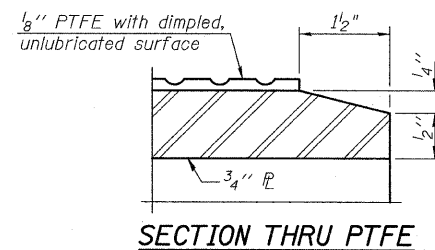
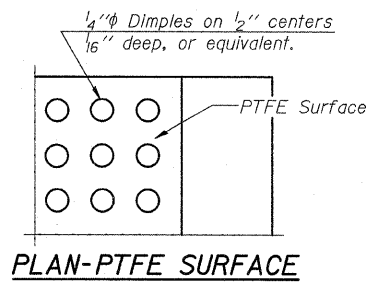
SECTION A-A

TYPE II ELASTOMERIC EXP. BRG. - PIER 1



SIDE RETAINER

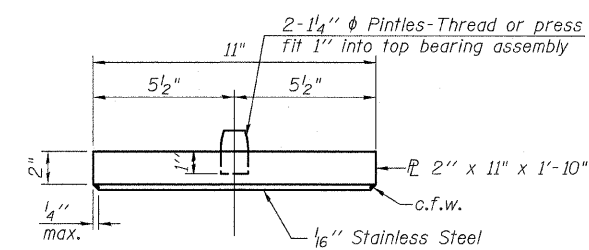
Equivalent rolled angle with stiffeners will be allowed in lieu of welded plates.



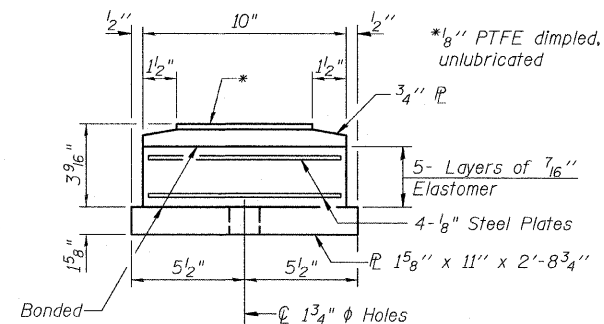
BILL OF MATERIAL

(Total for 2 bridges)

Item	Unit	Total
Elastomeric Bearing Assembly, Type II	Each	28
Anchor Bolts, 1/4" φ	Each	56



TOP BEARING ASSEMBLY



BOTTOM BEARING ASSEMBLY

BELOW 50°F.

(Move bott. brg. away from fixed brg.)

ABOVE 50°F.

(Move bott. brg. toward fixed brg.)

SETTING ANCHOR BOLTS AT EXP. BRG.

D = 1/8" per each 100' of expansion for every 15° temp. change from the normal temp. of 50°F.

Notes:

Anchor bolts shall be ASTM F1554 all-thread (or an Engineer-approved alternate material) of the grade(s) and diameter(s) specified. ASTM A307 Grade C anchor bolts may be used in lieu of ASTM F1554 Grade 36 (Fy=36ksi). The corresponding specified grade of AASHTO M314 anchor bolts may be used in lieu of ASTM F1554.

Anchor bolts for Type II bearings shall be placed in holes in the concrete drilled through holes in the bottom bearing plate after members are in place. Side retainers shall be placed after bolts are installed.

Drilled and set anchor bolts shall be installed according to Article 521.06 of the Standard Specifications.

Side retainers and other steel members required for the bearing assembly shall be included in the cost of Elastomeric Bearing Assembly, Type II.

The 1/8" PTFE sheet shall be bonded directly to the top steel plate with a two-component, medium viscosity epoxy resin, conforming to the requirements of the Federal Specification MMM-A-134, Type I. The bond agent shall be applied on the full area of the contact surfaces.

Bonding of 1/8" PTFE sheet during vulcanizing process will be permitted provided the process and method of adjusting assembly height is approved by the Engineer.

See sheet 33 & 38 of 59 for additional details of plate cast with beam.

All embedded and separate bearing plates, side retainers, anchor bolts, nuts, washers and pintles shall be galvanized according to AASHTO M111 or M232 (as applicable).

BEARINGS

STRUCTURE NO. 006-0170 EB  
STRUCTURE NO. 006-0171 WB

DESIGNED	-	PK
CHECKED	-	PDF SP
DRAWN	-	PK
CHECKED	-	PDF

SHEET NO.	F.A. RTE.	SECTION	COUNTY	TOTAL SHEETS	SHEET NO.
59 SHEETS	80	*	BUREAU	344	133
FED. ROAD DIST. NO.			ILLINOIS FED. AID PROJECT		
CONTRACT NO. 66908					

TYLIN INTERNATIONAL