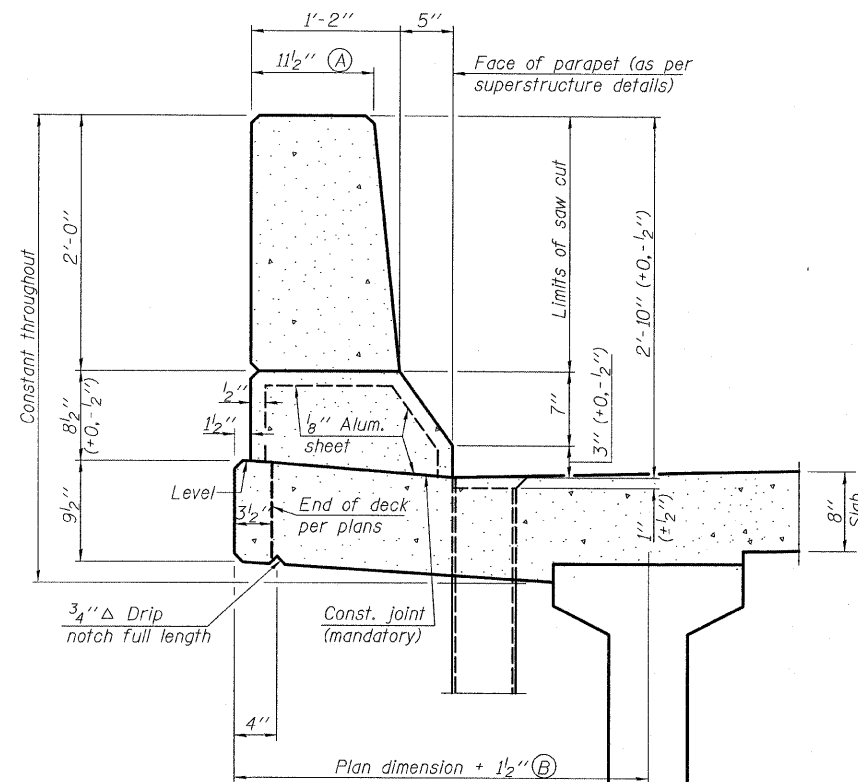
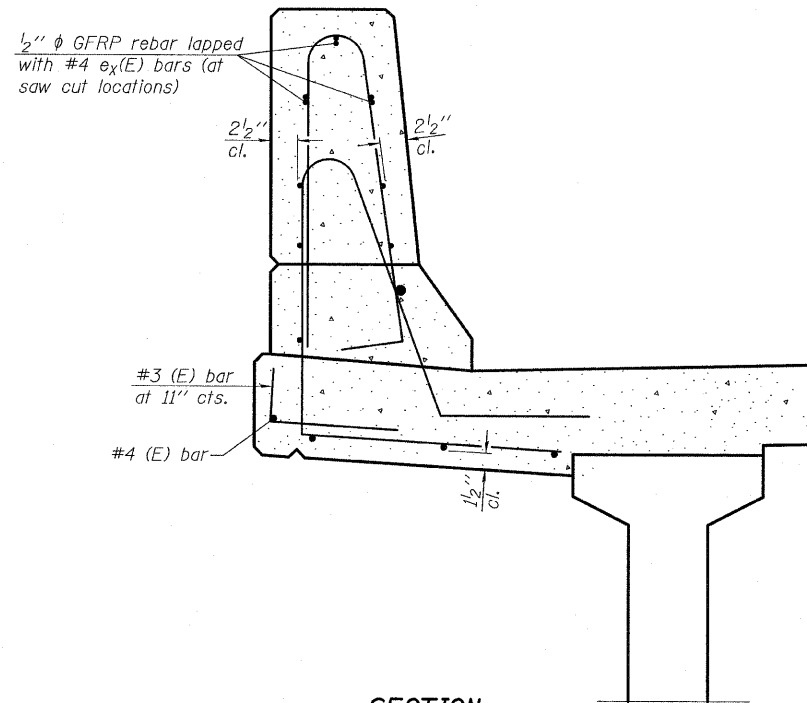


STATE OF ILLINOIS
DEPARTMENT OF TRANSPORTATION



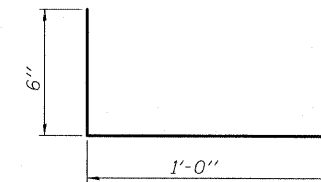
SECTION
(Showing dimensions)



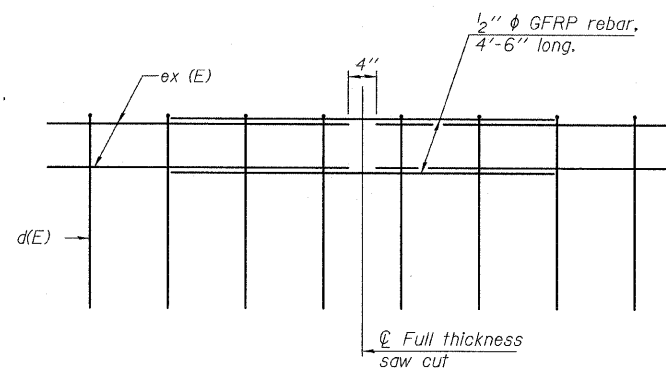
SECTION
(Showing reinforcement clearances for slip forming and additional reinforcement bars)

GENERAL NOTES

All dimensions shall remain the same as shown on contract plans, except dimensions A and B which are to be revised as shown to provide additional clearance. Additional concrete needed to revise dimension A and B = 0.0165 cu. yds./ft. of parapet.
Place aluminum sheet in curb portion at and near piers. Full thickness saw cut at all joint locations in lieu of cork joint filler.



#3 (E) BAR



GFRP REBAR STIFFENING DETAIL
(Place as shown in parapet section at each parapet joint location.)

| |
|---------------|
| DESIGNED - SP |
| CHECKED - PDF |
| DRAWN - SP |
| CHECKED - PDF |

**CONCRETE PARAPET
SLIPFORMING OPTION
STRUCTURE NO. 006-0170 EB
STRUCTURE NO. 006-0171 WB**

| | | | | | |
|---------------------------|---|--------------|------------------|---------------------|------------------|
| SHEET NO. 22 59 SHEETS | F.A. RTE. 80 | SECTION * | COUNTY BUREAU | TOTAL SHEETS 344 | SHEET NO. 114 |
| | FED. ROAD DIST. NO. ILLINOIS FED. AID PROJECT | | | CONTRACT NO. 66908 | |

TYLIN INTERNATIONAL