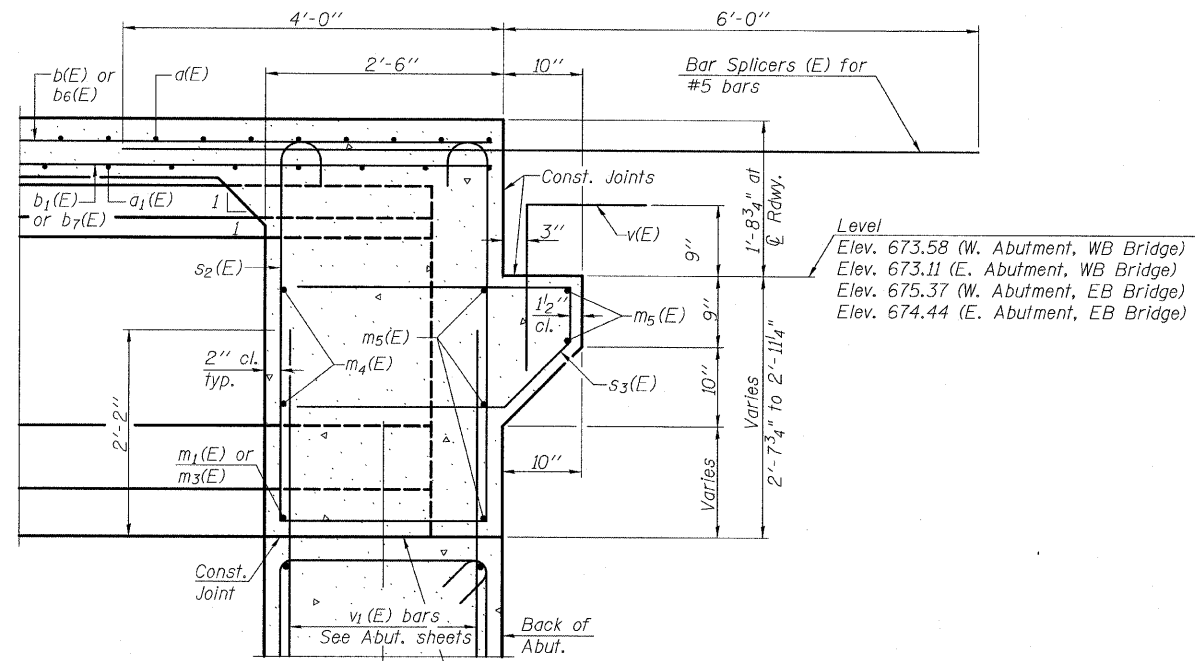


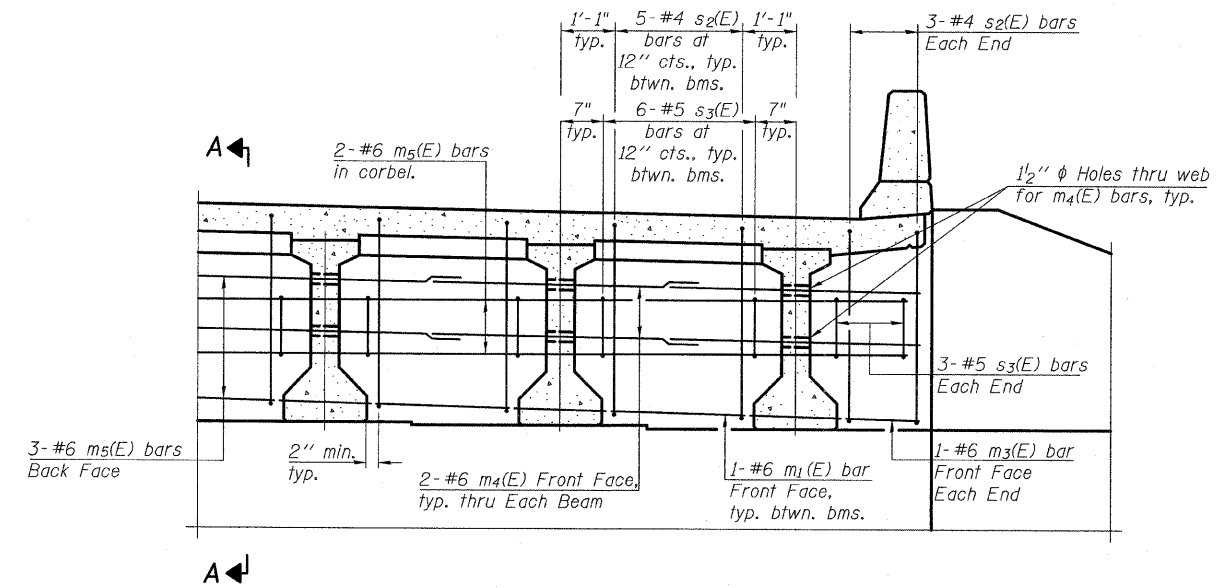
STATE OF ILLINOIS
DEPARTMENT OF TRANSPORTATION



Level
Elev. 673.58 (W. Abutment, WB Bridge)
Elev. 673.11 (E. Abutment, WB Bridge)
Elev. 675.37 (W. Abutment, EB Bridge)
Elev. 674.44 (E. Abutment, EB Bridge)

Beam ends shall be set on an initial $\frac{1}{2}$ " min. grout (2:1 sand and portland cement, very dry mix) to provide full bearing. Any excess grout squeezed out from under the beam shall be removed. Cost included with Concrete Structures.

SECTION A-A



DIAPHRAGM ELEVATION AT ABUTMENT

Notes:

- Reinforcement bars in diaphragm are billed with superstructure on sheet 15 and 18 of 59.
- Concrete in diaphragm is included with Concrete Superstructure on sheet 15 and 18 of 59.
- For details of bars $s(E)$, $s_1(E)$ and $s_2(E)$ see sheet 15 and 18 of 59.
- The $s_2(E)$ and $s_3(E)$ bars shall be placed parallel to the beams.
- Spacing for these bars shall be at right angles to the beams.

DESIGNED	- I.M.
CHECKED	- PDF
DRAWN	- I.M.
CHECKED	- PDF

MIN. BAR LAP

(Diaphragms)
#6 bar = 2'-9"

ABUTMENT DIAPHRAGM DETAILS
STRUCTURE NO. 006-0170 EB
STRUCTURE NO. 006-0171 WB

SHEET NO. 21	F.A. RTE.	SECTION	COUNTY	TOTAL SHEETS	SHEET NO.
	80	*	BUREAU	344	115
59 SHEETS	CONTRACT NO. 66908				
FED. ROAD DIST. NO.		ILLINOIS FED. AID PROJECT			

TYLIN INTERNATIONAL