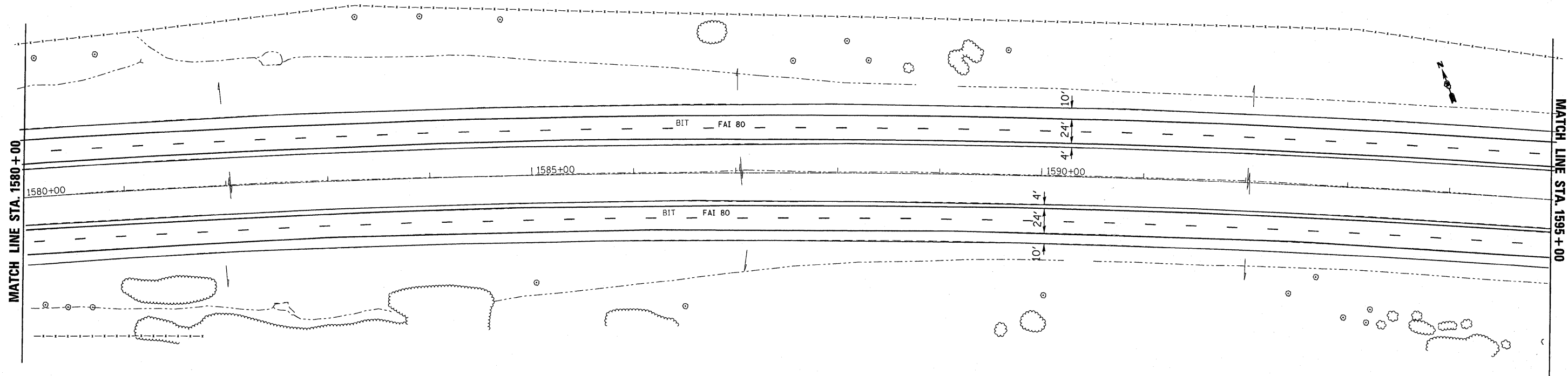
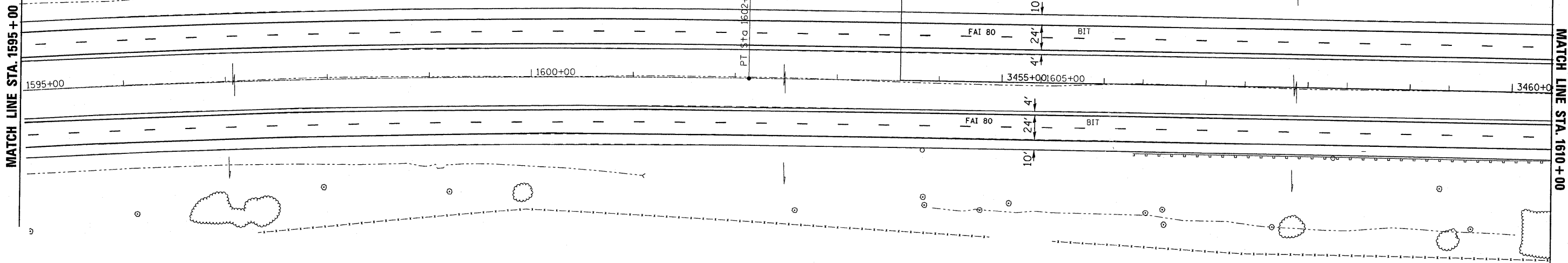


MATCH LINE STA. 1425 + 00



MATCH LINE STA. 1595 + 00



MATCH LINE STA. 1610 + 00

SEE SEPERATE PLAN SHEETS FOR  
WORK NEAR SN 006-0026 AND SN 006-0027\*

\*NOTE-SEPERATE SHEETS DRAWN SHOWING BRIDGE WORK  
AND ROADWAY WORK WERE DEVELOPED USING OLD STATIONING

\*\*06-[7BR&BR-1,7VB-M,6BR&6,7 RS-1 & I]

|   |  |            |           |
|---|--|------------|-----------|
| FILE NAME =   | USER NAME = braboyco                   | DESIGNED - | REVISED - |
| c:\pwork\pwork\braboyco\d0112640\d368908-sht-plan.dgn |  | DRAWN -    | REVISED - |
|   | PLOT SCALE = 50.0000 / IN.             | CHECKED -  | REVISED - |
|   | PLOT DATE = Sep 07, 2009 - 01:26:27 PM | DATE -     | REVISED - |

STATE OF ILLINOIS  
DEPARTMENT OF TRANSPORTATION

PLANS SHEETS STA 1580+00 TO STA 1610+00

SCALE: \_\_\_\_\_ SHEET NO. \_\_\_ OF \_\_\_ SHEETS STA. \_\_\_\_\_ TO STA. \_\_\_\_\_

|                    |               |                  |                     |                           |
|--------------------|---------------|------------------|---------------------|---------------------------|
| F.A. RTE.<br>I-80  | SECTION<br>** | COUNTY<br>BUREAU | TOTAL SHEETS<br>344 | SHEET NO.<br>37           |
| CONTRACT NO. 66908 |               |                  |                     | ILLINOIS FED. AID PROJECT |