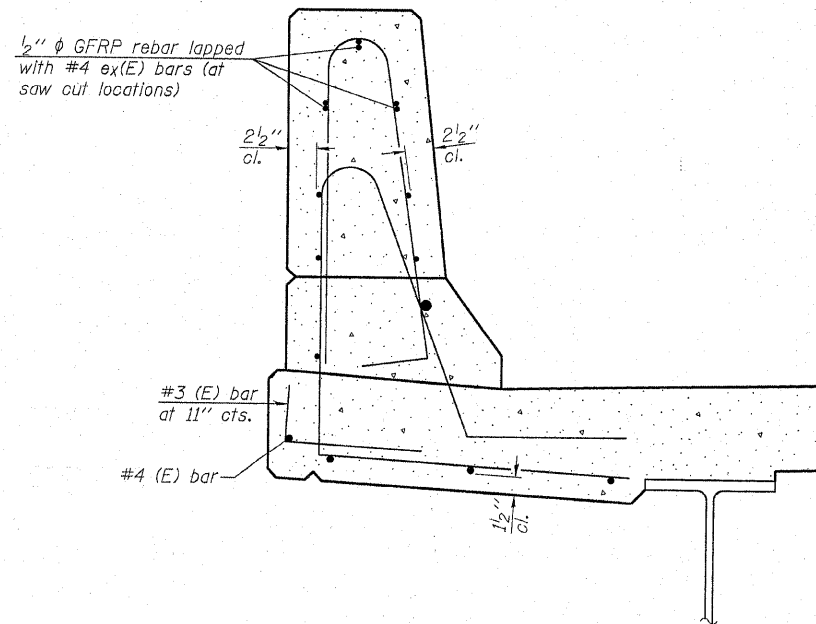
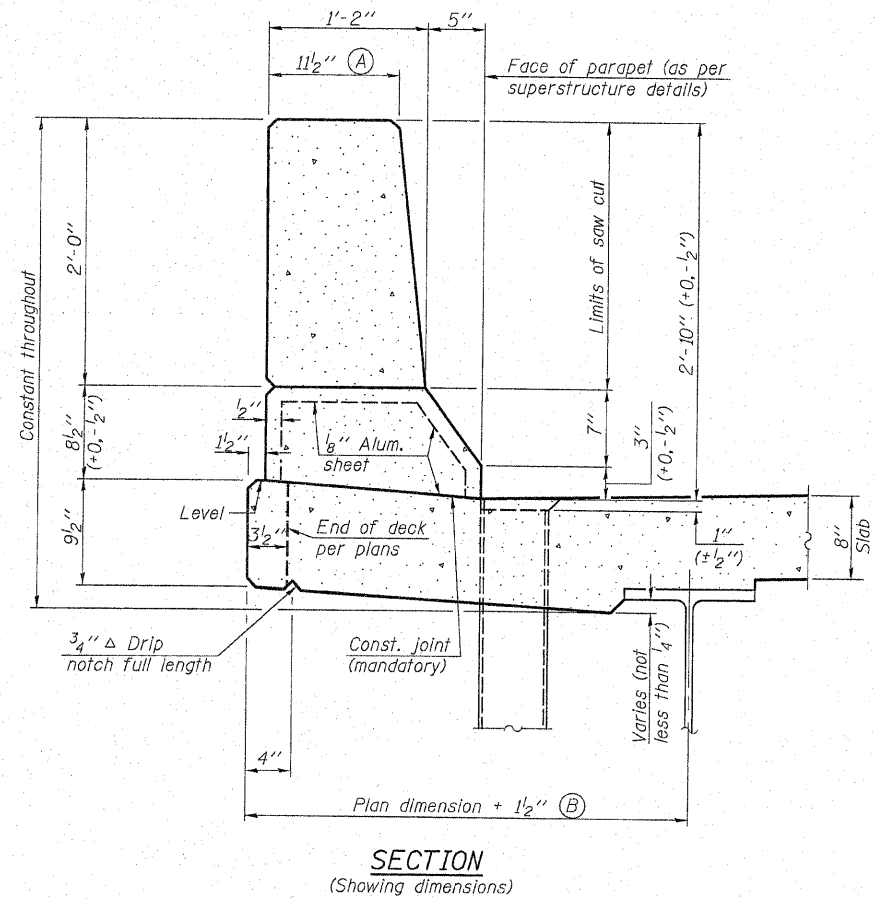


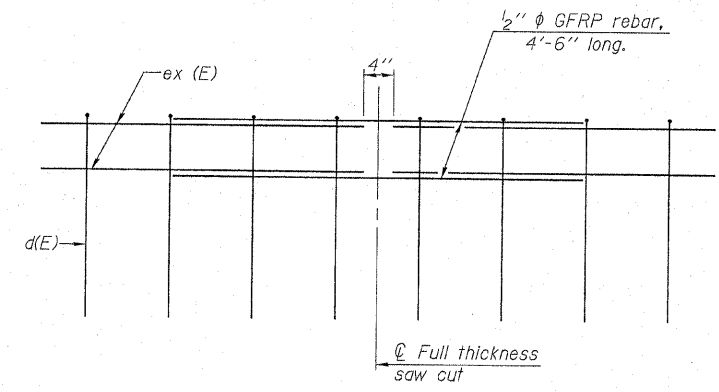
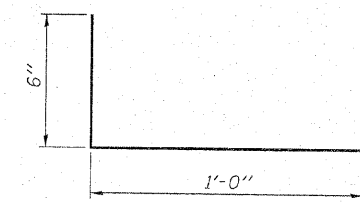
STATE OF ILLINOIS
DEPARTMENT OF TRANSPORTATION

F.A.P. RTE.	SECTION	COUNTY	TOTAL SHEETS	SHEET NO.
301	1-HBR-2F	WINNEBAGO	29	24
FED. ROAD DIST. NO. 7	ILLINOIS	CONTRACT NO. 64F62		

SHEET NO. 22
27 SHEETS



GENERAL NOTES
All dimensions shall remain the same as shown on contract plans, except dimensions A and B which are to be revised as shown to provide additional clearance. Additional concrete needed to revise dimension A and B = 0.0165 cu. yds./ft. of parapet.
Place aluminum sheet in curb portion at and near piers. Full thickness saw cut at all joint locations in lieu of cork joint filler.



DESIGNED	GUN / OAO
CHECKED	FCO
DRAWN	TCS / GUN
CHECKED	FCO

FOR INFORMATION ONLY
CONCRETE PARAPET SLIPFORMING OPTION
MERIDIAN ROAD OVER US 20
F.A.P. 301 (US 20) - SEC. 1-HBR-2 F
WINNEBAGO COUNTY
STATION 100+00
STRUCTURE NO. 101-0096

HOH HARRY O. HOFFER-ASSOCIATES, INC.
DESIGN AND CONSULTING ENGINEERS
55 East Jackson Blvd.
Suite 800
Chicago, IL 60604
312-346-8151
PROJECT NUMBER
2945

12:07:18 PM 7/22/2009 h:\pro\jects\2945\DGNS\Structural\Meridian_Road\Draws From_SDN\06H_Files\Final Drawings +2009\1010096\64F62\PARAPET_SLIPFORMING.dgn