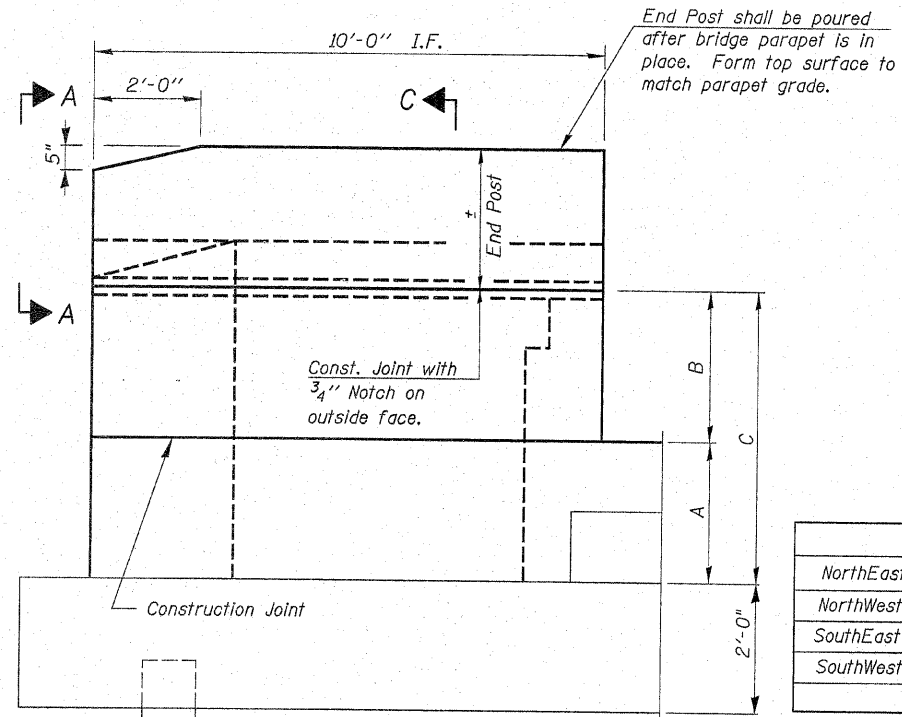


STATE OF ILLINOIS
DEPARTMENT OF TRANSPORTATION

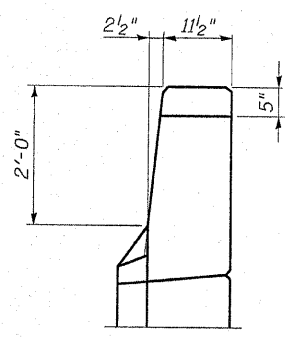
F.A.P. RTE.	SECTION	COUNTY	TOTAL SHEETS	SHEET NO.	SHEET NO. 16 27 SHEETS
301	1-HBR-2F	WINNEBAGO	29	18	
FED. ROAD DIST. NO. 7	ILLINOIS	CONTRACT NO. 64F62			



DIMENSIONS

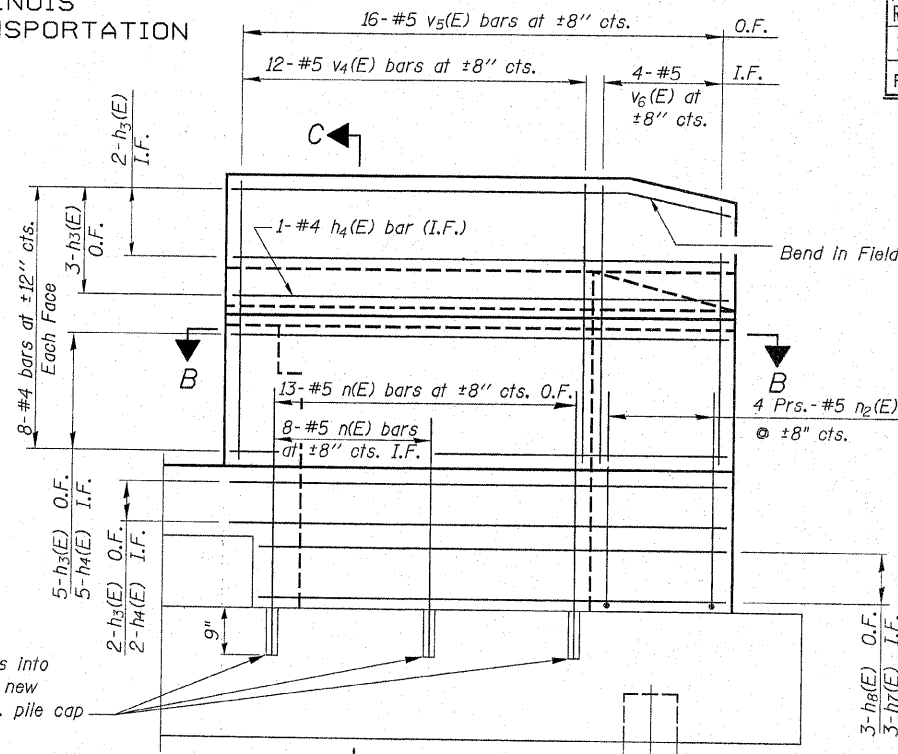
	A	B	C
NorthEast	3'-7 ⁷ / ₈ "	3'-7 ⁷ / ₈ "	7'-3 ³ / ₄ "
NorthWest	3'-8 ¹ / ₂ "	3'-7 ⁷ / ₈ "	7'-4 ³ / ₈ "
SouthEast	3'-6"	3'-7"	7'-1"
SouthWest	3'-5 ¹ / ₂ "	3'-8"	7'-1 ¹ / ₂ "

WING WALL ELEVATION
Showing Dimensions



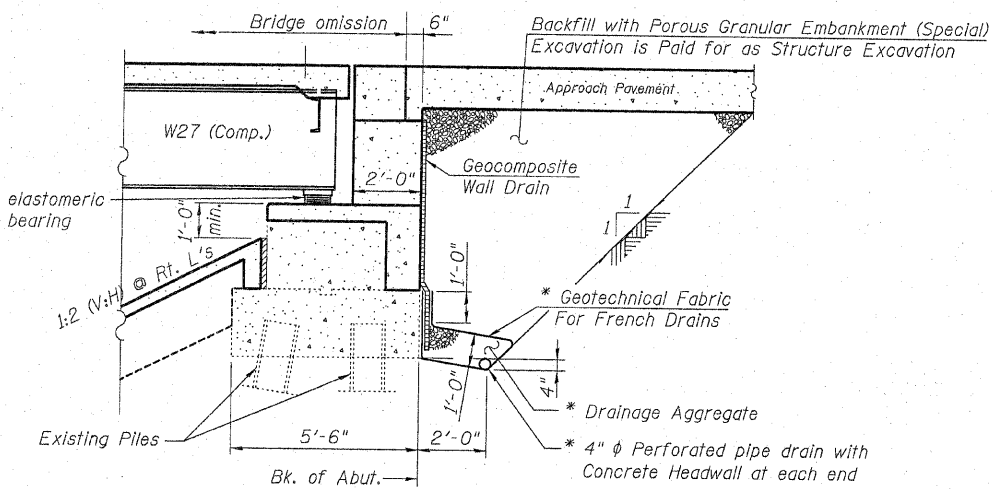
VIEW A-A

Epoxy Grout n(E) bars into exist. pile cap where new wingwalls sit on exist. pile cap



WING WALL ELEVATION
Showing Reinforcement

Note
O.F. = Outside Face
I.F. = Inside Face

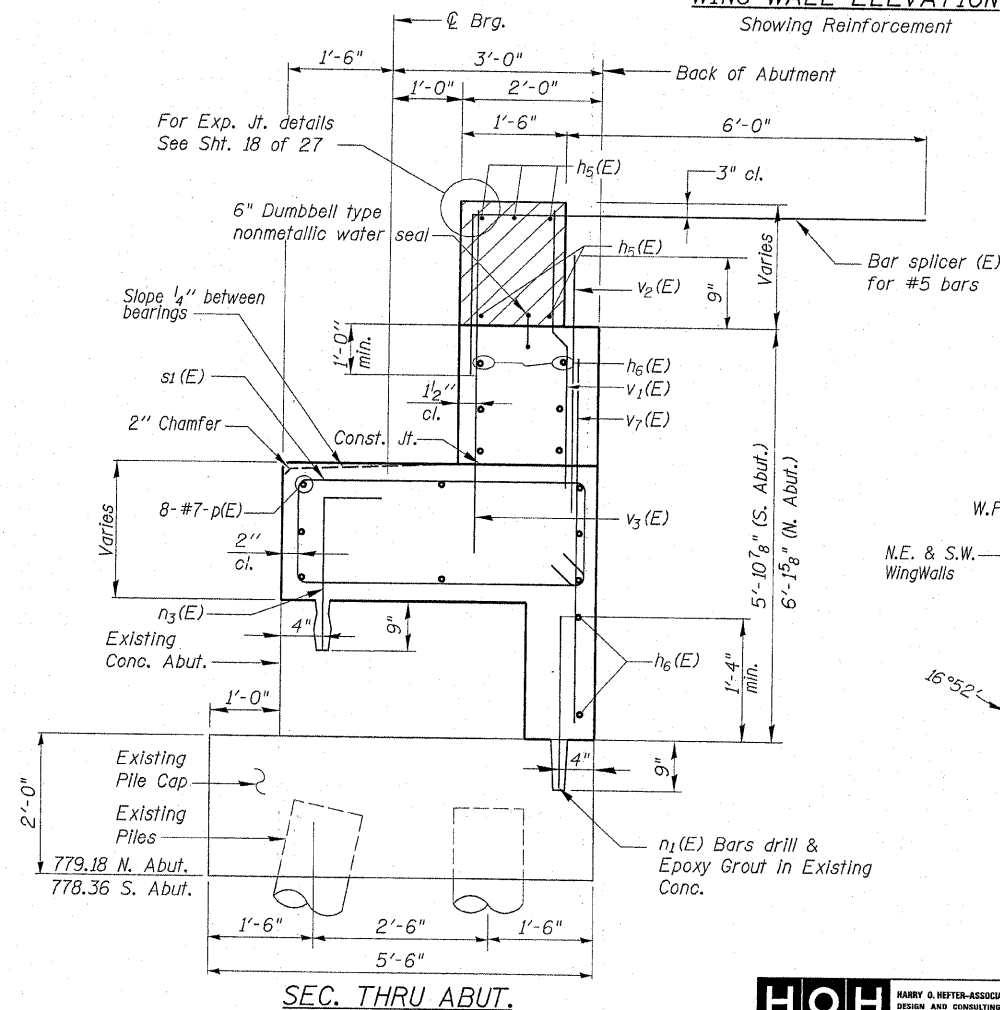


SECTION THRU PILE SUPPORTED STUB ABUTMENT
(Horiz. dim. @ Rt. L's)

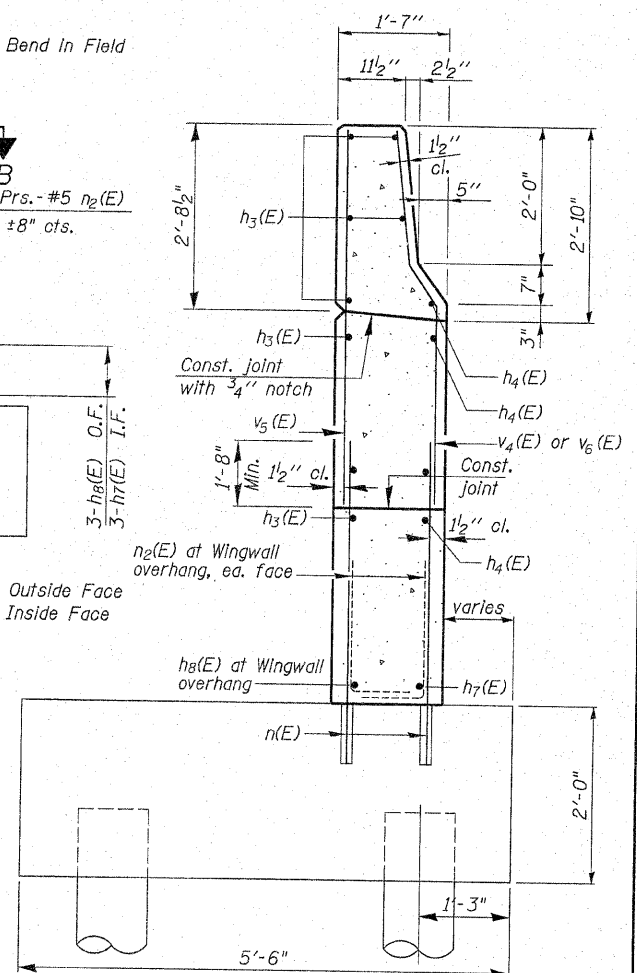
Note:
All drainage system components shall extend parallel to the abutment backwall until they intersect the wingwalls. The pipe shall be carefully extended under the existing wingwall pile cap. Existing piles shall be located, and not be damaged in the process of drilling the drainage pipe through. The pipe shall extend until intersecting the side slopes and drain into concrete headwalls. Excavated spaces below the pilecap shall be packed with Porous Granular Embankment (Special). (See Article 601.05 of the Standard Specifications and Highway Standard 601101).

DESIGNED	GUN / OAO
CHECKED	FCO
DRAWN	TCS / GUN
CHECKED	FCO

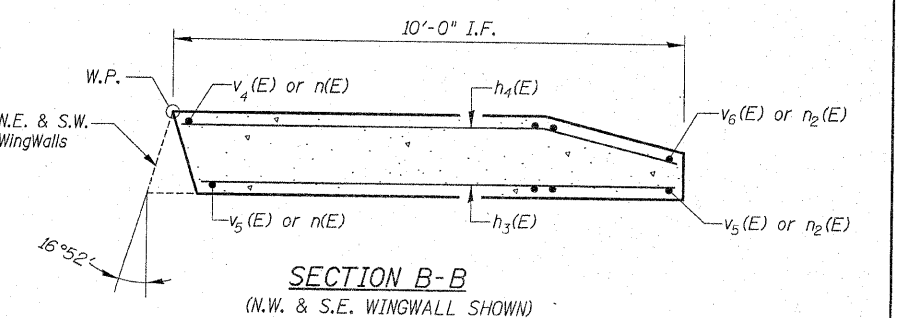
Notes:
Hatched area to be poured after superstructure false work has been removed. Quantity of concrete included with Concrete Superstructure.
Space reinforcement in cap to miss anchor bolts.
Pour steps monolithically with cap.
Quantity of concrete in end post included with Concrete Superstructure on sheet 9 of 27.



SEC. THRU ABUT.



SECTION C-C



SECTION B-B
(N.W. & S.E. WINGWALL SHOWN)

FOR INFORMATION ONLY
ABUTMENT DETAILS
MERIDIAN ROAD OVER US 20
F.A.P. 301 (US 20) - SEC. 1-HBR-2 F
WINNEBAGO COUNTY
STATION 100+00
STRUCTURE NO. 101-0096

1/22/2009 12:07:13 PM I:\projects\2945\DWGS\Structural\Meridian Road\Draws From SD\06\Files\Final Drawings\2009\10\0906-64P50-016-ABUTDET.MLS.dgn