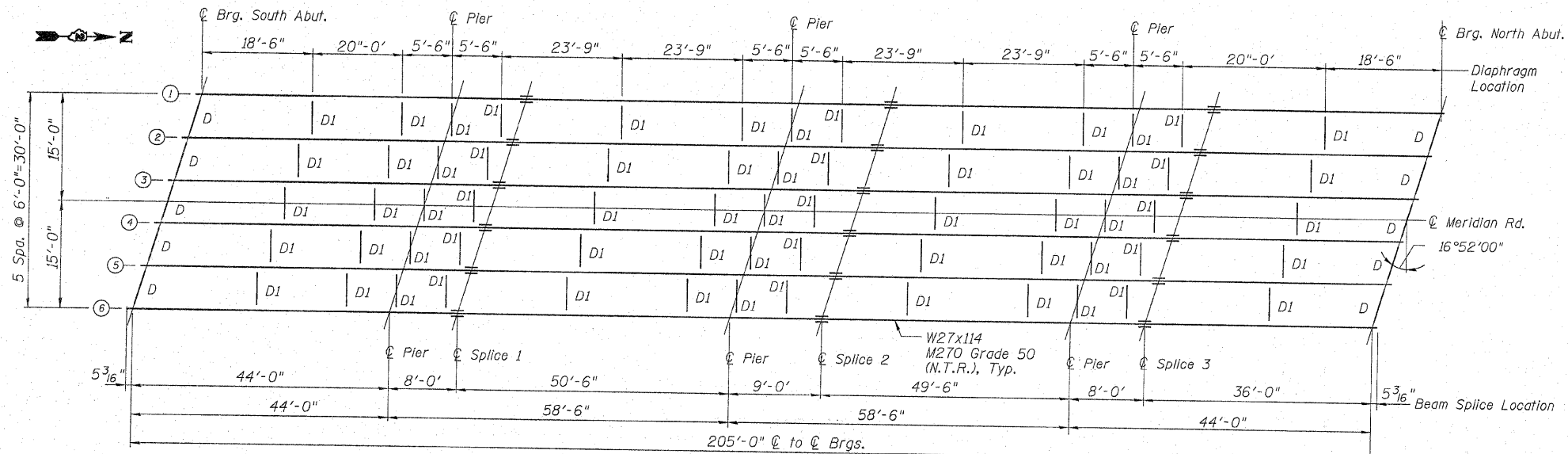


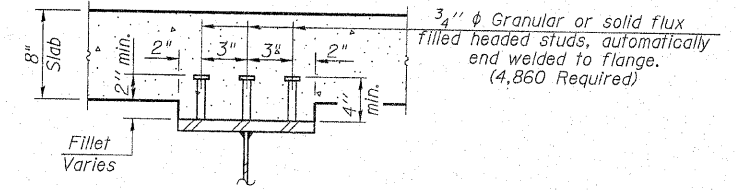
STATE OF ILLINOIS
DEPARTMENT OF TRANSPORTATION

F.A.P. RTE.	SECTION	COUNTY	TOTAL SHEETS	SHEET NO.	SHEET NO. 10 27 SHEETS
301	1-HBR-2F	WINNEBAGO	29	12	
FED. ROAD DIST. NO. 7	ILLINOIS	CONTRACT NO. 64F62			

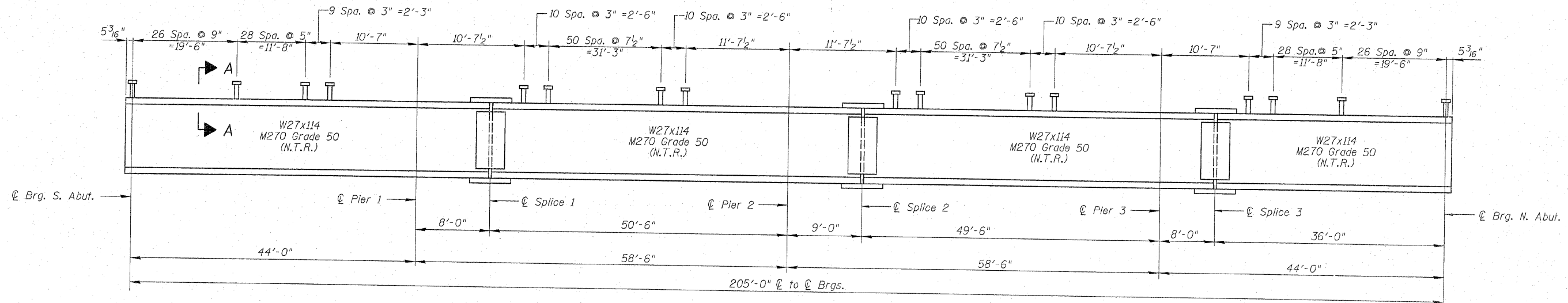


PLAN

See Sheet 11 of 27 for diaphragms D & D1



SECTION A-A



BEAM ELEVATION

NOTE:
Load carrying components designated "N.T.R." shall conform to the supplemental requirements for Notch Toughness, Zone 2.

TOP BEAM ELEVATIONS (FOR FABRICATION ONLY)						
Location	Beam Numbers					
	1	2	3	4	5	6
☉ BRG. S. ABUT.	786.612	786.712	786.802	786.792	786.692	786.572
☉ PIER 1	786.833	786.933	787.021	787.011	786.911	786.791
☉ SPLICE 1	786.873	786.973	787.060	787.050	786.950	786.830
☉ PIER 2	787.127	787.227	787.312	787.302	787.202	787.082
☉ SPLICE 2	787.172	787.272	787.356	787.346	787.246	787.126
☉ PIER 3	787.421	787.521	787.603	787.593	787.493	787.373
☉ SPLICE 3	787.461	787.561	787.648	787.633	787.533	787.413
☉ BRG. N. ABUT.	787.642	787.742	787.822	787.812	787.712	787.592

NOTE:
Stud Shear connectors are not included in this contract.

DESIGNED	GUN / OAO
CHECKED	FCO
DRAWN	TCS / GUN
CHECKED	FCO

STEEL FRAMING PLAN
MERIDIAN ROAD OVER US 20
F.A.P. 301 (US 20) - SEC. 1-HBR-2F
WINNEBAGO COUNTY
STATION 100+00
STRUCTURE NO. 101-0096

HOH HARRY D. HEFTER ASSOCIATES, INC.
DESIGN AND CONSULTING ENGINEERS
64 East Jackson Blvd.
Suite 500
Chicago, IL 60604
312-346-4101
2945

12:07:08 PM 7/22/2009 A:\projects\2945\Deliv\Structural\Meridian_Road\Draws From SD\Drawn Files\Final Dwg I-2009\1010096-64F62-010-STEELFRAME.dgn