

STATE OF ILLINOIS
DEPARTMENT OF TRANSPORTATION

F.A.P. RTE.	SECTION	COUNTY	TOTAL SHEETS	SHEET NO.	SHEET NO. 7 27 SHEETS
301	1-HBR-2F	WINNEBAGO	29	9	
FED. ROAD DIST. NO. 7		ILLINOIS	CONTRACT NO. 64F62		

WEST CURB LINE

Location	Station	Offset	Theoretical Grade Elevations
Bk. N. Abut.	101+10.09	-16.42	788.40
A	101+20.09	-16.42	788.44
B	101+30.09	-16.42	788.48
End N. Appr. Pav't.	101+40.09	-16.42	788.50

WEST EDGE OF PAVEMENT

Location	Station	Offset	Theoretical Grade Elevations
Bk. N. Abut.	101+08.75	-12.00	788.49
A	101+18.75	-12.00	788.53
B	101+28.75	-12.00	788.56
End N. Appr. Pav't.	101+38.75	-12.00	788.59

Ⓞ ROADWAY & PG

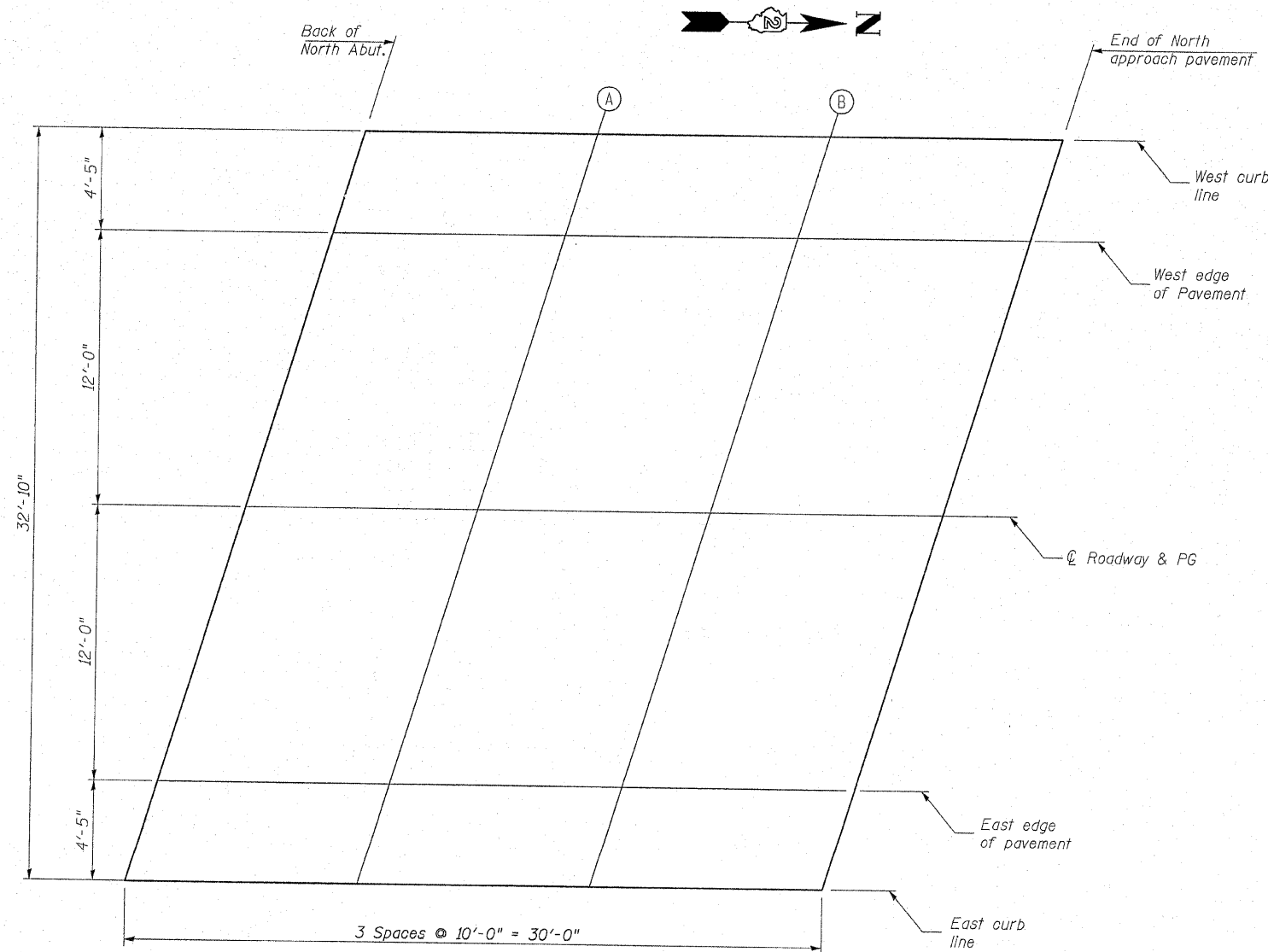
Location	Station	Offset	Theoretical Grade Elevations
Bk. N. Abut.	101+05.11	0.00	788.66
A	101+15.11	0.00	788.70
B	101+25.11	0.00	788.74
End N. Appr. Pav't.	101+35.11	0.00	788.77

EAST EDGE OF PAVEMENT

Location	Station	Offset	Theoretical Grade Elevations
Bk. N. Abut.	101+01.47	12.00	788.45
A	101+11.47	12.00	788.50
B	101+21.47	12.00	788.54
End N. Appr. Pav't.	101+31.47	12.00	788.57

EAST CURB LINE

Location	Station	Offset	Theoretical Grade Elevations
Bk. N. Abut.	101+00.14	16.42	788.35
A	101+10.14	16.42	788.40
B	101+20.14	16.42	788.44
End N. Appr. Pav't.	101+30.14	16.42	788.48



PLAN

DESIGNED	GUN / OAO
CHECKED	FCO
DRAWN	TCS / GUN
CHECKED	FCO

FOR INFORMATION ONLY
TOP OF NORTH
APPROACH SLAB ELEVATIONS
MERIDIAN ROAD OVER US 20
F.A.P. 301 (US 20) - SEC. 1-HBR-2F
WINNEBAGO COUNTY
STATION 100+00
STRUCTURE NO. 101-0096

12/07/05 PM 7/22/2009 I:\proj\roads\2945\Structural\Meridian_Road\Draws from SDN\Drawn Files\Final Drawings\2009\10\0096\64D50-007-1\Approach.dgn