

STATE OF ILLINOIS
DEPARTMENT OF TRANSPORTATION

F.A.P. RTE.	SECTION	COUNTY	TOTAL SHEETS	SHEET NO.
301	1-HBR-2F	WINNEBAGO	29	8
FED. ROAD DIST. NO. 7	ILLINOIS	CONTRACT NO. 64F62		

SHEET NO. 6
27 SHEETS

WEST CURB LINE

Location	Station	Offset	Theoretical Grade Elevations
End S. Appr. Pav't.	98+69.87	-16.42	787.20
A	98+79.87	-16.42	787.25
B	98+89.87	-16.42	787.30
Bk. S. Abut.	98+99.87	-16.42	787.35

WEST EDGE OF PAVEMENT

Location	Station	Offset	Theoretical Grade Elevations
End S. Appr. Pav't.	98+68.53	-12.00	787.29
A	98+78.53	-12.00	787.34
B	98+88.53	-12.00	787.39
Bk. S. Abut.	98+98.53	-12.00	787.44

☉ ROADWAY & PG

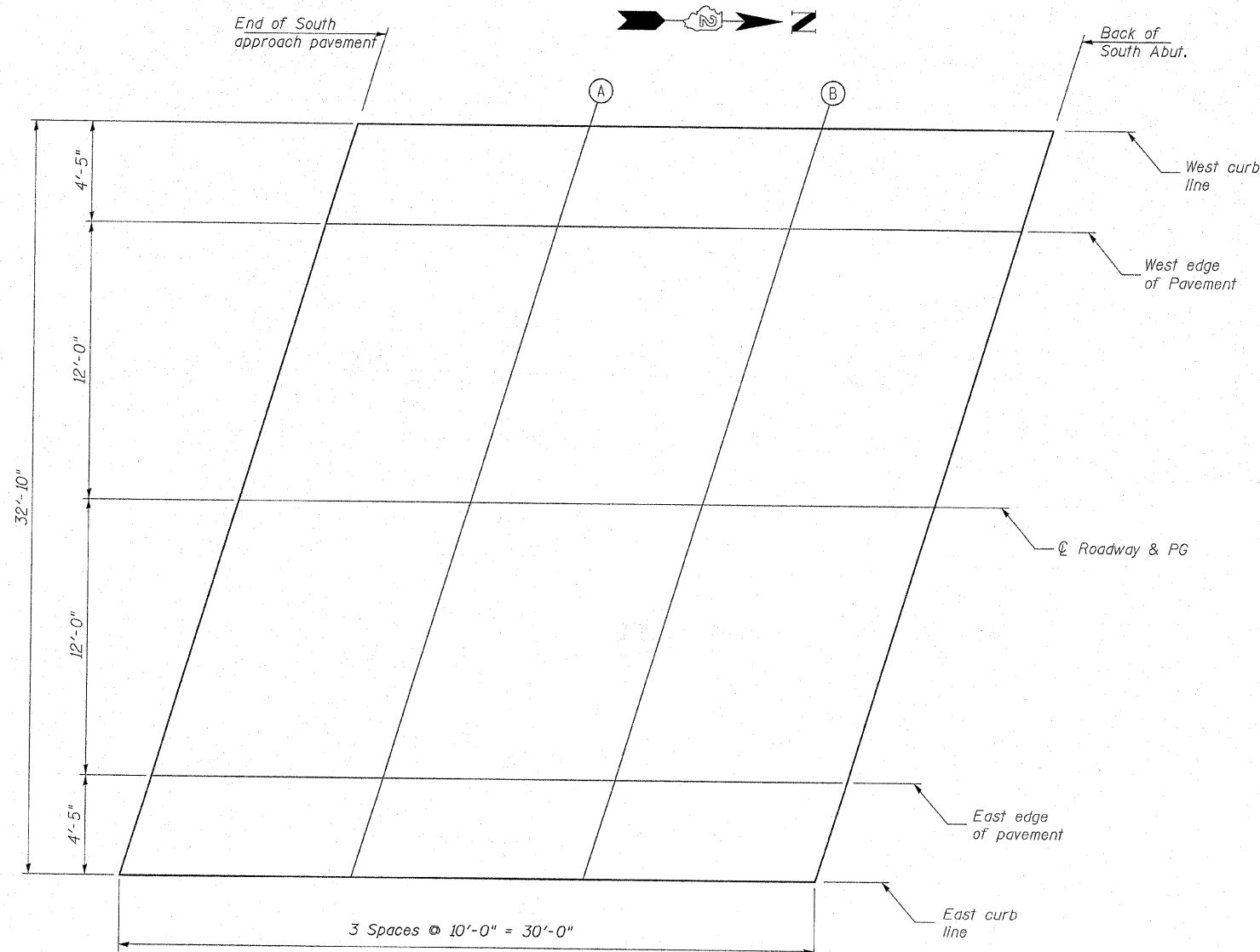
Location	Station	Offset	Theoretical Grade Elevations
End S. Appr. Pav't.	98+64.89	0.00	787.46
A	98+74.89	0.00	787.51
B	98+84.89	0.00	787.56
Bk. S. Abut.	98+94.89	0.00	787.61

EAST EDGE OF PAVEMENT

Location	Station	Offset	Theoretical Grade Elevations
End S. Appr. Pav't.	98+61.25	12.00	787.25
A	98+71.25	12.00	787.30
B	98+81.25	12.00	787.35
Bk. S. Abut.	98+91.25	12.00	787.40

EAST CURB LINE

Location	Station	Offset	Theoretical Grade Elevations
End S. Appr. Pav't.	98+59.91	16.42	787.15
A	98+69.91	16.42	787.20
B	98+79.91	16.42	787.25
Bk. S. Abut.	98+89.91	16.42	787.30



PLAN

DESIGNED	GUN / OAO
CHECKED	FCO
DRAWN	TCS / GUN
CHECKED	FCO

FOR INFORMATION ONLY

TOP OF SOUTH
APPROACH SLAB ELEVATIONS
MERIDIAN ROAD OVER US 20
F.A.P. 301 (US 20) - SEC. 1-HBR-2F
WINNEBAGO COUNTY
STATION 100+00
STRUCTURE NO. 101-0096