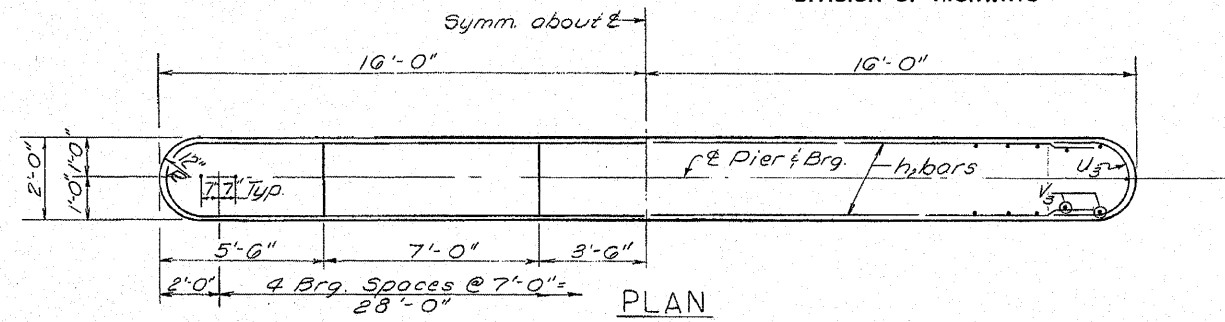


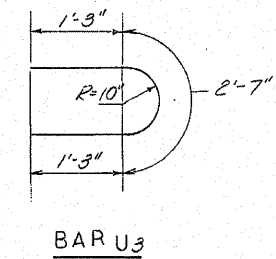
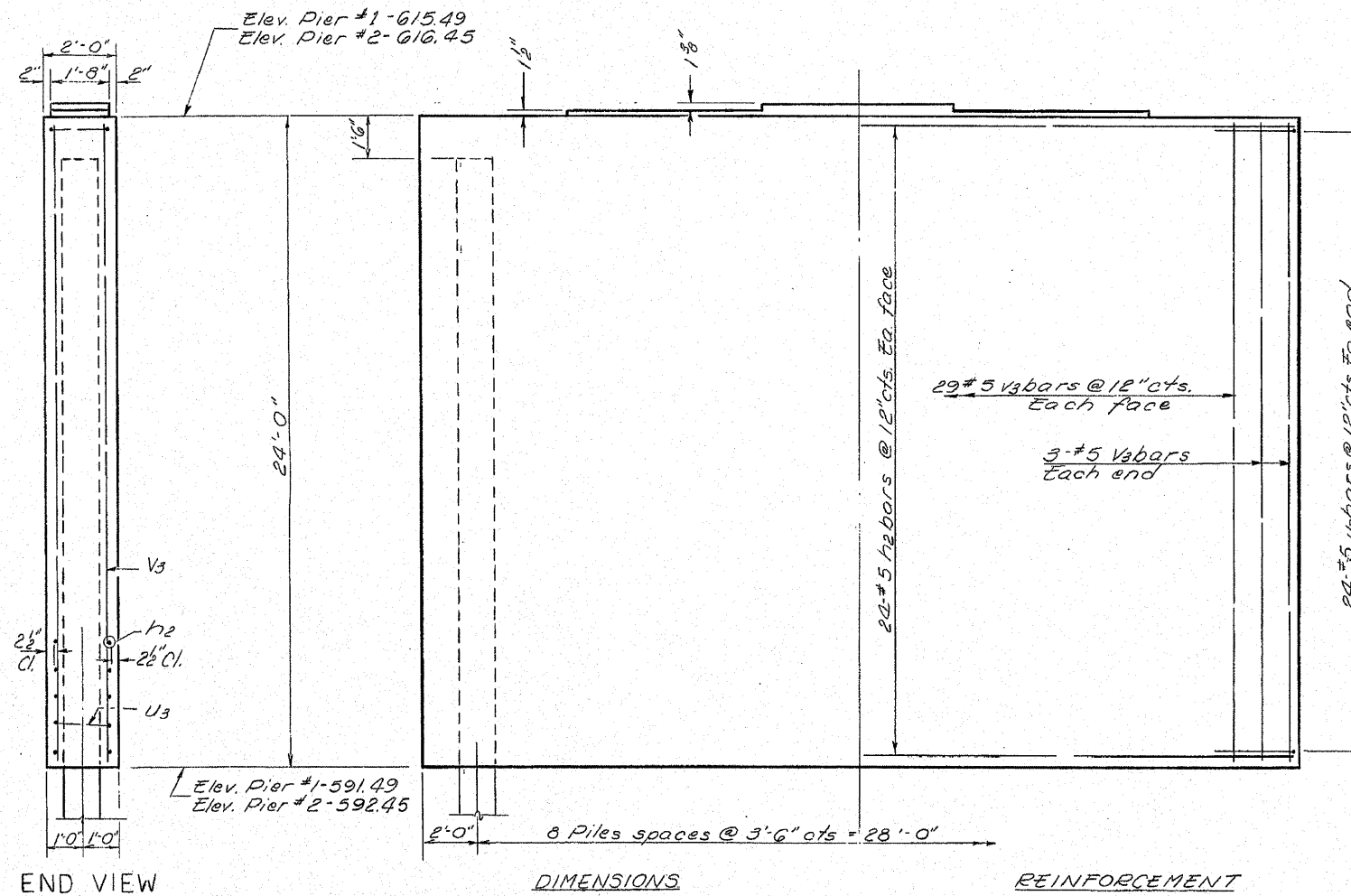
STATE OF ILLINOIS  
DEPARTMENT OF PUBLIC WORKS & BUILDINGS  
DIVISION OF HIGHWAYS

ROUTE NO.	SECTION	COUNTY	TOTAL SHEETS	SHEET NO.	SHEET NO. 7
A. B. 128	129B-1	Henry	38	19	10 SHEETS
FED. ROAD DIST. NO. 7	ILLINOIS	FED. AID PROJECT			



PILE DATA

Type: Concrete  
Capacity: 32 Tons.  
Est. Length: 50'-0"  
No. Req'd 17 plus one test pile



TWO PIERS  
BILL OF MATERIAL

Bar	No.	Size	Length	Shape
h <sub>2</sub>	96	#5	30'-0"	—
V <sub>3</sub>	128	#5	23'-9"	—
U <sub>3</sub>	96	#5	5'-1"	U
Class X Concrete			Cu. Yds.	1074
Reinforcement Bars			Lbs.	6,680
Concrete Piles			Lin. Ft.	850
Test Piles (Concrete)			Each	1

SHOWN FOR  
INFORMATION ONLY

PIERS  
S.B.I. RT.82 SEC.129 B-1  
HENRY COUNTY  
STA. 1285+20.76

DESIGNED	<i>Anthony</i>	EXAMINED	<i>May 17 1971</i>
CHECKED	R. F. ROCKEY	PASSED	
DRAWN	F. Mercado	APPROVED	
CHECKED	RFR		

Note: Vertical pier surfaces above Elev. 603.0 shall be sandblasted. (See Special Provisions)