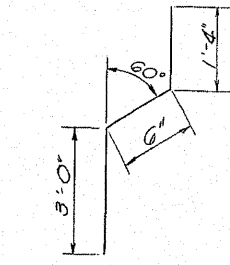
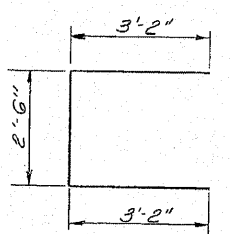


STATE OF ILLINOIS
DEPARTMENT OF PUBLIC WORKS & BUILDINGS
DIVISION OF HIGHWAYS

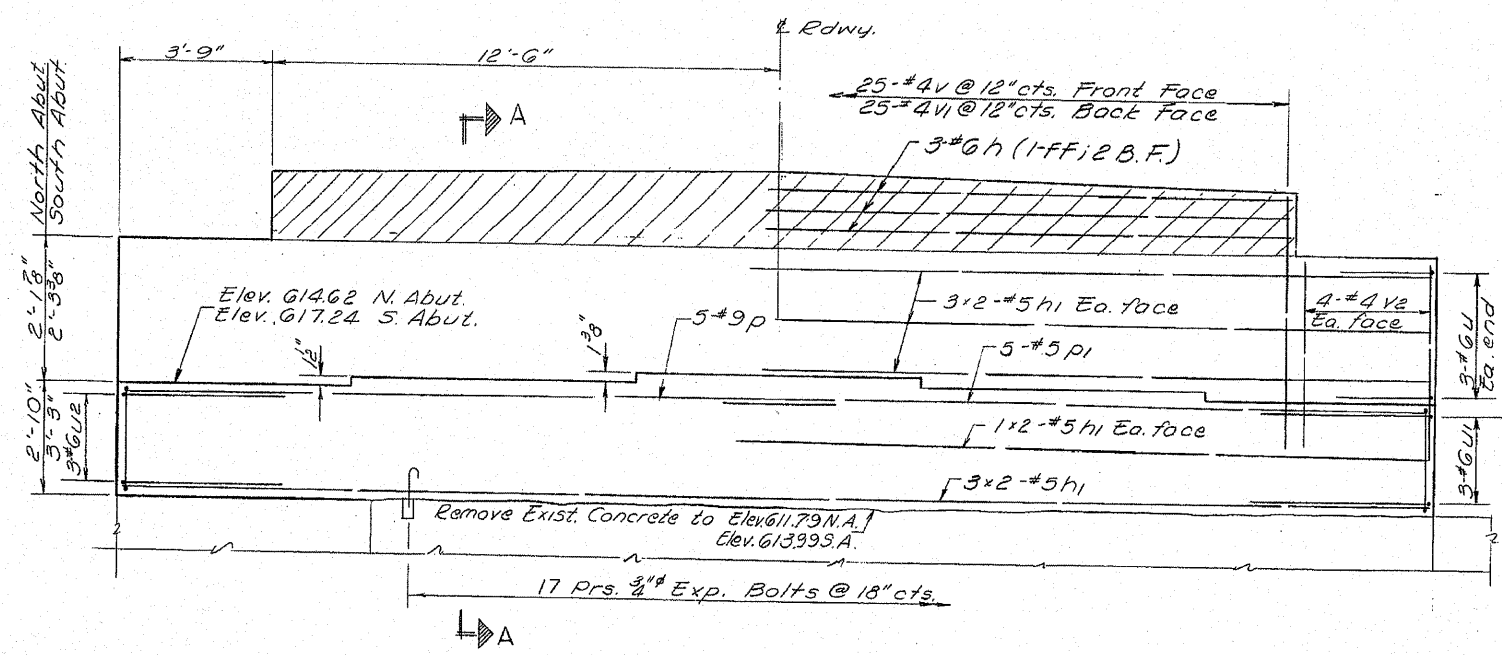
ROUTE NO.	SECTION	COUNTY	TOTAL SHEETS	SHEET NO.
S. I. 82	129B-1	Henry	38	18
SHEET NO. 6				
10 SHEETS				



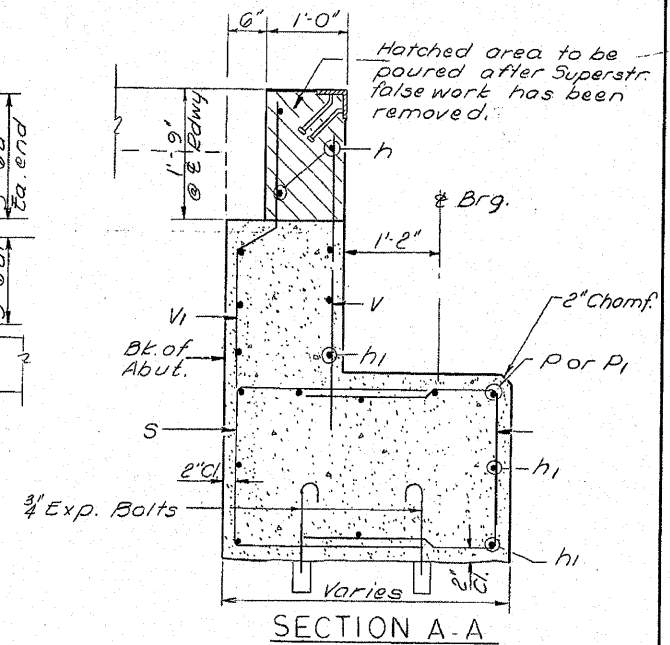
Bar VI



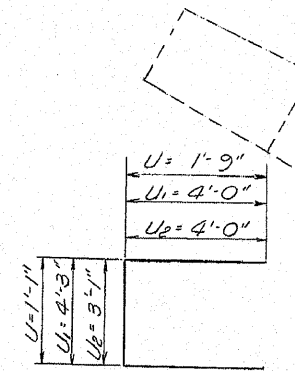
Bar S



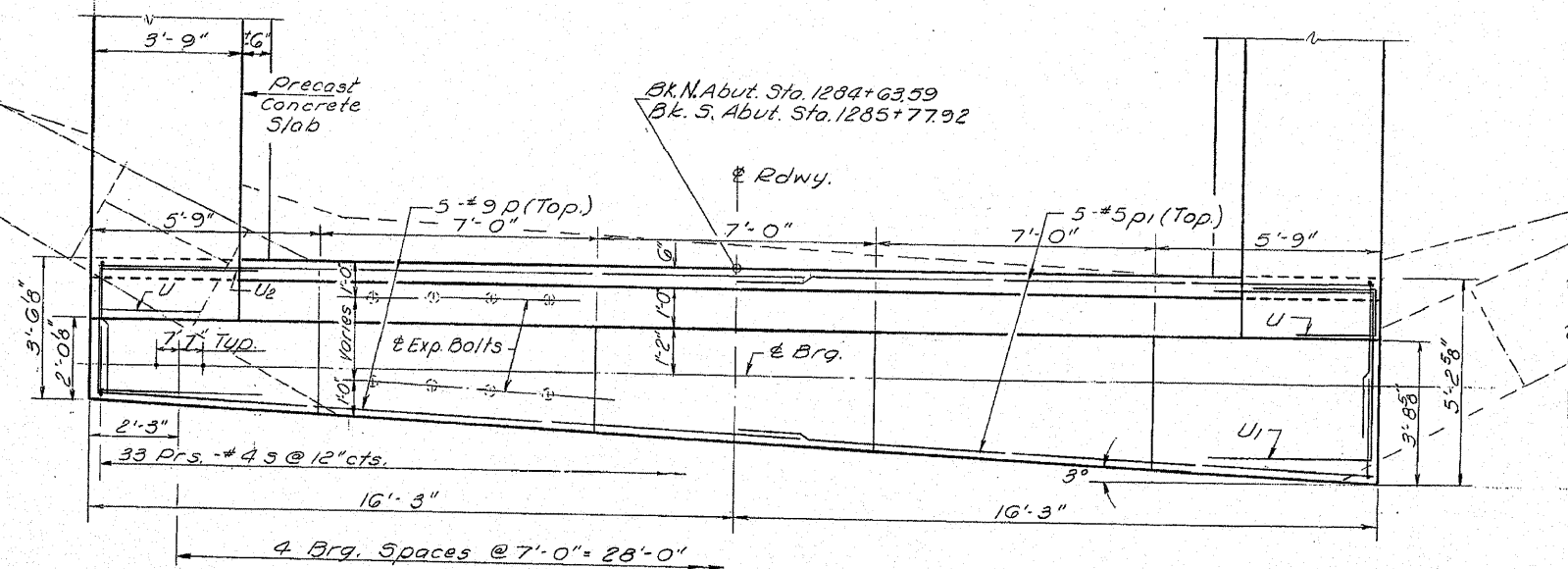
ELEVATION



SECTION A-A



Bars U, U1, U2



PLAN
NORTH ABUTMENT SHOWN

2 ABUTMENTS
BILL OF MATERIAL

Bar	No	Size	Length	Shape
h	6	#6	24'-9"	—
h1	44	#5	16'-9"	—
S	132	#4	8'-10"	—
U	12	#6	4'-7"	—
U1	6	#6	12'-3"	—
U2	6	#6	11'-1"	—
V	50	#4	4'-0"	—
V1	50	#4	4'-10"	—
V2	32	#4	3'-0"	—
P	10	#9	17'-0"	—
P1	10	#5	17'-0"	—
Class 1 Concrete				Cu. Yds. 40.7
Reinforcement Bars				Lbs. 3170
Expansion Bolts 3/4"				Each 68
Concrete Removal				Cu. Yds. 98

**SHOWN FOR
INFORMATION ONLY**

ABUTMENTS
S.B.I. RT. 82 SEC. 129 B-1
HENRY COUNTY
STA. 1285+20.76

DESIGNED <i>R. F. Rodley</i>	EXAMINED <i>May 17 1971</i>
CHECKED R. F. RODLEY	PASSED
DRAWN F. Merado	APPROVED
CHECKED R.F.R.	