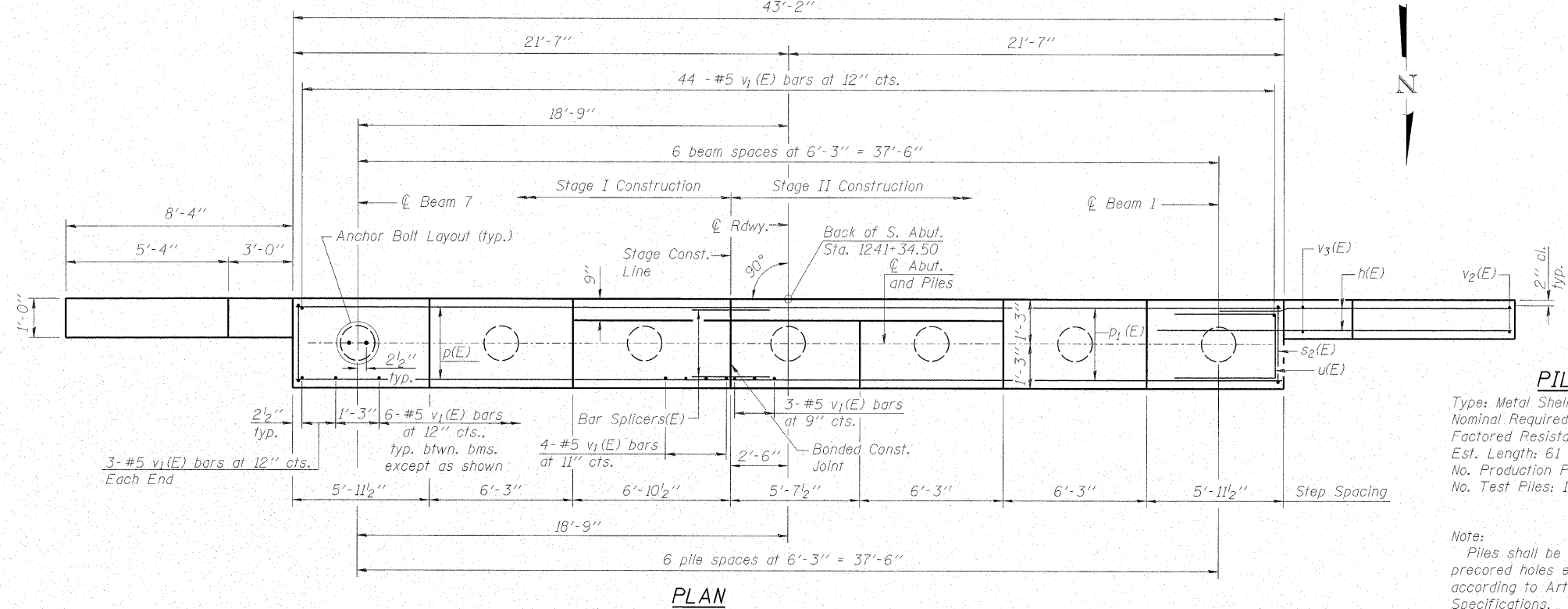
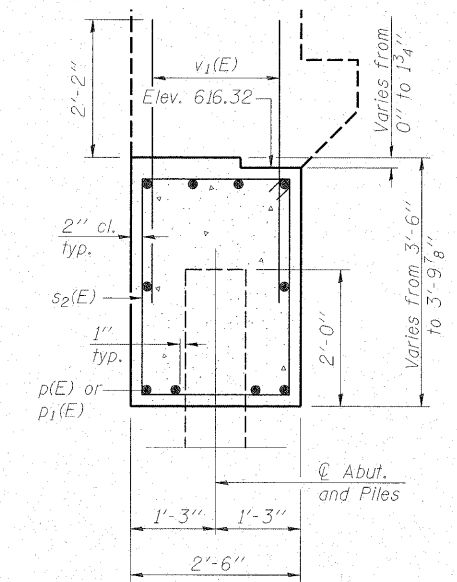
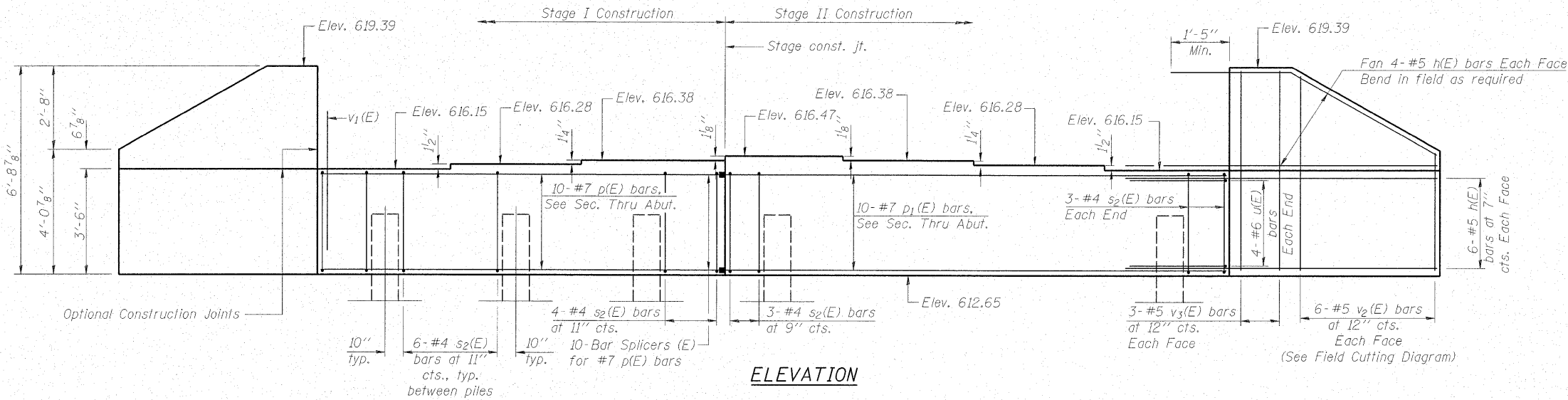


STATE OF ILLINOIS  
DEPARTMENT OF TRANSPORTATION

Notes: Four steps monolithically with cap.  
Space reinforcement to miss anchor bolts.



**PILE DATA**

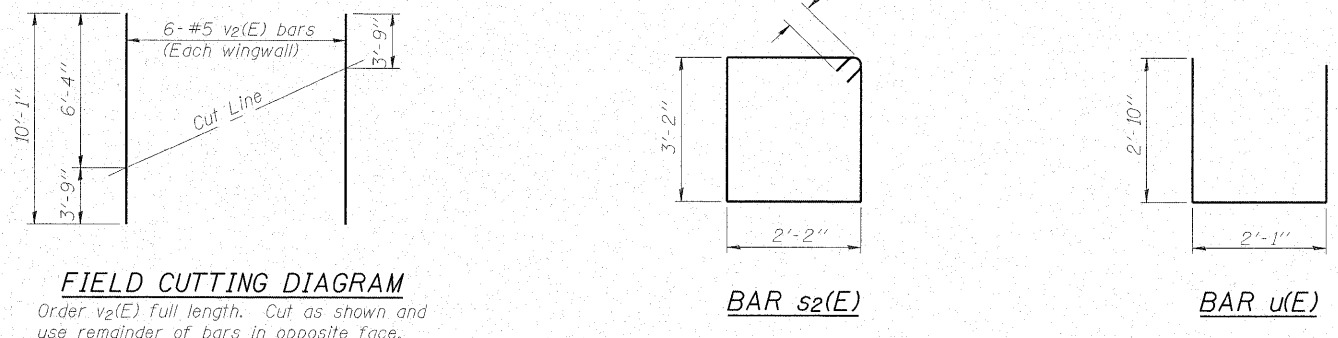
Type: Metal Shell 14 in. dia. x 0.312 in. walls w/ pile shoes  
Nominal Required Bearing: 469 kips  
Factored Resistance Available: 137 kips  
Est. Length: 61 feet  
No. Production Piles: 6  
No. Test Piles: 1

Note:  
Piles shall be driven through 20 in. diameter precored holes extending to elevation 596.0 according to Article 512.09(c) of the Standard Specifications. Cost included in Driving Piles.  
Extents of existing concrete abutment below ground are not known. Precored holes may encounter concrete footing near the bottom of precoring. Contractor shall provide necessary equipment to extend hole through concrete if found. No additional payment will be made for coring through concrete.

**BILL OF MATERIAL**

Bar	No.	Size	Length	Shape
h(E)	40	#5	10'-3"	—
p(E)	10	#7	18'-9"	—
p <sub>1</sub> (E)	10	#7	23'-9"	—
s <sub>2</sub> (E)	43	#4	11'-5"	□
u(E)	8	#6	7'-9"	—
v <sub>1</sub> (E)	87	#5	4'-4"	—
v <sub>2</sub> (E)	12	#5	10'-1"	—
v <sub>3</sub> (E)	12	#5	6'-4"	—
Structure Excavation	Cu. Yd.	11		
Concrete Structures	Cu. Yd.	17.6		
Reinforcement Bars, Epoxy Coated	Pound	2320		
Furnishing Metal Shell Piles, 14"x0.312"	Foot	366		
Driving Piles	Foot	366		
Test Pile, Metal Shells	Each	1		
Pile Shoes	Each	7		
Anchor Bolts, 1"	Each	14		

For details of Bar Splicers, see sheet 21 of 24.  
For details of piles, see sheet 20 of 24.



**MAURER STUTZ, INC.**  
ENGINEERS SURVEYORS

DESIGNED - BAS  
CHECKED - KEF  
DRAWN - SGM  
CHECKED - RJA/KEF

**SOUTH ABUTMENT  
STRUCTURE NO. 037-0175**

SHEET NO. 16	F.A.P. RTE. 638	SECTION 129 BR-3	COUNTY HENRY	TOTAL SHEETS 73	SHEET NO. 33
24 SHEETS		CONTRACT NO. 64B08			
FED. ROAD DIST. NO. ILLINOIS FED. AID PROJECT					