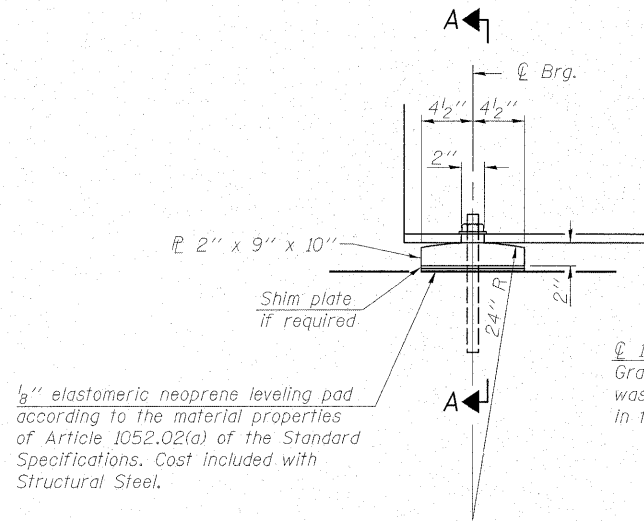


STATE OF ILLINOIS
DEPARTMENT OF TRANSPORTATION



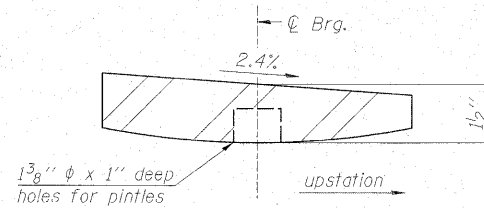
1/2" elastomeric neoprene leveling pad according to the material properties of Article 1052.02(a) of the Standard Specifications. Cost included with Structural Steel.

1" ϕ x 12" anchor bolts (ASTM F1554 Grade 36) with 2 1/4" x 2 1/4" x 5/16" \mathbb{P} washer under nut. 1 3/8" x 2" slotted hole in flange. 1 1/2" ϕ holes in bearing plate.

SECTION A-A

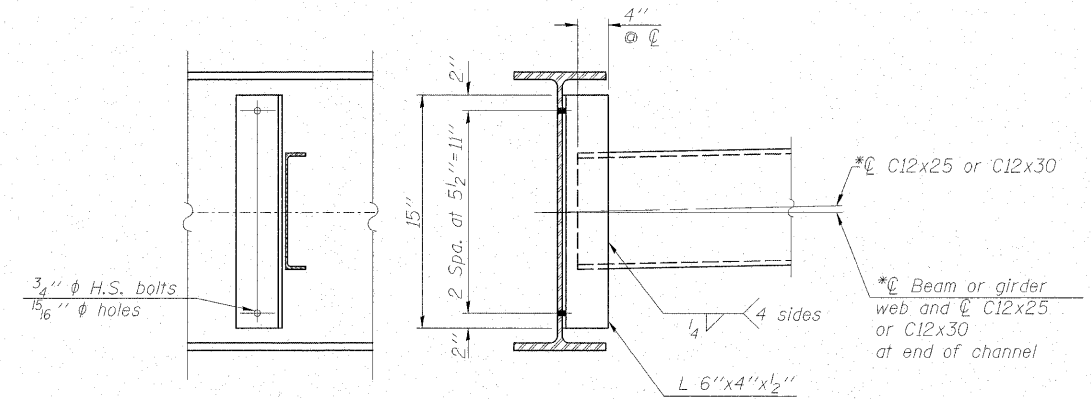
ELEVATION AT ABUTMENT

FIXED BEARING AT ABUTMENTS



1 3/8" ϕ x 1" deep holes for pintles

TOP \mathbb{P} TAPER DETAIL

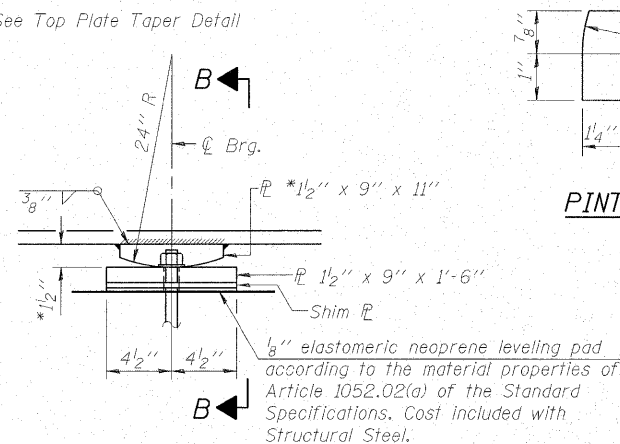


DIAPHRAGM D

Note:
Two hardened washers required for each set of oversized holes.

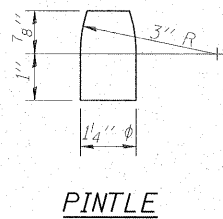
*Alternate channels are permitted to facilitate material acquisition. Calculated weight of structural steel is based on the lighter section. The alternate, if utilized, shall be provided at no additional cost to the Department.

* See Top Plate Taper Detail

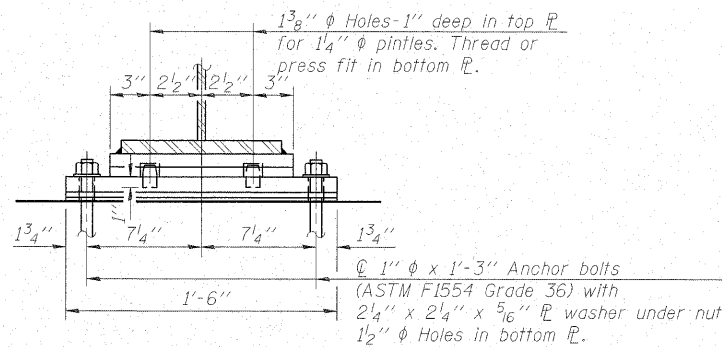


ELEVATION AT PIER

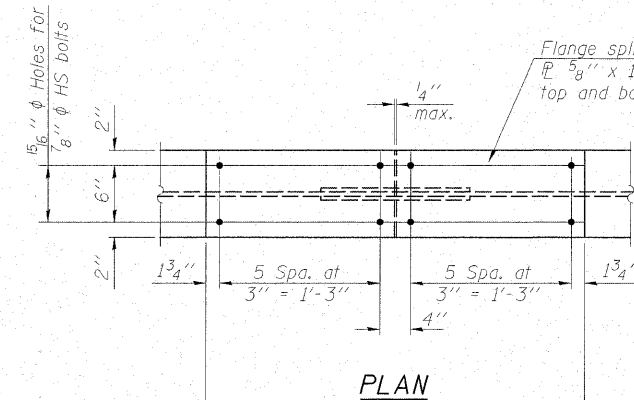
FIXED BEARING AT PIERS



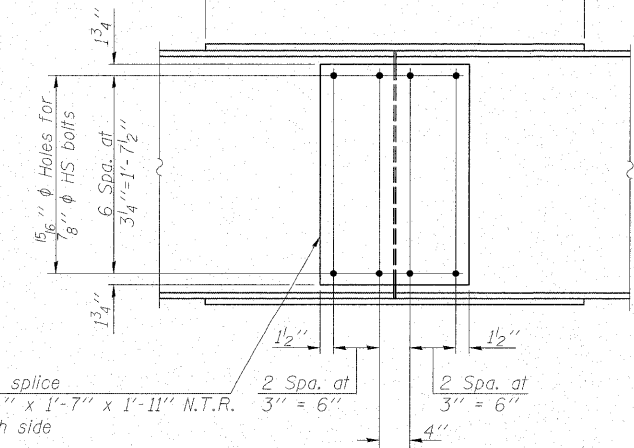
PINTLE



SECTION B-B



PLAN



ELEVATION

SPLICE DETAIL
(7 Required)

Notes:
All splice plate material shall be AASHTO M270 Gr. 50.
Load carrying components designated "NTR" shall conform to the Supplemental Provisions for Notch Toughness, Zone 2.

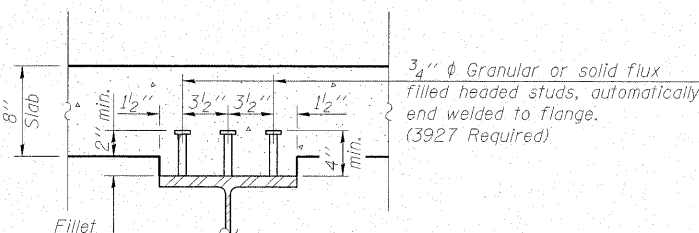
Notes:

Anchor bolts shall be ASTM F1554 all-thread (or an Engineer-approved alternate material) of the grade(s) and diameter(s) specified. ASTM A307 Grade C anchor bolts may be used in lieu of ASTM F1554 Grade 36 (Fy=36ksi). The corresponding specified grade of AASHTO M314 anchor bolts may be used in lieu of ASTM F1554.

Anchor bolts at fixed bearings may be either cast in place or installed in holes drilled after the supported member is in place.
Drilled and set anchor bolts shall be installed according to Article 521.06 of the Standard Specifications.

All bearing plates, pintles, and shim plates shall conform to AASHTO M270 Gr. 50.

Two 1/2" adjusting shims shall be provided for each bearing in addition to all other plates or shims and placed as shown on bearing details.



SECTION C-C

3/4" ϕ Granular or solid flux filled headed studs, automatically end welded to flange. (3927 Required)



DESIGNED -	BAS
CHECKED -	KEF
DRAWN -	SGM
CHECKED -	RJA/KEF

STRUCTURAL STEEL DETAILS
STRUCTURE NO. 037-0175

SHEET NO. 15 24 SHEETS	F.A.P. RTE. 638	SECTION 129 BR-3	COUNTY HENRY	TOTAL SHEETS 73	SHEET NO. 32
	CONTRACT NO. 64B08				
FED. ROAD DIST. NO. ILLINOIS FED. AID PROJECT					