

STATE OF ILLINOIS
DEPARTMENT OF TRANSPORTATION

GENERAL NOTES

Fasteners shall be AASHTO M164 Type 1, mechanically galvanized bolts. Bolts $\frac{7}{8}$ in. ϕ , holes $\frac{15}{16}$ in. ϕ , unless otherwise noted.

Calculated weight of Structural Steel = 77080 lbs. (AASHTO M270 Gr. 50)
6350 lbs. (AASHTO M270 Gr. 36)

No field welding is permitted except as specified in the contract documents.

Reinforcement bars shall conform to the requirements of ASTM A 706 Gr 60. See Special Provisions.

Reinforcement bars designated (E) shall be epoxy coated.

Bearing seat surfaces shall be constructed or adjusted to their designated elevations within a tolerance of $\frac{1}{8}$ inch (0.01 ft.). Adjustment shall be made either by grinding the surface or by shiming the bearings.

The existing structural steel coating contains lead. The Contractor shall take appropriate precautions to deal with the presence of lead on this project.

The Inorganic Zinc Rich Primer / Acrylic / Acrylic Paint System shall be used for shop and field painting of new structural steel except where otherwise noted. The color of the final finish coat for all interior steel surfaces shall be gray, Munsell No. 5B 7/1. The color of the final finish coat for the exterior and bottom flange of the fascia beams shall be Reddish Brown, Munsell No. 2.5YR 3/4. See Special Provision for "Cleaning and Painting New Metal Structures".

Layout of slope protection system may be varied in the field to suit ground conditions as directed by the Engineer.

The embankment configuration shown shall be the minimum that must be placed and compacted prior to construction of the abutments.

The Contractor shall drive test piles to 110% of the nominal required bearing specified in production locations at substructures specified or approved by the Engineer before ordering the remainder of piles.

The Contractor shall obtain a construction permit from the Illinois Department of Natural Resources (IDNR), Office of Water Resources for any temporary construction activity placed in the water except cofferdams. This shall include the placement of material for run-arounds, causeways, etc. Any permit application by the Contractor shall refer to the IDNR permit number as shown in the contract plans.

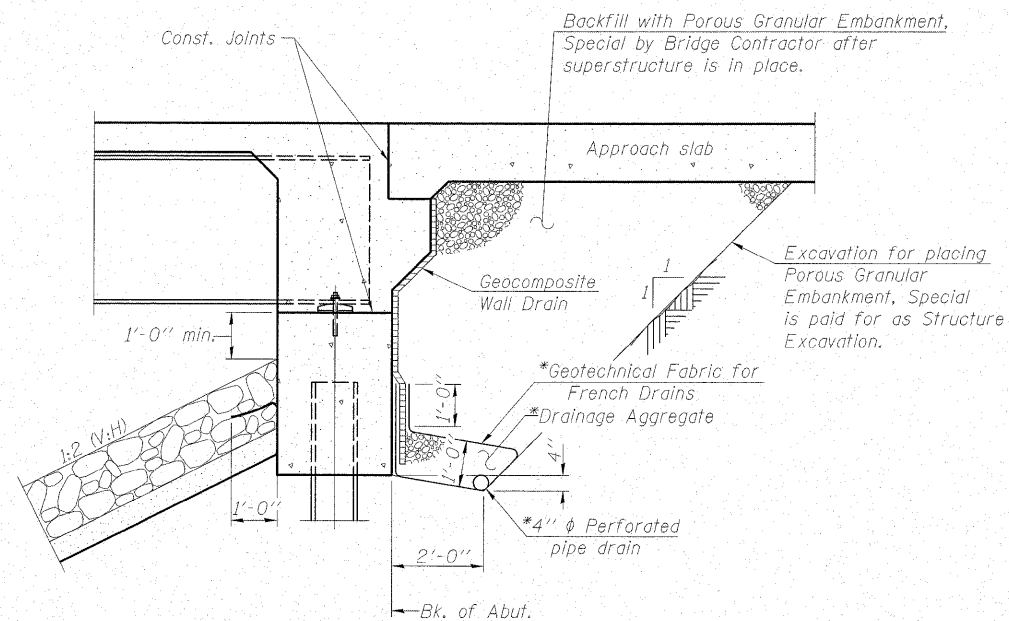
Slipforming of the parapets is not allowed.

Self-consolidating concrete shall be used for all concrete components utilizing Form Liner Textured Surface. See Special Provisions.

The SSPC QP-1 contractor certification will be required for this contract.

TOTAL BILL OF MATERIAL

ITEM	UNIT	SUPER	SUB	TOTAL
Porous Granular Embankment, Special	Cu. Yd.		91	91
Stone Riprap, Class A4	Sq. Yd.		976	976
Stone Riprap, Class A4 (Special)	Sq. Yd.		366	366
Filter Fabric	Sq. Yd.		976	976
Removal of Existing Structures	Each			1
Protective Shield	Sq. Yd.	394		394
Structure Excavation	Cu. Yd.		191	191
Concrete Structures	Cu. Yd.		213.3	213.3
Concrete Superstructure	Cu. Yd.	323.5		323.5
Bridge Deck Grooving	Sq. Yd.	784		784
Concrete Encasement	Cu. Yd.		6.0	6.0
Form Liner Textured Surface	Sq. Ft.	846	3135	3981
Protective Coat	Sq. Yd.	960		960
Furnishing and Erecting Structural Steel	L. Sum	1		1
Stud Shear Connectors	Each	3927		3927
Reinforcement Bars, Epoxy Coated	Pound	74480	18570	93050
Bar Splicers	Each	621	190	811
Furnishing Metal Shell Piles 14" x 0.312"	Foot		1350	1350
Driving Piles	Foot		1350	1350
Test Pile Metal Shells	Each		4	4
Pile Shoes	Each		28	28
Temporary Sheet Piling	Sq. Ft.		461	461
Name Plates	Each	1		1
Anchor Bolts, 1"	Each		56	56
Geocomposite Wall Drain	Sq. Yd.		65	65
Pipe Underdrains for Structures 4"	Foot		152	152
Temporary Soil Retention System	Sq. Ft.		133	133
Underwater Structure Excavation Protection, Location 1	Each		1	1
Underwater Structure Excavation Protection, Location 2	Each		1	1



SECTION THRU INTEGRAL ABUTMENT

*Included in the cost of Pipe Underdrains for Structures.

Note:
All drainage system components shall extend to 2'-0" from the end of each wingwall except an outlet pipe shall extend until intersecting with the side slopes. The pipes shall drain into concrete headwalls. (See Article 601.05 of the Standard Specifications and Highway Standard 601101).



DESIGNED - BAS
CHECKED - KEF
DRAWN - SGM
CHECKED - RJA/KEF

**GENERAL DATA
STRUCTURE NO. 037-0175**

SHEET NO. 2 24 SHEETS	F.A.P. RTE.	SECTION	COUNTY	TOTAL SHEETS	SHEET NO.
		129 BR-3	HENRY	73	19
CONTRACT NO. 64B08					
FED. ROAD DIST. NO. ILLINOIS FED. AID PROJECT					