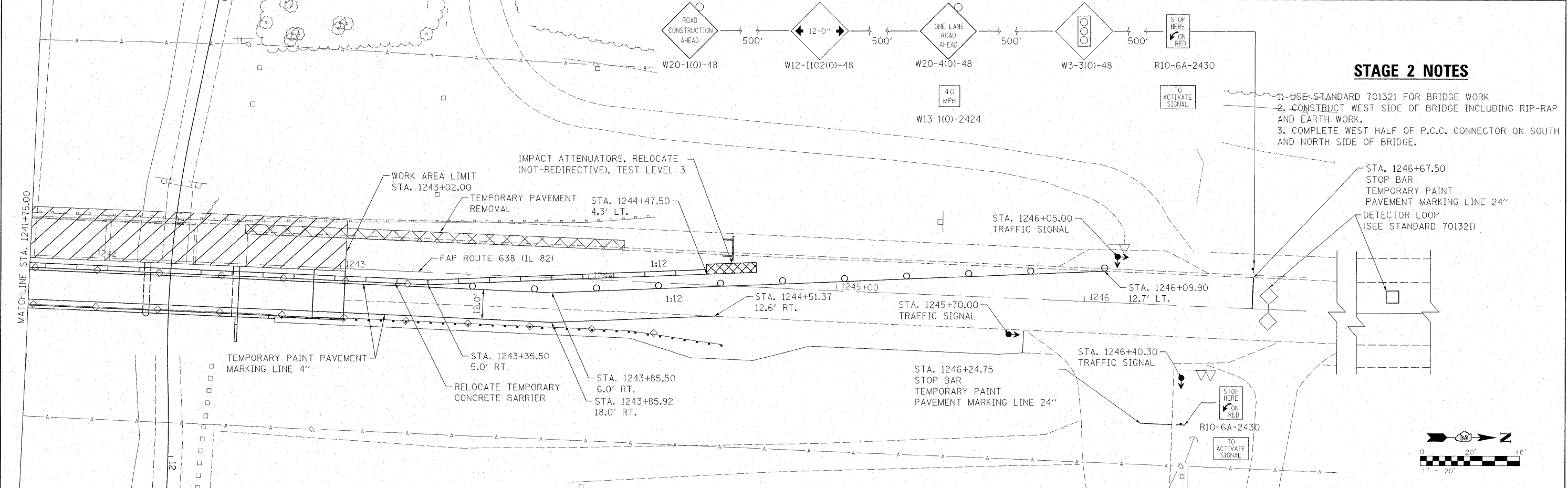
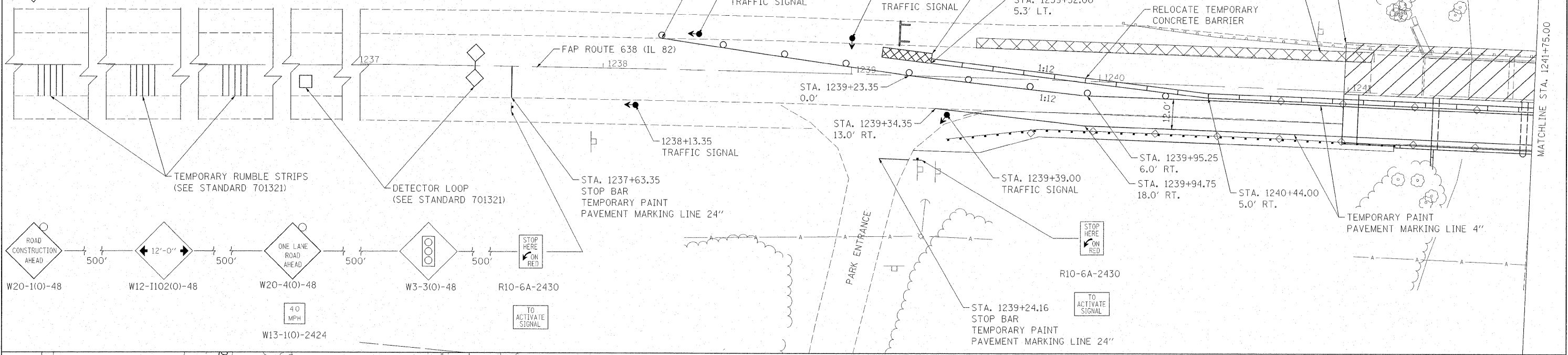


**STAGING LEGEND**

- TEMPORARY RUMBLE STRIPS
- TYPE III BARRICADE WITH FLASHING LIGHTS
- TEMPORARY CONCRETE BARRIER
- DRUM WITH STEADY BURNING LIGHTS
- DETECTOR LOOPS
- WORK ZONE
- TRAFFIC SIGNAL
- SIGN
- GUARDRAIL MARKERS
- TEMPORARY SHOULDER REMOVAL

**STAGE 2**



**STAGE 2 NOTES**

1. USE STANDARD 701321 FOR BRIDGE WORK
2. CONSTRUCT WEST SIDE OF BRIDGE INCLUDING RIP-RAP AND EARTH WORK.
3. COMPLETE WEST HALF OF P.C.C. CONNECTOR ON SOUTH AND NORTH SIDE OF BRIDGE.



FILE NAME = #FILEL#	USER NAME = #USER#	DESIGNED - JDS	REVISED -	<b>STATE OF ILLINOIS DEPARTMENT OF TRANSPORTATION</b>	<b>IL 82 OVER HENNEPIN CANAL STAGING PLAN - STAGE 2 CONSTRUCTION</b>			F.A.P. RTE. 638	SECTION 129BR-3	COUNTY HENRY	TOTAL SHEETS 73	SHEET NO. 17
PLOT SCALE = #SCALE#	PLCT DATE = #DATE#	DRAWN - WLL	REVISED -		SCALE: 1"=20'	SHEET NO.	OF SHEETS	STA.	TO STA.	CONTRACT NO. 64B08		
		CHECKED - RJA	REVISED -							ILLINOIS FED. AID PROJECT		
		DATE -	REVISED -									