

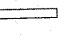
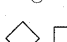

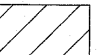
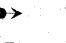


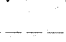
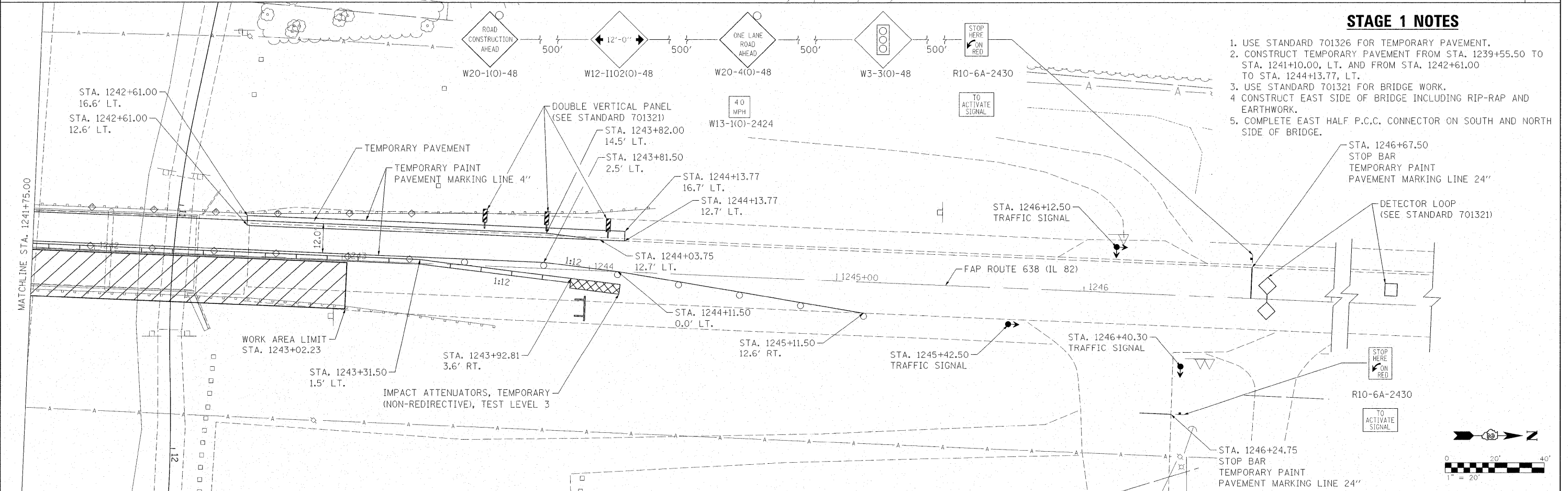
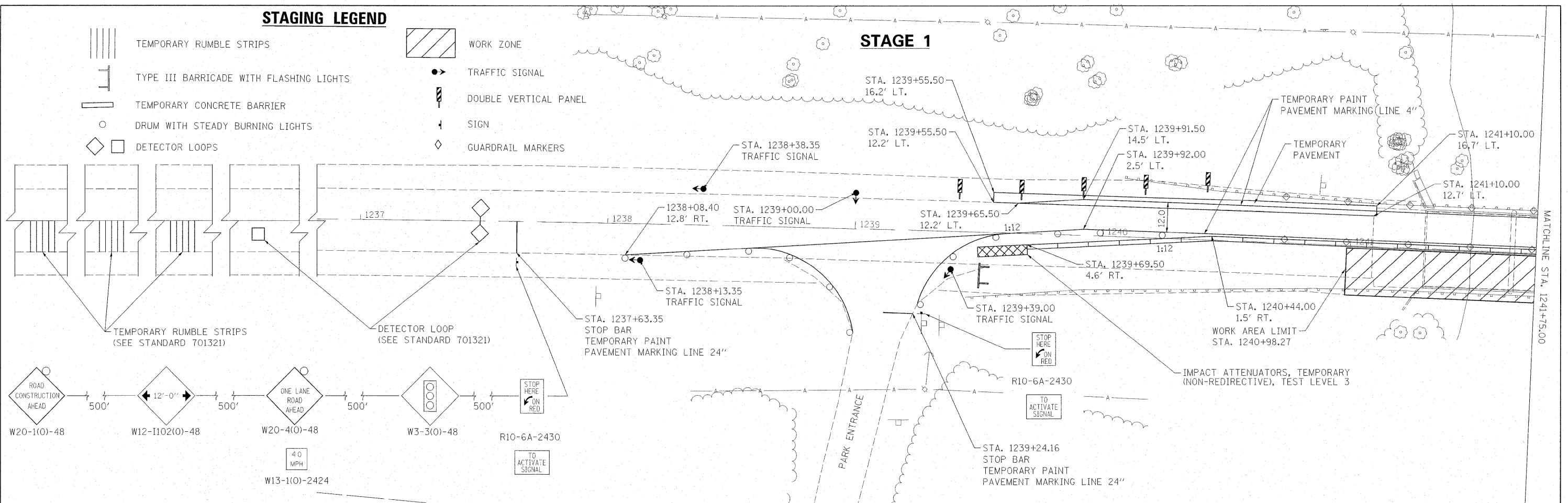


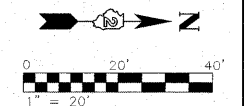
STAGING LEGEND

-  TEMPORARY RUMBLE STRIPS
-  TYPE III BARRICADE WITH FLASHING LIGHTS
-  TEMPORARY CONCRETE BARRIER
-  DRUM WITH STEADY BURNING LIGHTS
-  DETECTOR LOOPS
-  WORK ZONE
-  TRAFFIC SIGNAL
-  DOUBLE VERTICAL PANEL
-  SIGN
-  GUARDRAIL MARKERS



STAGE 1 NOTES

1. USE STANDARD 701326 FOR TEMPORARY PAVEMENT.
2. CONSTRUCT TEMPORARY PAVEMENT FROM STA. 1239+55.50 TO STA. 1241+10.00, LT. AND FROM STA. 1242+61.00 TO STA. 1244+13.77, LT.
3. USE STANDARD 701321 FOR BRIDGE WORK.
4. CONSTRUCT EAST SIDE OF BRIDGE INCLUDING RIP-RAP AND EARTHWORK.
5. COMPLETE EAST HALF P.C.C. CONNECTOR ON SOUTH AND NORTH SIDE OF BRIDGE.



FILE NAME = #FILE#	USER NAME = #USER#	DESIGNED - JDS	REVISED -	STATE OF ILLINOIS DEPARTMENT OF TRANSPORTATION		IL 82 OVER HENNEPIN CANAL STAGING PLAN - STAGE 1 CONSTRUCTION		F.A.P. RTE. 638	SECTION 129BR-3	COUNTY HENRY	TOTAL SHEETS 73	SHEET NO. 16
PLOT SCALE = #SCALE#		CHECKED - RJA		SCALE: 1"=20'		SHEET NO. OF SHEETS STA. TO STA.		CONTRACT NO. 64B08				
PLOT DATE = #DATE#		DATE						FED. ROAD DIST. NO. [ILLINOIS] FED. AID PROJECT				