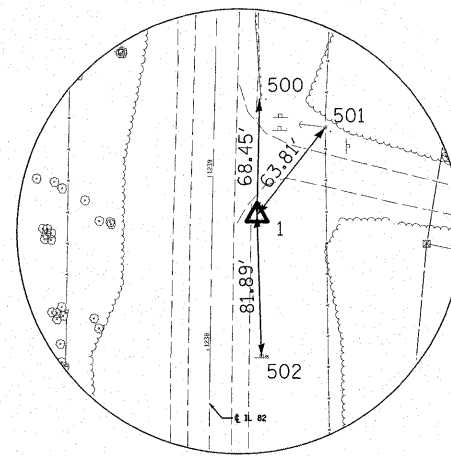


HORIZONTAL & VERTICAL CONTROL

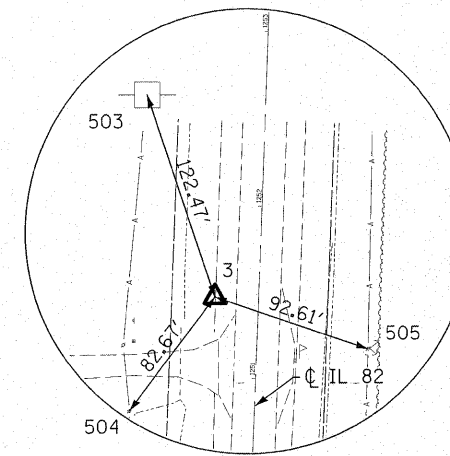
HORIZONTAL CONTROL POINTS							
POINT	NORTH	EAST	ELEVATION	CHAIN	STATION	OFFSET	DESCRIPTION
1	1753662.1420	2298886.2200	624.4690	IL82	1238+78.6461	25.7742' RT	GPS CONTROL POINT, ROD W/CAP
3	1754930.8360	2298879.7430	599.6080	IL82	1251+46.7368	25.0744' LT	GPS CONTROL POINT, ROD W/CAP

SURVEY WORK POINTS							
POINT	NORTH	EAST	ELEVATION	CHAIN	STATION	OFFSET	DESCRIPTION
103	1754007.0237	2298982.1837	603.5280	IL82	1242+27.2709	110.9610' RT	TOPO SURVEY POINT, 5/8" Ø REBAR
104	1754023.3950	2298790.9344	603.6030	IL82	1242+36.6624	80.7578' LT	TOPO SURVEY POINT, 5/8" Ø REBAR

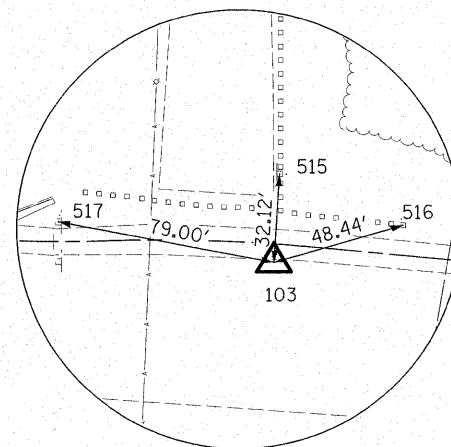
REFERENCE TIES				
POINT	CHAIN	STATION	OFFSET	DESCRIPTION
500	IL82	1239+47.2484	25.7424' RT	GUARDPOST
501	IL82	1239+29.6963	64.3248' RT	POWER POLE
502	IL82	1237+96.6006	28.3775' RT	SIGN
503	IL82	1252+61.3100	68.3481' LT	POWER POLE
504	IL82	1250+78.8601	72.2674' LT	POWER POLE
505	IL82	1251+20.3804	63.7069' RT	POWER POLE
512	IL82	1242+41.3006	31.4284' LT	SIGN
513	IL82	1242+61.7357	64.9622' LT	GUARDPOST
514	IL82	1242+58.9473	88.7593' LT	POWER POLE
515	IL82	1242+59.3790	111.8651' RT	SIGN
516	IL82	1242+42.4099	156.9751' RT	GUARDPOST
517	IL82	1242+38.8954	32.8114' RT	SIGN



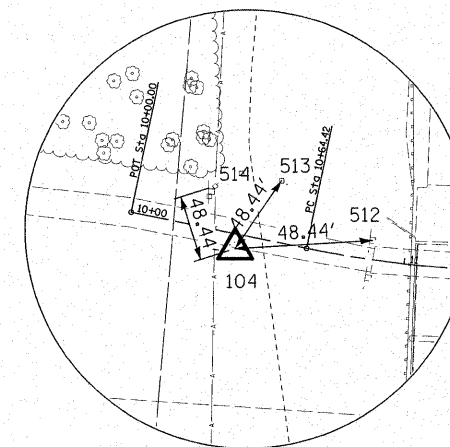
HORIZONTAL CONTROL POINT NO. 1



HORIZONTAL CONTROL POINT NO. 3



SURVEY WORK POINT NO. 103



SURVEY WORK POINT NO. 104

