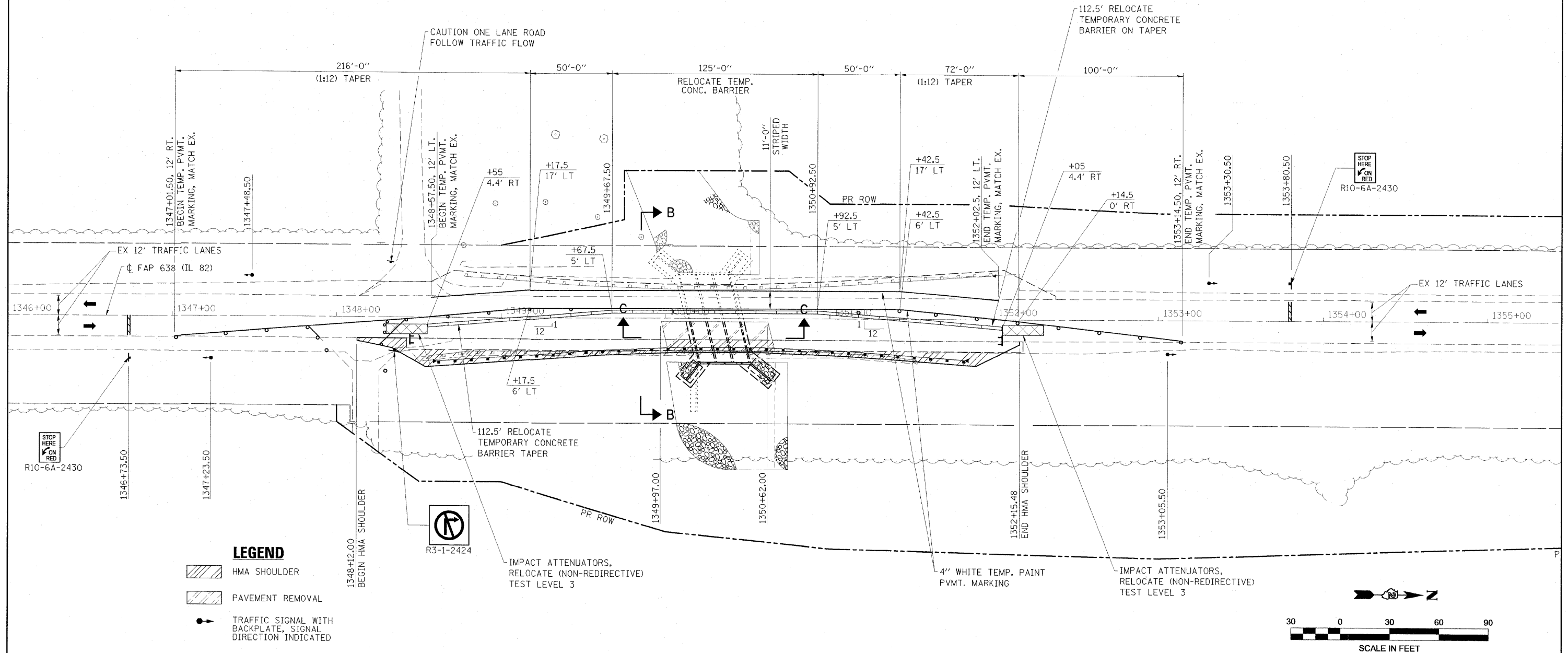


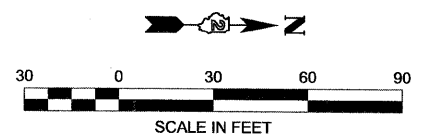
GENERAL NOTES

1. TRAFFIC CONTROL SHALL BE ERECTED AS SHOWN AND ACCORDING TO "TRAFFIC CONTROL AND PROTECTION, STANDARD 701321."
2. SEE SPECIAL PROVISIONS FOR ADDITIONAL TRAFFIC CONTROL REQUIREMENTS.
3. COORDINATE LOCATION OF SIGNALS WITH FINAL WORK AS DIRECTED BY THE ENGINEER.
4. ADDITIONAL SIGNAGE AND BARRICADES SHOWN FOR SIDE-ROADS AND ENTRANCES SHALL BE INCLUDED IN THE COST OF STANDARD 701321.
5. THE DIMENSION SHOWN ON THE WIDTH RESTRICTION SIGN SHOWN ON STANDARD 701321 SHALL BE 10'-6". THE SIGN SHALL FOLLOW DISTRICT STANDARD 39.2.



LEGEND

- HMA SHOULDER
- PAVEMENT REMOVAL
- TRAFFIC SIGNAL WITH BACKPLATE, SIGNAL DIRECTION INDICATED



FILE NAME = D:\254A04-sht-staging\02.dgn	USER NAME = HAS	DESIGNED - JMS	REVISED -	STATE OF ILLINOIS DEPARTMENT OF TRANSPORTATION	STAGE II CONSTRUCTION	F.A.P. RTE. 638	SECTION 129BR	COUNTY HENRY	TOTAL SHEETS 42	SHEET NO. 14		
PLLOT SCALE = 1/8" = 30' / IN.	CHECKED - ELH	REVISIED -	REVISIED -			SCALE: 1"=30'-0"	SHEET NO. 1 OF 1 SHEETS	STA. 1342+25	TO STA. 1358+00	CONTRACT NO. 64A04		
PLLOT DATE = 9/9/2009 9:51:19 AM	DATE - 09/08/09	REVISIED -	REVISIED -			FED. ROAD DIST. NO. ILLINOIS PROJECT						