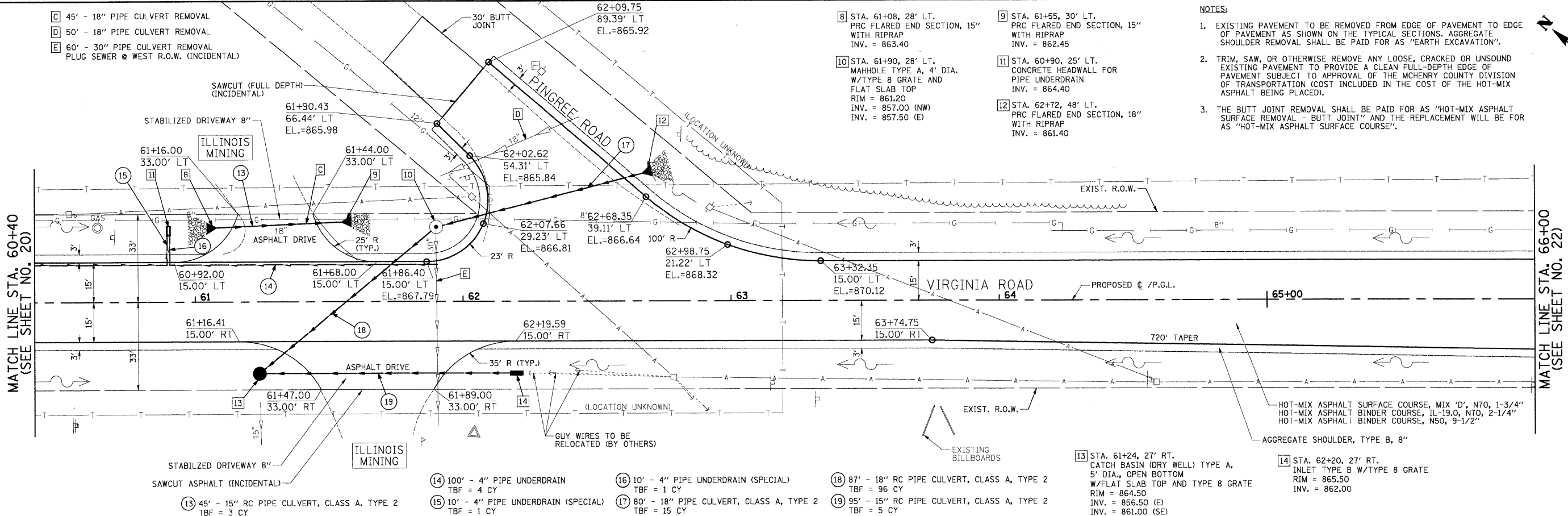


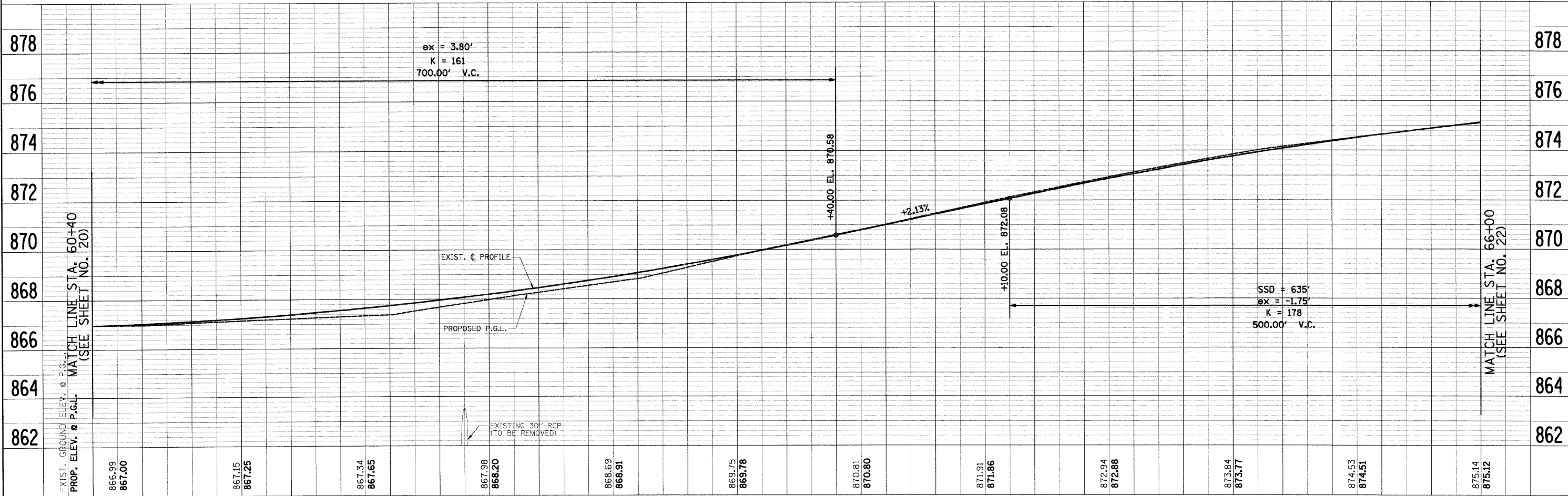
PLAN	SURVEYED	BY	DATE
	PLANNED		
	NOTED		
	REVISION		
	NO. OF WAY CHECKED		
	NO. OF FILE NAME		

PROFILE	SURVEYED	BY	DATE
	PLANNED		
	NOTED		
	REVISION		
	NO. OF WAY CHECKED		
	NO. OF FILE NAME		



- NOTES:**
- EXISTING PAVEMENT TO BE REMOVED FROM EDGE OF PAVEMENT TO EDGE OF PAVEMENT AS SHOWN ON THE TYPICAL SECTIONS. AGGREGATE SHOULDER REMOVAL SHALL BE PAID FOR AS "EARTH EXCAVATION".
 - TRIM, SAW, OR OTHERWISE REMOVE ANY LOOSE, CRACKED OR UNSOUND EXISTING PAVEMENT TO PROVIDE A CLEAN FULL-DEPTH EDGE OF PAVEMENT SUBJECT TO APPROVAL OF THE MCHENRY COUNTY DIVISION OF TRANSPORTATION (COST INCLUDED IN THE COST OF THE HOT-MIX ASPHALT BEING PLACED).
 - THE BUTT JOINT REMOVAL SHALL BE PAID FOR AS "HOT-MIX ASPHALT SURFACE REMOVAL - BUTT JOINT" AND THE REPLACEMENT WILL BE FOR AS "HOT-MIX ASPHALT SURFACE COURSE".

- 13 45' - 15" RC PIPE CULVERT, CLASS A, TYPE 2
TBF = 3 CY
- 14 100' - 4" PIPE UNDERDRAIN
TBF = 4 CY
- 15 10' - 4" PIPE UNDERDRAIN (SPECIAL)
TBF = 1 CY
- 16 10' - 4" PIPE UNDERDRAIN (SPECIAL)
TBF = 1 CY
- 17 80' - 18" PIPE CULVERT, CLASS A, TYPE 2
TBF = 15 CY
- 18 87' - 18" RC PIPE CULVERT, CLASS A, TYPE 2
TBF = 96 CY
- 19 95' - 15" RC PIPE CULVERT, CLASS A, TYPE 2
TBF = 5 CY



FILE NAME = J:\2211\road\sheet\2211-sht-pp18.dgn	USER NAME = ara	DESIGNED - RJD	REVISED -	STATE OF ILLINOIS DEPARTMENT OF TRANSPORTATION	PLAN & PROFILE VIRGINIA ROAD	F.A. RTE.	SECTION	COUNTY	TOTAL SHEETS	SHEET NO.
PLOT SCALE = 20.00' / IN.	CHECKED - GAB	REVISED -	0121			03-00362-00-PV	MCHENRY	54	21	
PLOT DATE = 5/27/2009	DATE - 5-28-09	REVISED -	CONTRACT NO. 63195							
			FED. ROAD DIST. NO. ILLINOIS FED. AID PROJECT: M-9003(255)							