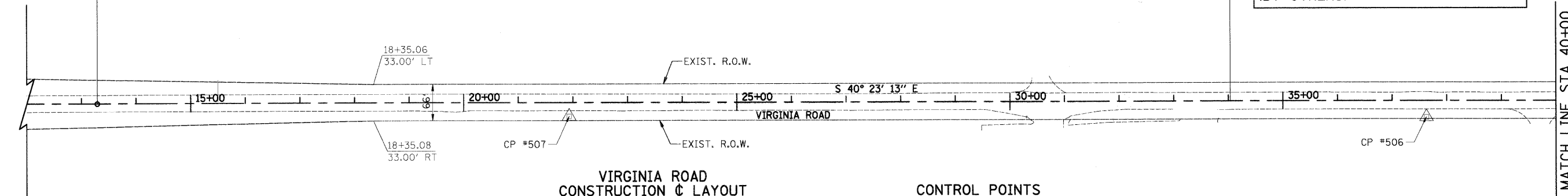


IMPROVEMENT BEGINS
STA. 13+29
N=2018937.829
E=991091.331

PROJECT OMISSION
STA. 34+03 TO STA. 54+53
WASTE MANAGEMENT OF ILLINOIS
VIRGINIA ROAD TRANSFER FACILITY
(BY OTHERS)

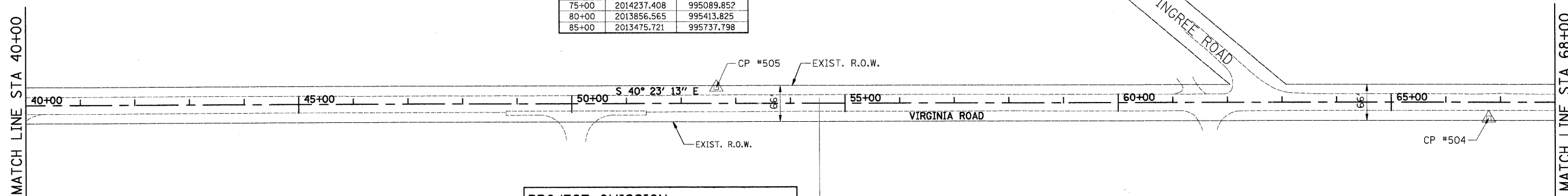


**VIRGINIA ROAD
CONSTRUCTION & LAYOUT**

STATION	NORTHING	EASTING
15+00	2018807.525	991202.176
20+00	2018426.682	991526.149
25+00	2018045.839	991850.122
30+00	2017664.996	992174.095
35+00	2017284.153	992498.068
40+00	2016903.310	992822.041
45+00	2016522.467	993146.014
50+00	2016141.623	993469.987
55+00	2015760.780	993793.960
60+00	2015379.937	994117.933
65+00	2014999.094	994441.906
70+00	2014618.215	994765.879
75+00	2014237.408	995089.852
80+00	2013856.565	995413.825
85+00	2013475.721	995737.798

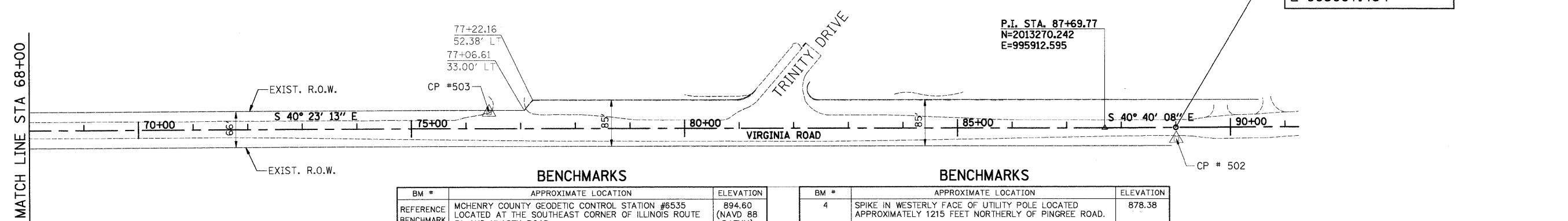
CONTROL POINTS

CP#	STATION	OFFSET	NORTHING	EASTING	ELEVATION
500	03+74.98	34.14' LT.	2019686.560	990499.226	890.16
501	96+81.86	113.60' RT.	2012635.477	996614.402	883.62
502	89+00.77	21.37' RT.	2013156.948	995981.757	872.82
503	76+42.11	29.49' LT.	2014148.277	995204.396	878.45
504	66+78.61	28.75' RT.	2014844.421	994535.736	875.18
505	52+64.59	29.54' LT.	2015959.227	993663.927	879.87
506	37+62.82	29.99' RT.	2017064.533	992645.513	885.94
507	21+93.21	25.26' RT.	2018263.150	991632.096	886.84



PROJECT OMISSION
STA. 34+03 TO STA. 54+53
WASTE MANAGEMENT OF ILLINOIS
VIRGINIA ROAD TRANSFER FACILITY
(BY OTHERS)

IMPROVEMENT ENDS
STA. 89+00
N=2013171.463
E=995997.464



BENCHMARKS

BM #	APPROXIMATE LOCATION	ELEVATION
REFERENCE BENCHMARK	MCHENRY COUNTY GEODETIC CONTROL STATION #6535 LOCATED AT THE SOUTHEAST CORNER OF ILLINOIS ROUTE 31 AND KLASSEN ROAD.	894.60 (NAVD 88 DATUM)
1	SQUARE CUT IN CONCRETE PAD OF IDOT CONTROL BOX LOCATED AT THE SOUTHWEST CORNER OF VIRGINIA ROAD AND ILLINOIS ROUTE 31.	886.35
2	SQUARE CUT ON TOP OF CONCRET END SECTION LOCATED AT THE SOUTHEAST CORNER OF VIRGINIA ROAD AND TRINITY DRIVE.	872.52
3	RIM OF SOUTHERLY TELEPHONE MANHOLE LOCATED APPROXIMATELY 510 FEET SOUTHERLY OF PINGREE ROAD.	875.87

BENCHMARKS

BM #	APPROXIMATE LOCATION	ELEVATION
4	SPIKE IN WESTERLY FACE OF UTILITY POLE LOCATED APPROXIMATELY 1215 FEET NORTHERLY OF PINGREE ROAD.	878.38
5	SPIKE IN WESTERLY FACE OF UTILITY POLE LOCATED APPROXIMATELY 2440 FEET NORTHERLY OF PINGREE ROAD.	886.48
6	SPIKE IN WESTERLY FACE OF UTILITY POLE LOCATED APPROXIMATELY 1530 FEET SOUTHERLY OF JAMES R. RAKOW ROAD.	887.47
7	CROSS CUT IN EASTERLY CORNER OF TRAFFIC SIGNAL MANHOLE IN ISLAND LOCATED AT THE INTERSECTION OF JAMES R. RAKOW ROAD AND VIRGINIA ROAD.	890.16