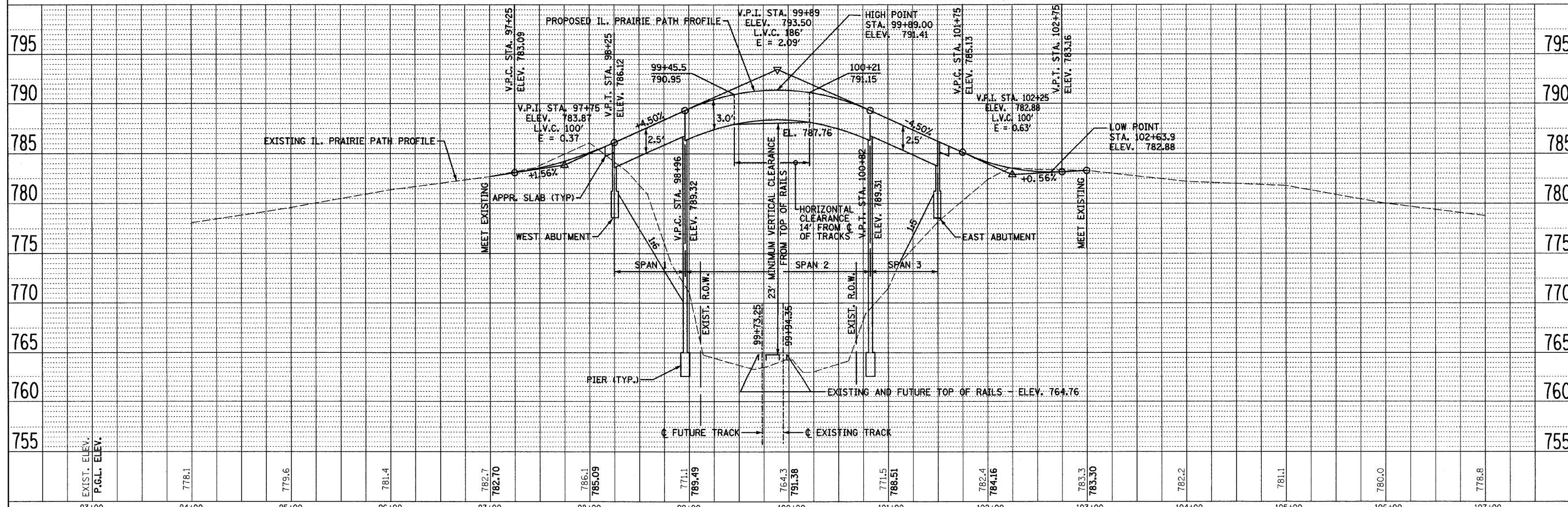


- NOTES:
- FOR SITE DETAILS AND GRADING PLAN, SEE SHEET NO. 8.
  - FOR TREE REMOVAL SEE SHEET NO. 11.



FILE NAME = 98-00313-shr-plnprf1.dgn	DESIGNED - S.J.P.	REVISED -	<b>STATE OF ILLINOIS</b> <b>DEPARTMENT OF TRANSPORTATION</b>	<b>PLAN &amp; PROFILE</b> <b>IL. PRAIRIE PATH OVER E.J. &amp; E. RAILROAD</b>	F.A.P. RTE.	SECTION	COUNTY	TOTAL SHEETS	SHEET NO.
PLLOT DATE = 8/4/2009	DRAWN - A.C.S.	REVISED -			98-00313-00-BR	DuPAGE	25	6	
<b>CHRISTIAN-ROGE &amp; ASSOCIATES, INC.</b> ENGINEERS-PLANNERS-SURVEYORS 211 WEST WACKER DRIVE CHICAGO, ILLINOIS 60606 PHONE: (312)372-2023 FAX: (312)372-5274	CHECKED - E.J.M.	REVISED -			CONTRACT NO. 63178				
DATE - AUGUST 3, 2009	REVISED -	SCALE: 1" = 50'			SHEET NO. 1 OF 2 SHEETS	STA. 97+00 TO STA. 103+00	FED. ROAD DIST. NO. 1 ILLINOIS FED. AID PROJECT		