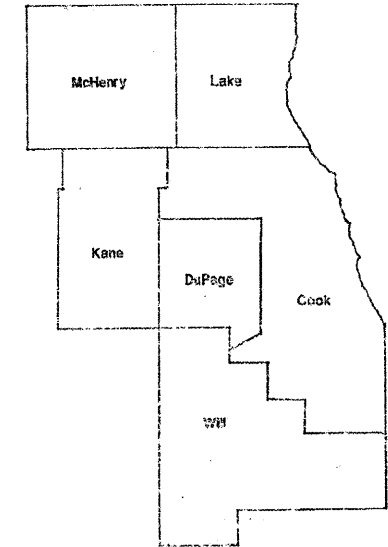


ROUTE	SECTION	COUNTY	TOTAL SHEETS	SHEET NUMBER
VARIOUS	2009-084 LS	VARIOUS	★ 19 + 1 = 20	1

D-91-882-09
CONTRACT 60I26

STATE OF ILLINOIS
DEPARTMENT OF TRANSPORTATION
DIVISION OF HIGHWAYS
DISTRICT ONE
PROPOSED HIGHWAY PLANS

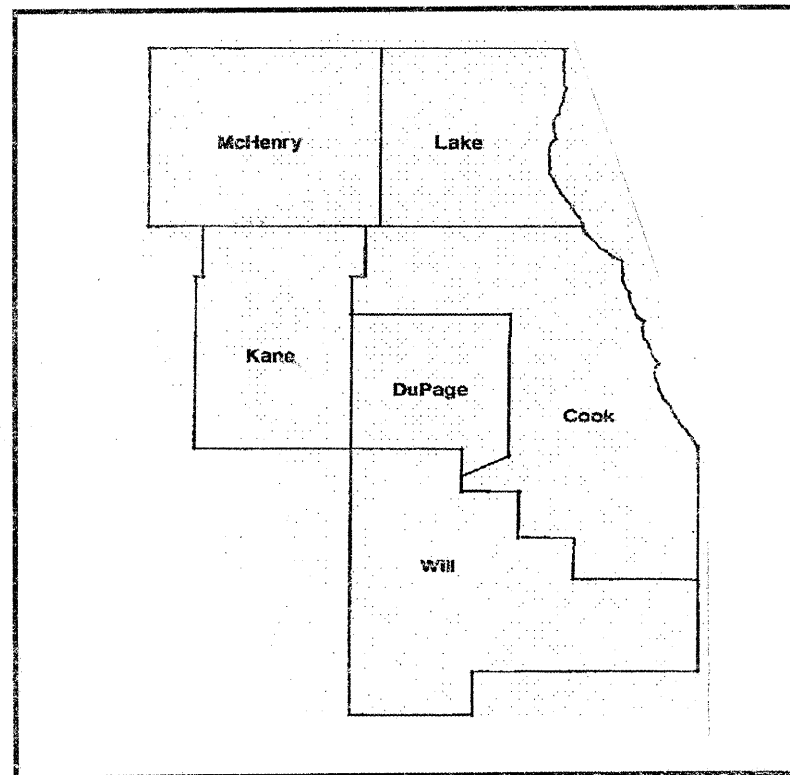
ROUTE: VARIOUS
SECTION: 2009-084 LS
PRIMARY ROUTES LANDSCAPE REPAIR & RENOVATION
VARIOUS COUNTIES
JOB NO.: C-91-882-09



LOCATION OF IMPROVEMENT INDICATED THUS:

FOR INDEX OF SHEETS SEE PAGE 2

**IMPROVEMENT IS IN VARIOUS
LOCATIONS WITHIN DISTRICT
ONE**



DISTRICT ONE BUREAU OF MAINTENANCE: J. STUMPNER
MAINTENANCE LANDSCAPE DESIGNER: R. WANNER / M. DEL ROSARIO (847) 705-4171

CONTRACT 60I26

STATE OF ILLINOIS
DEPARTMENT OF TRANSPORTATION
DIVISION OF HIGHWAYS
SUBMITTED: AUGUST 24, 2009
Diana M. O'Keefe DEPUTY DIRECTOR OF HIGHWAYS, REGION ENGINEER
October 2, 2009
Charles J. Ingersoll ENGINEER OF DESIGN AND ENVIRONMENT
October 2, 2009
Christine M. Reed DIRECTOR OF HIGHWAYS, CHIEF ENGINEER

**PRINTED BY THE AUTHORITY
OF THE STATE OF ILLINOIS**

J.U.L.I.E.: JOINT UTILITY LOCATION
INFORMATION FOR EXCAVATION
(800) 892-0123

ROUTE	SECTION	COUNTY	TOTAL SHEETS	SHEET NUMBER
VARIOUS	2009-084 LS	VARIOUS	19	2

CONTRACT 60126

INDEX OF SHEETS

STATE STANDARDS

1	TITLE SHEET	701001-02	701006-03
2	INDEX OF SHEETS, STATE STANDARDS AND GENERAL NOTES	701101-02	701106-02
3-4A.	SUMMARY OF QUANTITIES		
5	CALENDAR OF CONSTRUCTION		
6	LOCATION SUMMARY		
7-18	LAYOUT PLAN SHEETS		
19	TC 17 TRAFFIC CONTROL DETAILS FOR FREEWAY SHOULDER CLOSURES PARTIAL RAMP CLOSURES		

GENERAL NOTES

FOR ARTERIALS THE CONTRACTOR SHALL CONTACT THE DISTRICT ONE TRAFFIC CONTROL SUPERVISOR AT (847) 705-4470 A MINIMUM OF 72 HOURS IN ADVANCE OF BEGINNING WORK.

BEFORE STARTING ANY EXCAVATION THE CONTRACTOR SHALL CALL THE STATE ELECTRICAL MAINTENANCE CONTRACTOR AT (773) 287-7600, EXTENSION 601, FOR FIELD LOCATIONS OF BURIED CABLE.

THE CONTRACTOR SHALL ADHERE TO LIMITS OF RESTORATION SHOWN. AREAS OUTSIDE THESE LIMITS THAT ARE DAMAGED OR DISTURBED BY THE CONTRACTOR SHALL BE RESTORED AT THE CONTRACTOR'S OWN EXPENSE. NO ADDITIONAL COMPENSATION WILL BE ALLOWED.

BUREAU OF TRAFFIC EXPRESSWAY SECTION MUST BE CONTACTED AT (847) 705-4155 AT LEAST 24 HOURS PRIOR TO ANY WORK INVOLVING IL 52 RIGHT-OF-WAY. NO EXPRESSWAY LANE OR RAMP CLOSURES WILL BE PERMITTED WITHOUT PRIOR APPROVAL

ILLINOIS DEPARTMENT OF TRANSPORTATION

LANDSCAPE REPAIR
INDEX OF SHEETS
GENERAL NOTES
STATE STANDARDS

Rev.

ROUTE	SECTION	COUNTY	TOTAL SHEETS	SHEET NUMBER
VARIOUS	2009-084 LS	VARIOUS	19	3

PAY ITEM	DESCRIPTION	UNIT	URBAN TOTAL	Y003	
				MCHD FUND	CONTRACT MAINT FUND
21101605	TOPSOIL FURNISH AND PLACE, 2"	SQ YD	400	100	300
21101615	TOPSOIL FURNISH AND PLACE, 4"	SQ YD	2420	1210	1210
25000210	SEEDING, CLASS 2A	ACRE	0.50	0.25	0.25
25000400	NITROGEN FERTILIZER NUTRIENT	POUND	46	23	23
25000500	PHOSPHORUS FERTILIZER NUTRIENT	POUND	46	23	23
25000600	POTASSIUM FERTILIZER NUTREINT	POUND	46	23	23
25000750	MOWING	ACRE	10		10
25003321	INTERSEEDING, CLASS 5 (MODIFIED)	ACRE	2		2
25100630	EROSION CONTROL BLANKET	SQ YD	2420	1210	1210
25100900	TURF REINFORCEMENT MAT	SQ YD	50	25	25
25200200	SUPPLEMENTAL WATERING	UNIT	5		5
A2000114	TREE, ACER X FREEMANII AUTUMN BLAZE (AUTUMN BLAZE FREEMAN MAPLE), 1-3/4" CALIPER, BALLED AND BURLAPPED	EACH	5	3	2
A2000316	TREE, ACER MIYABEI MORTON (STATE STREET MIYABEI MAPLE), 2" CALIPER, BALLED AND BURLAPPED	EACH	26	4	22
A2002916	TREE, CELTIS OCCIDENTALIS (COMMON HACKBERRY), 2" CALIPER, BALLED AND BURLAPPED	EACH	16	3	13
A2004716	TREE, GLEDITSIA TRIACANTHOS INERMIS SHADEMASTER (SHADEMASTER THORNLESS COMMON HONEYLOCUST), 2" CALIPER, BALLED AND BURLAPPED	EACH	13	6	7
A2005016	TREE, GYMNOCLADUS DIOICUS (KENTUCKY COFFEETREE), 2" CALIPER, BALLED AND BURLAPPED	EACH	32	4	28
A2006514	TREE, QUERCUS BICOLOR (SWAMP WHITE OAK), 1-3/4" CALIPER, BALLED AND BURLAPPED	EACH	12	5	7
A2006716	TREE, QUERCUS MACROCARPA (BUR OAK), 2" CALIPER, BALLED AND BURLAPPED	EACH	9	4	5
A2007210	TREE, QUERCUS X MACDANIELLI CLEMONS (HERITAGE OAK), 2" CALIPER, BALLED AND BURLAPPED	EACH	20	3	17

CONTRACT 60126

ILLINOIS DEPARTMENT OF TRANSPORTATION

SUMMARY OF QUANTITIES

ROUTE	SECTION	COUNTY	TOTAL SHEETS	SHEET NUMBER
VARIOUS	2009-084 LS	VARIOUS	19	4

PAY ITEM	DESCRIPTION	UNIT	TOTAL	4003		CONTRACT 60126
				MCHD FUND	CONTRACT MAINT FUND	
A2007916	TREE, TILIA AMERICANA REDMOND (REDMOND AMERICAN LINDEN), 2" CALIPER, BALLED AND BURLAPPED	EACH	5	3	2	
B2000766	TREE, AMELANCHIER X GRANDIFLORA AUTUMN BRILLIANCE (AUTUMN BRILLIANCE SERVICE BERRY), 6' HEIGHT, SHRUB FORM, BALLED AND BURLAPPED	EACH	12	2	10	
B2001614	TREE, CRATAEGUS CRUSGALLI INERMIS (THORN LESS COCKSPUR HAWTHORN), 1-3/4" CALIPER TREE FORM, BALLED AND BURLAPPED	EACH	13	4	9	
B2006116	TREE, SYRINGA PEKINENSIS MORTON (CHINA SNOW PEKING LILAC), 2" CALIPER, TREE FORM, BALLED AND BURLAPPED	EACH	15	3	12	
D2002760	EVERGREEN, PINUS NIGRA (AUSTRIAN PINE), 5' HEIGHT, BALLED AND BURLAPPED	EACH	8	4	4	
K0030450	PERENNIAL PLANTS, DAFFODIL BULBS	UNIT	1		1	
K0036120	MULCH PLACEMENT 4"	SQ YD	150		150	
K0039000	PERENNIAL PLANTS, SEDGE MEADOW TYPE	UNIT	1		1	
K1004469	PERENNIAL PLANTS, PRAIRIE TYPE	UNIT	1		1	
K1004485	PERENNIAL PLANTS, WETLAND TYPE	UNIT	1		1	
X0301407	PERENNIAL PLANTS, GALLON POT	UNIT	1		1	
X0322856	WEED CONTROL, NON-SELECTIVE AND NON-RESIDUAL	GALLON	10		10	
X0322953	INTERSEEDING, CLASS 4 (MODIFIED)	ACRE	10		10	
X0325921	PLANT CARE	SQ YD	250		250	
X2010300	TREE REMOVAL (UNDER 6 UNITS DIAMETER)	UNIT	25		25	
Z0064800	SELECTIVE CLEARING	UNIT	5		5	

(Cont. on 4A.)

ILLINOIS DEPARTMENT OF TRANSPORTATION
SUMMARY OF QUANTITIES

<u>PAY CODE</u>	<u>DESCRIPTION</u>	<u>UNIT</u>	<u>Y003 CONTRACT MAINT FUND URBAN TOTAL QUANTITY</u>
C200548	Shrub, Aronia melanocarpa (Black Chokeberry), 4' Height, Balled and Burlapped	EACH	25
C2C04665	Shrub, Physocarpus opulifolius Monlo (Diabolo Common Ninebark), 24" Height, 5-Gallon Container	EACH	25
C2C06165	Shrub, Rhus copallina var. latifolia Morton (Prairie Flame Shining Sumac), 30" Height, 5-Gallon Container	EACH	25
C2C11865	Shrub, Viburnum dentatum 'Christom' (Blue Muffin Arrowwood Viburnum), 24" Height, 5-Gallon Container	EACH	25
C2000348	Shrub, Aronia arbutifolia (Red Choke Berry), 4' Height, Balled And Burlapped	EACH	25
C2C00324	Shrub, Aronia melanocarpa Iroquois Beauty (Iroquois Beauty Black Chokeberry), 2' Height, Container	EACH	25
C2002048	Shrub, Corylus americana (American Filbert), 4' Height, Balled Burlapped	EACH	25
C2003236	Shrub, Hamamelis vernalis (Vernal Witch Hazel), 3' Height, Balled and Burlapped	EACH	25
C2C05818	Shrub, Rhus aromatica Gro-Low (Gro-Low Fragrant Sumac), 18" Width, Container	EACH	25
C3005724	Shrub, Rhus aromatica (Fragrant Sumac), 2' Height, Bare Root	EACH	50
C3005924	Shrub, Rhus glabra (Smooth Sumac), 2' Height, Bare Root	EACH	50
C2006626	Shrub, Rosa Blushing Knockout (Blushing Knockout), 18" Height, Container	EACH	25
C2011134	Shrub, Syringa x persica (Persian Lilac), 2' Height, Balled And Burlapped	EACH	25
C2011848	Shrub, Viburnum dentatum; Morton (Northern Burgundy Arrowwood Viburnum), 4' Height, Balled and Burlapped	EACH	25

SUMMARY OF QUANTITIES

ROUTE	SECTION	COUNTY	TOTAL SHEETS	SHEET NUMBER
VARIOUS	2009-084 LS	VARIOUS	19	5

CONTRACT 60I26

Calendar of Construction

Phases	Phase I		Phase II		Phase III		Phase IV		Phase V		Phase VI		Phase VII	
	December	January	February	March	April	May	June	July	August	September	October	November	December	
Plant Material														
Submit completed plant inspection forms to IDOT by Jan 31 for spring planting season & July 31 for fall planting season	█	█							█					
Seeding														
Seeding, Class 2A Spring: March 15 - June 1 Fall: Aug 1 - Sept 15 Dormant: Nov 1 - March 15	█	█	█	█	█	█			█	█			█	█
Seeding, Class 5 (Modified) Dormant: November 1 - March 15		█	█	█									█	█
Seeding, Class 4A (Modified) Dormant: Nov 1 - March 15		█	█	█									█	█
Mowing: Mow area to be interseeded to a maximum height of 3"									█					
Weed Control, Non-Selective, Non-Residual: spray area to be interseeded									█	█	█			
Interseeding, Class 4 & 4A (Modified) Dormant: Nov 1 - March 15		█	█	█									█	█
Interseeding, Class 5 (Modified) Dormant: Nov 1 - March 15		█	█	█									█	█
Perennial Bed Preparation														
Turf Removal (Round-up or sod cutting) Round-Up: 2 weeks prior to planting						█	█		█	█				
Perennial Plants														
Woodland Type Plants: April 1 - May 15					█	█								
Ornamental Herbaceous, Prairie, Wetland Emergent & Sedge Meadow Plants: May 1 - June 15 or Aug 15 - Sept 15						█	█		█	█				
Bulbs: Oct 15 - Nov 30												█	█	█
Tree / Shrub / Vine Planting														
Spring plantings of balled and burlapped & container stock: March 15 - May 15				█	█	█								
Seedlings, broadleaf evergreens, vines & willow, poplar, oak, alder, birch, hawthorn, red maple, cherry & pear only in spring: March 15 - May 15				█	█	█								
Evergreens (spring): March 15 - April 30				█	█									
Fall planting of balled and burlapped: Oct 15 - Nov 30												█	█	█
Evergreens (fall): August 15 - Oct 15									█	█				
Plant Care														
Plant Care: April 15 - April 30 & May 15 - May 30					█	█		█	█					
Mulch Placement: May 15 - June 15								█	█					
Supplemental Watering: as determined by the RE during May 15 - Sept 15								█	█	█	█	█		

ILLINOIS DEPARTMENT OF TRANSPORTATION
CALENDAR OF CONSTRUCTION

ROUTE	SECTION	COUNTY	TOTAL SHEETS	SHEET NUMBER
VARIOUS	2009-084 LS	VARIOUS	19	6

CONTRACT 60126

LOCATION SUMMARY

COUNTY	CITY/TOWN	CLAIM #	SHEET #	GENERAL LOCATION
LAKE	LAKE ZURICH	N/A	7	US 12 AND ELA RD.
LAKE	LIBERTYVILLE / MUNDELEIN	N/A	8	US 45: ILL 137 TO ILL 176
COOK	PALATINE	754213	9	ILL 53 NORTH ENTRANCE RAMP FROM EAST PALATINE RD.
COOK	PALATINE	N/A	10	ILL 53 NORTH, WEST PALATINE RD. EXIT RAMP
COOK	SCHAUMBURG	N/A	11	ILL 53 N & S, N/O ILL 58 TO S/O ILL 72
COOK	HOFFMAN ESTATES	748684	12	HIGGINS RD.: EAST OF ASH RD.
COOK	CHICAGO	N/A	13	ARCHER AVE.: EAST OF CHICAGO RIVER
COOK	HARVEY	N/A	14	LATHROP AVE.: SOUTH OF 167 TH ST.
COOK	SAUK VILLAGE	N/A	15	ILL 394: SOUTH OF SAUK TRAIL
DUPAGE	ADDISON	N/A	16	US 20 (LAKE ST.): EAST OF MEDINAH RD.
DUPAGE	NAPERVILLE	N/A	17	US 34 (OGDEN AVE.) & AURORA AVE.
VARIOUS	VARIOUS	N/A	18	VARIOUS LOCATIONS

ILLINOIS DEPARTMENT OF TRANSPORTATION
 LOCATION SUMMARY

ROUTE	SECTION	COUNTY	TOTAL SHEETS	SHEET NUMBER
VARIOUS	2009-084 LS	VARIOUS	19	7

CONTRACT 60126

SCHEDULE OF LANDSCAPE ITEMS
DESCRIPTION QTY/UNIT

CRATAEGUS CRUSGALLI VAR. INERMIS THORNLESS COCKSPUR	5 EACH
PINUS NIGRA AUSTRIAN PINE	1 EACH
QUERCUS MACROCARPA BUR OAK	2 EACH
RHUS TYPHINA STAGHORN SUMAC	15 EACH
ACER MIYABEI MORTON STATE STREET MIYABE MAPLE	1 EACH

GENERAL LOCATION MAP

COUNTY: LAKE
CLAIM: N/A

CITY/TOWN: LAKE ZURICH

WORK AREA IS LOCATED AT US 12 AND ELA RD. PLANS WILL BE GIVEN BY RESIDENT ENGINEER.

ILLINOIS DEPARTMENT OF TRANSPORTATION
LANDSCAPE REPAIR LOCATION AND LAYOUT PLAN

ROUTE	SECTION	COUNTY	TOTAL SHEETS	SHEET NUMBER
VARIOUS	2009-084 LS	VARIOUS	19	8

CONTRACT 60126

SCHEDULE OF LANDSCAPE ITEMS

DESCRIPTION	QTY/UNIT
ACER MIYABEI MORTON STATE STREET MAPLE	5 EACH
GYMNOCLADUS DIOICUS KENTUCKY COFFEETREE	5 EACH
SYRINGA PEKINENSIS MORTON CHINA SNOW PEKING LILAC	10 EACH

WORK AREA IS LOCATED ON US 45 FROM ILL 137 TO ILL 176. PLANS WILL BE GIVEN BY RESIDENT ENGINEER.

GENERAL LOCATION MAP



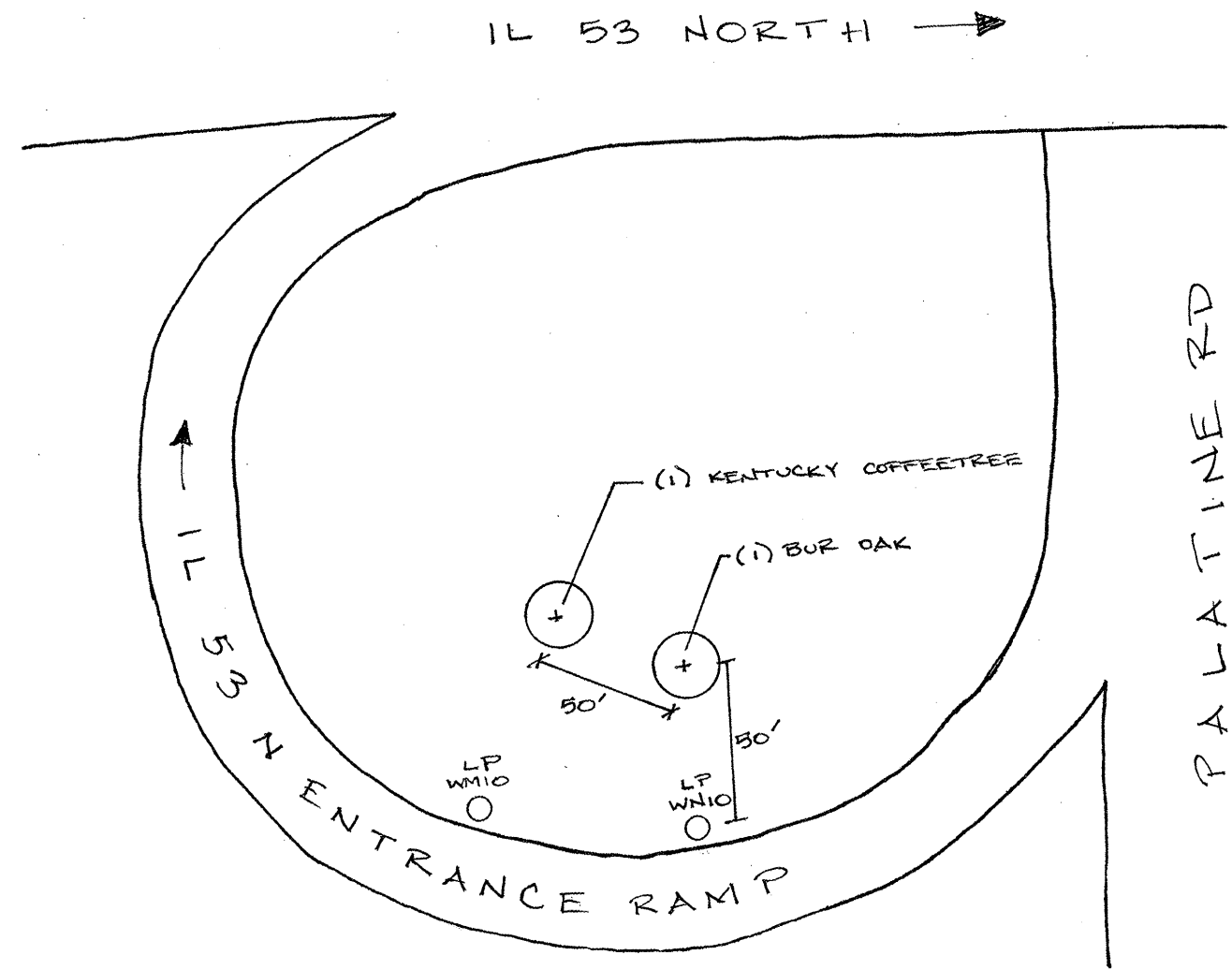
COUNTY: LAKE
CLAIM: N/A

CITY/TOWN: LIBERTYVILLE / MUNDELEIN

ILLINOIS DEPARTMENT OF TRANSPORTATION
LANDSCAPE REPAIR LOCATION AND LAYOUT PLAN

ROUTE	SECTION	COUNTY	TOTAL SHEETS	SHEET NUMBER
VARIOUS	2009-084 LS	VARIOUS	19	9

CONTRACT 60126



GENERAL LOCATION MAP

COUNTY: COOK
CLAIM: 754213

CITY/TOWN: PALATINE

SCHEDULE OF LANDSCAPE ITEMS

DESCRIPTION	QTY/UNIT
GYMNOCLADUS DIOICUS KENTUCKY COFFEETREE	1 EACH
QUERCUS MACROCARPA BUR OAK	1 EACH

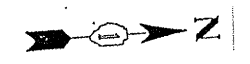
NOT DRAWN TO SCALE

ILLINOIS DEPARTMENT OF TRANSPORTATION

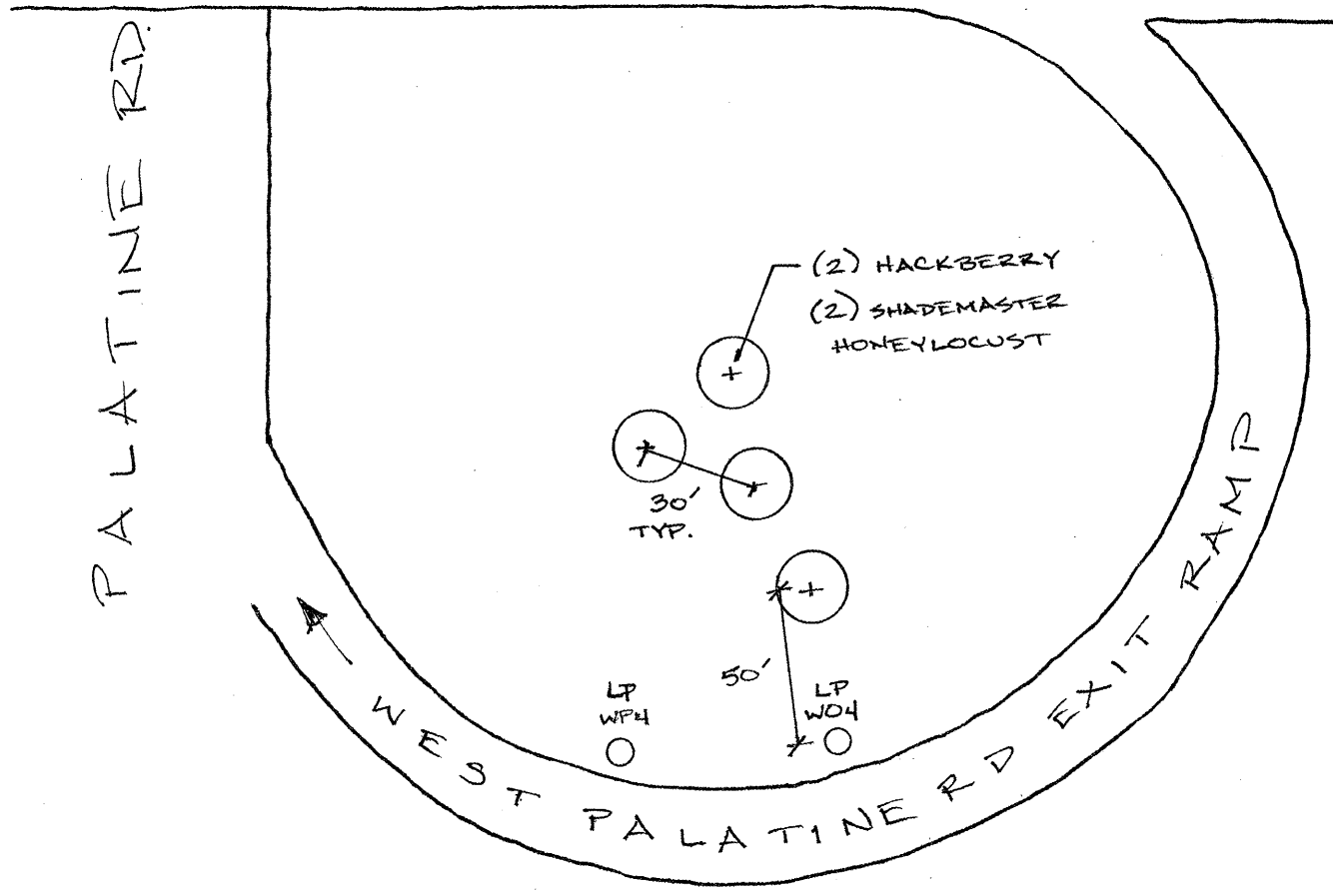
LANDSCAPE REPAIR LOCATION AND
LAYOUT PLAN

ROUTE	SECTION	COUNTY	TOTAL SHEETS	SHEET NUMBER
VARIOUS	2009-084 LS	VARIOUS	19	10

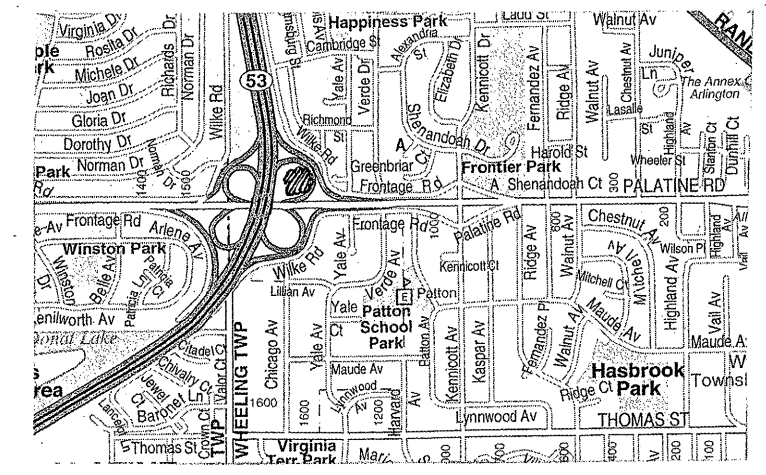
CONTRACT 60I26



IL 53 NORTH →



GENERAL LOCATION MAP



COUNTY: COOK
CLAIM: N/A

CITY/TOWN: PALATINE

SCHEDULE OF LANDSCAPE ITEMS

DESCRIPTION	QTY/UNIT
CELTIS OCCIDENTALIS	
HACKBERRY	2 EACH
GLEDITSIA TRIACANTHOS VAR. INERMIS	
'SHADEMASTER' SHADEMASTER HONEYLOCUST	2 EACH

NOT DRAWN TO SCALE

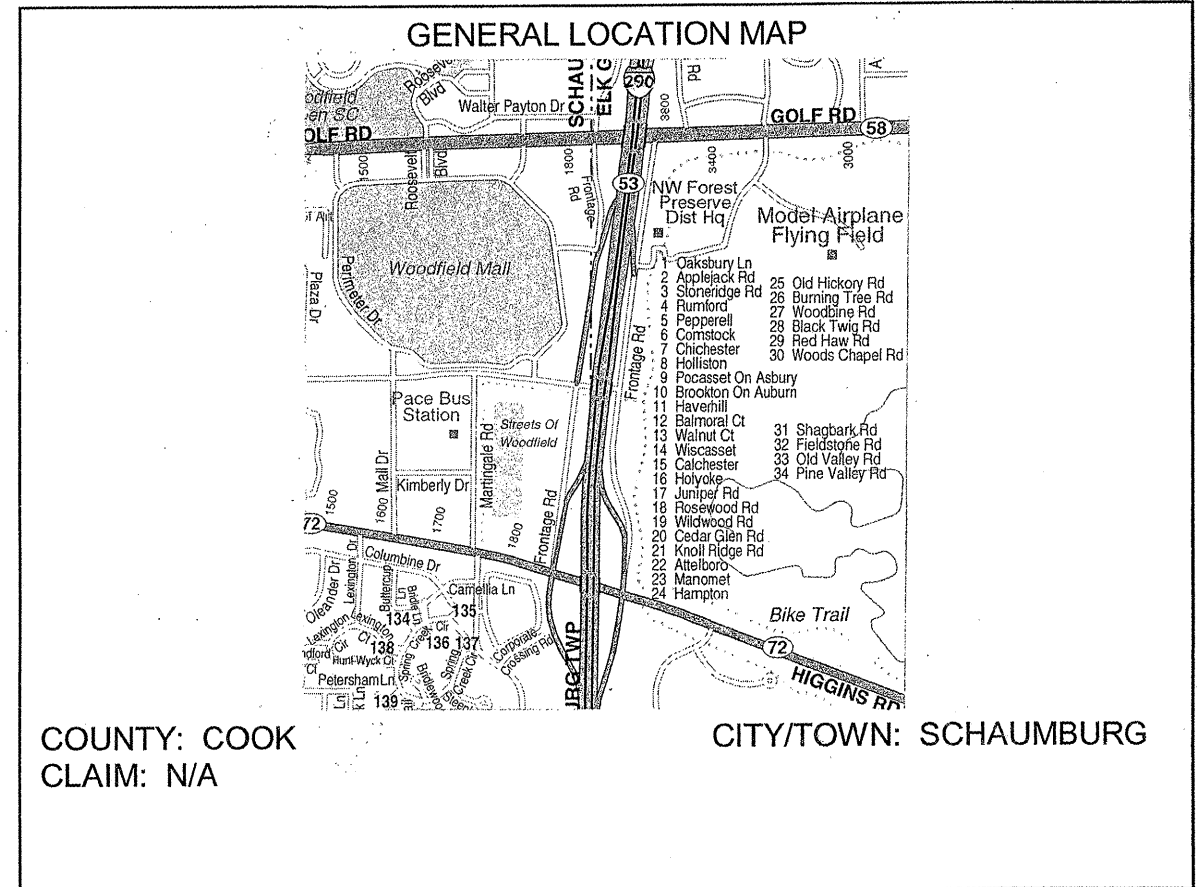
ILLINOIS DEPARTMENT OF TRANSPORTATION
LANDSCAPE REPAIR LOCATION AND LAYOUT PLAN

ROUTE	SECTION	COUNTY	TOTAL SHEETS	SHEET NUMBER
VARIOUS	2009-084 LS	VARIOUS	19	11

CONTRACT 60126

SCHEDULE OF LANDSCAPE ITEMS
DESCRIPTION QTY/UNIT

MOWING	8 ACRES
WEED CONTROL, NON-SELECTIVE AND NON-RESIDUAL	8 GALLONS
INTERSEEDING, CLASS 4	8 ACRES



WORK AREA IS LOCATED NORTHBOUND AND SOUTHBOUND ON ILL 53, NORTH OF ILL 58 TO SOUTH OF ILL 72. PLANS WILL BE GIVEN BY RESIDENT ENGINEER.

ILLINOIS DEPARTMENT OF TRANSPORTATION
LANDSCAPE REPAIR LOCATION AND LAYOUT PLAN

ROUTE	SECTION	COUNTY	TOTAL SHEETS	SHEET NUMBER
VARIOUS	2009-084 LS	VARIOUS	19	12

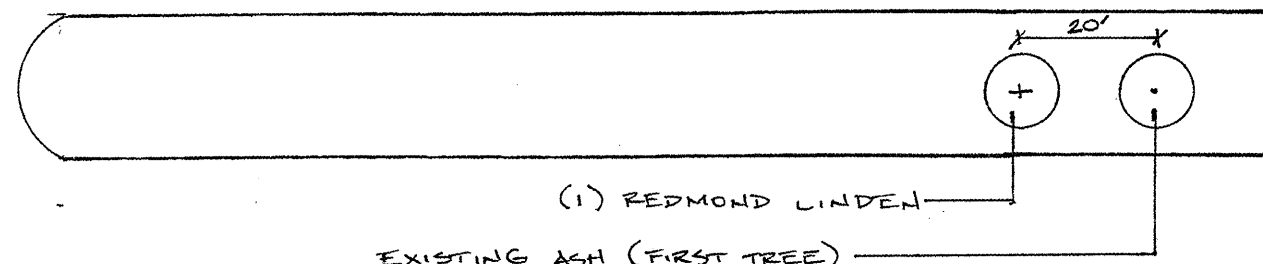
CONTRACT 60126



ASH RD.

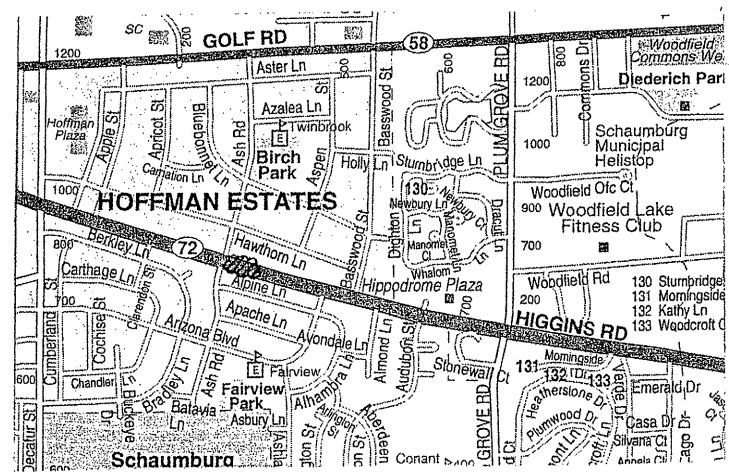
HIGGINS RD.

~ 210'



NOT DRAWN TO SCALE

GENERAL LOCATION MAP



COUNTY: COOK
CLAIM: 748684

CITY/TOWN: HOFFMAN ESTATES

SCHEDULE OF LANDSCAPE ITEMS

DESCRIPTION	QTY/UNIT
TILIA AMERICANA 'REDMOND'	
REDMOND LINDEN	1 EACH

ILLINOIS DEPARTMENT OF TRANSPORTATION
LANDSCAPE REPAIR LOCATION AND LAYOUT PLAN

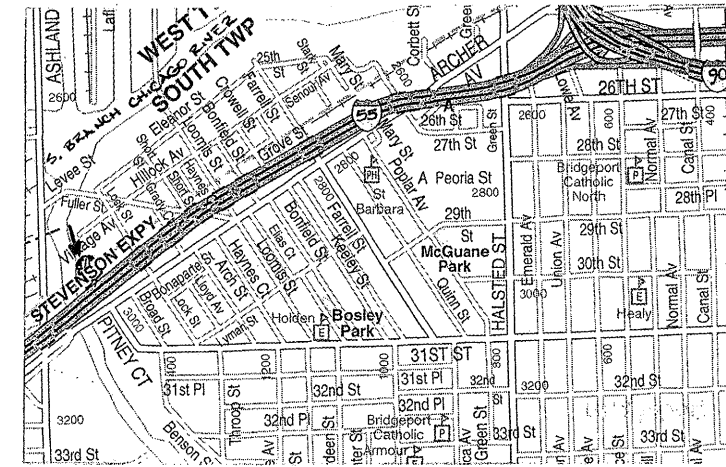
ROUTE	SECTION	COUNTY	TOTAL SHEETS	SHEET NUMBER
VARIOUS	2009-084 LS	VARIOUS	19	13

CONTRACT 60126

SCHEDULE OF LANDSCAPE ITEMS
DESCRIPTION QTY/UNIT

CELTIS OCCIDENTALIS
HACKBERRY 5 EACH

GENERAL LOCATION MAP



COUNTY: COOK
CLAIM: N/A

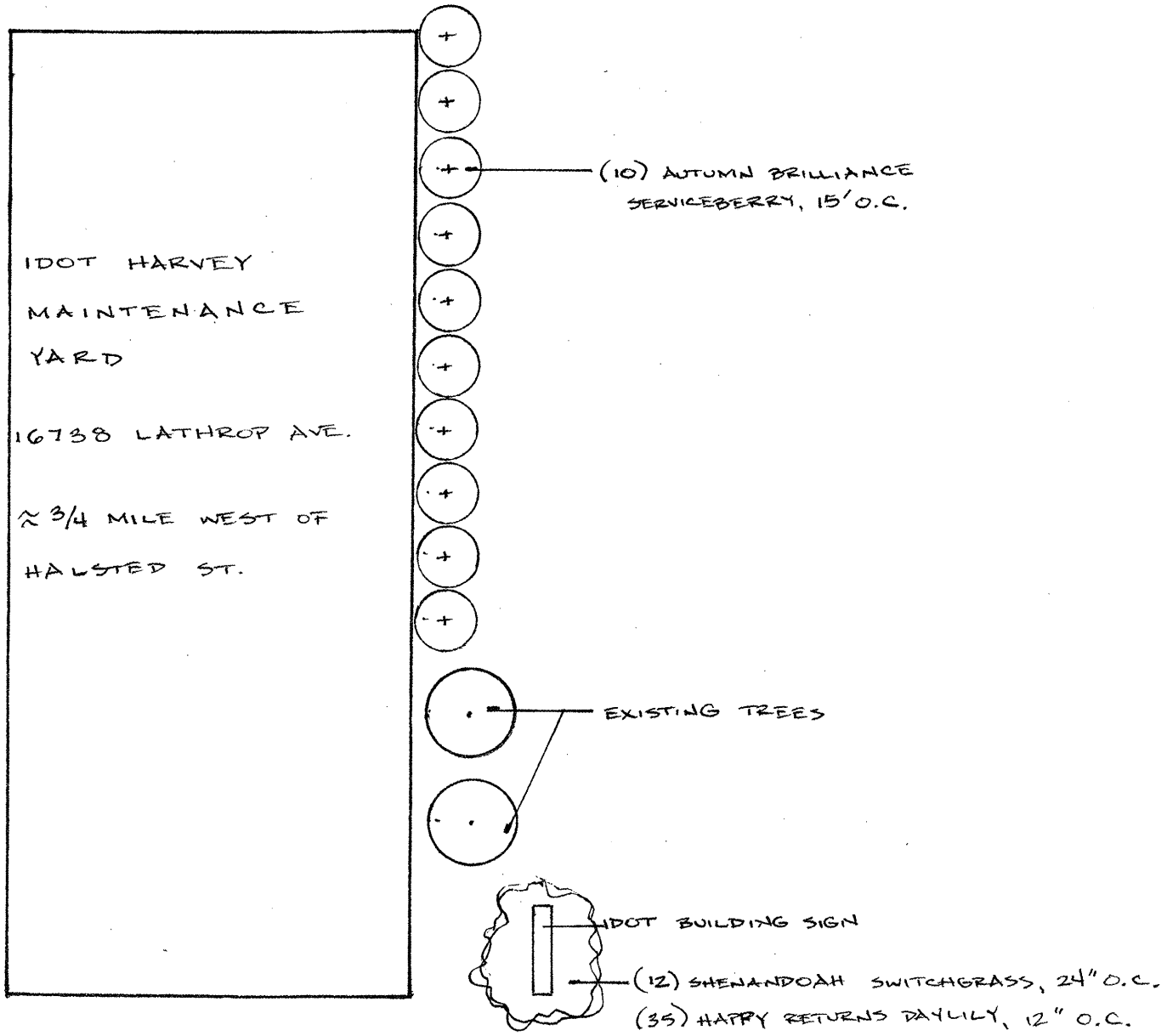
CITY/TOWN: CHICAGO

WORK AREA IS LOCATED EAST OF ASHLAND AVENUE ON ARCHER AVENUE. TREES WILL BE PLANTED ON THE EAST SIDE OF THE CHICAGO RIVER. PLANS WILL BE GIVEN BY RESIDENT ENGINEER.

ILLINOIS DEPARTMENT OF TRANSPORTATION
LANDSCAPE REPAIR LOCATION AND LAYOUT PLAN

ROUTE	SECTION	COUNTY	TOTAL SHEETS	SHEET NUMBER
VARIOUS	2009-084 LS	VARIOUS	19	14

CONTRACT 60126



GENERAL LOCATION MAP

COUNTY: COOK
CLAIM: N/A

CITY/TOWN: HARVEY

SCHEDULE OF LANDSCAPE ITEMS

DESCRIPTION	QTY/UNIT
AMELANCHIER GRANDIFLORA 'AUTUMN BRILLIANCE' AUTUMN BRILLIANCE SERVICEBERRY	10 EACH
HEMEROCALLIS 'HAPPY RETURNS' HAPPY RETURNS DAYLILY	0.35 UNIT
PANICUM VIRGATUM 'SHENANDOAH' SHENANDOAH SWITCHGRASS	0.12 UNIT

NOT DRAWN TO SCALE

ILLINOIS DEPARTMENT OF TRANSPORTATION

LANDSCAPE REPAIR LOCATION AND
LAYOUT PLAN

ROUTE	SECTION	COUNTY	TOTAL SHEETS	SHEET NUMBER
VARIOUS	2009-084 LS	VARIOUS	19	15

CONTRACT 60126

SCHEDULE OF LANDSCAPE ITEMS
DESCRIPTION QTY/UNIT

ACER MIYABEI MORTON STATE STREET MIYABE MAPLE	15 EACH
GYMNOCLADUS DIOICUS KENTUCKY COFFEETREE	20 EACH
QUERCUS X MACDANIELLI 'CLEMONS' HERITAGE OAK	15 EACH

GENERAL LOCATION MAP

COUNTY: COOK
CLAIM: N/A

CITY/TOWN: SAUK VILLAGE

WORK AREA IS LOCATED ON ILL 394, SOUTH OF SAUK TRAIL. PLANS WILL BE GIVEN BY RESIDENT ENGINEER.

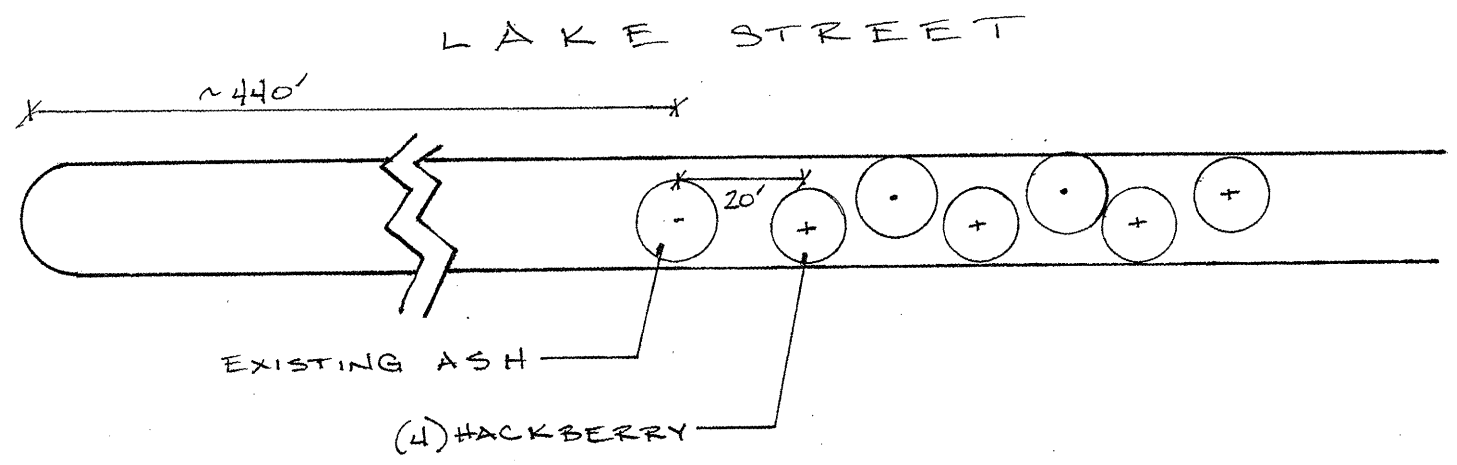
ILLINOIS DEPARTMENT OF TRANSPORTATION
LANDSCAPE REPAIR LOCATION AND LAYOUT PLAN

ROUTE	SECTION	COUNTY	TOTAL SHEETS	SHEET NUMBER
VARIOUS	2009-084 LS	VARIOUS	19	16

CONTRACT 60126



MEDINAH ROAD



GENERAL LOCATION MAP

COUNTY: DUPAGE
CLAIM: N/A

CITY/TOWN: ADDISON

SCHEDULE OF LANDSCAPE ITEMS

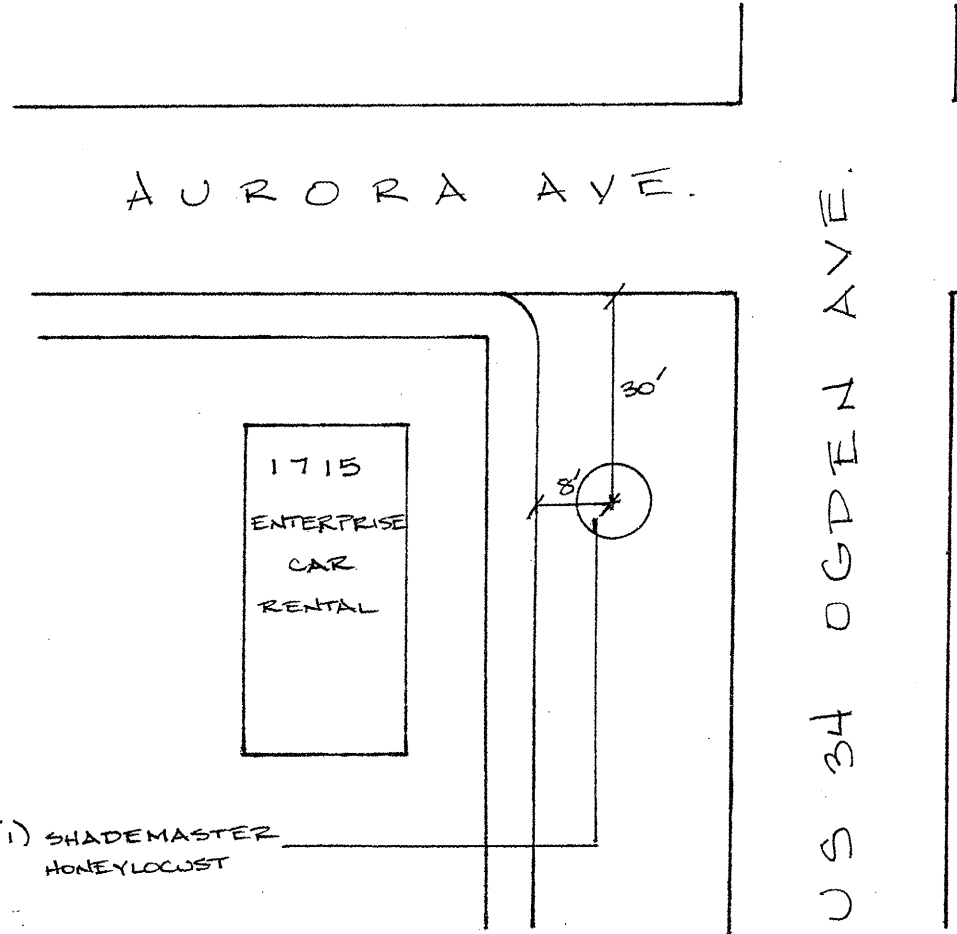
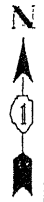
DESCRIPTION	QTY/UNIT
CELTIS OCCIDENTALIS HACKBERRY	4 EACH

NOT DRAWN TO SCALE

ILLINOIS DEPARTMENT OF TRANSPORTATION
LANDSCAPE REPAIR LOCATION AND LAYOUT PLAN

ROUTE	SECTION	COUNTY	TOTAL SHEETS	SHEET NUMBER
VARIOUS	2009-084 LS	VARIOUS	19	17

CONTRACT 60126



(1) SHADEMASTER HONEYLOCUST

NOT DRAWN TO SCALE

GENERAL LOCATION MAP

COUNTY: DUPAGE
CLAIM: N/A

CITY/TOWN: NAPERVILLE

SCHEDULE OF LANDSCAPE ITEMS

DESCRIPTION	QTY/UNIT
GLEDITSIA TRIACANTHOS VAR. INERMIS	
'SHADEMASTER'	
SHADEMASTER HONEYLOCUST	1 EACH

ILLINOIS DEPARTMENT OF TRANSPORTATION
LANDSCAPE REPAIR LOCATION AND
LAYOUT PLAN

ROUTE	SECTION	COUNTY	TOTAL SHEETS	SHEET NUMBER
VARIOUS	2009-084 LS	VARIOUS	19	18

CONTRACT 60I26

SCHEDULE OF LANDSCAPE ITEMS
 DESCRIPTION QTY/UNIT

ACER X FREMANII 'AUTUMN BLAZE'	2** EACH
** (2) Autumn Blaze Maple will be planted on Mannheim Rd.	
ACER MIYABEI MORTON	1 EACH
CELTIS OCCIDENTALIS	2 EACH
GLEDITSIA TRIACANTHOS VAR. INERMIS 'SHADEMASTER'	4 EACH
GYMNOCLADUS DIOICUS	3 EACH
QUERCUS X MACDANIELLI 'CLEMONS'	2 EACH
QUERCUS BICOLOR	7 EACH
QUERCUS MACROCARPA	3 EACH
TILIA AMERICANA 'REDMOND'	2 EACH
CRATAEGUS CRUSGALLI VAR. INERMIS	4 EACH
SYRINGA PEKINENSIS 'MORTON'	2 EACH
PINUS NIGRA	3 EACH

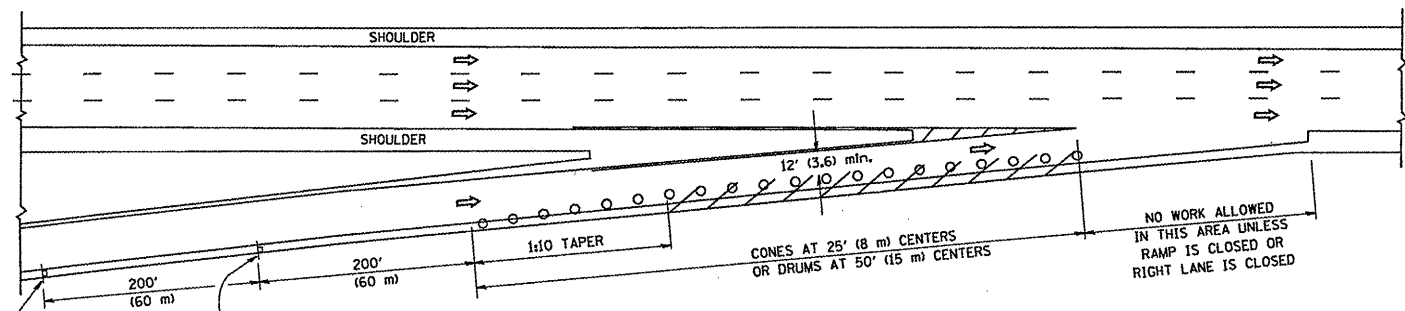
NOTE: LOCATIONS OF LANDSCAPE ITEMS WILL BE DETERMINED BY THE RESIDENT ENGINEER.

ILLINOIS DEPARTMENT OF TRANSPORTATION
 LANDSCAPE REPAIR LOCATION AND
 LAYOUT PLAN

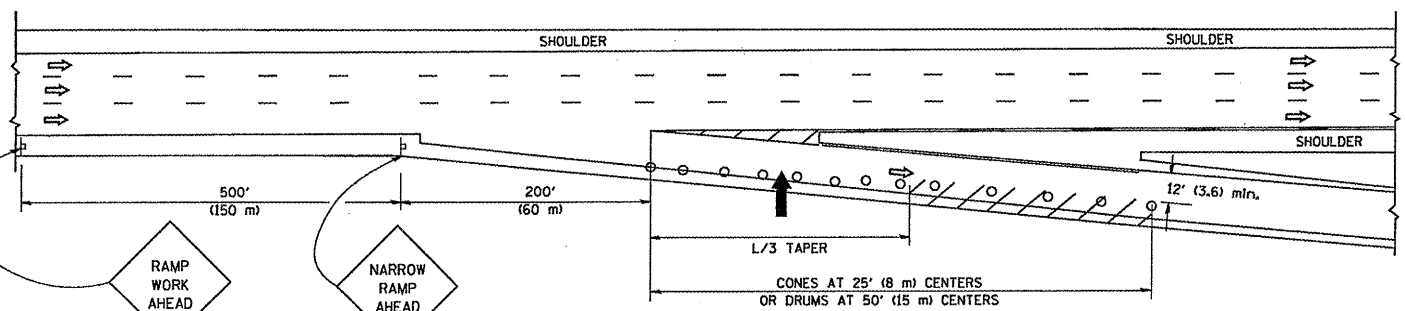
PARTIAL RAMP CLOSURE DETAILS

SHOULDER CLOSURE DETAILS

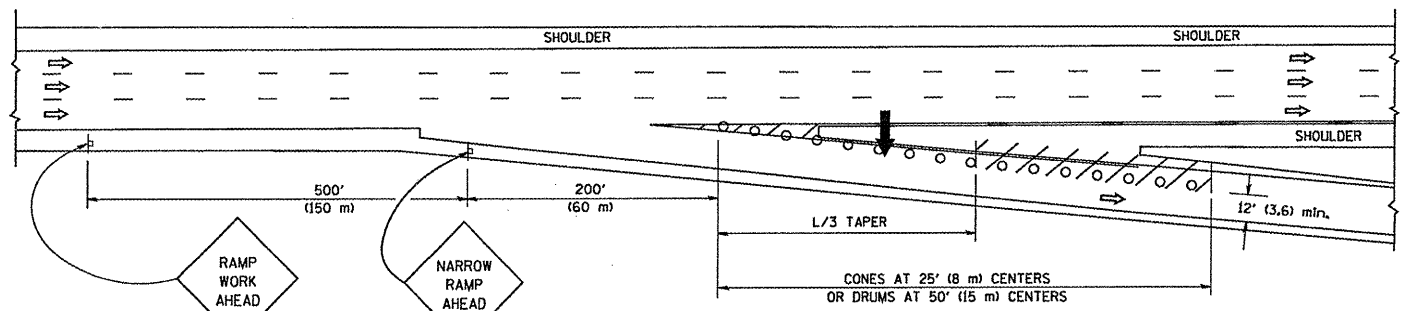
F.A.P. RTE.	SECTION	COUNTY	TOTAL SHEETS	SHEET NO.
VAR 2009-084 US	VARIOUS	VARIOUS	19	19
STA.		TO STA.		
FED. ROAD DIST. NO.		ILLINOIS FED. AID PROJECT		



TYPICAL ENTRANCE RAMP



TYPICAL EXIT RAMP



TYPICAL EXIT RAMP

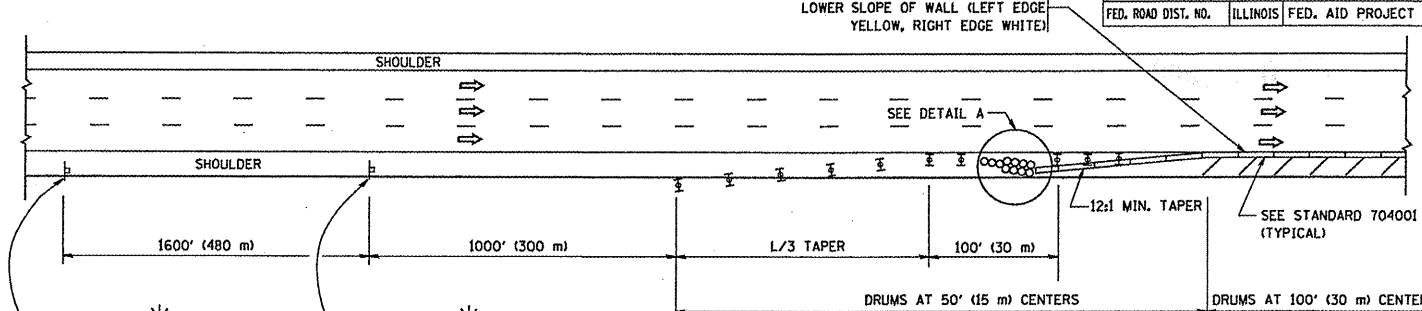
SYMBOLS

- ARROWBOARD
- WORK AREA
- SIGN ON PORTABLE OR PERMANENT SUPPORT
- FLAGGER WITH CONTROL SIGN
- TYPE II BARRICADE, DRUM OR VERTICAL BARRICADE WITH STEADY BURN MONO-DIRECTIONAL LIGHT
- CONE, DRUM OR BARRICADE

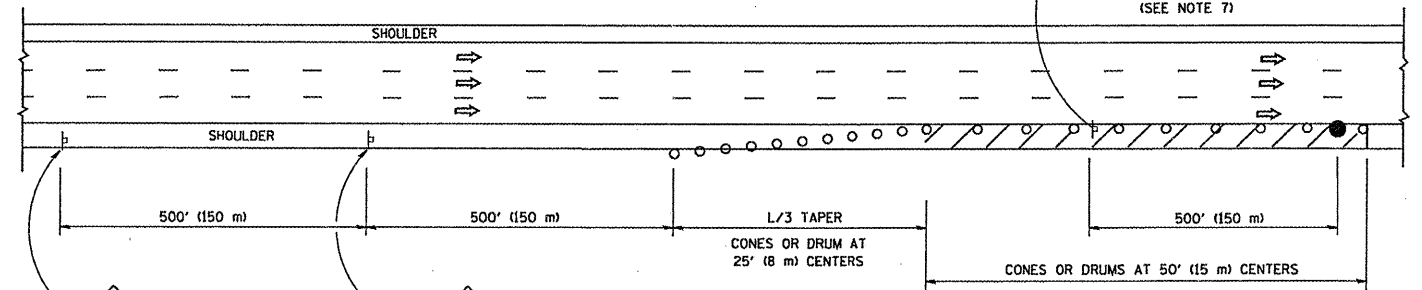
GENERAL NOTES

1. THE "L" DISTANCE EQUALS:

SPEED LIMIT	FORMULAS
45 mph (80 km/h)	METRIC ENGLISH
OR GREATER:	$L=0.65(W)(S)$ $L=(W)(S)$
	W = WIDTH OF OFFSET IN FEET (METERS)
	S = NORMAL POSTED SPEED MPH (KM/H)
2. PLASTIC DRUMS WITH HIGH PERFORMANCE REFLECTIVE SHEETING AND STEADY BURNING LIGHTS ARE REQUIRED FOR ALL NIGHTTIME CLOSURES.
3. ALL SIGNS SHALL BE POST MOUNTED IF THE CLOSURE TIME EXCEEDS FOUR DAYS.
4. FLASHING LIGHTS SHALL BE USED DURING THE HOURS OF DARKNESS AND SHALL BE INSTALLED ABOVE THE FIRST TWO SETS OF SIGNS.

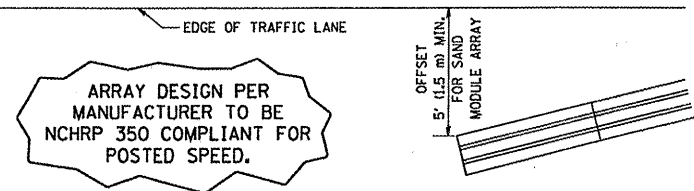


PERMANENT SHOULDER CLOSURE



DAYTIME SHOULDER CLOSURE

THIS DETAIL IS USED WHERE:
 1. VEHICLES, EQUIPMENT, WORKERS OR THEIR ACTIVITIES ENCR OACH IN AN AREA CLOSER THAN 15' (4.5 m) TO THE EDGE OF PAVEMENT FOR A PERIOD IN EXCESS OF 15 MINUTES.



DETAIL "A"
 IMPACT ATTENUATOR, TEMPORARY
 (SEE NOTE 5)

5. THE IMPACT ATTENUATOR, TEMPORARY IS NOT REQUIRED WHEN THE TEMPORARY CONCRETE BARRIER WALL IS PROTECTED BY OR IS TIED INTO THE EXISTING GUARDRAIL. IF OFFSET IS LESS THAN 5 FEET USE "TRAFFIC BARRIER TERMINAL, TYPE III, TEMPORARY" DEVICE TO MEET NCHRP350 FOR POSTED SPEED.
6. AUTHORIZATION FROM THE DISTRICT'S BUREAU OF TRAFFIC IS REQUIRED FOR ALL FREEWAY CLOSURES.
7. THE FLAGGER AND FLAGGER SIGN ARE REQUIRED AT THE ABOVE WORK SITES WHEN:
 - a. FOUR OR MORE WORK VEHICLES ENTER THE TRAFFIC LANES IN A ONE HOUR PERIOD.
 - b. THE WORK ACTIVITY REQUIRES FREQUENT ENCR OACHMENT INTO THE LANE OPEN TO TRAFFIC.
 THE FLAGGER SHALL BE STATIONED APPROXIMATELY 100' (30 m) TO 200' (60 m) IN ADVANCE OF THE WORKERS.

ALL DIMENSIONS ARE IN INCHES (MILLIMETERS) UNLESS OTHERWISE SHOWN.

REVISIONS	
NAME	DATE
DWS	11/96
JAF	12/02
NCHRP 350	04/03
JAF	2/06
SPB	1/07

ILLINOIS DEPARTMENT OF TRANSPORTATION
TRAFFIC CONTROL DETAILS FOR FREEWAY SHOULDER CLOSURES PARTIAL RAMP CLOSURES

DESIGNED BY: DWS
 DRAWN BY:
 CHECKED BY:
 SCALE: NONE
 TC-17