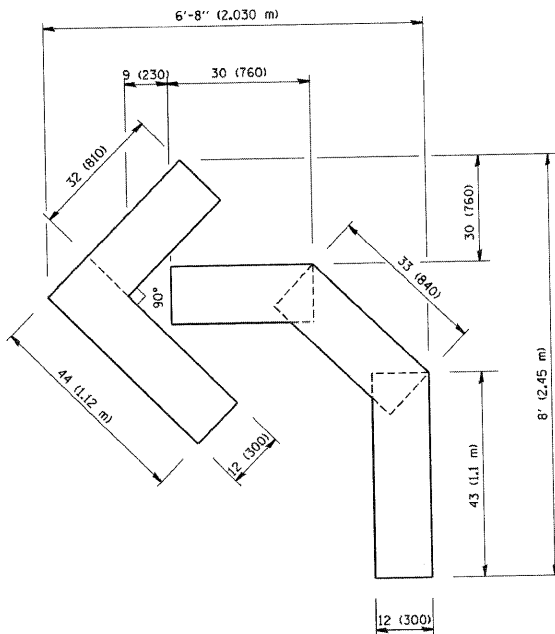
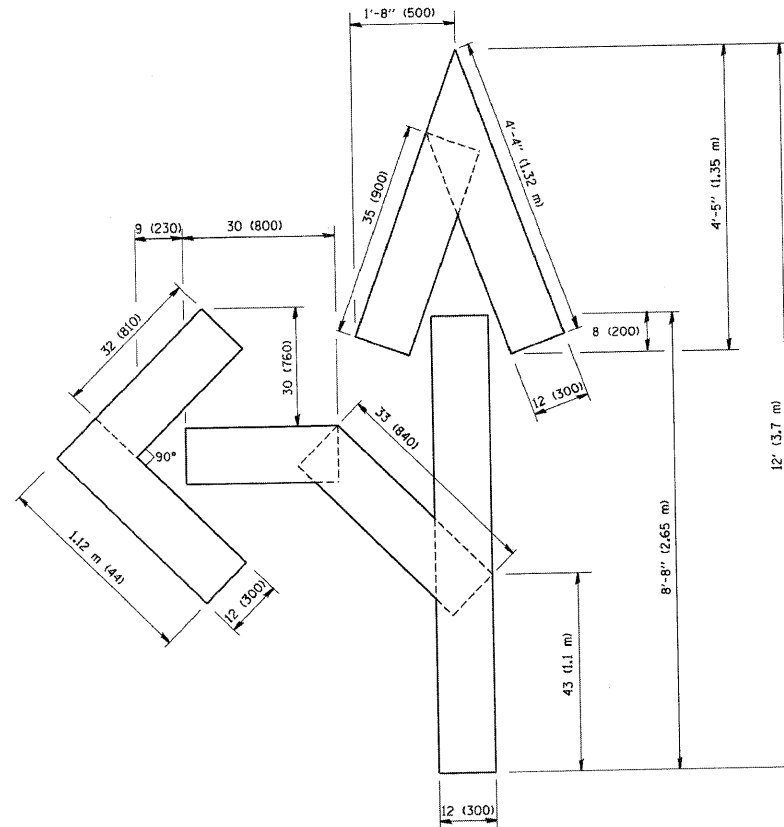


QUANTITY
 4 (100) LINE = 64.1 ft. (19.7 m)
 21.1 sq. ft. (1.97 sq. m)



QUANTITY
 4 (100) LINE = 45.5 ft. (13.9 m)
 15.2 sq. ft. (1.39 sq. m)



QUANTITY
 4 (100) LINE = 82.5 ft. (25.3 m)
 27.5 sq. ft. (2.53 sq. m)

All dimensions are in inches (millimeters) unless otherwise shown.

DISTRICT ONE TYPICAL PAVEMENT MARKINGS

LOWCO, INC.
 CONSULTING ENGINEERS
 1560 WALL ST, SUITE 222
 NAPERVILLE, ILLINOIS 60563 PH: (630) 577-9100

USER NAME = #USER#	DESIGNED - MJY	REVISED -
PLT SCALE = #SCALE#	DRAWN - ST	REVISED -
PLT DATE = #DATE#	CHECKED - MJY	REVISED -
	DATE - 07/08/2009	REVISED -

STATE OF ILLINOIS
 DEPARTMENT OF TRANSPORTATION

DISTRICT ONE DETAIL SHEETS
 I-55 WEST FRONTAGE ROAD OVER (I & M) CANAL

SCALE: NONE SHEET NO. 37 OF 38 SHEETS STA. 1097+00 TO STA. 1101+50

36 NOT USED

F.A.I. RTE.	SECTION	COUNTY	TOTAL SHEETS	SHEET NO.
55	86 B-3-R	WILL	38	37
D-91-097-09			CONTRACT NO. 60F53	
FED. ROAD DIST. NO.			ILLINOIS FED. AID PROJECT	