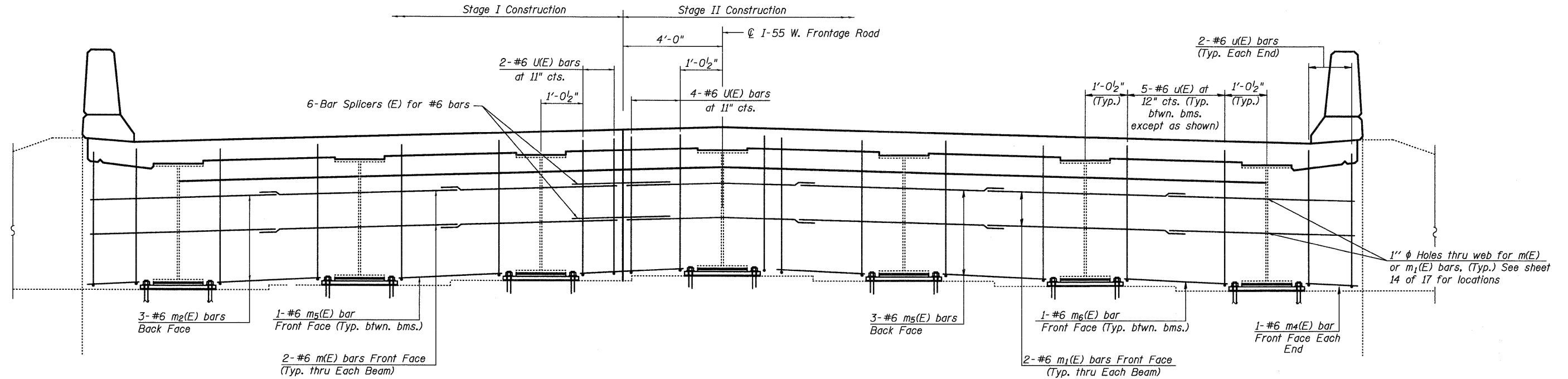


STATE OF ILLINOIS
DEPARTMENT OF TRANSPORTATION

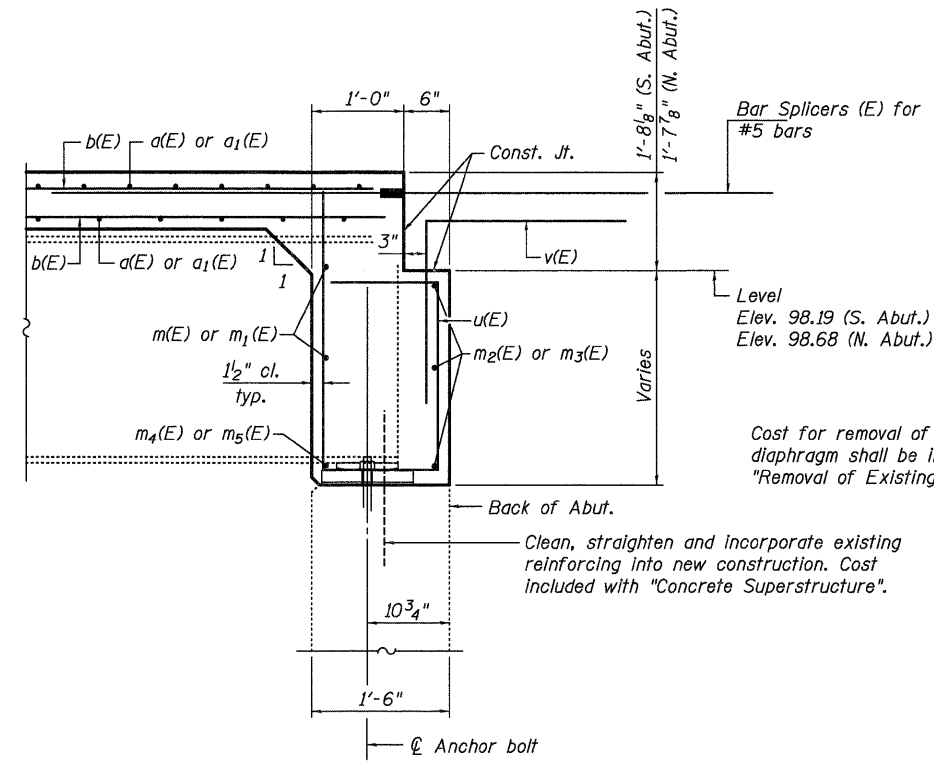


DIAPHRAGM ELEVATION AT ABUTMENT

(North Abutment shown, South Abutment similar by 180° rotation)

Notes:
Reinforcement bars in diaphragm are billed with superstructure on sheet 10 of 17.
Concrete in diaphragm is included with Concrete Superstructure on sheet 10 of 17.
For details of bars u(E) & v(E) see sheet 10 of 17.
The u(E) bar shall be placed parallel to the beams. Spacing for these bars shall be at right angles to the beams.

MIN. BAR LAP
#6 bar = 2'-9"



SECTION A-A

DIAPHRAGM DETAILS
INTERSTATE 55 W. FRONTAGE ROAD
OVER I & M CANAL & STATE TRAIL
F.A.I. ROUTE 55 - SECTION 86B-3-R
WILL COUNTY
STRUCTURE NO. 099-0036
PUBLIC WATERS

DESIGNED - SDS
CHECKED - CWC
DRAWN - DLH
CHECKED - SDS/CEH

WHKS & CO.
ENGINEERING
7018 KINGSMILL CT.,
SPRINGFIELD, IL
(217) 483-9457
DESIGN FIRM #184001036

SHEET NO. 11 17 SHEETS	F.A.I. RTE.	SECTION	COUNTY	TOTAL SHEETS	SHEET NO.
	55	86B-3-R	WILL	38	24
	S.N. 099-0036			CONTRACT NO. 60F53	
FED. ROAD DIST. NO.		ILLINOIS FED. AID PROJECT			