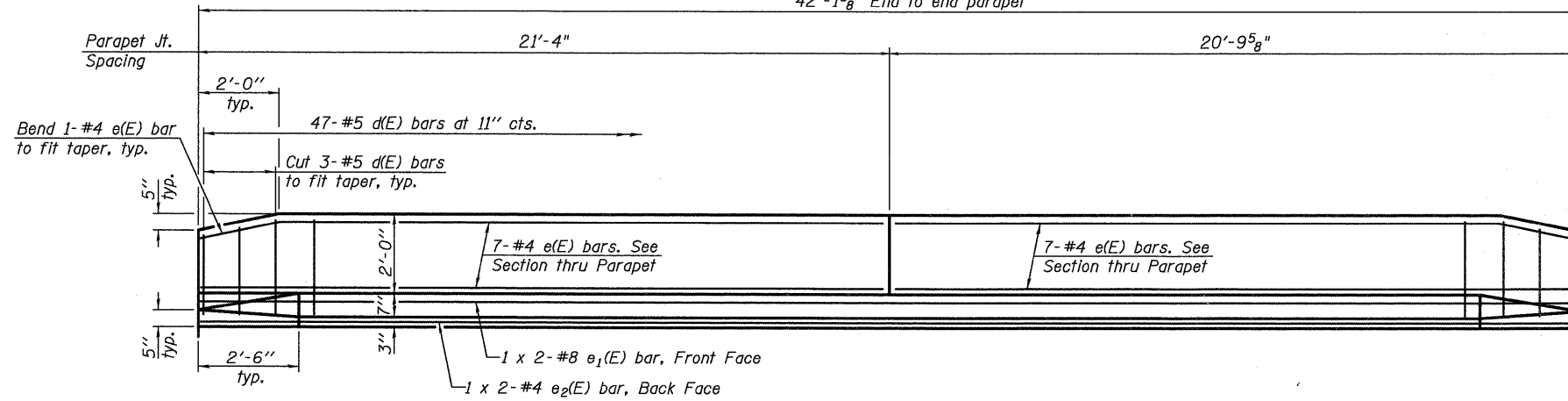


STATE OF ILLINOIS
DEPARTMENT OF TRANSPORTATION

42'-1⁵/₈" End to end parapet



**SUPERSTRUCTURE
BILL OF MATERIAL**

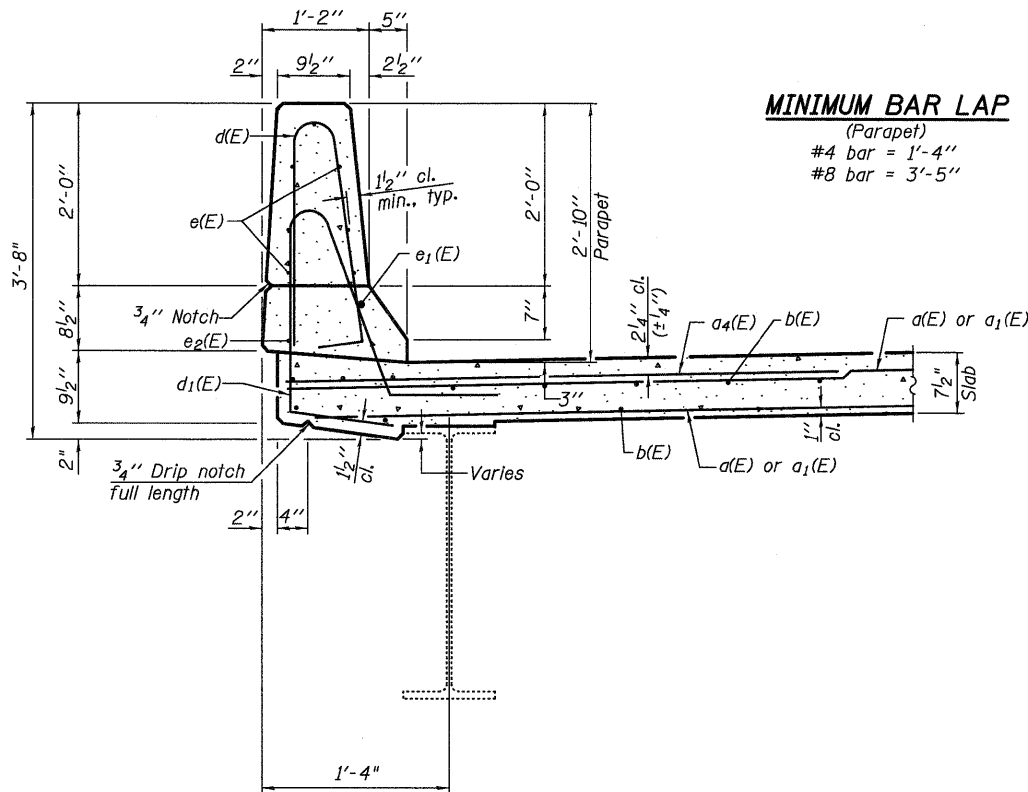
Bar	No.	Size	Length	Shape
a(E)	130	#5	15'-0"	—
a ₁ (E)	130	#5	23'-0"	—
a ₂ (E)	4	#5	16'-9"	—
a ₃ (E)	4	#5	25'-6"	—
a ₄ (E)	70	#6	6'-0"	—
b(E)	82	#5	41'-10"	—
d(E)	94	#5	5'-7"	⊥
d ₁ (E)	92	#5	6'-2"	⊥
e(E)	28	#4	20'-7"	—
e ₁ (E)	4	#8	22'-8"	—
e ₂ (E)	4	#4	21'-7"	—
m(E)	12	#6	7'-4"	—
m ₁ (E)	16	#6	8'-5"	—
m ₂ (E)	6	#6	16'-9"	—
m ₃ (E)	6	#6	25'-6"	—
m ₄ (E)	4	#6	1'-1"	—
m ₅ (E)	12	#6	5'-2"	—
u(E)	70	#6	6'-8"	⊥
v(E)	76	#5	3'-4"	⊥
Reinforcement Bars, Epoxy Coated			Pound	13,140
Concrete Superstructure			Cu. Yds.	60.6

Bars indicated thus 1 x 2 - #5 etc. indicates 1 line of bars with 2 lengths per line.

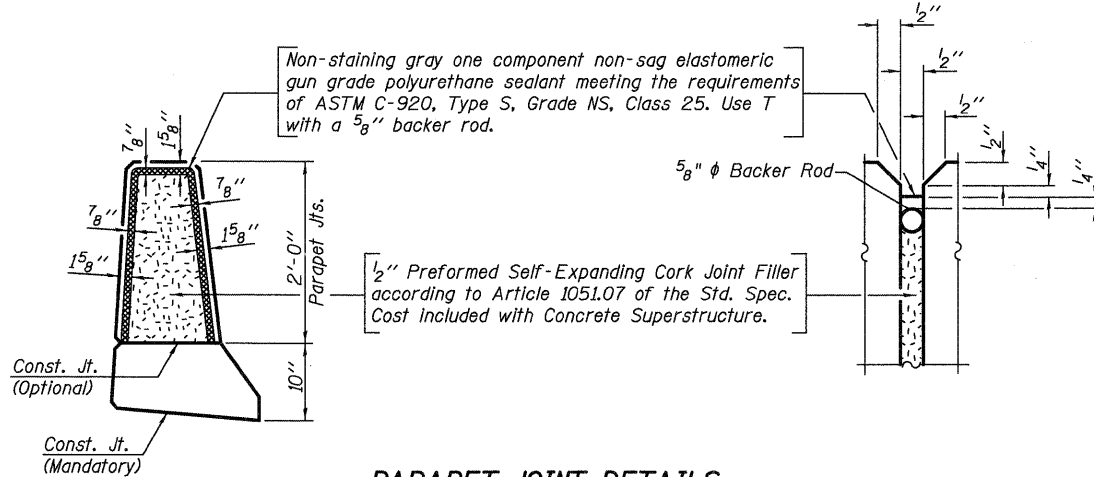
INSIDE ELEVATION OF PARAPET

MINIMUM BAR LAP

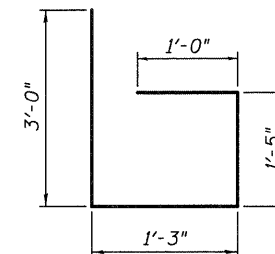
(Parapet)
#4 bar = 1'-4"
#8 bar = 3'-5"



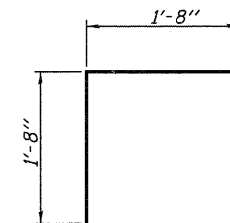
SECTION THRU PARAPET



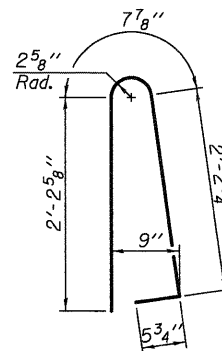
PARAPET JOINT DETAILS



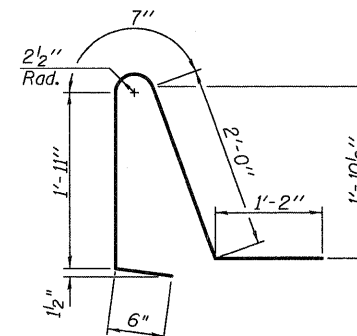
BAR u(E)



BAR v(E)



BAR d(E)



BAR d₁(E)

SUPERSTRUCTURE DETAILS
INTERSTATE 55 W. FRONTAGE ROAD
OVER I & M CANAL & STATE TRAIL
F.A.I. ROUTE 55 - SECTION 86B-3-R
WILL COUNTY
STRUCTURE NO. 099-0036
PUBLIC WATERS

DESIGNED - SDS
CHECKED - CWC
DRAWN - DLH
CHECKED - SDS/CEH

WHKS & CO.
ENGINEERING
7018 KINGSMILL CT.,
SPRINGFIELD, IL
(217) 483-9457
DESIGN FIRM #184001036

SHEET NO. 10 17 SHEETS	F.A.I. RTE.	SECTION	COUNTY	TOTAL SHEETS	SHEET NO.
	55	86B-3-R	WILL	38	23
	S.N. 099-0036			CONTRACT NO. 60F53	
FED. ROAD DIST. NO.		ILLINOIS FED. AID PROJECT			