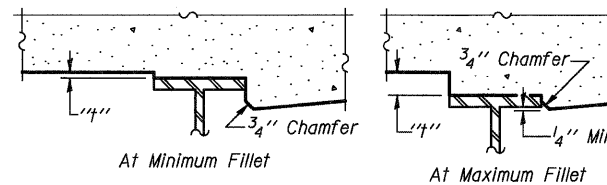


Operator: dheberling

Date: 9/9/2009 3:16:20 PM

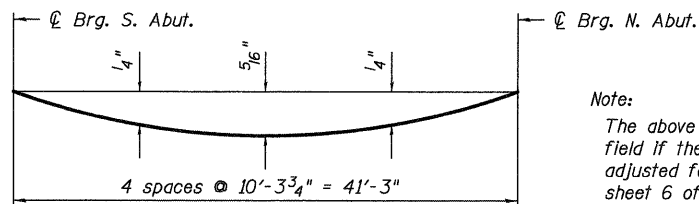
Filename: L:\Jobs\LONCOY028.2\CADD\CADD Drawings\0990346-60F53.dgn

STATE OF ILLINOIS  
DEPARTMENT OF TRANSPORTATION



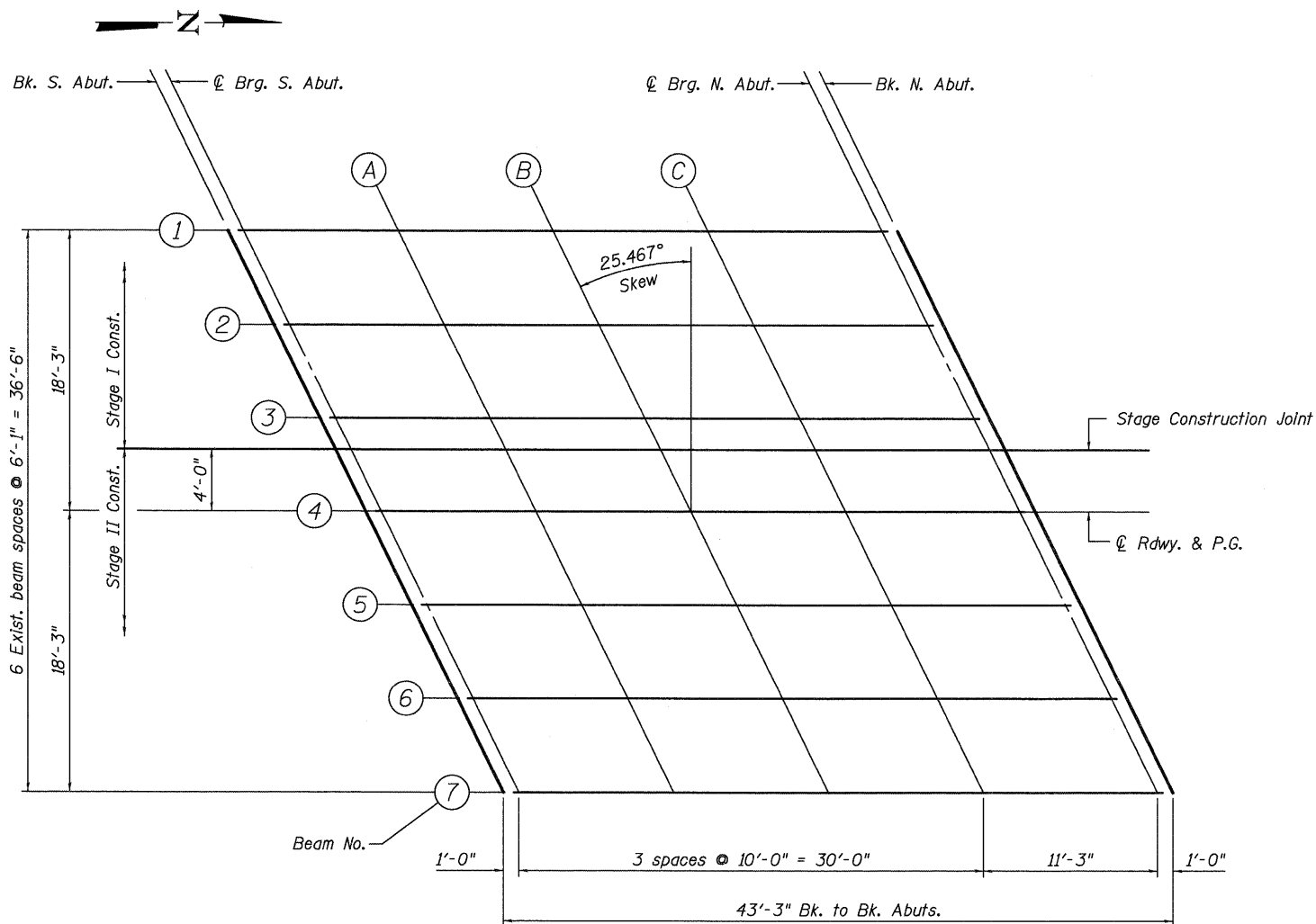
**FILLET HEIGHTS**

To determine "t": After all structural steel has been erected, elevations of the top flanges of the beams shall be taken at the intervals shown below. These elevations subtracted from the "Theoretical Grade Elevations Adjusted for Dead Load Deflection" shown on sheet 6 of 17, minus slab thickness, equals the fillet heights "t" above top flange of beams.



**DEAD LOAD DEFLECTION DIAGRAM**  
(Includes weight of concrete only.)

Note:  
The above deflections are not to be used in the field if the Engineer is working from the grade elevations adjusted for dead load deflections as shown on sheet 6 of 17.



**PLAN**

**TOP OF SLAB ELEVATIONS**  
**INTERSTATE 55 W. FRONTAGE ROAD**  
**OVER I & M CANAL & STATE TRAIL**  
**F.A.I. ROUTE 55 - SECTION 86B-3-R**  
**WILL COUNTY**  
**STRUCTURE NO. 099-0036**  
**PUBLIC WATERS**

DESIGNED - SDS
CHECKED - CWC
DRAWN - DLH
CHECKED - SDS/CEH

**WHKS & CO.**  
**ENGINEERING**  
7018 KINGSMILL CT.,  
SPRINGFIELD, IL  
(217) 483-9457  
DESIGN FIRM #184001036

SHEET NO. 5 17 SHEETS	F.A.I. RTE. 55	SECTION 86B-3-R	COUNTY WILL	TOTAL SHEETS 38	SHEET NO. 18
	S.N. 099-0036		CONTRACT NO. 60F53		
FED. ROAD DIST. NO.		ILLINOIS FED. AID PROJECT			