

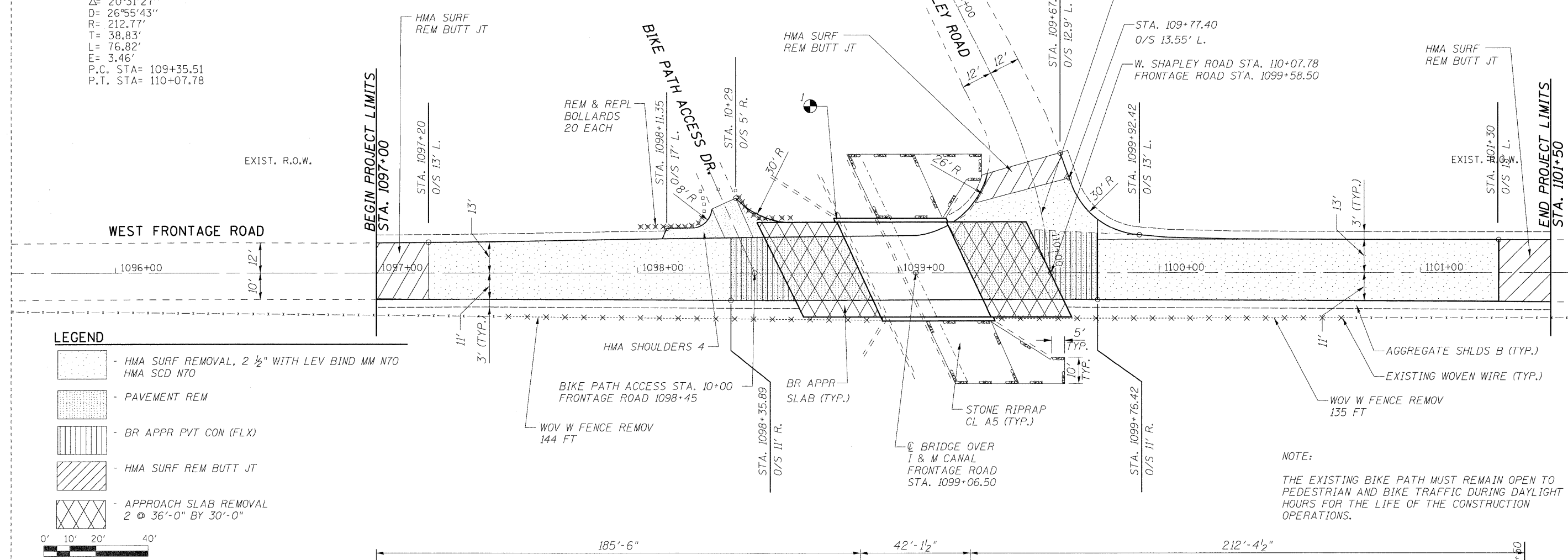
CURVE C1  
 P.I. STA= 109+30.60  
 $\Delta = 20^{\circ}31'27''$   
 $D = 26^{\circ}55'43''$   
 $R = 212.77'$   
 $T = 38.83'$   
 $L = 76.82'$   
 $E = 3.46'$   
 P.C. STA= 109+35.51  
 P.T. STA= 110+07.78

NOTE:

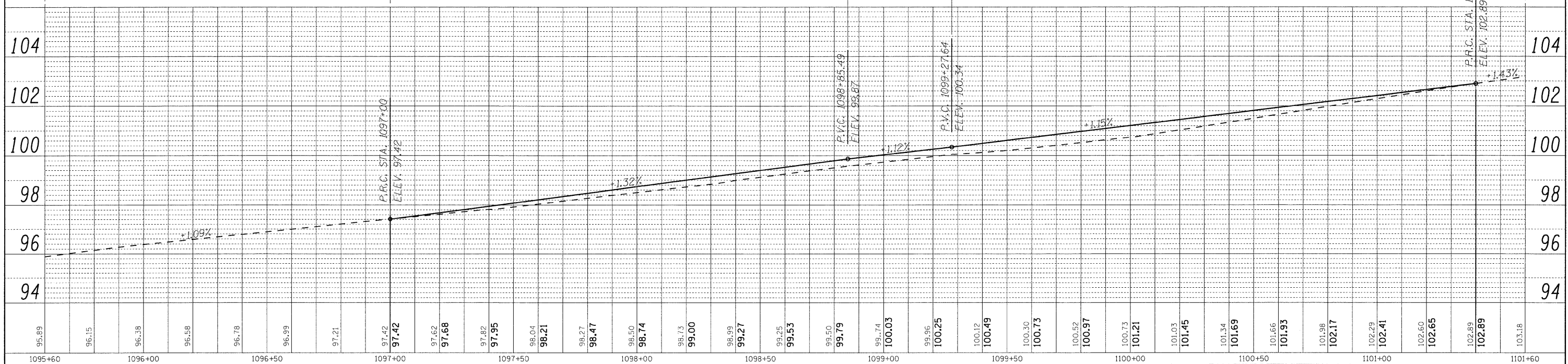
BENCHMARK #1 - CUT "□" IN TOP OF SOUTHWEST WINGWALL  
 ASSUMED ELEVATION = 100.00'

PLAN	SURVEYED	DATE
	ALIGNED	BY
	CHECKED	
	RT. OF WAY CHECKED	
	NO. CAD FILE NAME	

PROFILE	SURVEYED	DATE
	GRADES CHECKED	BY
	BLM. NOTED	
	STRUCTURE NOTATIONS CRPD	
	NO.	



NOTE:  
 THE EXISTING BIKE PATH MUST REMAIN OPEN TO PEDESTRIAN AND BIKE TRAFFIC DURING DAYLIGHT HOURS FOR THE LIFE OF THE CONSTRUCTION OPERATIONS.



DESIGNED	- MJY	REVISED	-
DRAWN	- ST	REVISED	-
CHECKED	- MJY	REVISED	-
DATE	- 09/09/2009	REVISED	-

STATE OF ILLINOIS  
 DEPARTMENT OF TRANSPORTATION

PLAN AND PROFILE  
 I-55 WEST FRONTAGE ROAD OVER (I & M) CANAL  
 SCALE: 1" = 20'    SHEET NO. 9 OF 38 SHEETS    STA. 1097+00 TO STA. 1101+50

F.A.I. RTE.	SECTION	COUNTY	TOTAL SHEETS	SHEET NO.
55	86 B-3-R	WILL	38	9
D-91-097-09		CONTRACT NO. 60F53		
FED. ROAD DIST. NO.		ILLINOIS FED. AID PROJECT		