

F.A.I. RTE.	SECTION	COUNTY	TOTAL SHEETS	SHEET NO.
55	86 B-3-R	WILL	36	1
FED. ROAD DIST. NO.		ILLINOIS	CONTRACT NO. 60F53	

D-91-097-09 38-1-37

IMPROVEMENT LOCATED IN THE VILLAGE OF CHANNAHON

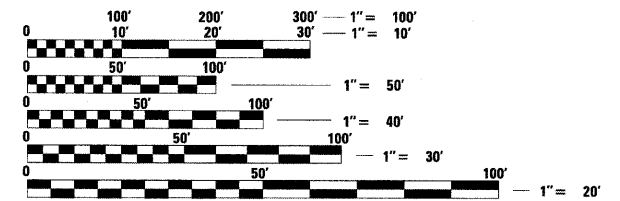
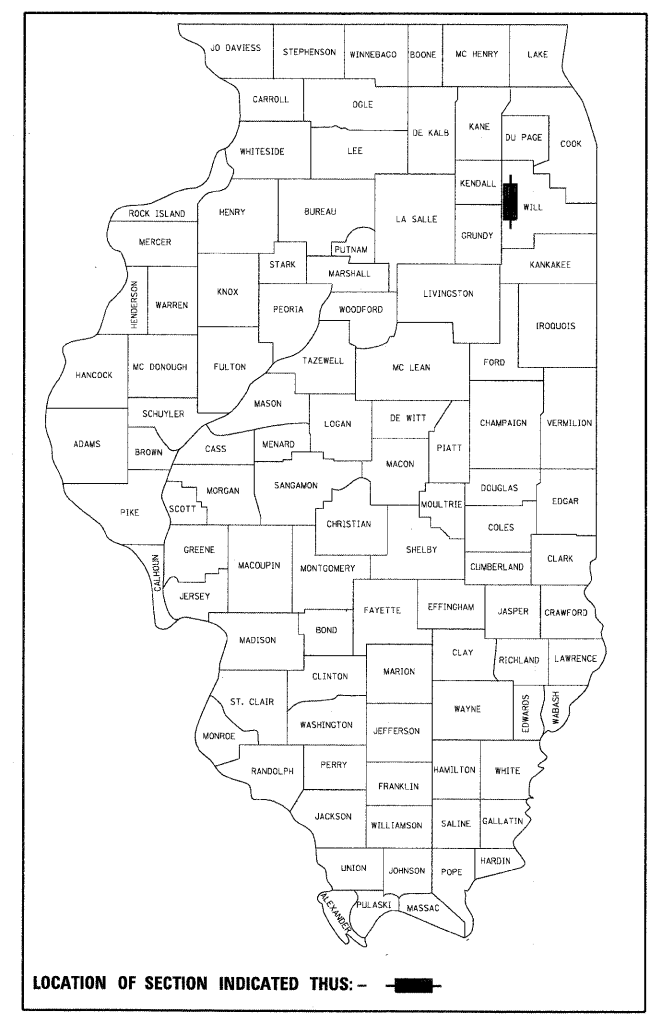
STATE OF ILLINOIS
DEPARTMENT OF TRANSPORTATION
DIVISION OF HIGHWAYS
**PLANS FOR PROPOSED
FEDERAL AID HIGHWAY**
I-55 WEST FRONTAGE ROAD
OVER THE ILLINOIS & MICHIGAN (I & M) CANAL

FOR INDEX OF SHEETS, SEE SHEET NO. 2

ADT 2000 (2008)
SPEED LIMIT 45 MPH

SECTION: 86 B-3-R
PROJECT: ACBHI-055-6(233)249
BRIDGE REHAB &
SUPERSTRUCTURE REPLACEMENT

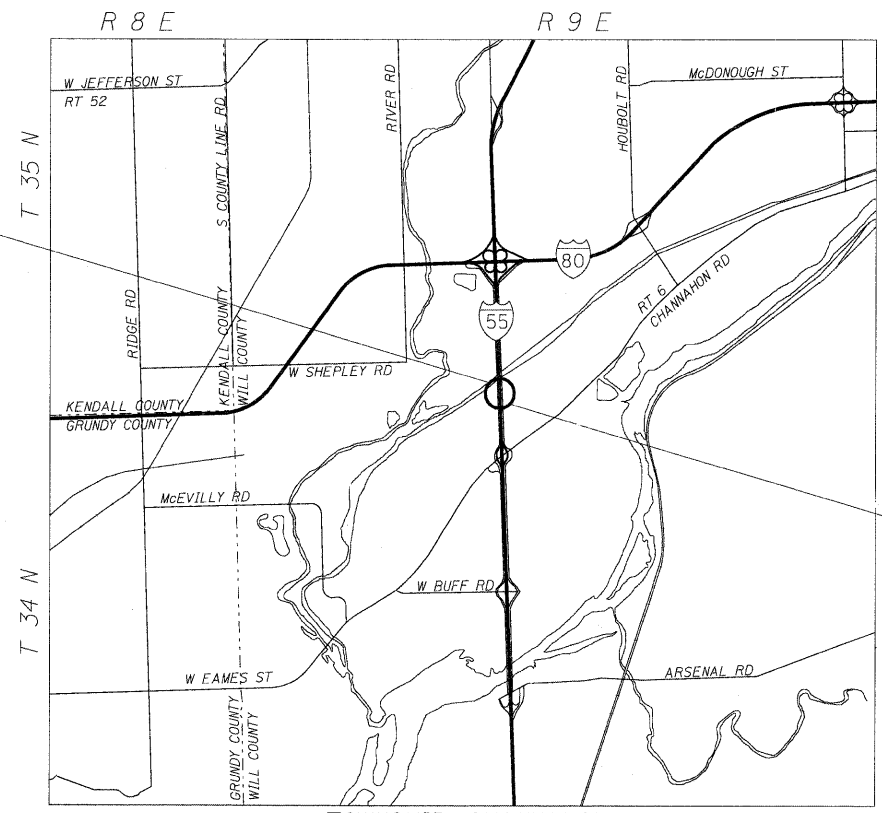
WILL COUNTY
C-91-097-09



FULL SIZE PLANS HAVE BEEN PREPARED USING STANDARD ENGINEERING SCALES. REDUCED SIZED PLANS WILL NOT CONFORM TO STANDARD SCALES. IN MAKING MEASUREMENTS ON REDUCED PLANS, THE ABOVE SCALES MAY BE USED.

J.U.L.I.E.
JOINT UTILITY LOCATION INFORMATION FOR EXCAVATION
1-800-892-0123
OR 811

PROJECT
BEGINS
STA. 1097+00



PROJECT
ENDS
STA. 1101+50

PROJECT MANAGER: KIM HARVEY (847) 705-4055
PROJECT ENGINEER: ERSKINE W. KLYCE (847) 705-4594

CONTRACT NO. 60F53

LOCATION SKETCH
NET AND GROSS LENGTH OF PROJECT = 450' = 0.085 MI

STATE OF ILLINOIS
DEPARTMENT OF TRANSPORTATION
DIVISION OF HIGHWAYS

SUBMITTED June 24 20 09

D. O. [Signature]
DEPUTY DIRECTOR OF HIGHWAYS, REGION ENGINEER

October 2, 20 09
Charles J. Ingersoll [Signature]
ENGINEER OF DESIGN AND ENVIRONMENT

October 2, 20 09
Christine M. Reed [Signature]
DIRECTOR OF HIGHWAYS, CHIEF ENGINEER

PRINTED BY THE AUTHORITY
OF THE STATE OF ILLINOIS

LONCO, INC.
CONSULTING ENGINEERS
1560 WALL ST., SUITE 222
NAPERVILLE, ILLINOIS 60563 PH: (630) 577-9100



W. Klyce
Expires 11-30-09