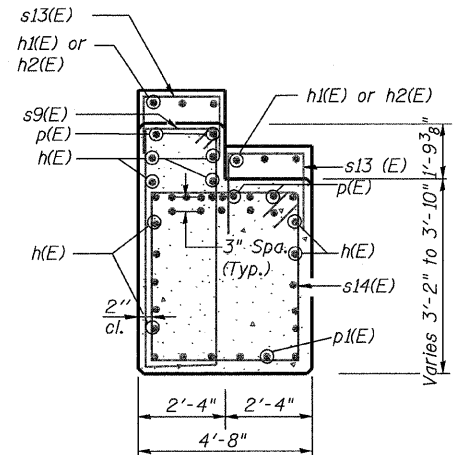


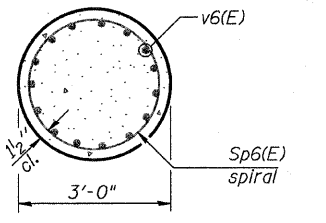
F.A.P.	SECTION	COUNTY	TOTAL SHEETS	SHEET NO.
330	465 VB-R-1	COOK	103	70
STA. 173+50 TO STA. 195+00				
FED. ROAD DIST. NO. 7 ILLINOIS FED. AID PROJECT				
Contract # 60407			SHEET NO. S37 of S60	

PILE DATA

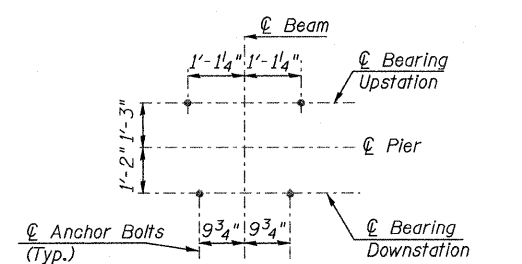
Type: HP 14x73
 Nominal Req'd Bearing: 578 Kip
 Allowable Resistance: 192 Kip
 Est. Length 50'
 No. Production Piles: 35
 No. Test Piles: 1



SEC. K-K



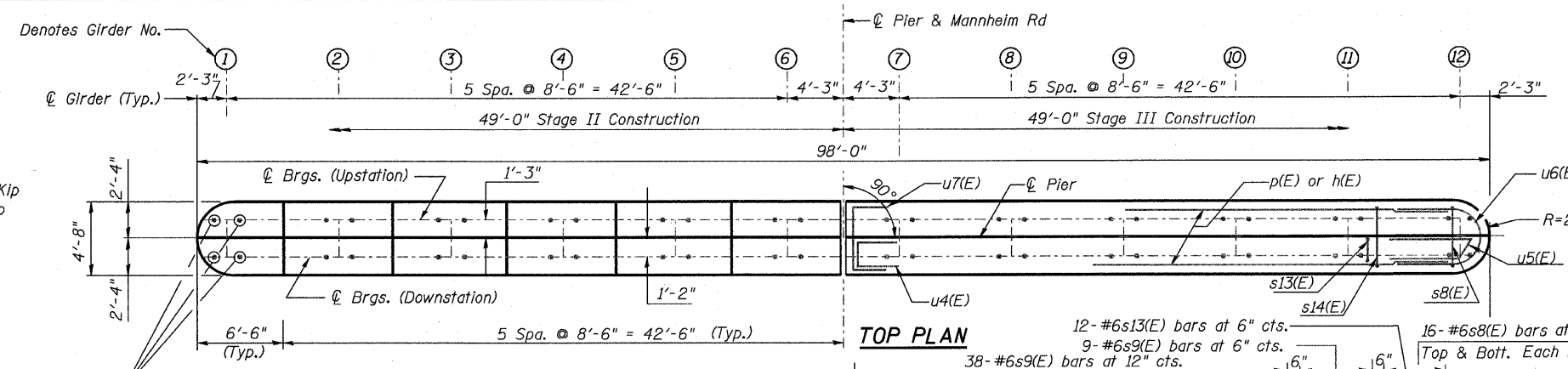
SEC. L-L



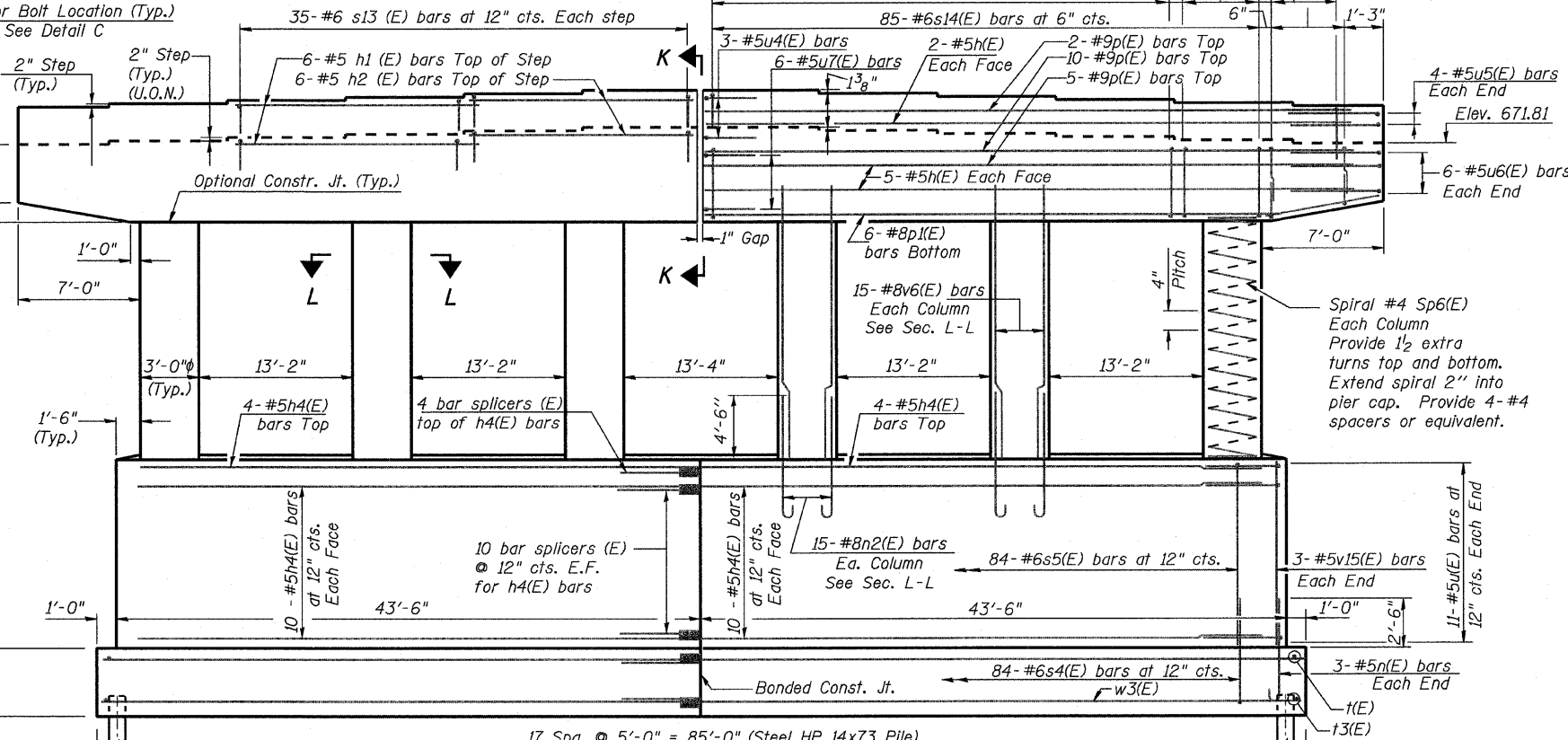
DETAIL 'C'
BEARING ANCHOR BOLTS LOCATION

Notes:

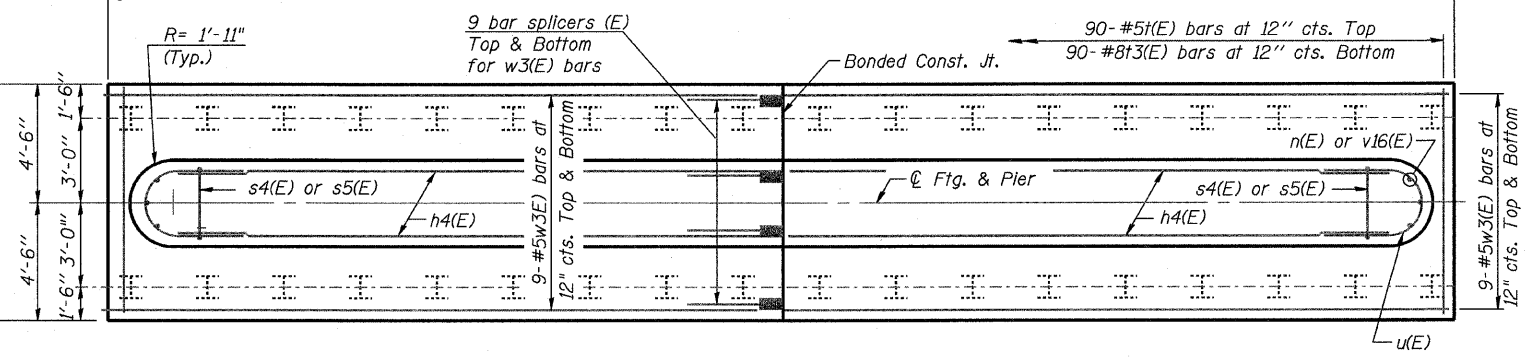
- Space reinforcement in cap to miss anchor bolts. Pour steps monolithically with cap.
 - Pier cap reinforcement is the same on both sides of 1" gap. See Sheet S42 for bill of material & Sheet S43 for details.
- Min. Lap Splice
 #5 = 1'-8"
 #8 = 4'-6"
 #10 = 7'-3"



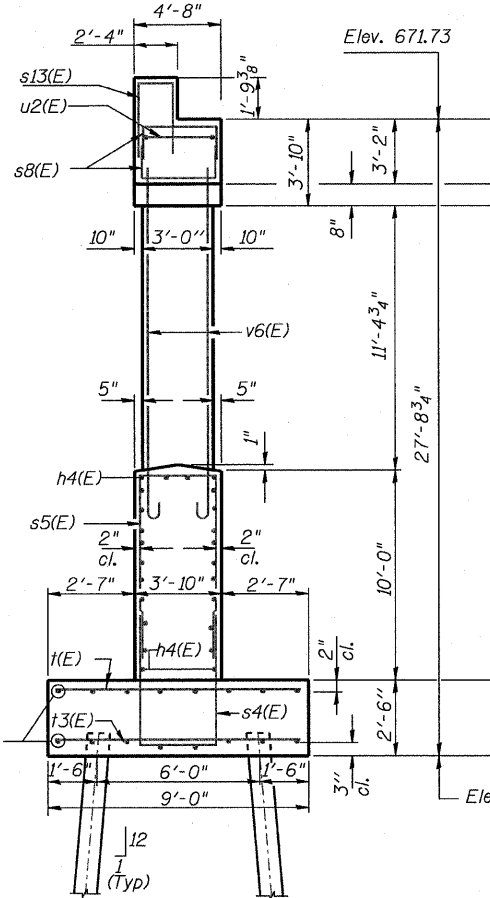
TOP PLAN



ELEVATION
(Looking Upstation)



FOOTING PLAN



END VIEW

REVISIONS		ILLINOIS DEPARTMENT OF TRANSPORTATION	
NAME	DATE	PIER 6	
		FAP 330 US 12/45 (MANNHEIM RD.) OVER 500 LINE RR & FRANKLIN AVE. STRUCTURE NO. 016-2815	
		SECTION 465 VB-R-1 STA. 183+33.30	
		COOK COUNTY DRAWN BY JHR CHECKED BY OPY	
		DATE 7/2009	

EARTH TECH | AECOM