

11-5-2021 LETTING ITEM 057

STATE OF ILLINOIS
DEPARTMENT OF TRANSPORTATION

F.A. RTE.	SECTION	COUNTY	TOTAL SHEETS	SHEET NO.
FAI 72	D7 BRIDGE REPAIRS 2022-2	MACON	15	1
		ILLINOIS	CONTRACT NO. 74996	

FOR INDEX OF SHEETS, SEE SHEET NO. 2

ADT = 7000 (I72, US51 2019)

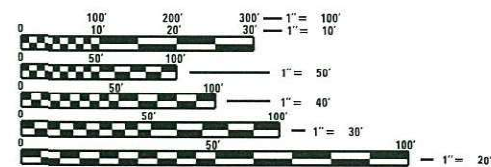
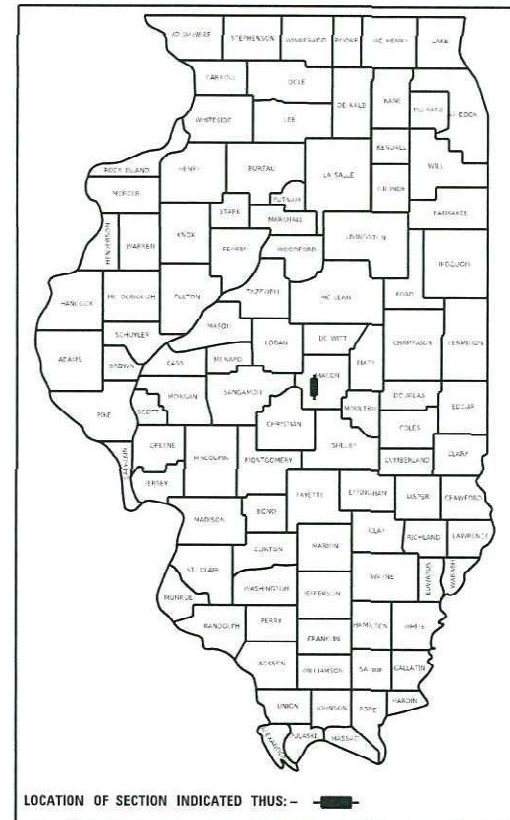
ADT = 700 (WYCKLES RD CH41 2020)

PROPOSED HIGHWAY PLANS

FAI 72 (I72, US51)
D7 BRIDGE REPAIRS 2022-2
PROJECT NHPP-XNJ2(691)
BRIDGE REPAIR
MACON COUNTY

C-97-081-20

P-97-075-20



FULL SIZE PLANS HAVE BEEN PREPARED USING STANDARD ENGINEERING SCALES. REDUCED SIZED PLANS WILL NOT CONFORM TO STANDARD SCALES. IN MAKING MEASUREMENTS ON REDUCED PLANS, THE ABOVE SCALES MAY BE USED.

J.U.L.I.E.
JOINT UTILITY LOCATION INFORMATION FOR EXCAVATORS
1-800-892-0123
OR 811



GROSS LENGTH = 382 FT. = 0.072 MILE
NET LENGTH = 382 FT. = 0.072 MILE

PROJECT ENGINEER: DEBRA G. BARRETT
PROJECT MANAGER: AARON J. METTE

CONTRACT NO. 74996

STATE OF ILLINOIS
DEPARTMENT OF TRANSPORTATION

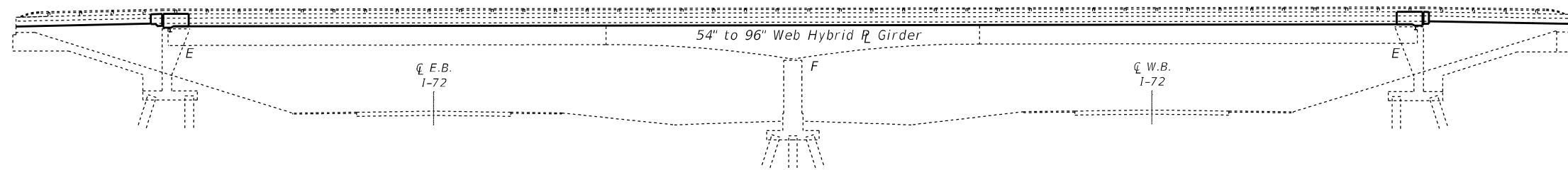
SUBMITTED August 17 20 21
Jeffrey P. Myerls
REGIONAL ENGINEER

October 1 20 21
[Signature]
ENGINEER OF DESIGN AND SURVEILLANCE

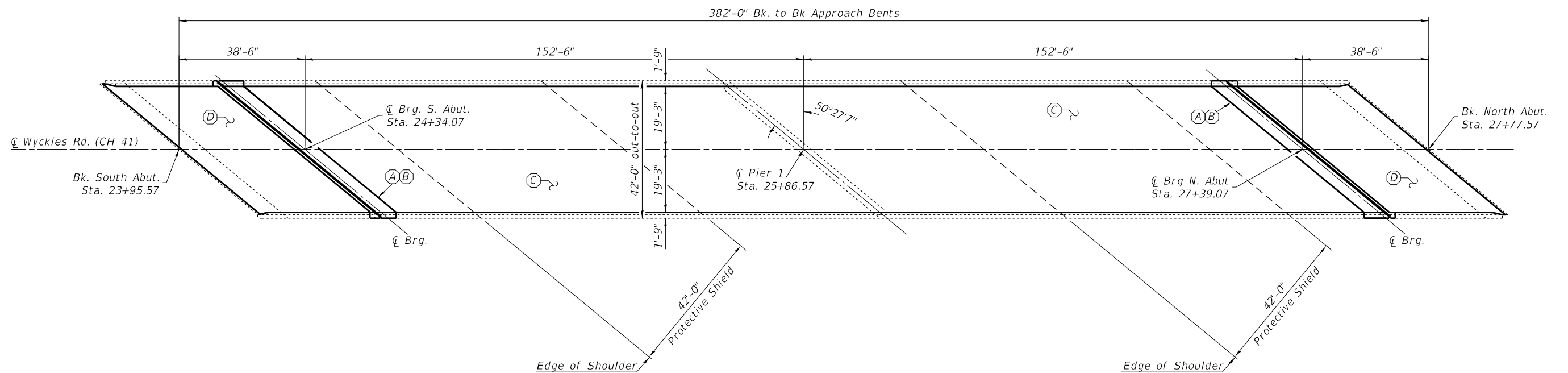
October 1 20 21
[Signature]
DIRECTOR OF HIGHWAYS PROJECT IMPLEMENTATION 2

PRINTED BY THE AUTHORITY
OF THE STATE OF ILLINOIS

EXISTING STRUCTURE: SN 058-0072 was built in 1974 as FAI 72, Section 58-62-1HB. The bridge has two steel plate girder main spans and sand filled vaulted abutments. SN 058-0072 carries Wyckles Rd (CH-41) over I-72, west of Decatur. The proposed project consists of replacement of the expansion joints with new strip seals, bearing replacement at abutments with new elastomeric bearings, structural repair of concrete abutments, HMA surface removal, full depth deck patching, scarification & concrete overlay.



ELEVATION



PLAN



Expires 11-30-2022

David Carl Puzey

- (A) - Remove Existing Neoprene Joint Seal and Install Preformed Strip Seal Expansion Joint
- (B) - Remove Existing Abutment Bearings and Install new Elastomeric Bearings
- (C) - HMA Surface Removal, 1-3/4", Bridge Deck Scarification, 3/4", Deck Patching, & Bridge Deck Fly Ash or GGBF Slag Concrete Overlay, 2-1/2"
- (D) - HMA Surface Removal, 1-3/4", Bridge Deck Scarification, 3/4", & Bridge Deck Fly Ash or GGBF Slag Concrete Overlay, 2-1/2"

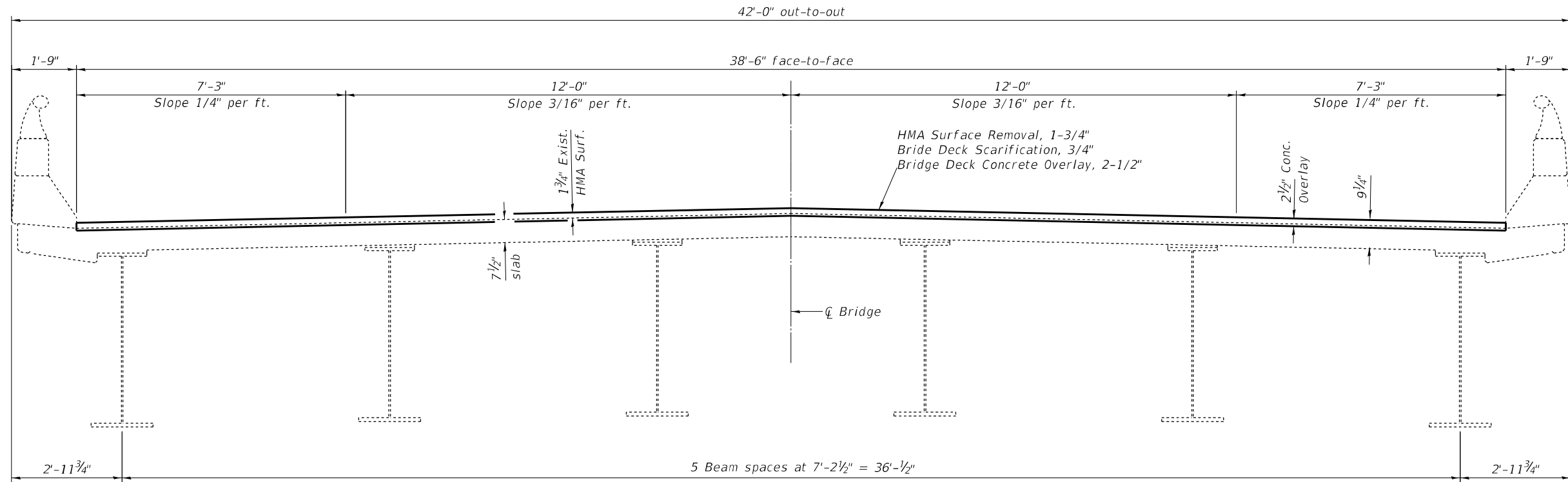
STATE OF ILLINOIS
DEPARTMENT OF TRANSPORTATION

GENERAL PLAN & ELEVATION
S.N. 058-0072

F.A.I. RTE.	SECTION	COUNTY	TOTAL SHEETS	SHEET NO.
72	D7 BRIDGE REPAIRS 2022-2	MACON	15	4
CONTRACT NO. 74996				
ILLINOIS		FED. AID PROJECT		

SCALE: SHEET 1 OF 12 SHEETS STA. TO STA.

MODEL: Default
 FILE: N:\MISC_Plan\Subsect-cw-bead-fy.com\FWIDOT\Documents\DOT Office\Direct_T\Projects\74996\CADD\Bridges\CAD\Drawings\074996-CH-058-0072_Repair_Plan.dgn
 PROJECT: 74996



DECK CROSS SECTION
Looking North

GENERAL NOTES

Plan dimensions and details relative to existing plans are subject to nominal construction variations. The Contractor shall field verify existing dimensions and details affecting new construction and make necessary approved adjustments prior to construction or ordering of materials. Such variations shall not be cause for additional compensation for a change in scope of the work, however, the Contractor will be paid for the quantity actually furnished at the unit price bid for the work.

Reinforcement Bars designated (E) shall be epoxy coated.

Existing reinforcement bars extending into the removal area shall be cleaned, straightened and incorporated into the new construction. Any reinforcement bars that are damaged during concrete removal operations shall be replaced with an approved bar splicer or anchorage system. Cost included with CONCRETE REMOVAL.

Joint openings shall be adjusted according to Article 520.04 of the Standard Specifications when the deck is poured at an ambient temperature other than 50 °F.

Removal and reinstallation of the handrail sections and support posts at both abutments will be necessary for construction of the expansion joints and parapet repair. The existing handrail sections and support posts shall be reused. New bolts, shim plates and post support anchor assemblies, as detailed in the plans, are to be provided and installed for the replacement of the handrail sections. This work and all materials shall be included in the contract unit price for CONCRETE SUPERSTRUCTURE.

Protective Coat to be applied to areas of new concrete only, including bridge deck concrete overlay.

Prior to pouring the new concrete deck, all heavy or loose rust, loose mill scale, and other loose or potentially detrimental foreign material shall be removed from the surfaces in contact with concrete. Tightly adhered paint may remain unless otherwise noted. Removal shall be accomplished by methods that will not damage the steel and the cost will be included in the pay item covering removal of the existing concrete.

Areas of deck repairs shown are estimated. The Engineer shall show actual locations of deck repairs on as-built plans.

Full depth deck slab repairs performed in the exterior bays of the bridge deck (between the parapet walls and the first interior beams) shall be limited to individual lengths no greater than 10'. In these portions of the deck, repair areas longer than 10' shall be divided into segments not greater than 10' in length, and the segments shall be poured in alternating sequence. Subsequent segments repaired in sequence shall not be removed until 72 hours shall have elapsed from the end of the previous, adjacent pour, and the adjacent pour shall have attained a minimum modulus of rupture of 650psi.

All new structural steel and bearing assemblies shall be hot-dip galvanized. See Special Provisions for "Hot Dip Galvanizing for Structural Steel".

TOTAL BILL OF MATERIAL

ITEM	UNIT	QUANTITY
Concrete Removal	Cu. Yd.	24.0
Concrete Superstructure	Cu. Yd.	23.6
Reinforcement Bars, Epoxy Coated	Pound	4,510
Hot-Mix Asphalt Surface Removal, 1-3/4"	Sq. Yd.	1,563
Bridge Deck Grooving	Sq. Yd.	1,545
Bridge Deck Scarification, 3/4"	Sq. Yd.	1,563
Bridge Deck Fly Ash or GGBF Slag Concrete Overlay, 2-1/2"	Sq. Yd.	1,563
Preformed Joint Strip Seal	Foot	126
Protective Coat	Sq. Yd.	1,642
Furnishing & Erecting Structural Steel	Pound	2880
Jack & Remove Existing Bearings	Each	12
Elastomeric Bearing Assembly, Type I	Each	12
Anchor Bolts, 1"Ø	Each	24
Deck Slab Repair (Full Depth, Type I)	Sq. Yd.	44
Deck Slab Repair (Full Depth, Type II)	Sq. Yd.	26
Structural Repair of Concrete (Depth ≤ 5")	Sq. Ft.	205
Protective Shield	Sq. Yd.	616

MODEL: Default
 FILE NAME: p:\ulidect-pw-bead-fy.com\PIV\DOT\Documents\DOT Office\Dir\refr. 7\Project\74996\CADD\Bids\CAD\check\DOT\74996-ct-058-0072 Repair Plans.dgn

USER NAME = steffemk	DESIGNED - T. Walk	REVISED -
	DRAWN - T. Walk	REVISED -
PLOT SCALE = 100,0000' / in.	CHECKED - D. Macklin	REVISED -
PLOT DATE = 8/17/2021	DATE - August 2020	REVISED -

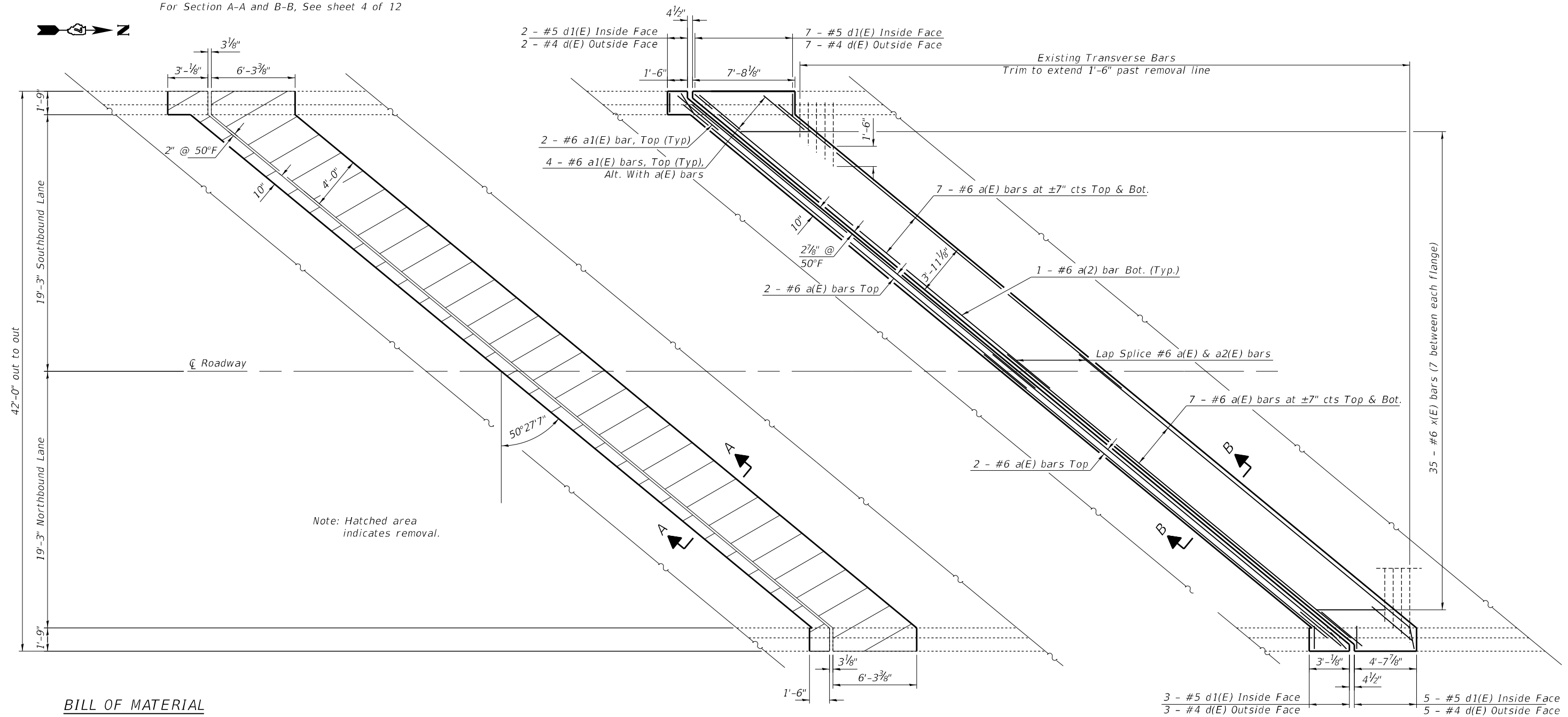
STATE OF ILLINOIS
DEPARTMENT OF TRANSPORTATION

GENERAL NOTES & BILL OF MATERIALS
S.N. 058-0072

SCALE: SHEET 2 OF 12 SHEETS STA. TO STA.

F.A.J RTE.	SECTION	COUNTY	TOTAL SHEETS	SHEET NO.
72	D7 BRIDGE REPAIRS 2022-2	MACON	15	5
ILLINOIS FED. AID PROJECT			CONTRACT NO. 74996	

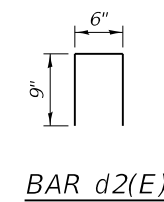
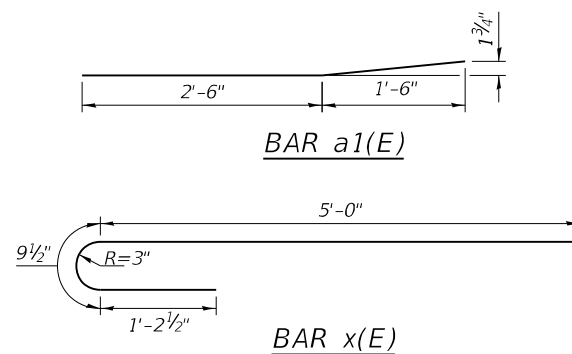
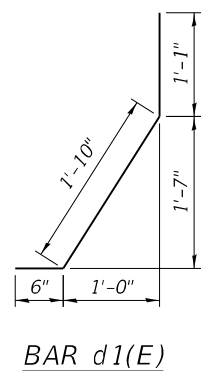
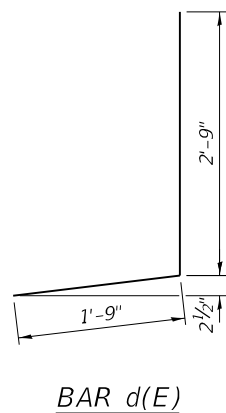
For Section A-A and B-B, See sheet 4 of 12



Note: Hatched area indicates removal.

BILL OF MATERIAL

Bar	No.	Size	Length	Shape
a(E)	64	#6	33'-5"	—
a1(E)	24	#6	4'-0"	—
a2(E)	4	#6	30'-0"	—
d(E)	34	#4	4'-6"	J
d1(E)	34	#5	3'-5"	J
d2(E)	8	#4	2'-0"	Π
x(E)	70	#6	7'-0"	⊔
ITEM	UNIT	QUANTITY		
Concrete Removal	Cu. Yd.	24.0		
Concrete Superstructure	Cu. Yd.	23.6		
Reinforcement Bars, Epoxy Coated	Pound	4,510		



REMOVAL PLAN
South Abutment Shown
North Abutment Similar by Rotation

REINFORCEMENT PLAN
South Abutment Shown
North Abutment Similar by Rotation

MODEL: Default
 FILE NAME: p:\subsect-aw-bead-fy.com\PIV\DOT\Documents\DOT Office\Direct: 7\Projects\74996\CADD\Drawings\CAD\Sheet\074996-RT-058-0072 Repair Plans.dgn
 PLOT SCALE = 100,0000' / in.
 PLOT DATE = 8/17/2021

USER NAME = steffemk	DESIGNED - T. Walk	REVISED -
PLOT SCALE = 100,0000' / in.	DRAWN - T. Walk	REVISED -
PLOT DATE = 8/17/2021	CHECKED - D. Macklin	REVISED -
	DATE - August 2020	REVISED -

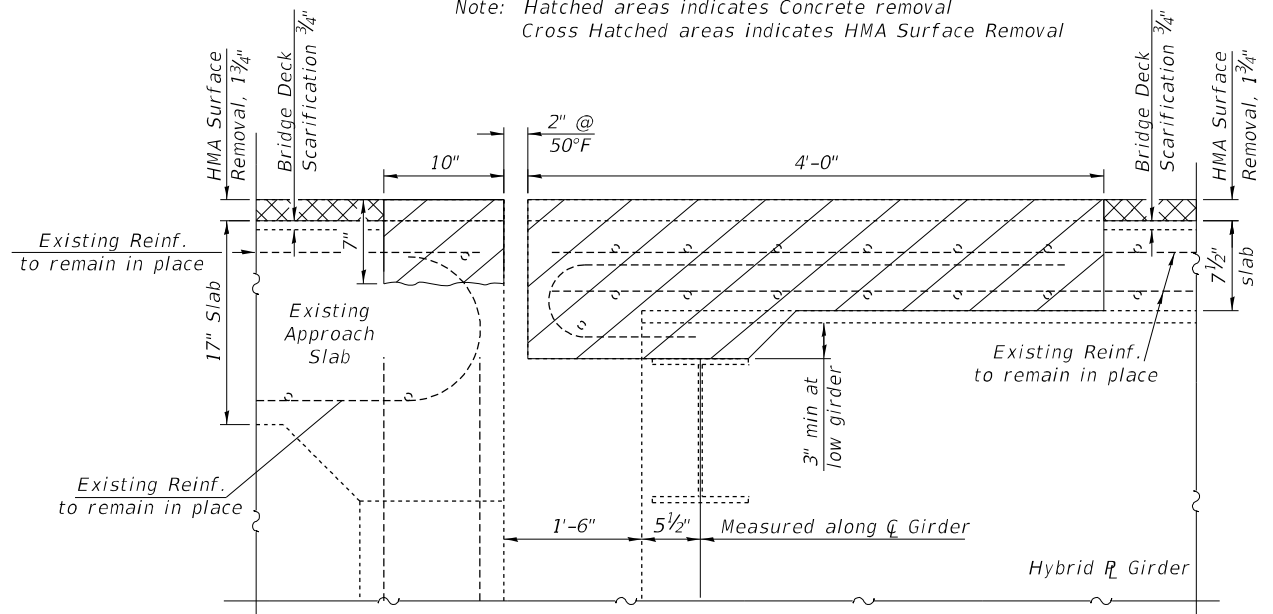
**STATE OF ILLINOIS
DEPARTMENT OF TRANSPORTATION**

**EXPANSION JOINT REPLACEMENT DETAILS
S.N. 058-0072**

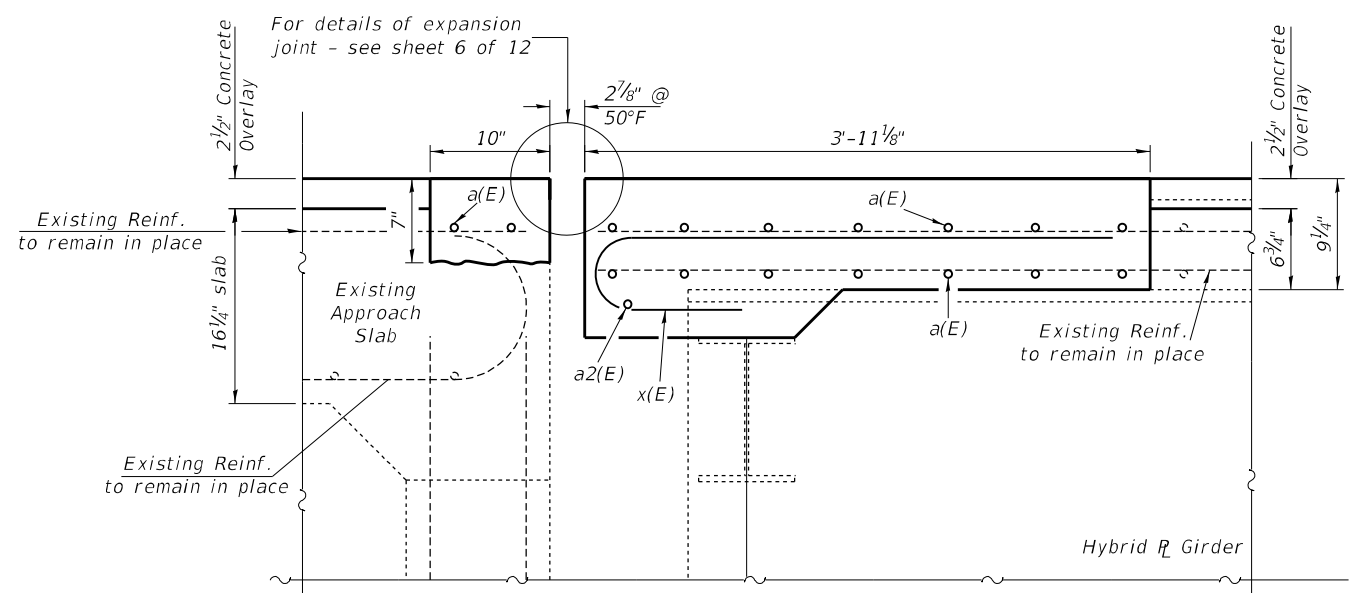
SCALE: SHEET 3 OF 12 SHEETS STA. TO STA.

F.A.J. RTE.	SECTION	COUNTY	TOTAL SHEETS	SHEET NO.
72	D7 BRIDGE REPAIRS 2022-2	MACON	15	6
CONTRACT NO. 74996				
ILLINOIS FED. AID PROJECT				

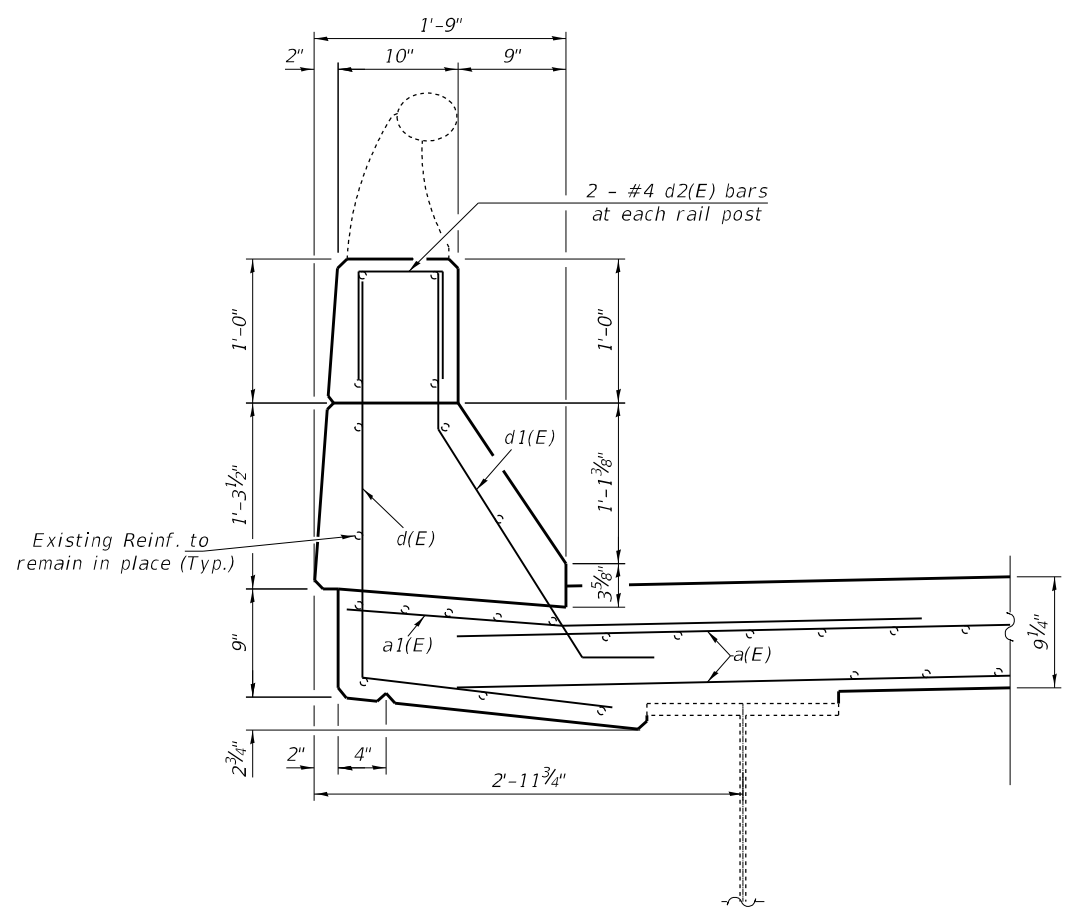
Note: Hatched areas indicates Concrete removal
Cross Hatched areas indicates HMA Surface Removal



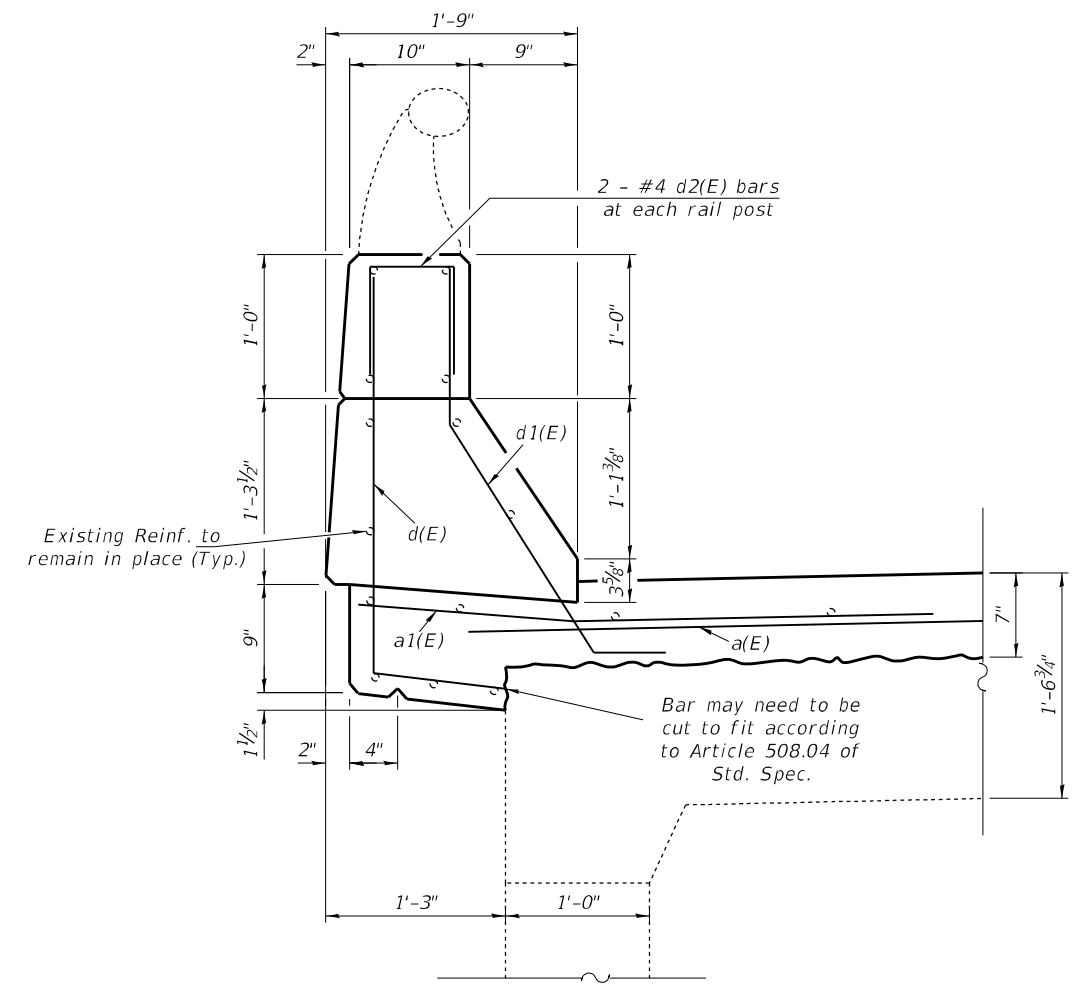
SECTION A-A



SECTION B-B



SECTION THRU DECK PARAPET



SECTION THRU APPROACH PARAPET

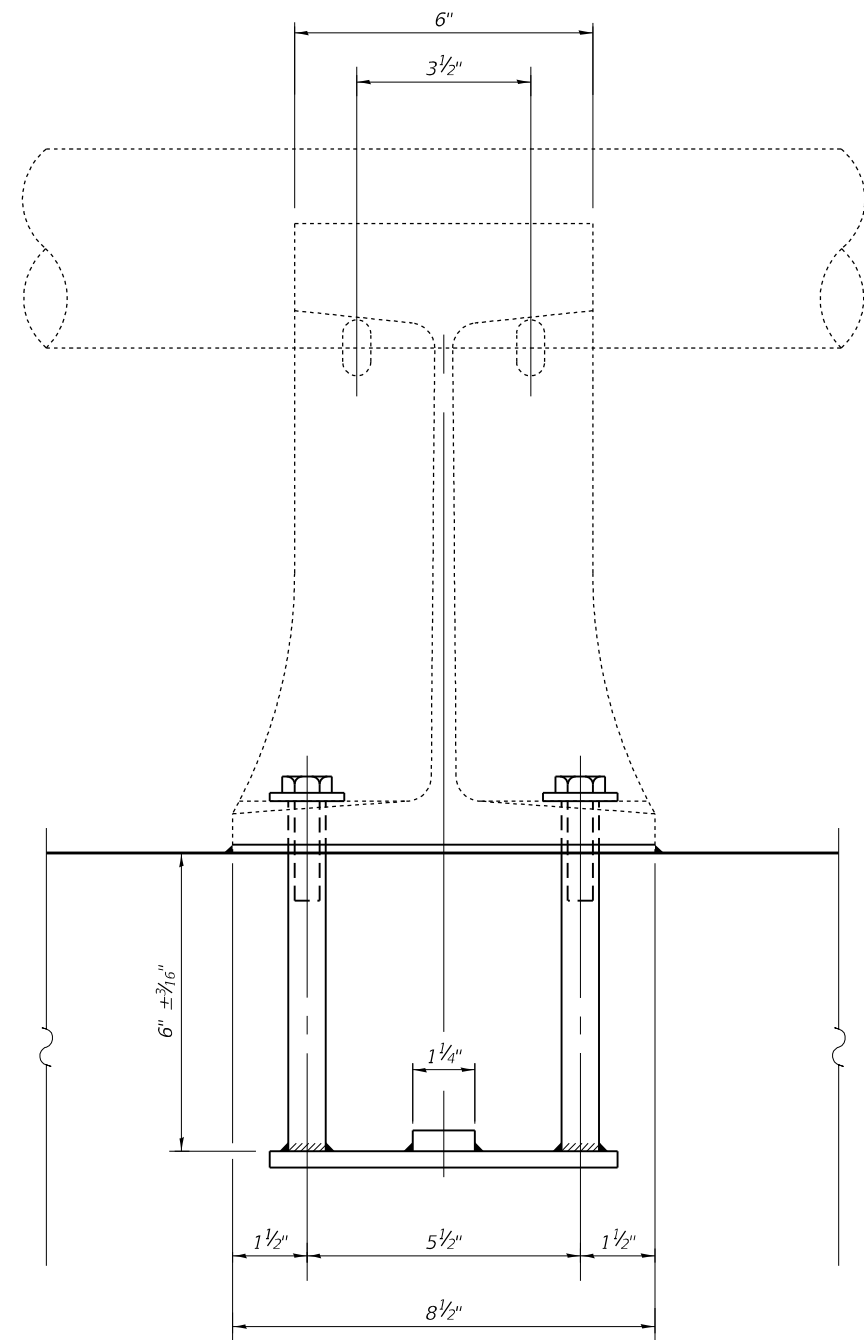
MODEL: Default
 FILE NAME: p:\project-cw-bead\paw.com\FWIDOT\Documents\DOT Office\Drawings\74996-ct-058-0072 Repair Plans.dgn
 PROJECT: 74996\CAD\Drawings\74996-ct-058-0072 Repair Plans.dgn

USER NAME = steffenmk	DESIGNED - T. Walk	REVISED -
DRAWN - T. Walk	REVISED -	
PLOT SCALE = 100,0000' / in.	CHECKED - D. Macklin	REVISED -
PLOT DATE = 8/17/2021	DATE - August 2020	REVISED -

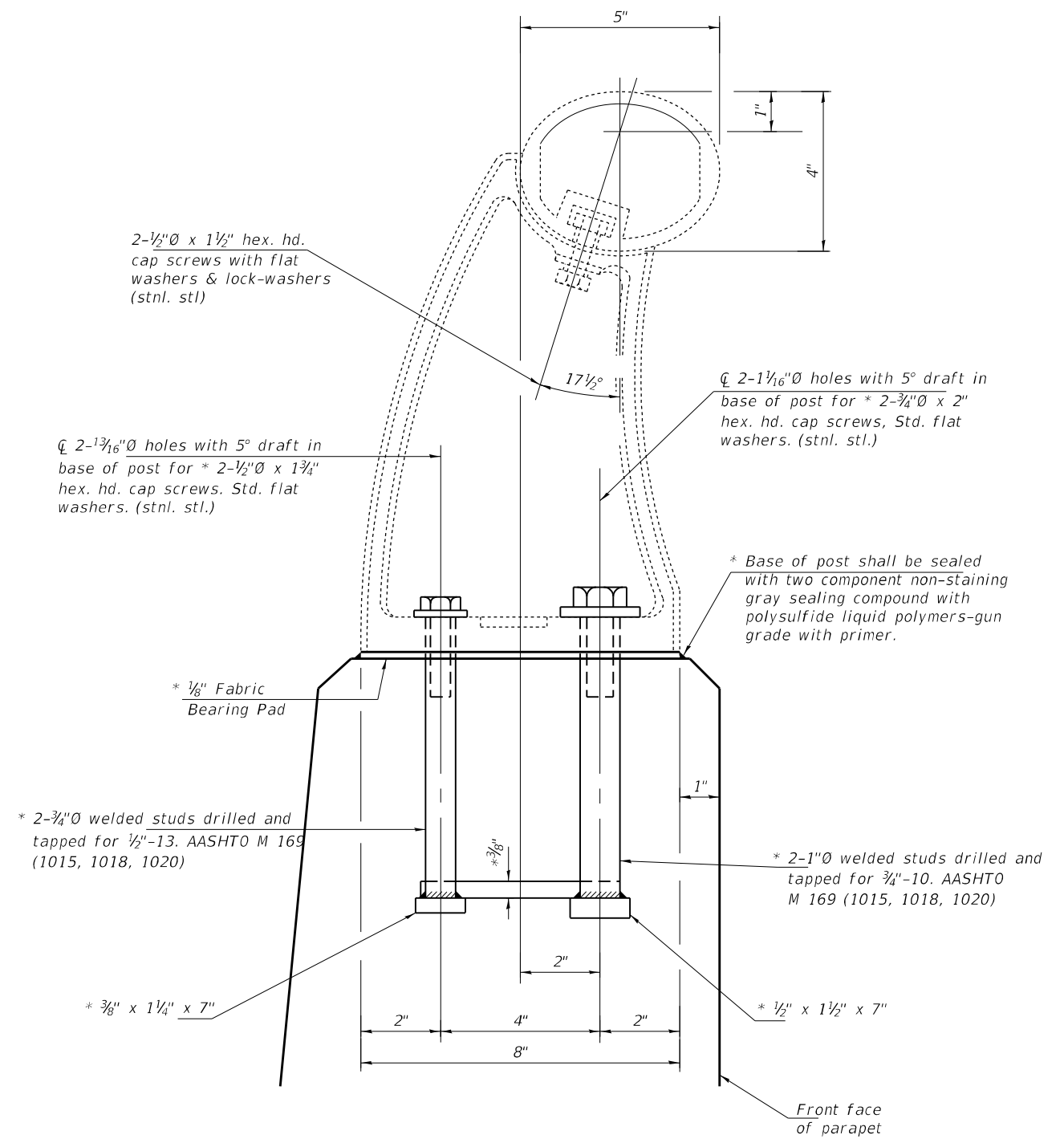
**STATE OF ILLINOIS
DEPARTMENT OF TRANSPORTATION**

EXPANSION JOINT REPLACEMENT DETAILS			
S.N. 058-0072			
SCALE:	SHEET 4	OF 12 SHEETS	STA. TO STA.

F.A.J. RTE.	SECTION	COUNTY	TOTAL SHEETS	SHEET NO.
72	D7 BRIDGE REPAIRS 2022-2	MACON	15	7
CONTRACT NO. 74996				
ILLINOIS FED. AID PROJECT				



ELEVATION AT RAIL POST



RAIL POST DETAILS

* New Rail Post anchorage devices will be required at each location where posts are connected to new construction. Cost included with Concrete Superstructure.

MODEL: Default
 FILE NAME: p:\subsect-cw-bead-fwy.com\FWIDOT\Documents\DOT Office\District 7\Projects\74996\CADD\data\CAD\sheet\074996-ct-058-0072 Repair Plans.dgn
 PROJECT: 74996\CADD\data\CAD\sheet\074996-ct-058-0072 Repair Plans.dgn

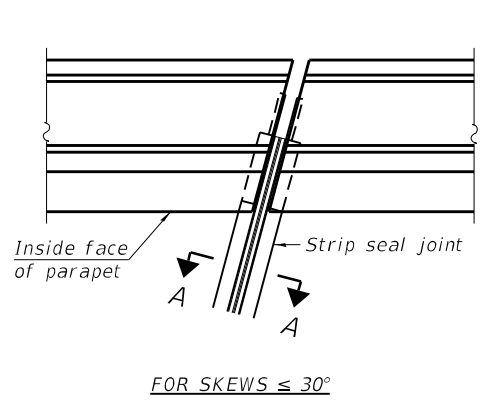
USER NAME = steffenmk	DESIGNED - T. Walk	REVISED -
	DRAWN - T. Walk	REVISED -
PLOT SCALE = 100,0000' / in.	CHECKED - D. Macklin	REVISED -
PLOT DATE = 8/17/2021	DATE - August 2020	REVISED -

**STATE OF ILLINOIS
DEPARTMENT OF TRANSPORTATION**

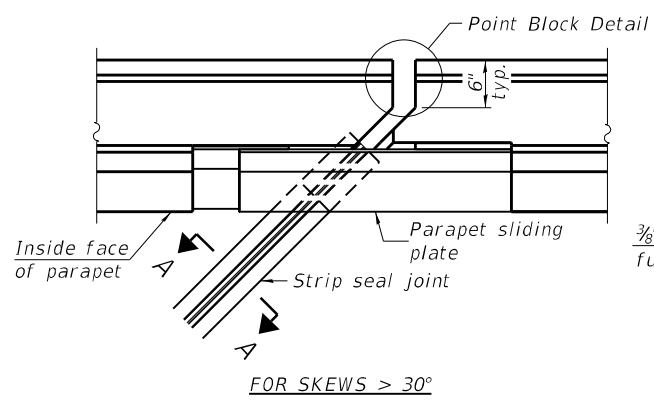
**RAIL POST DETAILS
S.N. 058-0072**

SCALE: SHEET 5 OF 12 SHEETS STA. TO STA.

F.A.J. RTE.	SECTION	COUNTY	TOTAL SHEETS	SHEET NO.
72	D7 BRIDGE REPAIRS 2022-2	MACON	15	8
CONTRACT NO. 74996				
ILLINOIS FED. AID PROJECT				

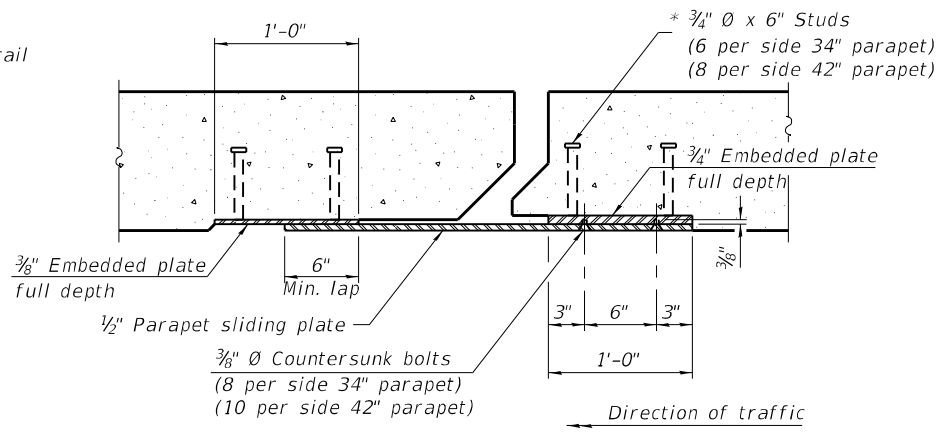


FOR SKEWS $\leq 30^\circ$



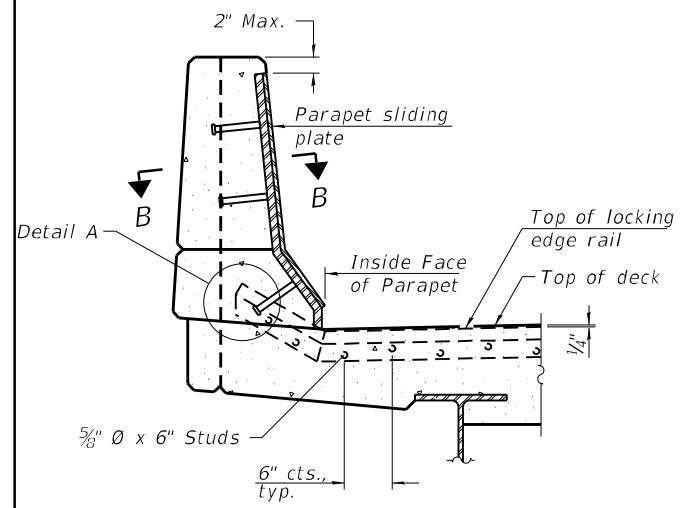
FOR SKEWS $> 30^\circ$

PLAN AT PARAPET



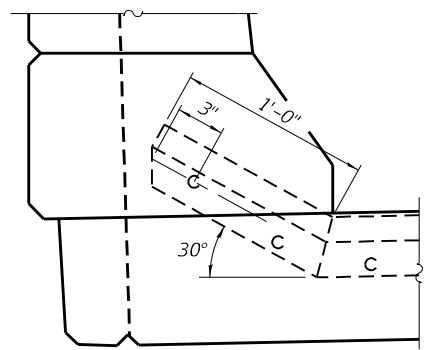
SECTION B-B

Notes:
 The strip seal shall be made continuous and shall have a minimum thickness of 1/4". The configuration of the strip seal shall match the configuration of the locking edge rails. Open or "webbed" strip seal gland configurations are not permitted. The gland shall be sized for a maximum rated movement of 4 inches.
 The locking edge rails depicted are configured for typical applications and are conceptual only. The actual configuration of the locking edge rails and matching strip seal may vary from manufacturer to manufacturer provided they fit the application and meet the minimum anchorage shown. Flanged edge rails, however, will not be allowed. Locking edge rails may exceed the 4 1/2" maximum depth provided the anchorage system is revised according to the manufacturer's recommendation.
 The manufacturer's recommended installation methods shall be followed.
 All steel components shall be galvanized after fabrication according to Article 520.03 of the Standard Specifications.
 The Maximum space between locking edge rail segments shall be 3/16" and sealed with a suitable sealant; however, any rail joint within 10' measured perpendicular to the face of the curb or parapet shall be welded as shown in the locking edge rail splice detail.

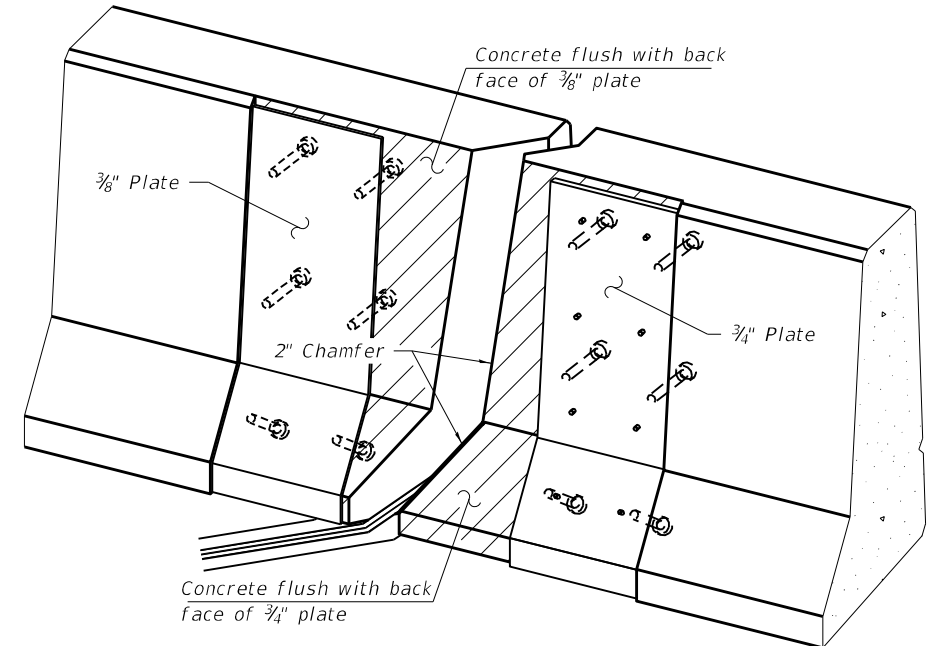


ELEVATION AT PARAPET

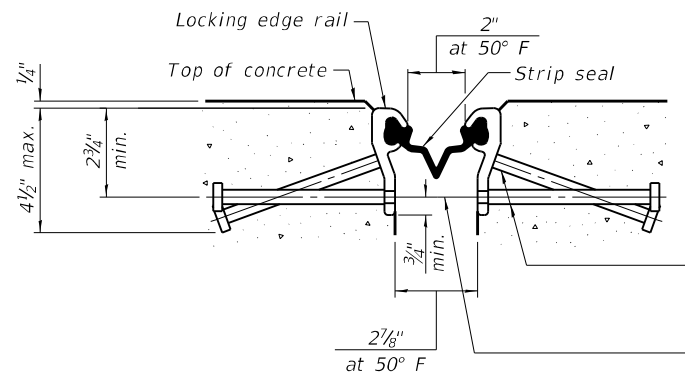
(Skews $> 30^\circ$ shown. Skews $\leq 30^\circ$ similar except as shown in plan view.)



DETAIL A



TRIMETRIC VIEW
 (Showing embedded plates only)



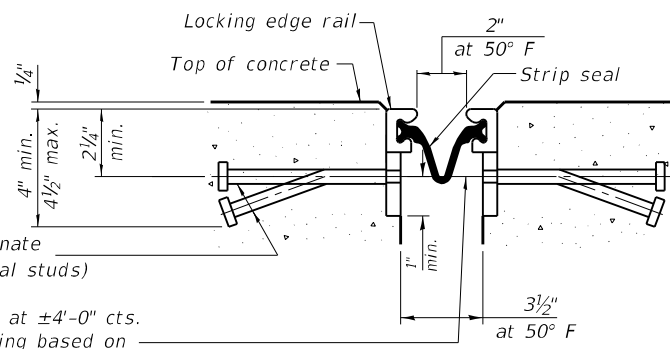
SHOWING ROLLED RAIL JOINT

* 5/8" ϕ x 6" studs @ 6" cts. (alternate angled/bent studs with horizontal studs)

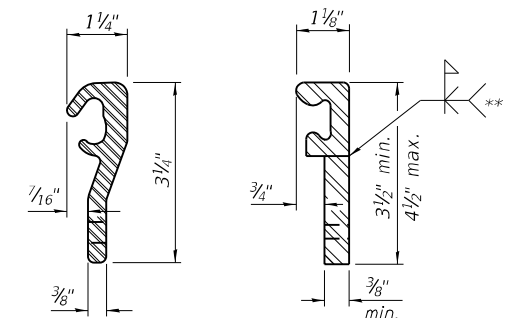
3/8" ϕ threaded rods in 7/16" ϕ holes at ± 4 -0" cts. for holding the proper joint opening based on the temperature during the deck pour. Place to miss studs. All rods shall be burned, or sawed off flush with the plates after concrete is set.

SECTION A-A

* Granular or solid flux filled headed studs conforming to Article 1006.32 of the Std. Specs., automatically end welded.

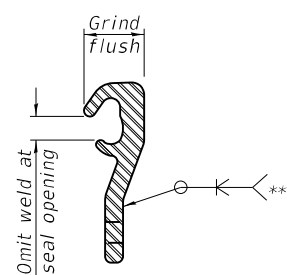


SHOWING WELDED RAIL JOINT



LOCKING EDGE RAILS

** Back gouge not required if complete joint penetration is verified by mock-up.



LOCKING EDGE RAIL SPLICE

The inside of the locking edge rail groove shall be free of weld residue. Rolled rail shown, welded rail similar.

BILL OF MATERIAL

Item	Unit	Total
Preformed Joint Strip Seal	Foot	126

MODEL: Default
 FILE: N:\MISC_Plan\Subsect-pw-bead-ry.com\FWIDOT\Documents\DOT_Offices\Director_T\Projects\74996\CADD\Drawings\74996-RT-058-0072_Repair_Plan-6.dgn
 PROJECT: 74996\CADD\Drawings\74996-RT-058-0072_Repair_Plan-6.dgn

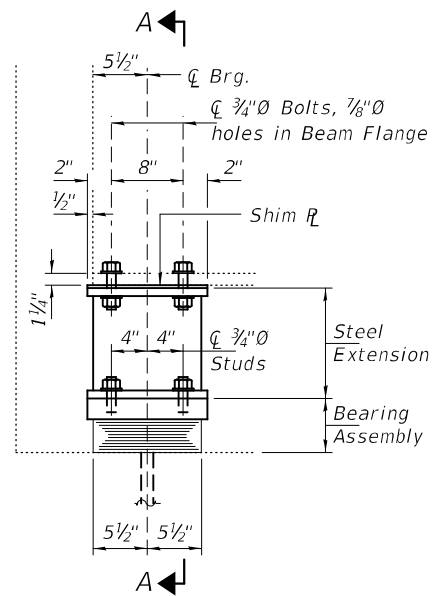
USER NAME = steffemk	DESIGNED - T. Walk	REVISED -
PLOT SCALE = 100,0000' / in.	DRAWN - T. Walk	REVISED -
PLOT DATE = 8/17/2021	CHECKED - D. MACKLIN	REVISED -
	DATE - August 2020	REVISED -

**STATE OF ILLINOIS
 DEPARTMENT OF TRANSPORTATION**

**PREFORMED JOINT STRIP SEAL
 S.N. 058-0072**

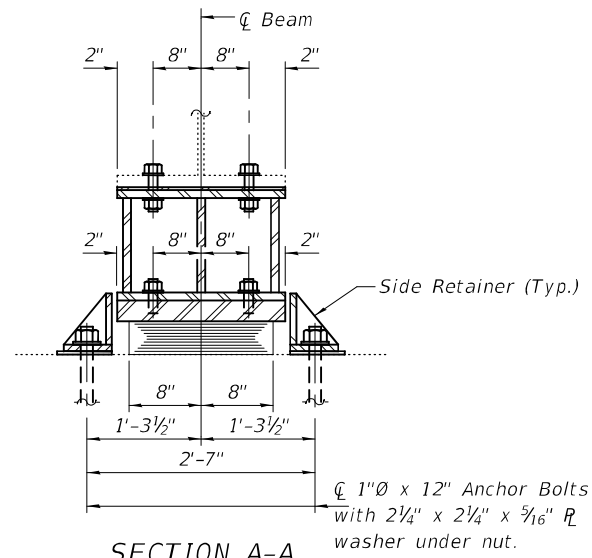
SCALE: SHEET 6 OF 12 SHEETS STA. TO STA.

F.A.J. RTE.	SECTION	COUNTY	TOTAL SHEETS	SHEET NO.
72	D7 BRIDGE REPAIRS 2022-2	MACON	15	9
ILLINOIS FED. AID PROJECT			CONTRACT NO. 74996	



ELEVATION AT ABUTMENT

TYPE I ELASTOMERIC EXP. BRG.



SECTION A-A

BEAM REACTIONS

R _L	(K)	77.0
R _T	(K)	44.8
Imp.	(K)	8.1
R (Total)	(K)	129.9

Notes:

Diaphragm removal and reinstallation may be required to facilitate drilling holes. Cost included with Furnishing and Erecting Structural Steel.

New steel extensions, shim plates and connection bolts are included with Furnishing and Erecting Structural Steel.

Prior to ordering any material, the Contractor shall verify in the field all bearing height and shim thickness dimensions. Adjustment must account for deck heave due to pack rust (if present).

Min. jack capacity = 78 Tons.

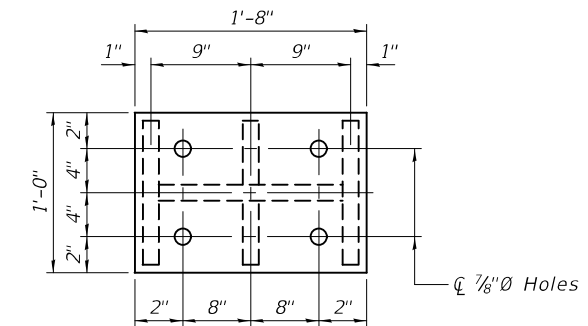
Anchor bolts shall be ASTM F1554 all-thread (or an Engineer-approved alternate material) of the grade(s) and diameter(s) specified. ASTM A307 Grade C anchor bolts may be used in lieu of ASTM F1554 Grade 36 (Fy=36ksi). The corresponding specified grade of AASHTO M314 anchor bolts may be used in lieu of ASTM F1554.

Drilled and set anchor bolts shall be installed according to Article 521.06 of the Standard Specifications.

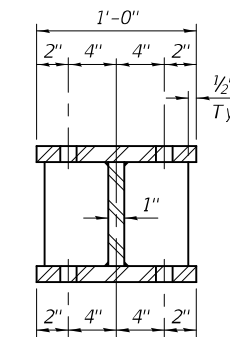
Cost of Side retainers and Stainless Steel plates shall be included in the cost of Elastomeric Bearing Assembly, Type I.

New bearing plates, steel extensions, shim plates, side retainers, anchor bolts, connection bolts, nuts and washers shall be hot dip galvanized according to Special Provision "Hot Dip Galvanizing for Structural Steel".

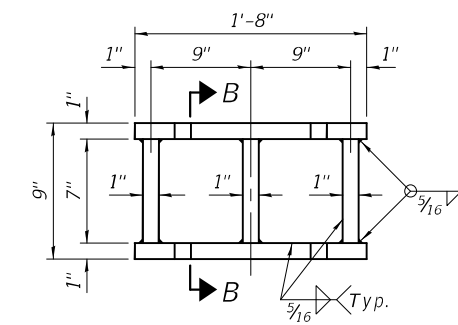
All structural steel shall conform to AASHTO Classification M-270 Gr. 36, unless otherwise noted.



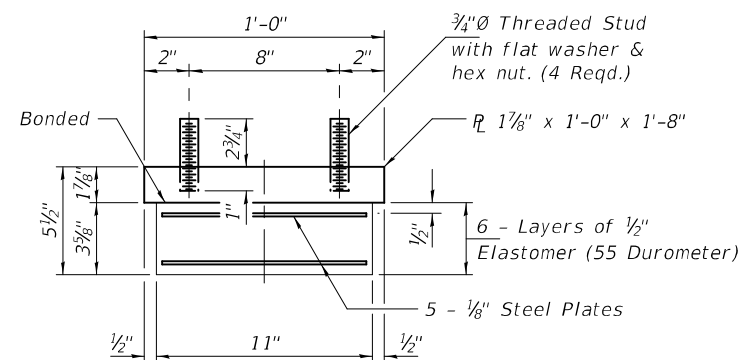
PLAN TOP AND BOTTOM PLATE



SECTION B-B

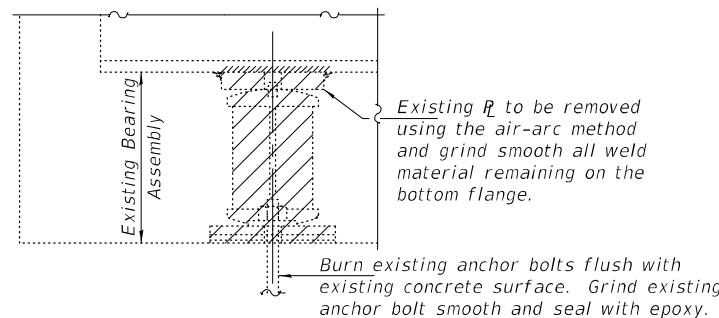


STEEL EXTENSION DETAIL



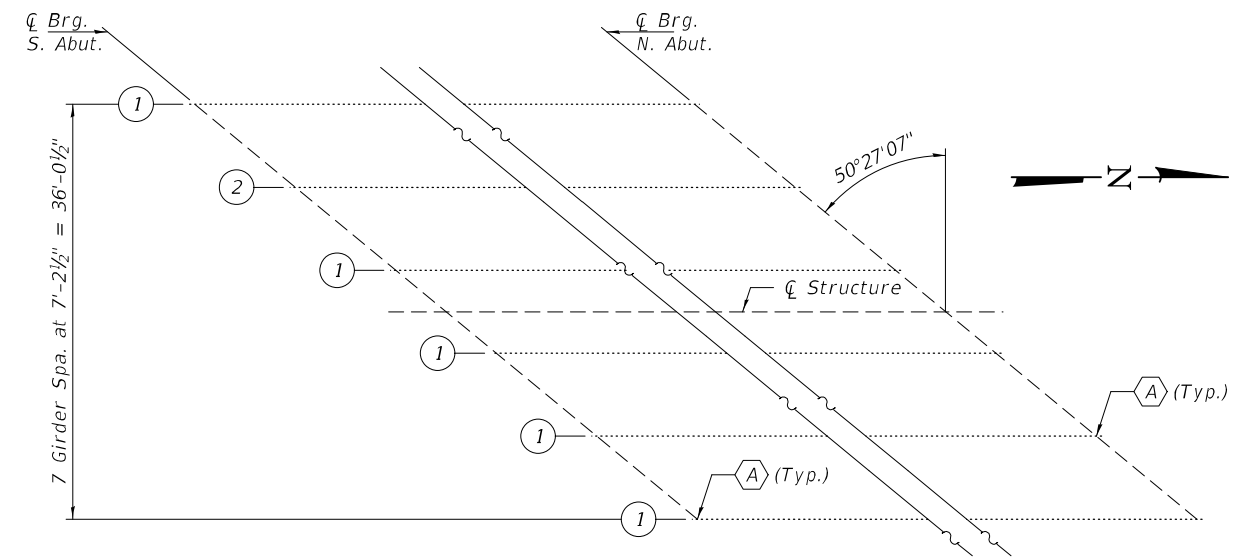
BEARING ASSEMBLY

Note:
Shim plates shall not be placed under Bearing Assembly.



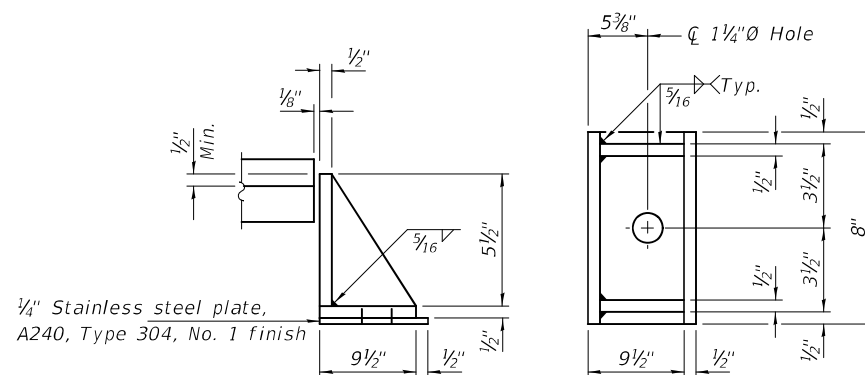
EXISTING BEARING REMOVAL DETAIL

Cost included with Jack and Remove Existing Bearings.



PARTIAL FRAMING PLAN

A - Bearing Replacement



SIDE RETAINER

Equivalent rolled angle with stiffeners will be allowed in lieu of welded plates.

BILL OF MATERIAL

Item	Unit	Total
Elastomeric Bearing Assembly, Type I	Each	12
Jack and Remove Existing Bearings	Each	12
Furnishing and Erecting Structural Steel	Pound	2880
Anchor Bolts, 1"Ø	Each	24

TYI/REPS 5-17-2018

DESIGNED - Victor H. Veliz
CHECKED - Chi-Cheung Chau
DRAWN - daburdell
CHECKED - VHV CCC

EXAMINED
PASSED
ENGINEER OF BRIDGES AND STRUCTURES

DATE - SEPTEMBER 27, 2021
REVISED -
REVISED -

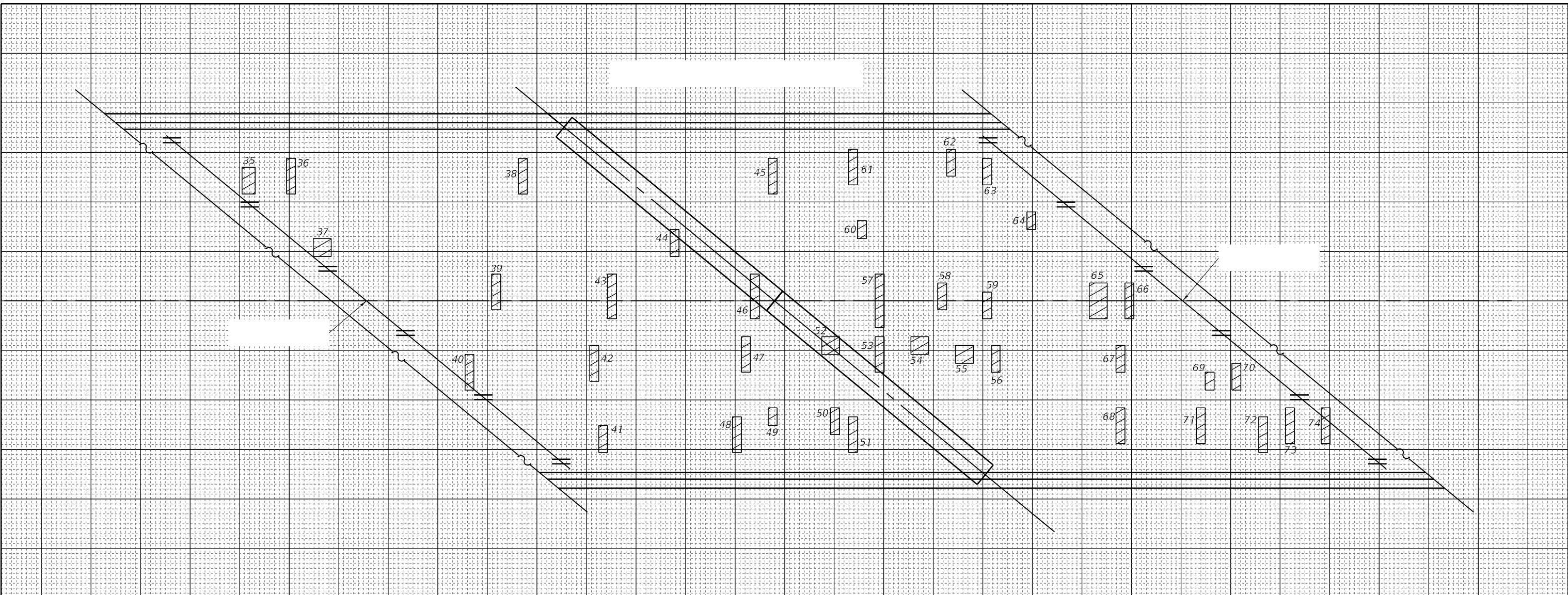
STATE OF ILLINOIS
DEPARTMENT OF TRANSPORTATION

BEARING DETAILS
SN 058-0072

SHEET NO. 10 OF 12 SHEETS

F.A.I. RTE. SECTION COUNTY TOTAL SHEETS SHEET NO.
72 D7 BRIDGE REPAIRS 2022-2 MACON 15 13
CONTRACT NO. 74996
ILLINOIS FED. AID PROJECT

MODEL: Default
 FILE NAME: p:\w\p-w\benley.com\p\DOT\Documents\DOT - Offices\District 7\Projects\74996\CAD\Drawings\74996-sh-058-0072_Repair_Plans.dgn



PATCH NO.	SIZE		DECK SLAB REPAIR (FD TY I)	DECK SLAB REPAIR (FD TY II)
	LENGTH	WIDTH	SQ YD	SQ YD
35	1.5	3.0	0.5	
36	1.0	4.0	0.4	
37	2.0	2.0	0.4	
38	1.0	4.0	0.4	
39	1.0	4.0	0.4	
40	1.0	4.0	0.4	
41	1.0	3.0	0.3	
42	1.0	4.0	0.4	
43	1.0	5.0	0.6	
44	1.0	3.0	0.3	
45	1.0	4.0	0.4	
46	1.0	5.0	0.6	
47	1.0	4.0	0.4	
48	1.0	4.0	0.4	
49	1.0	2.0	0.2	
50	1.0	3.0	0.3	

PATCH NO.	SIZE		DECK SLAB REPAIR (FD TY I)	DECK SLAB REPAIR (FD TY II)
	LENGTH	WIDTH	SQ YD	SQ YD
51	1.0	4.0	0.4	
52	2.0	2.0	0.4	
53	1.0	4.0	0.4	
54	2.0	2.0	0.4	
55	2.0	2.0	0.4	
56	1.0	3.0	0.3	
57	1.0	6.0		0.7
58	1.0	3.0	0.3	
59	1.0	3.0	0.3	
60	1.0	2.0	0.2	
61	1.0	4.0	0.4	
62	1.0	3.0	0.3	
63	1.0	3.0	0.3	
64	1.0	2.0	0.2	
65	2.0	4.0		0.9
66	1.0	4.0	0.4	

PATCH NO.	SIZE		DECK SLAB REPAIR (FD TY I)	DECK SLAB REPAIR (FD TY II)
	LENGTH	WIDTH	SQ YD	SQ YD
67	1.0	3.0	0.3	
68	1.0	4.0	0.4	
69	1.0	2.0	0.2	
70	1.0	3.0	0.3	
71	1.0	4.0	0.4	
72	1.0	4.0	0.4	
73	1.0	4.0	0.4	
74	1.0	4.0	0.4	
TOTALS			15.2	1.6
ROUND TO:			16	2

ESTIMATED PAY QUANTITIES
 DECK SLAB REPAIR (FULL DEPTH, TYPE I) = 16 SQ YD
 DECK SLAB REPAIR (FULL DEPTH, TYPE II) = 2 SQ YD

THE LOCATIONS AND SIZES SHOWN GRAPHICALLY ABOVE ARE APPROXIMATE. SEE THIS TABLE FOR ACTUAL SIZES.



DATE OF SURVEY: 06-23-2019
 SURVEY BY: DPM & TMW
 METHOD OF SURVEY: VISUAL

USER NAME = steffemk	DESIGNED - T. Walk	REVISED -
PLOT SCALE = 100,000' / in.	DRAWN - T. Walk	REVISED -
PLOT DATE = 8/17/2021	CHECKED - D. Macklin	REVISED -
	DATE - August 2020	REVISED -

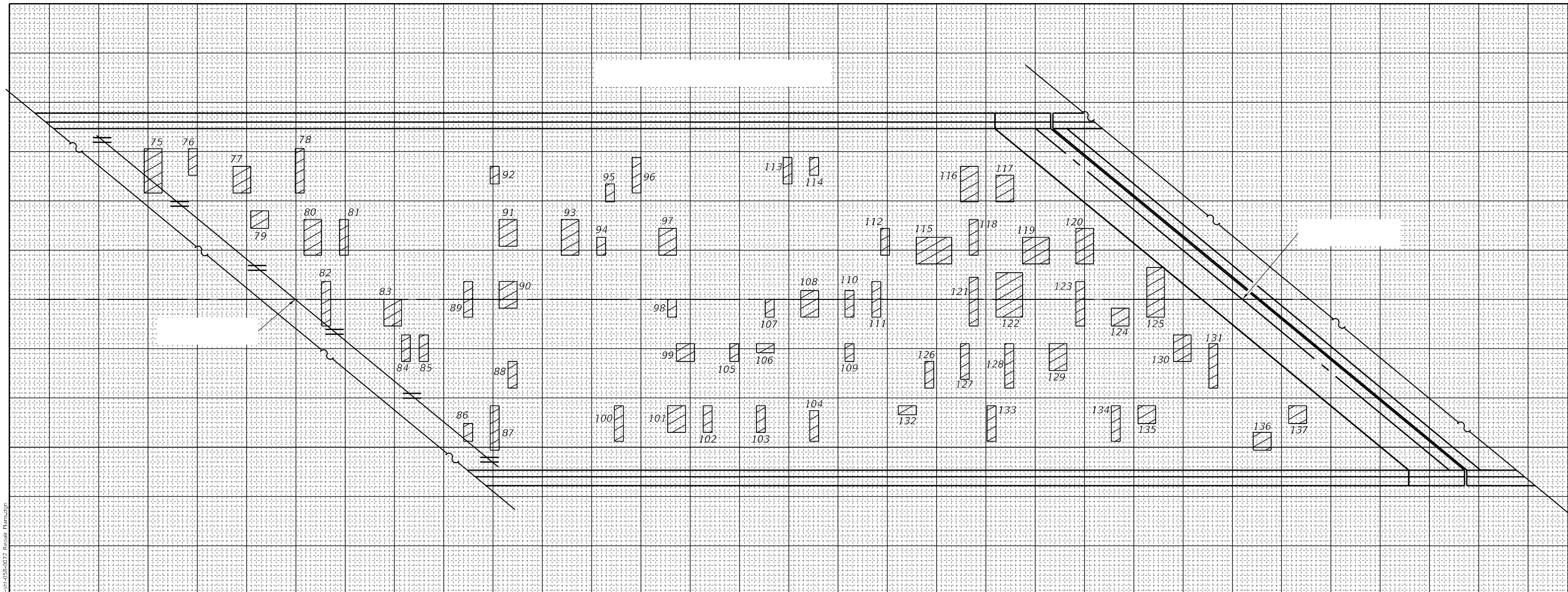
**STATE OF ILLINOIS
 DEPARTMENT OF TRANSPORTATION**

**BRIDGE DECK PATCHING, MIDDLE 1/3 BRIDGE DECK
 SN. 058-0072**

SCALE: SHEET 8 OF 12 SHEETS STA. TO STA.

F.A.J. RTE.	SECTION	COUNTY	TOTAL SHEETS	SHEET NO.
72	D7 BRIDGE REPAIRS 2022-2	MACON	15	11
CONTRACT NO. 74996				
ILLINOIS FED. AID PROJECT				

MODEL: Default
 FILE NAME: p:\11\1101-pw.lentley.com\FY2021\Documents\DOT - Offices\District 7\Projects\74996\CAD\Drawings\74996-sh-058-0072_Repair_Plans.dgn



PATCH NO.	SIZE		DECK SLAB REPAIR (FD TY I)	DECK SLAB REPAIR (FD TY II)
	LENGTH	WIDTH	SQ YD	SQ YD
75	2.0	5.0		1.1
76	1.0	3.0	0.3	
77	2.0	3.0		0.7
78	1.0	5.0	0.6	
79	2.0	2.0	0.4	
80	2.0	4.0		0.9
81	1.0	4.0	0.4	
82	1.0	5.0	0.6	
83	2.0	3.0		0.7
84	1.0	3.0	0.3	
85	1.0	3.0	0.3	
86	1.0	2.0	0.2	
87	1.0	5.0	0.6	
88	1.0	3.0	0.3	
89	1.0	4.0	0.4	
90	2.0	3.0		0.7

PATCH NO.	SIZE		DECK SLAB REPAIR (FD TY I)	DECK SLAB REPAIR (FD TY II)
	LENGTH	WIDTH	SQ YD	SQ YD
91	2.0	3.0		0.7
92	1.0	2.0	0.2	
93	2.0	4.0		0.9
94	1.0	2.0	0.2	
95	1.0	2.0	0.2	
96	1.0	4.0	0.4	
97	2.0	3.0		0.7
98	1.0	2.0	0.2	
99	2.0	2.0	0.4	
100	1.0	4.0	0.4	
101	2.0	3.0		0.7
102	1.0	3.0	0.3	
103	1.0	3.0	0.3	
104	1.0	3.5	0.4	
105	1.0	2.0	0.2	
106	2.0	1.0	0.2	

PATCH NO.	SIZE		DECK SLAB REPAIR (FD TY I)	DECK SLAB REPAIR (FD TY II)
	LENGTH	WIDTH	SQ YD	SQ YD
107	1.0	2.0	0.2	
108	2.0	3.0		0.7
109	1.0	2.0	0.2	
110	1.0	3.0	0.3	
111	1.0	4.0	0.4	
112	1.0	3.0	0.3	
113	1.0	3.0	0.3	
114	1.0	2.0	0.2	
115	4.0	3.0		1.3
116	2.0	4.0		0.9
117	2.0	3.0		0.7
118	1.0	4.0	0.4	
119	3.0	3.0		1.0
120	2.0	4.0		0.9
121	1.0	5.5		0.6
122	1.0	4.0	0.4	

PATCH NO.	SIZE		DECK SLAB REPAIR (FD TY I)	DECK SLAB REPAIR (FD TY II)
	LENGTH	WIDTH	SQ YD	SQ YD
123	1.0	5.0	0.6	
124	2.0	2.0	0.4	
125	2.0	5.5		1.2
126	1.0	3.0	0.3	
127	1.0	4.0	0.4	
128	1.0	5.0	0.6	
129	2.0	3.0		0.7
130	2.0	3.0		0.7
131	1.0	5.0	0.6	
132	2.0	1.0	0.2	
133	1.0	4.0	0.4	
134	1.0	4.0	0.4	
135	2.0	2.0	0.4	
136	2.0	2.0	0.4	
137	2.0	2.0	0.4	
TOTALS			16.6	15.5
ROUND TO:			17	16

ESTIMATED PAY QUANTITIES
 DECK SLAB REPAIR (FULL DEPTH, TYPE I) = 17 SQ YD
 DECK SLAB REPAIR (FULL DEPTH, TYPE II) = 16 SQ YD

THE LOCATIONS AND SIZES SHOWN GRAPHICALLY ABOVE ARE APPROXIMATE. SEE THIS TABLE FOR ACTUAL SIZES.

DATE OF SURVEY: 06-23-2019
 SURVEY BY: DPM & TMW
 METHOD OF SURVEY: VISUAL

USER NAME = stefenmk	DESIGNED - T. Walk	REVISED -
PLOT SCALE = 100,000' / in.	DRAWN - T. Walk	REVISED -
PLOT DATE = 8/17/2021	CHECKED - D. Macklin	REVISED -
	DATE - August 2020	REVISED -

**STATE OF ILLINOIS
 DEPARTMENT OF TRANSPORTATION**

**BRIDGE DECK PATCHING, NORTH 1/2 BRIDGE DECK
 SN. 058-0072**

SCALE: SHEET 9 OF 12 SHEETS STA. TO STA.

F.A.J. RTE.	SECTION	COUNTY	TOTAL SHEETS	SHEET NO.
72	D7 BRIDGE REPAIRS 2022-2	MACON	15	12
CONTRACT NO. 74996				
ILLINOIS FED. AID PROJECT				

*Bearing Details Prepared
by BBS Repairs Unit*

*Sheet inserted by BBS
in Springfield*

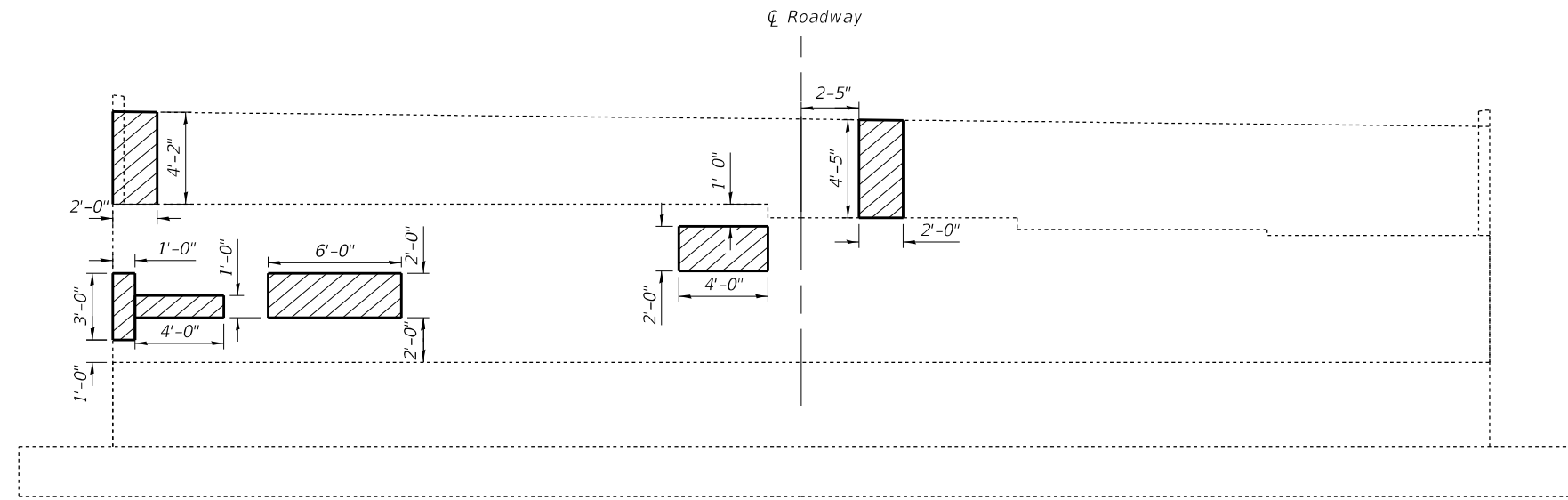
MODEL: Default
FILE NAME: p:\ultra-cw-bead-fy.com\FW\DOT Documents\DOT Office\District 7\Projects\74996\CADD\BBS\CAD\chests\074996-ct-058-0072 Repair Plans.dgn

USER NAME = steffenmk	DESIGNED -	REVISED -
	DRAWN -	REVISED -
PLOT SCALE = 100,0000 ' / in.	CHECKED -	REVISED -
PLOT DATE = 8/17/2021	DATE -	REVISED -

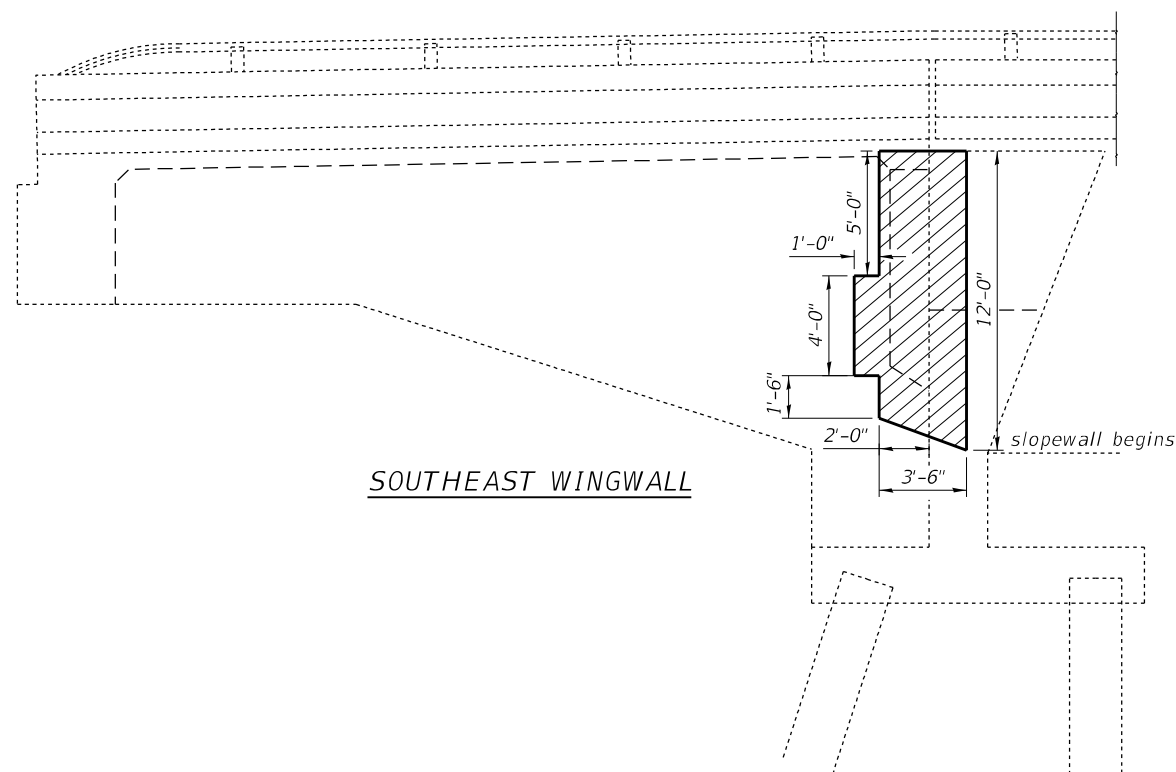
**STATE OF ILLINOIS
DEPARTMENT OF TRANSPORTATION**

SCALE: SHEET 10 OF 12 SHEETS STA. TO STA.

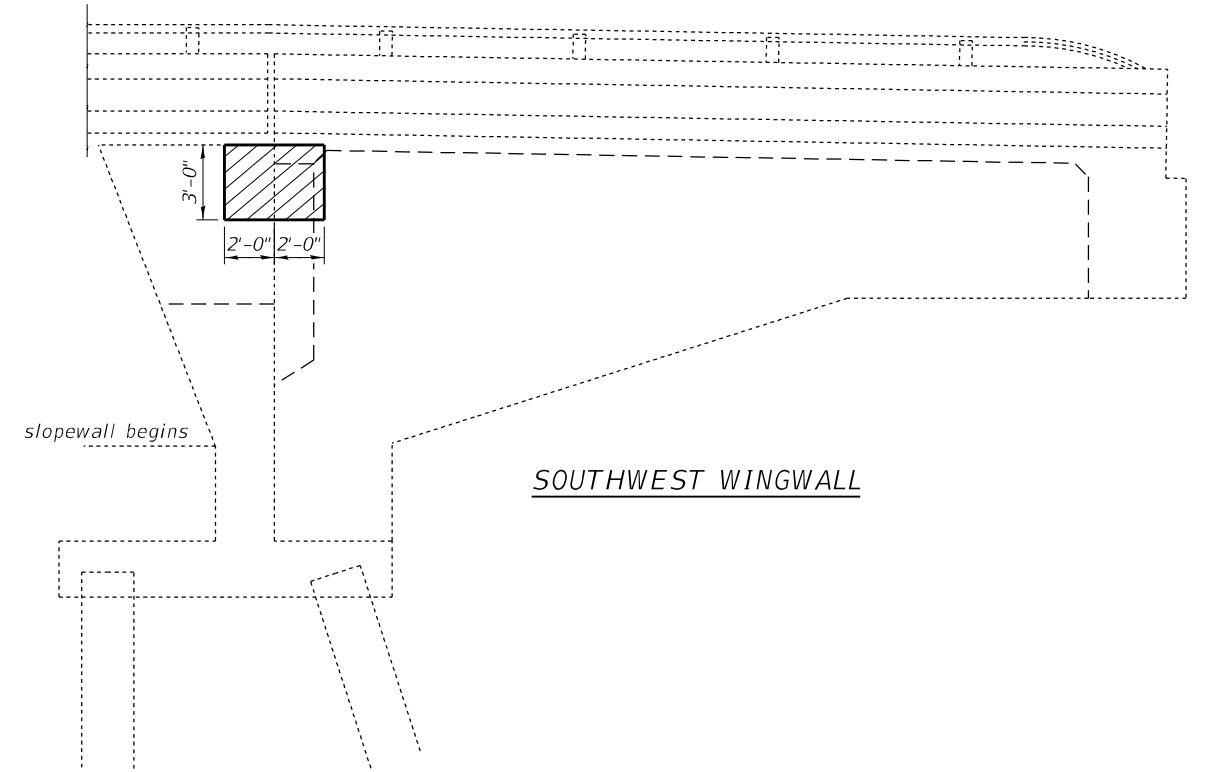
F.A.J RTE.	SECTION	COUNTY	TOTAL SHEETS	SHEET NO.
72	D7 BRIDGE REPAIRS 2022-2	MACON	15	13
ILLINOIS			CONTRACT NO. 74994	
FED. AID PROJECT				



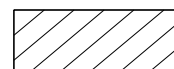
SOUTH ABUTMENT



SOUTHEAST WINGWALL



SOUTHWEST WINGWALL



Structural Repair of Concrete (Depth ≤ 5")

Notes: Quantities and locations are approximated. Actual quantities and locations to be determined in the field by the Engineer.

This work is intended to repair only areas of severe deterioration. Some minor deteriorated areas may be left unrepaired.

BILL OF MATERIAL

ITEM	UNIT	QUANTITY
Structural Repair of Concrete ≤ 5 inches	Sq. Ft.	92

MODEL: P:\default
 FILE NAME: p:\project-aw-beadefy.com\P\DOT\Documents\DOT Office\District 7\Projects\74996\CADD\Bids\CAD\sheet\0774996-ct-058-0072 Repair Plans.dgn

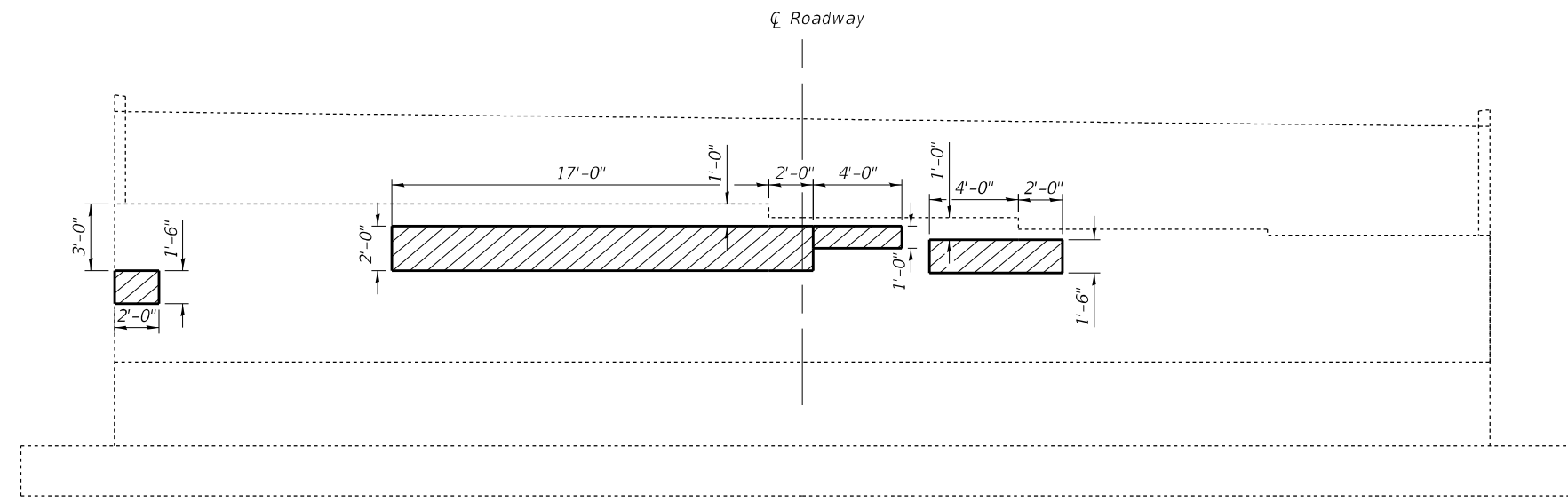
USER NAME = steffemk	DESIGNED - T. Walk	REVISED -
	DRAWN - T. Walk	REVISED -
PLOT SCALE = 100,0000' / in.	CHECKED - D. Macklin	REVISED -
PLOT DATE = 8/17/2021	DATE - August 2020	REVISED -

**STATE OF ILLINOIS
DEPARTMENT OF TRANSPORTATION**

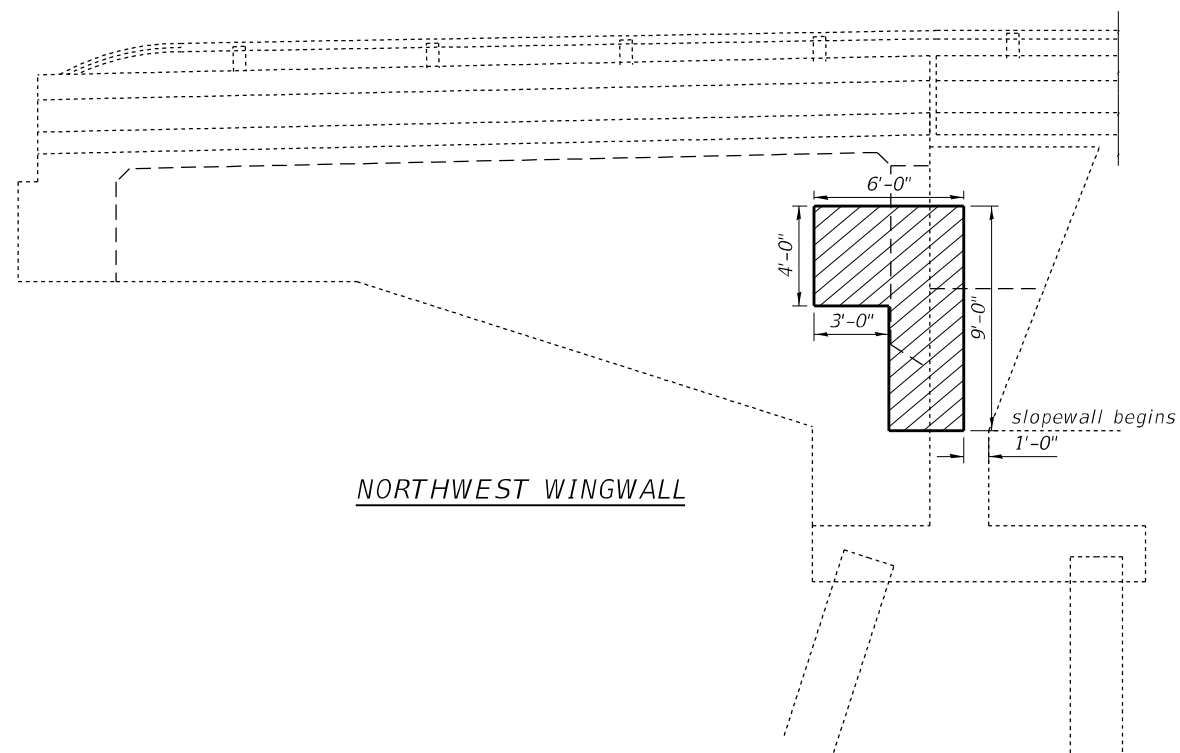
**STRUCTURAL REPAIR OF CONCRETE SOUTH ABUTMENT
S.N. 058-0072**

SCALE: SHEET 11 OF 12 SHEETS STA. TO STA.

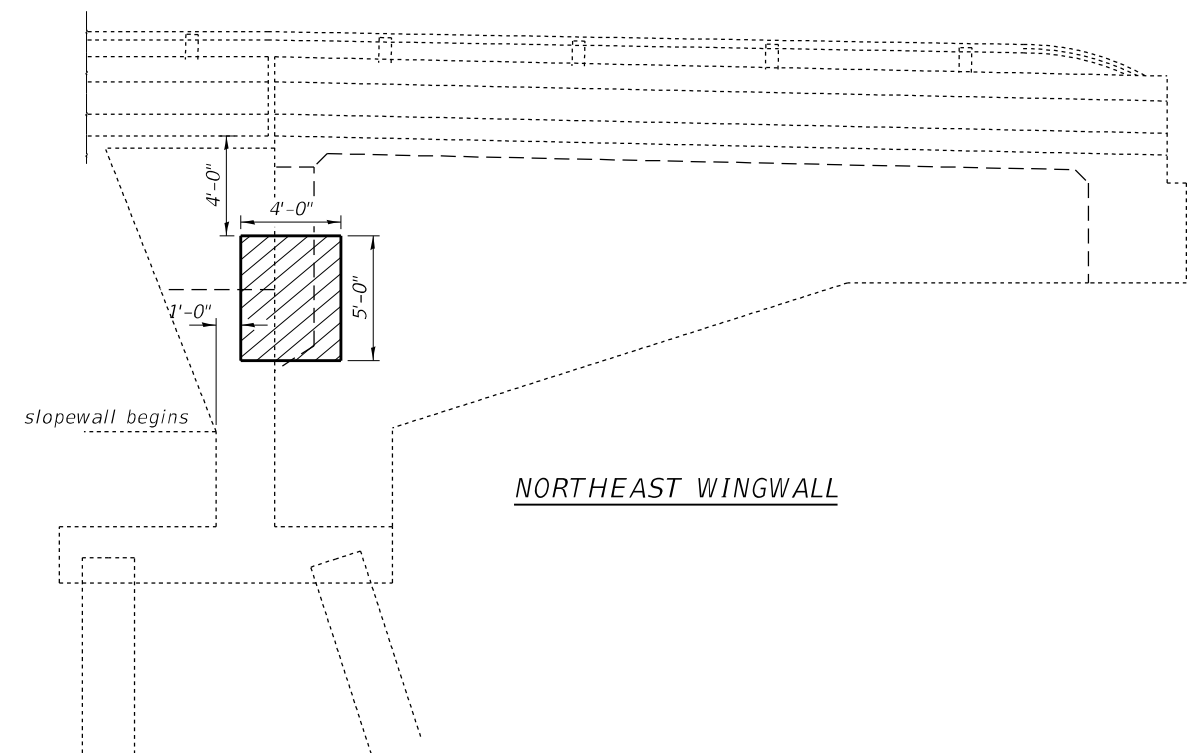
F.A.J. RTE.	SECTION	COUNTY	TOTAL SHEETS	SHEET NO.
72	D7 BRIDGE REPAIRS 2022-2	MACON	15	14
ILLINOIS FED. AID PROJECT			CONTRACT NO. 74996	



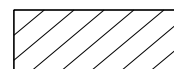
NORTH ABUTMENT



NORTHWEST WINGWALL



NORTHEAST WINGWALL



Structural Repair of Concrete (Depth ≤ 5")

Notes: Quantities and locations are approximated. Actual quantities and locations to be determined in the field by the Engineer.

This work is intended to repair only areas of severe deterioration. Some minor deteriorated areas may be left unrepaired.

BILL OF MATERIAL

ITEM	UNIT	QUANTITY
Structural Repair of Concrete ≤ 5 inches	Sq. Ft.	113

MODEL: Default
FILE NAME: p:\project-aw-beadefy.com\FWIDOT\Documents\DOT Office\District 7\Projects\74996\CADD\Drawings\CAD\Drawings\74996-058-0072 Repair Plans.dgn

USER NAME = steffenmk	DESIGNED - T. Walk	REVISED -
	DRAWN - T. Walk	REVISED -
PLOT SCALE = 100,0000' / in.	CHECKED - D. Macklin	REVISED -
PLOT DATE = 8/17/2021	DATE - August 2020	REVISED -

**STATE OF ILLINOIS
DEPARTMENT OF TRANSPORTATION**

**STRUCTURAL REPAIR OF CONCRETE NORTH ABUTMENT
S.N. 058-0072**

SCALE: SHEET 12 OF 12 SHEETS STA. TO STA.

F.A.J. RTE.	SECTION	COUNTY	TOTAL SHEETS	SHEET NO.
72	D7 BRIDGE REPAIRS 2022-2	MACON	15	15
ILLINOIS FED. AID PROJECT			CONTRACT NO. 74996	