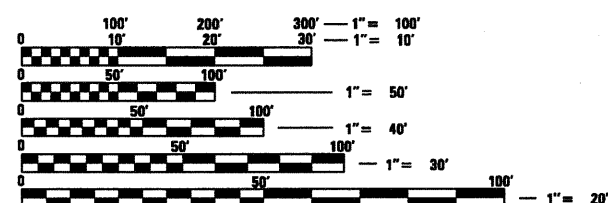


QC / QA CONCRETE
N P D E S REQUIRED

FOR INDEX OF SHEETS, SEE SHEET NO. 2

ADT = 2,450 (2009)
% SU = 4.1%
% MU = 9.2%

DESIGN DESIGNATION
CLASS II TRUCK ROUTE
FUNCTIONAL CLASSIFICATION
OTHER PRINCIPAL ARTERIAL



FULL SIZE PLANS HAVE BEEN PREPARED USING STANDARD
ENGINEERING SCALES. REDUCED SIZED PLANS WILL NOT
CONFORM TO STANDARD SCALES. IN MAKING MEASUREMENTS
ON REDUCED PLANS, THE ABOVE SCALES MAY BE USED.

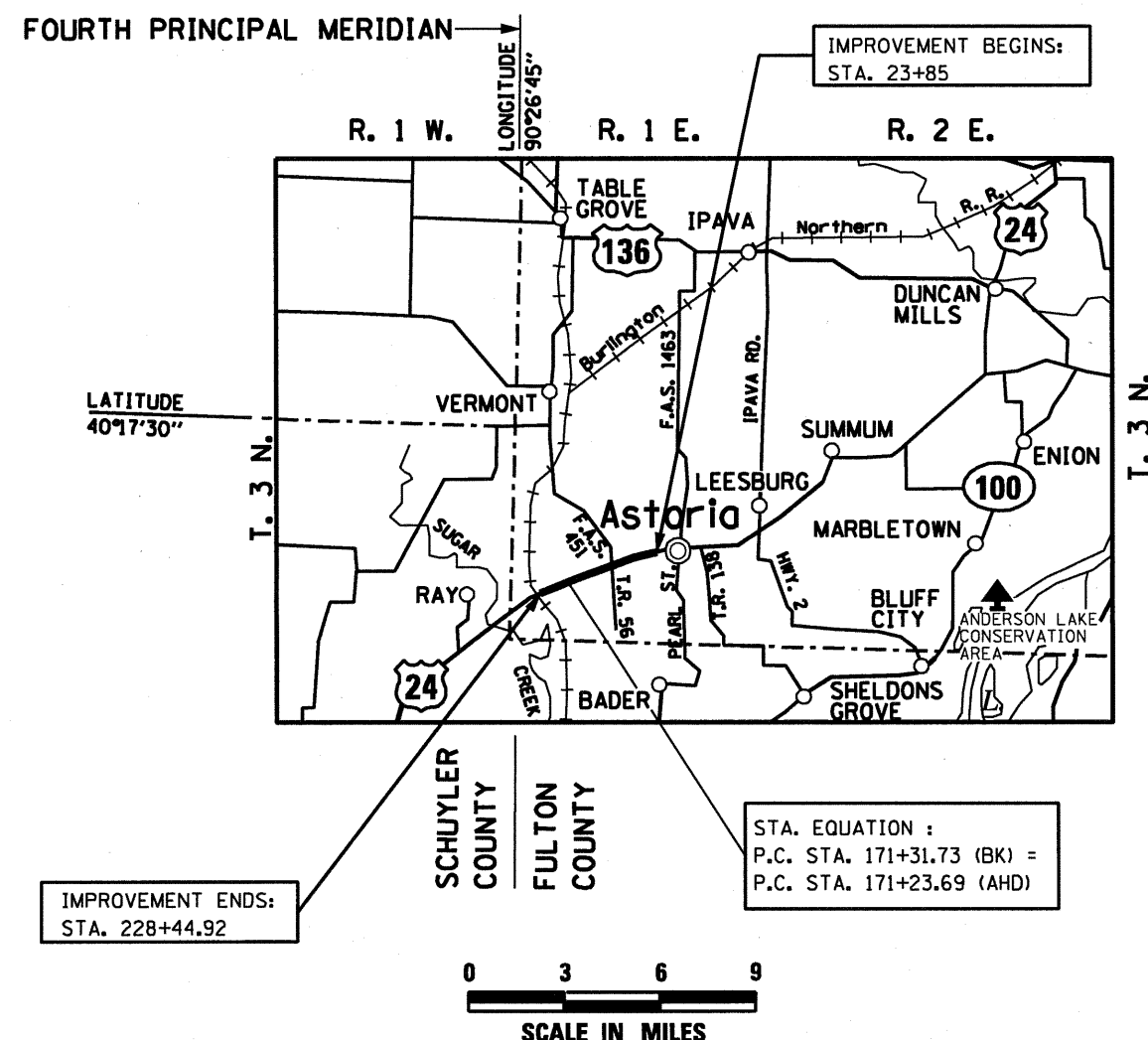
J.U.L.I.E.
JOINT UTILITY LOCATION INFORMATION FOR EXCAVATION
1-800-892-0123
OR 811

PROJECT ENGINEER: RICH DOTSON (309) 671-3455
DESIGN ENGINEER: KEVIN HORST (309) 671-3472

SURVEY BOOK NO. 2893
CATALOG NO. - 030101 - 01D
CONTRACT NO. 88098

STATE OF ILLINOIS
DEPARTMENT OF TRANSPORTATION
DIVISION OF HIGHWAYS
**PROPOSED
HIGHWAY PLANS**

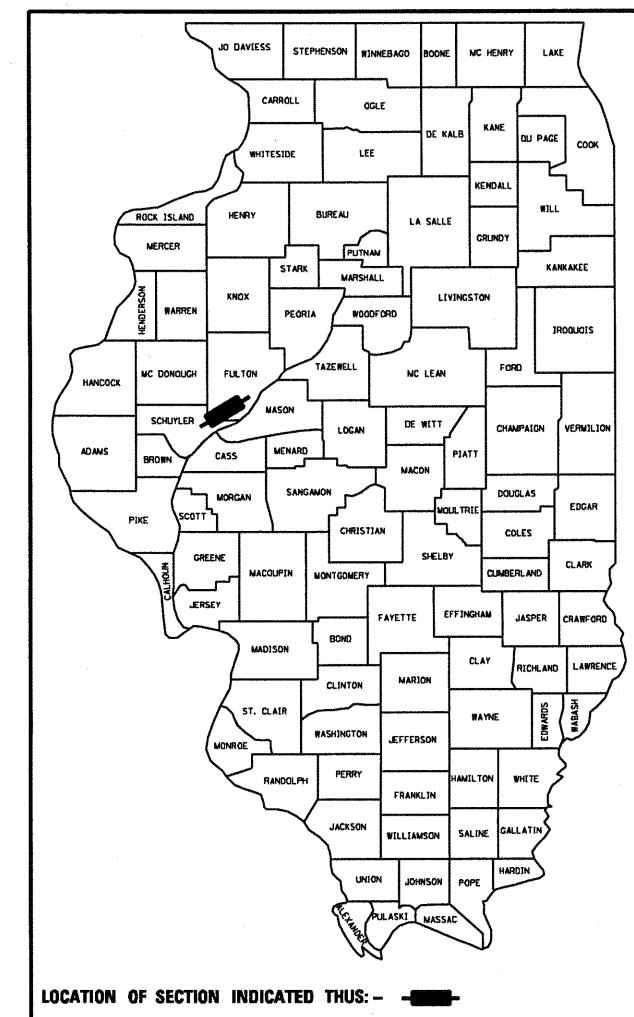
F.A.P. ROUTE 317 (U.S. 24)
SECTION 15W-2,RS-3;16W-3,RS-5
PROJECT ACNHF-0317(08S)
FULTON COUNTY
C-94-324-89



GROSS LENGTH OF IMPROVEMENT = 20,467.96 FEET (3.877 MILES)
NET LENGTH OF IMPROVEMENT = 20,467.96 FEET (3.877 MILES)

F.A.P. RTE.	SECTION	COUNTY	TOTAL SHEETS	SHEET NO.
317	15W-2,RS-3;16W-3,RS-5	FULTON	171	1
FED. ROAD DIST. NO. 4	ILLINOIS	CONTRACT NO. 88098		

D-94-033-89



DESCRIPTION OF WORK :

THE PROPOSED IMPROVEMENT CONSISTS OF MILLING, PATCHING AND
RESURFACING OF THE EXISTING PAVEMENT AND THE RE-GRADING OF DITCHES.
ALSO INCLUDED IN THIS PROJECT ARE CULVERT REPAIRS, EXTENSIONS AND
REPLACEMENTS.

STATE OF ILLINOIS
DEPARTMENT OF TRANSPORTATION
DIVISION OF HIGHWAYS
SUBMITTED 8/12/10
DEPUTY DIRECTOR OF HIGHWAYS, REGION ENGINEER
October 1 2010
Scott E. Still, P.E.
acting ENGINEER OF DESIGN AND ENVIRONMENT
October 1 2010
Christine M. Reed, P.E.
DIRECTOR OF HIGHWAYS, CHIEF ENGINEER

PRINTED BY THE AUTHORITY
OF THE STATE OF ILLINOIS