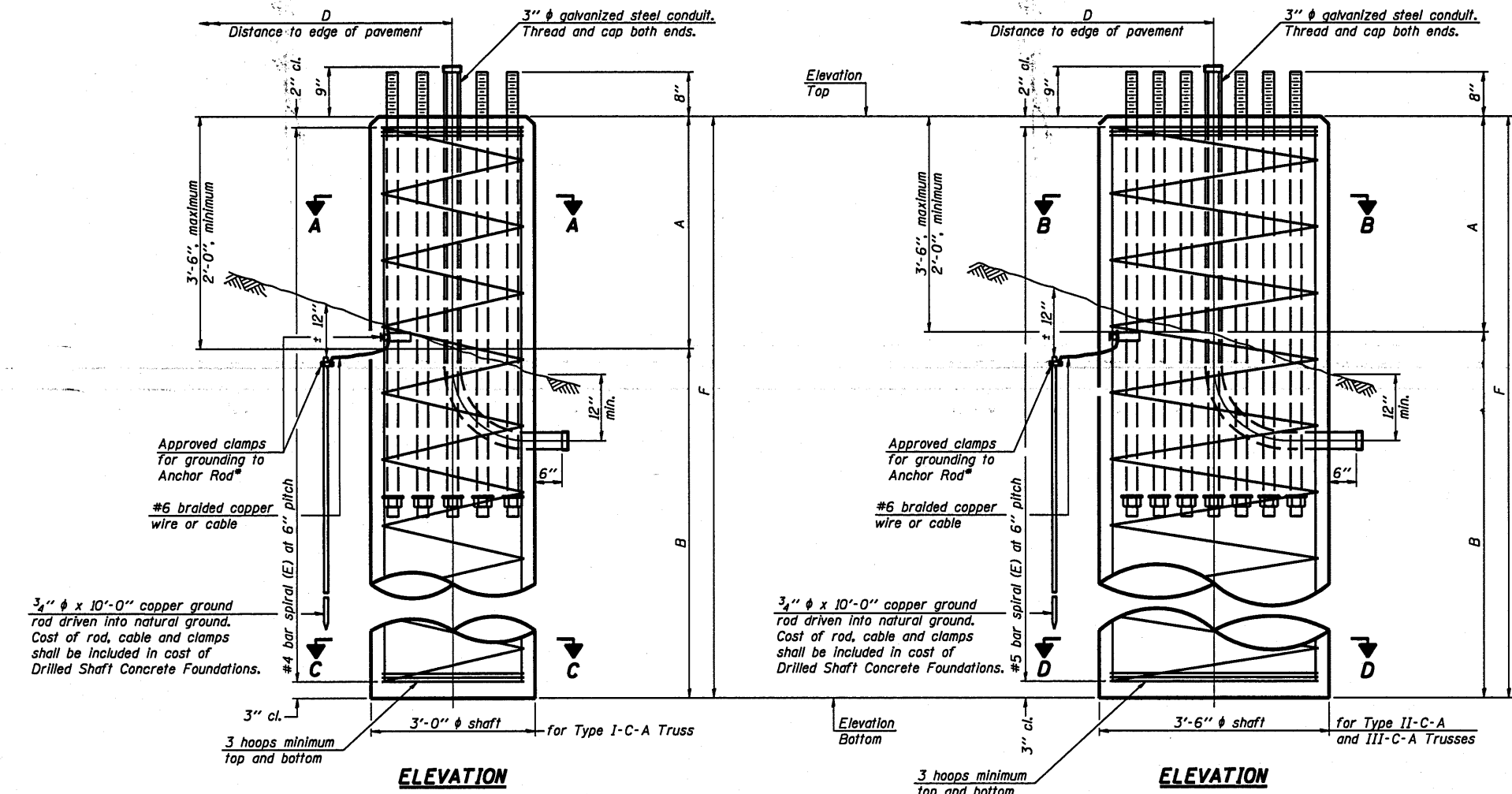


\* Grind anchor rod to bright finish at ground clamp location before installing clamp.

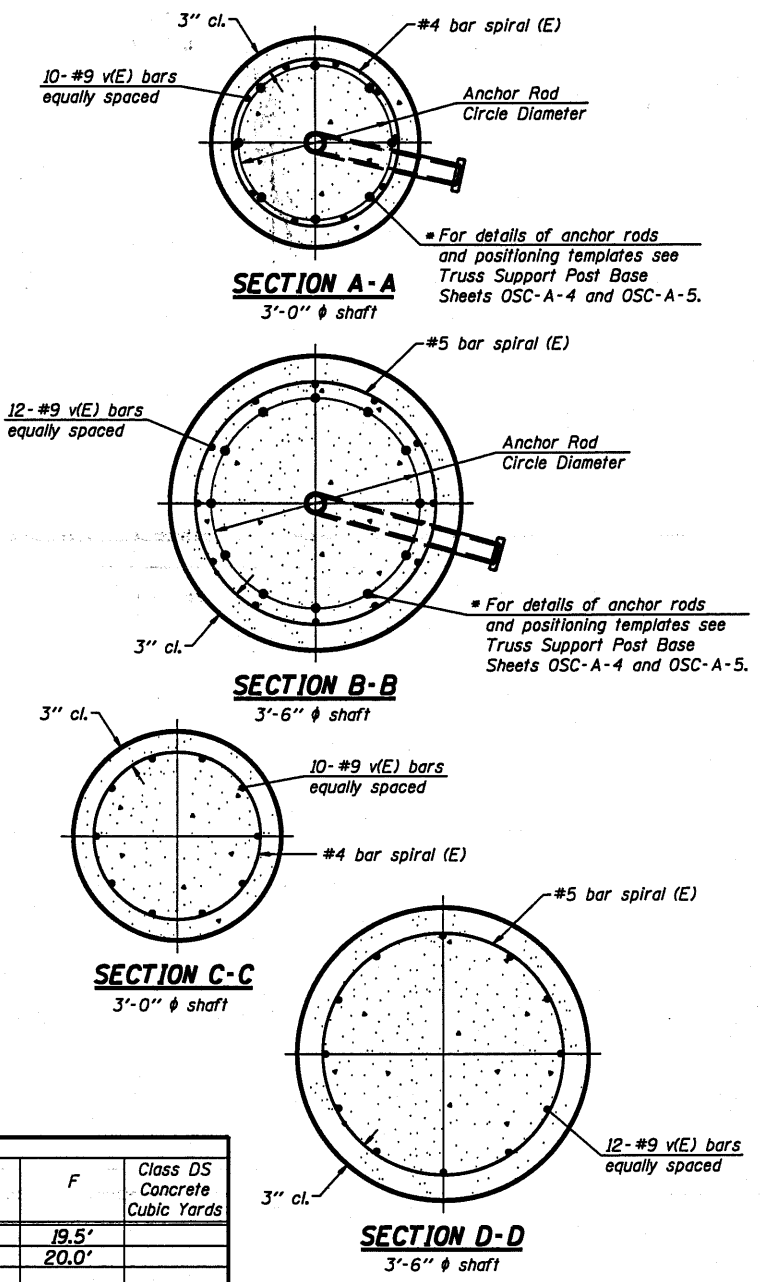


**NOTES:**  
The foundation dimensions shown in the Foundation Design Table are based on the presence of mostly cohesive soils with an average Unconfined Compressive Strength (Qu) of at least 1.25 tsf, which must be determined by previous soil investigations at the jobsite. When other conditions are indicated, the boring data will be included in the plans and the foundation dimensions shown in the Foundation Data Table will be the result of site specific designs.  
If the conditions encountered are different than those indicated, the Contractor shall notify the Engineer to determine if the foundation dimensions need to be modified. If dimensions "B" or "F" are revised by more than 12" by the Contractor, "as-built" plans shall be prepared and submitted to the District Bureau of Operations for future reference.  
No sonotubes or decomposable forms shall be used below the lower conduit entrance. Permanent metal forms or other shielding may not be left in place below that elevation without the Engineer's written permission.  
Concrete shall be placed monolithically, without construction joints.  
Backfill shall be placed per Article 502 of Standard Specification and prior to erection of support column.  
A normal surface finish followed by a Bridge Seat Sealer application will be required on concrete surfaces above the lowest elevation 6" below finished ground line. Cost included in "Drilled Shaft Concrete Foundation".

1. Benchmark 100.00 is on top of the steel base plate of the existing sign support.  
2. Benchmark 100.00 is on top of the steel base plate of the existing sign support.

FOUNDATION DATA TABLE										
Structure Number	Station	Truss Type	Shaft Diameter	Elevation Top	Elevation Bottom	Qu	A	B	F	Class DS Concrete Cubic Yards
2C081S092R028.8	376+96	II-C-A	3' 6"				2.5'	17'	19.5'	
2C101S251R010.7	161+48	II-C-A	3' 6"				3.0'	17'	20.0'	

FOUNDATION DESIGN TABLE									
Truss Type	Post Base Sheet	Maximum Cantilever Length (ft)	Maximum Total Sign Area (sq ft)	Shaft Diameter (in)	"B" Depth (ft)	Anchor Rods		Anchor Rod Circle Diameter (in)	
						No.	Diameter (in)		
I-C-A	OSC-A-4	25	170	3.0	16.0	8	2	22	
II-C-A	OSC-A-5	30	170	3.5	17.0	12	2	30	
II-C-A	OSC-A-5	30	340	3.5	21.5	12	2	30	
III-C-A	OSC-A-5	35	170	3.5	19.0	12	2	30	
III-C-A	OSC-A-5	35	250	3.5	22.5	12	2	30	
III-C-A	OSC-A-5	35	400	3.5	26.5	12	2	30	
III-C-A	OSC-A-5	40	400	3.5	32.0	12	2	30	



**CANTILEVER SIGN STRUCTURES  
DRILLED SHAFT  
ALUMINUM TRUSS & STEEL POST**

FILE NAME =	USER NAME = linkedj	DESIGNED -	REVISD -	DISTRICT 2 SIGN STRUCTURE REPLACEMENT		F.A. RTE.	SECTION	COUNTY	TOTAL SHEETS	SHEET NO.
G:\BYSIGN TRUSS\CADD Plans\2011 contract\2011 plans\sign		DRAWN -	REVISD -			*	**	VARIOUS	27	24
PLOT SCALE = 1/8"=1'-0"		CHECKED -	REVISD -	SCALE: _____ SHEET NO. ____ OF ____ SHEETS STA. _____ TO STA. _____		CONTRACT NO. 46132				
PLOT DATE = Tue Aug 03 06:49:54 2010		DATE -	REVISD -			ILLINOIS FED. AID PROJECT				

OSC-A-9 12-1-08

STATE OF ILLINOIS  
DEPARTMENT OF TRANSPORTATION