

VILLAGE OF EAST ALTON
 FOR UTILITY LOCATION PURPOSES, THIS PROJECT IS LOCATED IN
 NW QUARTER OF SECTION 21, TOWNSHIP 5 NORTH, RANGE 9 WEST
 OF THE THIRD PRINCIPAL MERIDIAN.

UTILITY INFORMATION CAN BE OBTAINED BY
 CALLING J.U.L.I.E. AT (800) 892-0123

THE FOLLOWING UTILITY COMPANIES HAVE FACILITIES
 WITHIN THE LIMITS OF THIS PROJECT:

AMEREN IP 2800 N. CENTER STREET MARYVILLE, ILLINOIS 62062 (618) 346-1273 (GAS)
 AT&T 203 GOETHE COLLINSVILLE, ILLINOIS 62234 (618) 346-6400

AMEREN UE 700 OAKWOOD AVENUE ALTON, ILLINOIS 62002 (618) 463-4051 (ELECTRIC)
 VILLAGE OF EAST ALTON STREET DEPT. 119 WEST MAIN EAST ALTON, ILLINOIS 62024 (618) 258-7522

CHARTER COMMUNICATIONS 4767 SIGNATURE INDUSTRIAL DR. EDWARDSVILLE, ILLINOIS 62025 (618) 779-4179
 VILLAGE OF EAST ALTON WATER DEPT. 119 WEST MAIN EAST ALTON, ILLINOIS 62024 (618) 258-4846
 VILLAGE OF EAST ALTON SEWER DEPT. 119 WEST MAIN EAST ALTON, ILLINOIS 62024 (618) 254-2728

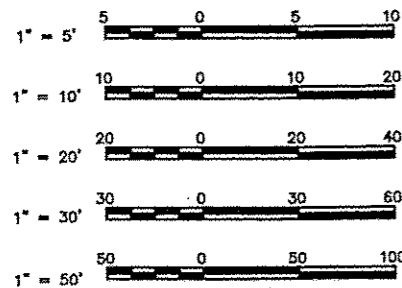
INDEX TO SHEETS

1. COVER SHEET
2. GENERAL NOTES, LEGENDS & CONTROL POINTS
3. SUMMARY OF QUANTITIES
4. EXISTING AND PROPOSED TYPICAL SECTIONS
- 5.-8. PLAN AND PROFILE
9. TRAFFIC CONTROL PLAN
10. PAVEMENT MARKING PLAN
- 11.-13. CONSTRUCTION DETAILS

HIGHWAY STANDARDS

424001-08	701006-05
424006-02	701011-04
424011-02	701301-04
424021-03	701501-06
424026-01	701801-06
442201-03	701901-05
602301-04	720001-01
602601-04	720006-04
602701-02	728001-01
604001-04	780001-05
606001-06	

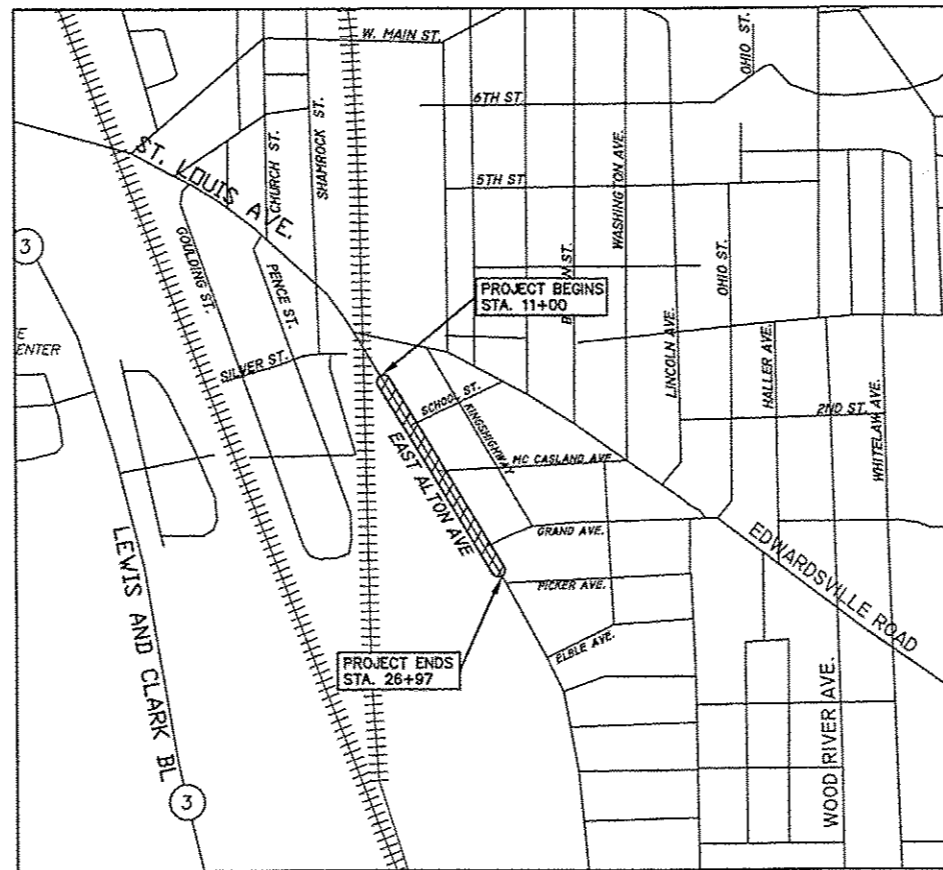
SCALES



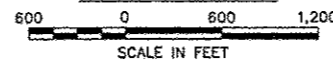
FULL SIZE PLANS HAVE BEEN PREPARED USING STANDARD
 ENGINEERING SCALES. REDUCED SIZED PLANS WILL NOT
 CONFORM TO STANDARD SCALES. IN MAKING MEASUREMENTS
 ON REDUCED PLANS THE ABOVE SCALES MAY BE USED.

FUNCTIONAL CLASSIFICATION: URBAN MAJOR COLLECTOR
 DESIGN SPEED = 35 M.P.H.

STATE OF ILLINOIS 11-4-2016 LETTING ITEM 109
DEPARTMENT OF TRANSPORTATION
DIVISION OF HIGHWAYS
FEDERAL AID HIGHWAY
EAST ALTON AVENUE
 SECTION-14-00049-00-RS
 FAU ROUTE 9005
 PROJECT M-5011 (418)
 VILLAGE OF EAST ALTON, ILLINOIS
 MADISON COUNTY
 JOB C-98-336-14



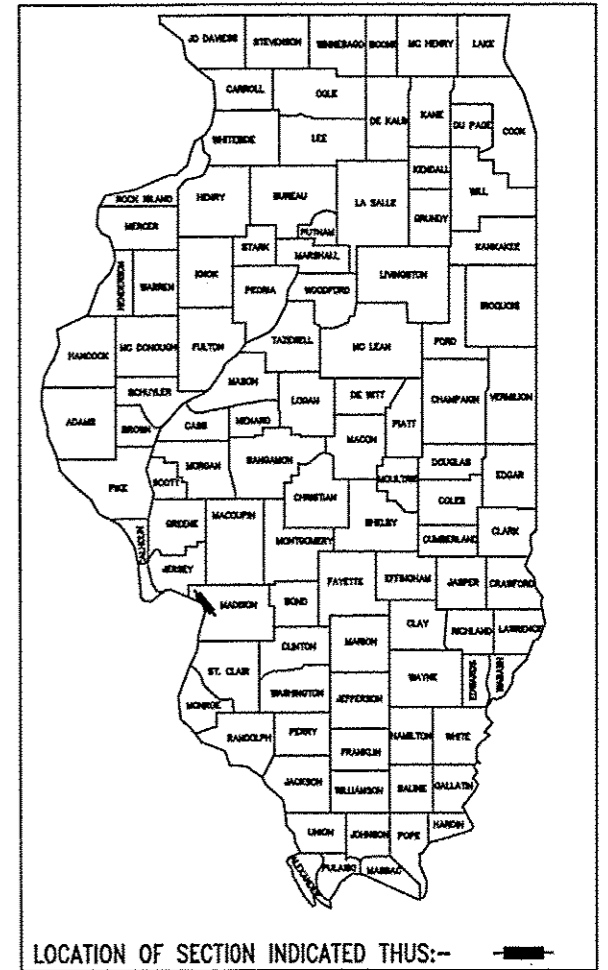
LOCATION MAP



LENGTH OF PROJECT = 1,597 FEET = 0.302 MILES

SMS ENGINEERS Sheppard Morgan & Schwaab, Inc.
 CONSULTING ENGINEERS & LAND SURVEYORS
 215 Market Street
 Alton, Illinois 62002
 618/482-9756

SECTION	COUNTY	TOTAL SHEETS	SHEET NO.
14-00049-00-RS	MADISON	13	1
FEDERAL AID PROJECT		CONTRACT NO. 97624	



LOCATION OF SECTION INDICATED THIS:--

STATE OF ILLINOIS
 DEPARTMENT OF TRANSPORTATION

APPROVED: *Joe Silkwood* 7/22/16 2016
 MAYOR JOE SILKWOOD

PASSED: *Jeffrey Keirn* 8/19/16 2016
 DISTRICT 8 ENGINEER OF LOCAL ROADS & STREETS

RELEASING FOR BID
 BASED UPON LIMITED
 REVIEW: *Jeffrey Keirn* 8/19/16 2016
 JEFFREY KEIRN, P.E.
 DEPUTY DIRECTOR OF HIGHWAYS
 REGION FIVE ENGINEER

STATE OF ILLINOIS
 DEPARTMENT OF TRANSPORTATION
 PRINTED BY AUTHORITY OF THE STATE OF ILLINOIS



David E. Godar

DATE SIGNED 7-21-16
 EXPIRATION DATE 11-30-17

CODE NO.	CONSTRUCTION TYPE CODE ITEM	0005	
		UNIT	QUANTITY
20201200	REMOVAL AND DISPOSAL OF UNSUITABLE MATERIAL	CU YD	10
31101000	SUBBASE GRANULAR MATERIAL, TYPE B	TON	20
40201000	AGGREGATE FOR TEMPORARY ACCESS	TON	241
40600290	BITUMINOUS MATERIALS (TACK COAT)	POUND	3,295
40600635	LEVELING BINDER (MACHINE METHOD), N70	TON	615
40600990	TEMPORARY RAMP	SQ YD	440
40603540	POLYMERIZED HOT-MIX ASPHALT SURFACE COURSE, MIX "D", N70	TON	615
40800050	INCIDENTAL HOT-MIX ASPHALT SURFACING	TON	42
42300200	PORTLAND CEMENT CONCRETE DRIVEWAY PAVEMENT, 6 INCH	SQ YD	158
42300400	PORTLAND CEMENT CONCRETE DRIVEWAY PAVEMENT, 8 INCH	SQ YD	374
42400100	PORTLAND CEMENT CONCRETE SIDEWALK 4 INCH	SQ FT	7,504
42400800	DETECTABLE WARNINGS	SQ FT	62
44000100	PAVEMENT REMOVAL	SQ YD	5.8
44000161	HOT-MIX ASPHALT SURFACE REMOVAL, 3"	SQ YD	7,344
44000200	DRIVEWAY PAVEMENT REMOVAL	SQ YD	611
44000500	COMBINATION CURB AND GUTTER REMOVAL	FOOT	625
44000600	SIDEWALK REMOVAL	SQ FT	6,625
44201333	CLASS C PATCHES, TYPE III, 8 INCH	SQ YD	23.2
44201773	CLASS D PATCHES, TYPE I, 11 INCH	SQ YD	8.4
44201777	CLASS D PATCHES, TYPE II, 11 INCH	SQ YD	12.3
50901760	PIPE HANDRAIL	FOOT	46.5
60255800	MANHOLES TO BE ADJUSTED WITH NEW TYPE 1 FRAME, CLOSED LID	EACH	1
60605000	COMBINATION CONCRETE CURB AND GUTTER, TYPE B-6.24	FOOT	625
67000500	ENGINEER'S FIELD OFFICE, TYPE B	CAL MO	3
67100100	MOBILIZATION	LSUM	1
70300100	SHORT TERM PAVEMENT MARKING	FOOT	432
70300150	SHORT TERM PAVEMENT MARKING REMOVAL	SQ FT	144
70300210	TEMPORARY PAVEMENT MARKING LETTERS AND SYMBOLS	SQ FT	67.3

CODE NO.	CONSTRUCTION TYPE CODE ITEM	0005	
		UNIT	QUANTITY
70300220	TEMPORARY PAVEMENT MARKING - LINE 4"	FOOT	3,563
70300240	TEMPORARY PAVEMENT MARKING - LINE 6"	FOOT	37
70300260	TEMPORARY PAVEMENT MARKING - LINE 12"	FOOT	280
70300280	TEMPORARY PAVEMENT MARKING - LINE 24"	FOOT	55
72000100	SIGN PANEL - TYPE 1	SQ FT	4
72400310	REMOVE SIGN PANEL	SQ FT	3
72800100	TELESCOPING STEEL SIGN SUPPORT	FOOT	27
* 78000100	THERMOPLASTIC PAVEMENT MARKING - LETTERS AND SYMBOLS	SQ FT	67.3
* 78000200	THERMOPLASTIC PAVEMENT MARKING - LINE 4"	FOOT	3,563
* 78000400	THERMOPLASTIC PAVEMENT MARKING - LINE 6"	FOOT	37
* 78000600	THERMOPLASTIC PAVEMENT MARKING - LINE 12"	FOOT	280
* 78000650	THERMOPLASTIC PAVEMENT MARKING - LINE 24"	FOOT	55
X0301339	REMOVE EXISTING PARKING BLOCKS	EACH	20
X0327980	PAVEMENT MARKING REMOVAL - WATER BLASTING	SQ FT	1,515
X0350810	BOLLARD REMOVAL	EACH	2
X4020900	AGGREGATE SURFACE COURSE, TYPE B SPECIAL	SQ YD	66
X4400196	HOT-MIX ASPHALT SURFACE REMOVAL, SPECIAL	SQ YD	92
X6023502	INLETS, TYPE A, WITH SALVAGED FRAME AND LID	EACH	4
X6024240	INLETS, SPECIAL	EACH	8
X6025600	MANHOLES TO BE ADJUSTED (SPECIAL)	EACH	2
X6025800	MANHOLES TO BE ADJUSTED WITH NEW TYPE 1 FRAME, CLOSED LID, SPECIAL	EACH	2
X6026051	SANITARY MANHOLES TO BE RECONSTRUCTED	EACH	1
X6026056	SANITARY MANHOLES TO BE ADJUSTED WITH NEW TYPE 1 FRAME, CLOSED LID	EACH	3
X6028300	INLETS TO BE REMOVED, SPECIAL	EACH	12
X7010216	TRAFFIC CONTROL AND PROTECTION, (SPECIAL)	LSUM	1

* DENOTES SPECIALTY ITEM

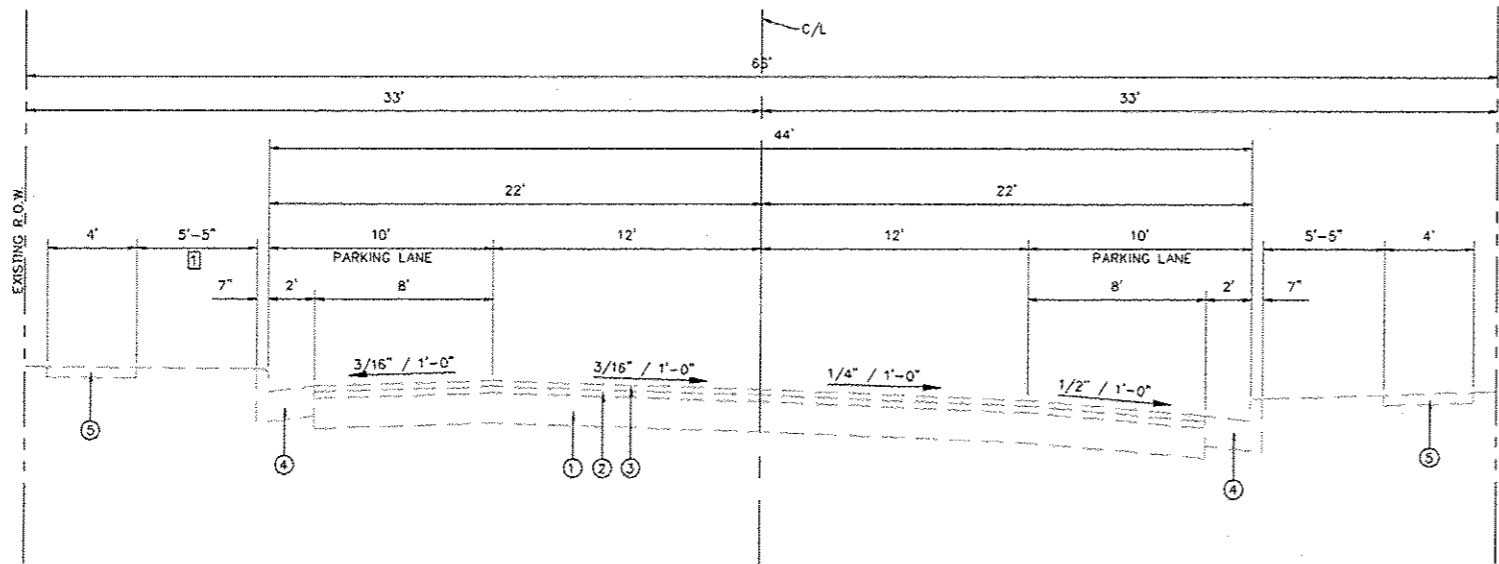
REVISIONS									
-----------	--	--	--	--	--	--	--	--	--

SMS Sheppard, Morgan & Schwaab, Inc.
 CONSULTING ENGINEERS AND LAND SURVEYORS
 125 Maple Street, Alton, IL 62002 618-242-0975 Email: info@smsengineers.com
 DESIGN FIRM # 184-00892
ENGINEERS

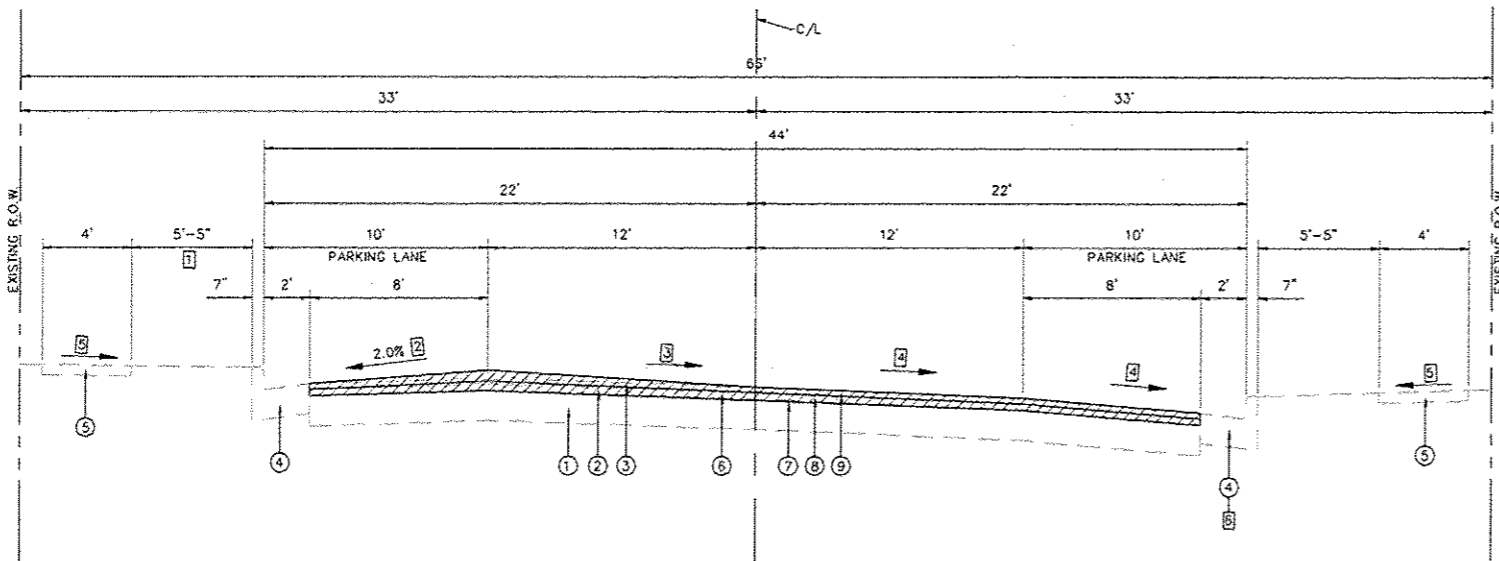
VILLAGE OF EAST ALTON, ILLINOIS
 SECTION 14-00049-00-RS
 EAST ALTON AVENUE
 SUMMARY OF QUANTITIES

CONTRACT NO. 97624	
EA AVE SUM QUAN.DWG	
REF. DK.	PG.
JOB NO. 428892.1	
DSN. BY: DEG	
DWN. BY: CDG	
CHK. BY: DEG	
DATE: JUNE, 2016	
SCALE: NONE	
SHEET	3 OF 13

Q:\001_30 PROJECTS\14-00049-00-RS\14-00049-00-RS\SUBQUAN.DWG 5/16/2016 11:30:34 AM Export: 11



**EXISTING TYPICAL SECTION
EAST ALTON AVENUE**
STA. 11+00 TO STA. 26+97



**PROPOSED TYPICAL SECTION
EAST ALTON AVENUE**
STA. 11+00 TO STA. 26+97

TYPICAL SECTION NOTES

- 1 THE EXISTING P.C.C. SIDEWALK IS LOCATED AT THE BACK OF THE CURB ON THE LEFT SIDE SOUTH OF GRAND AVE. STA. 25+00 TO STA. 26+97
- 2 HOLD 3" REMOVAL DEPTH AT EDGE OF PAVEMENT AND 2.0% CROSS SLOPE
- 3 MATCH REMOVAL DEPTH ON LEFT AND HOLD 3" REMOVAL DEPTH AT C/L
- 4 HOLD 3" REMOVAL DEPTH AND MATCH EXISTING CROSS SLOPE. PAVEMENT AND PARKING LANE CROSS SLOPE SHALL BE 1.50% IN HANDICAPPED PARKING AREA, STA. 13+18 TO STA. 14+03. SEE DETAIL ON SHEET 13 FOR SPOT ELEVATIONS AND PAVEMENT SLOPES.
- 5 NEW SIDEWALK CROSS SLOPE PERPENDICULAR TO THE DIRECTION OF TRAVEL SHALL BE 1.00% DESIRED WITH 2.00% ABSOLUTE MAXIMUM. THIS INCLUDES THE SIDEWALK SECTION THROUGH NEW DRIVEWAYS. THE ONLY EXCEPTION IS TRANSITION PANELS THAT MEET EXISTING SIDEWALK.
- 6 GUTTER PAN CROSS SLOPE SHALL BE 1.50% IN HANDICAPPED PARKING AREA, STA. 13+18 TO STA. 14+03.

PAVING LEGEND

- 1 EXISTING BITUMINOUS AGGREGATE MIXTURE BASE COURSE, 8"
- 2 EXISTING HMA BINDER COURSE, 1 3/4"
- 3 EXISTING HMA SURFACE COURSE, 1 1/2"
- 4 EXISTING COMB. CONCRETE CURB, TYPE B-6.24
- 5 EXISTING P.C.C. SIDEWALK
- 6 PROPOSED HMA SURFACE REMOVAL, 3" SHOWN AS
- 7 PROPOSED BITUMINOUS MATERIALS (TACK COAT)
- 8 PROPOSED LEVELING BINDER (MACHINE METHOD), N70 (1 1/2")
- 9 PROPOSED POLYMERIZED HMA SURFACE COURSE, MIX "D", N 70 (1 1/2")

MIX DESIGNS

MIXTURE USE	POLY SURFACE	LEVEL BINDER	INCIDENTAL
AC/PG	SBS PG 78-22	PG 64-22	PG 64-22
MAX. RAP %	*	*	*
DESIGN AIR VOIDS	4% @ NDES = 70	4% @ NDES = 70	4% @ NDES = 70
MIX COMPOSITION (GRADATION MIXTURE)	IL-9.5 OR IL-12.5	IL-9.5	----
FRICTION AGG.	MIX D	MIX C	MIX C

* SEE SPECIAL PROVISIONS

SMS ENGINEERS
Sheppard, Morgan & Schwaab, Inc.
CONSULTING ENGINEERS AND LAND SURVEYORS
215 Laurel Street, P.O. Box E, Alton, IL 62002 618/262-3755 Email: ms@smse.com

VILLAGE OF EAST ALTON, ILLINOIS
SECTION 14-00049-00-RS
EAST ALTON AVENUE
TYPICAL SECTIONS

CONTRACT NO. 97624

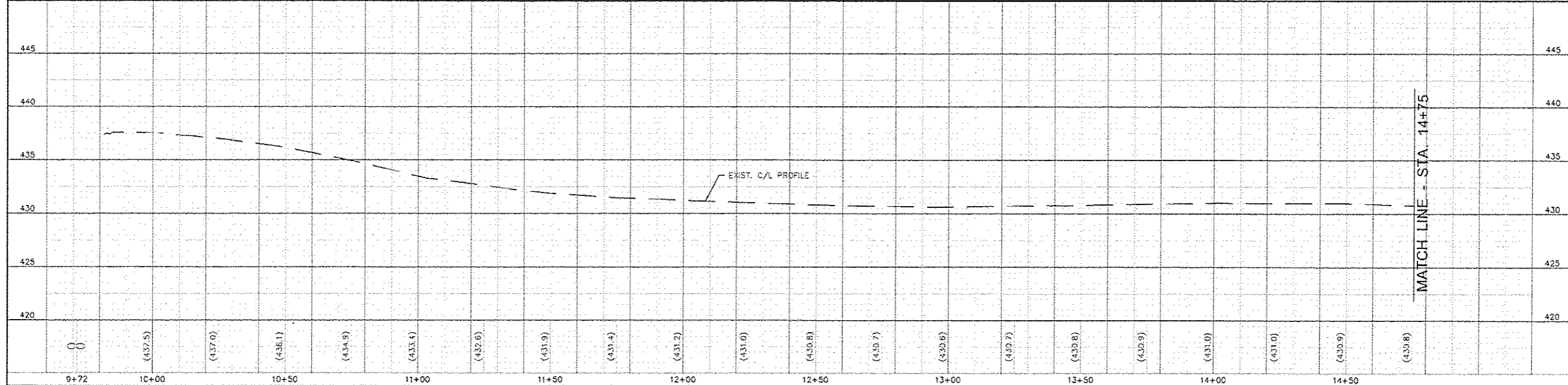
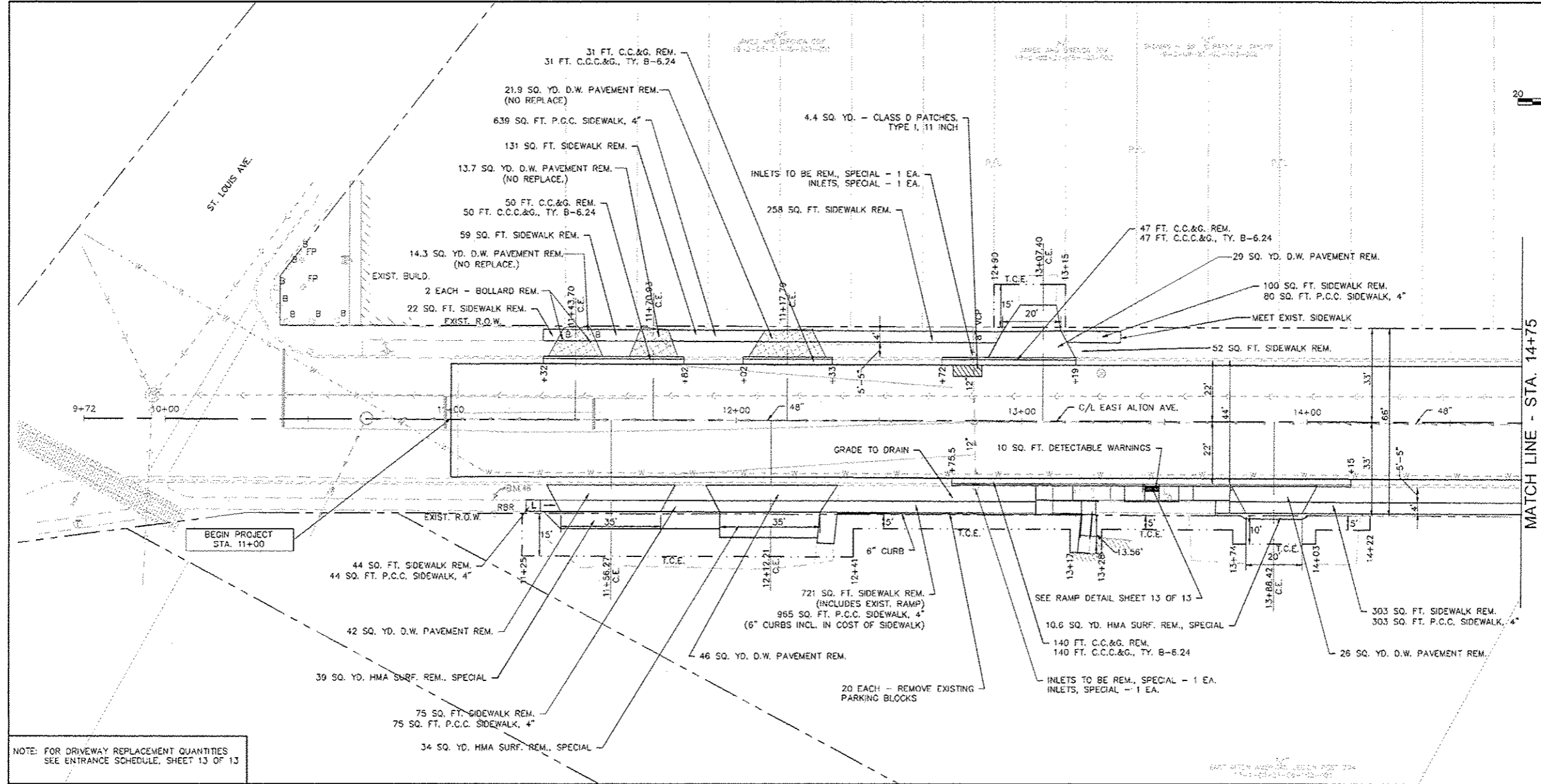
EA AVE TYP.DWG

REF. BY: PG
JOB NO. 428892.1
DSN. BY: DEG
DWN. BY: CDP
CHK. BY: DEC
DATE: JUNE, 2016

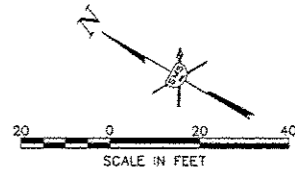
SCALE: 1"=4'

SHEET 4 OF 13

Q:\CIVIL_3D PROJECTS\EA ALTON 428892.1\14-TYPICAL\AVE Production Drawing\EA AVE TYP.DWG, 9/27/2016 1:56:16 PM, cpm@it.11



NOTE: FOR DRIVEWAY REPLACEMENT QUANTITIES SEE ENTRANCE SCHEDULE, SHEET 13 OF 13



REVISIONS

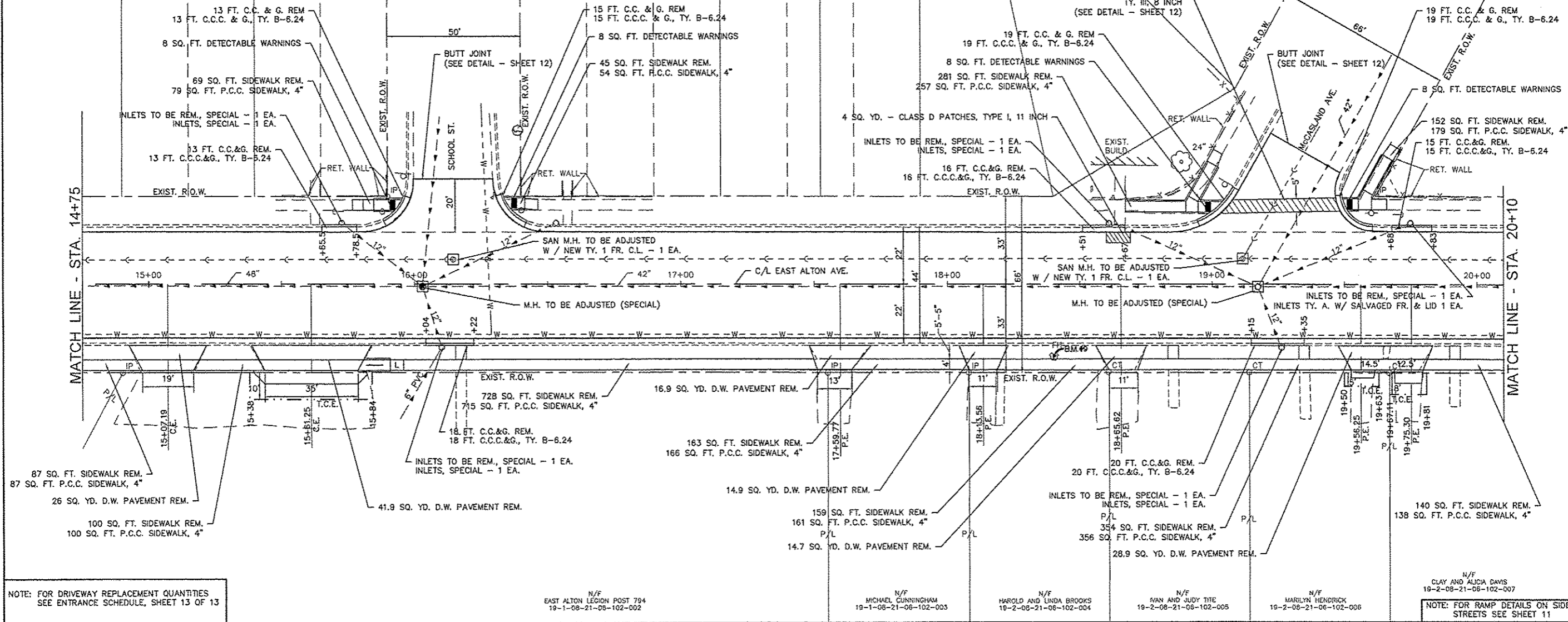
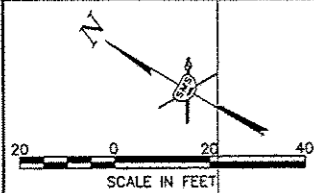
NO.	DATE	DESCRIPTION

SMS Sheppard, Morgan & Schwaab, Inc.
CONSULTING ENGINEERS AND LAND SURVEYORS
255 Market Street, Alton, IL 62822, 618-462-9955, Email: mark@sms-engineers.com
DESIGN FIRM # 184-000992

VILLAGE OF EAST ALTON, ILLINOIS
SECTION 14-00049-00-RS
EAST ALTON AVENUE
PLAN AND PROFILE

CONTRACT NO.	97624
EA AVE PP.DWG	
REF. BK.	PG.
JOB NO.	428892.1
DSN. BY.	DEC
OWN. BY.	CDP
CHK. BY.	DEC
DATE:	JUNE, 2016
SCALE:	HORZ: 1" = 20'
	VERT: 1" = 5'
SHEET	5 OF 13

Q:\DATA\PROJECTS\EA ALTON\PP\Production Drawings\EA AVE PP.dwg, 9/16/2016 11:14:45 AM, cpw, 1:1



NOTE: FOR DRIVEWAY REPLACEMENT QUANTITIES SEE ENTRANCE SCHEDULE, SHEET 13 OF 13

N/F
EAST ALTON LEGION POST 794
19-1-08-21-08-102-002

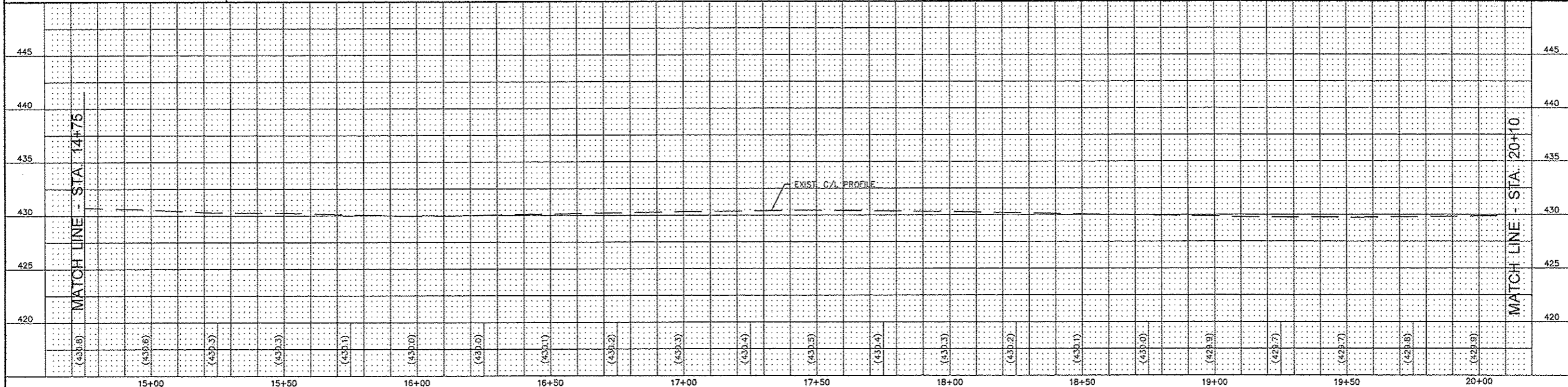
N/F
MICHAEL CUNNINGHAM
19-1-08-21-08-102-003

N/F
HAROLD AND LINDA BROOKS
19-2-08-21-06-102-004

N/F
NAN AND JUDY TITE
19-2-08-21-06-102-005

N/F
MARILYN HENDRICK
19-2-08-21-06-102-006

N/F
CLAY AND ALICIA DAVIS
19-2-08-21-06-102-007
NOTE: FOR RAMP DETAILS ON SIDE STREETS SEE SHEET 11

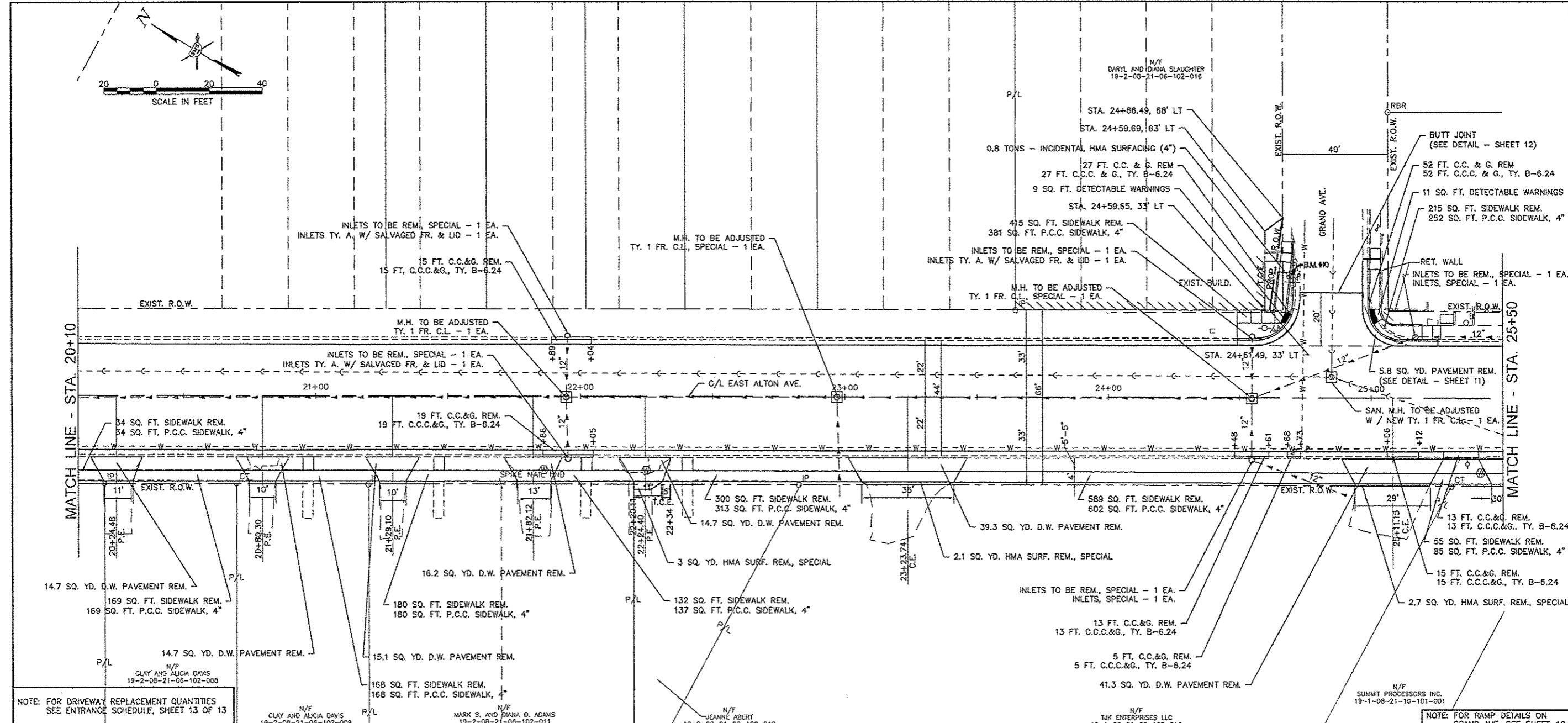
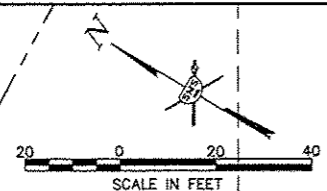


NO.	DESCRIPTION

Sheppard, Morgan & Schwaab, Inc.
CONSULTING ENGINEERS AND LAND SURVEYORS
215 Market Street, Abingdon, IL 62002 618/682-9765 E-mail: ms@smgsheppard.com
DESIGN FIRM # 184-000992

VILLAGE OF EAST ALTON, ILLINOIS
SECTION 14-00049-00-RS
EAST ALTON AVENUE
PLAN AND PROFILE

CONTRACT NO.	97624
EA AVE PP.DWG	
REF. BK.	PG.
JOB NO.	428892.1
DSN. BY:	DEG
DWN. BY:	CDP
CHK. BY:	DEG
DATE:	JUNE, 2018
HORIZ. SCALE:	1" = 20'
VERT. SCALE:	1" = 5'
SHEET	6 OF 13

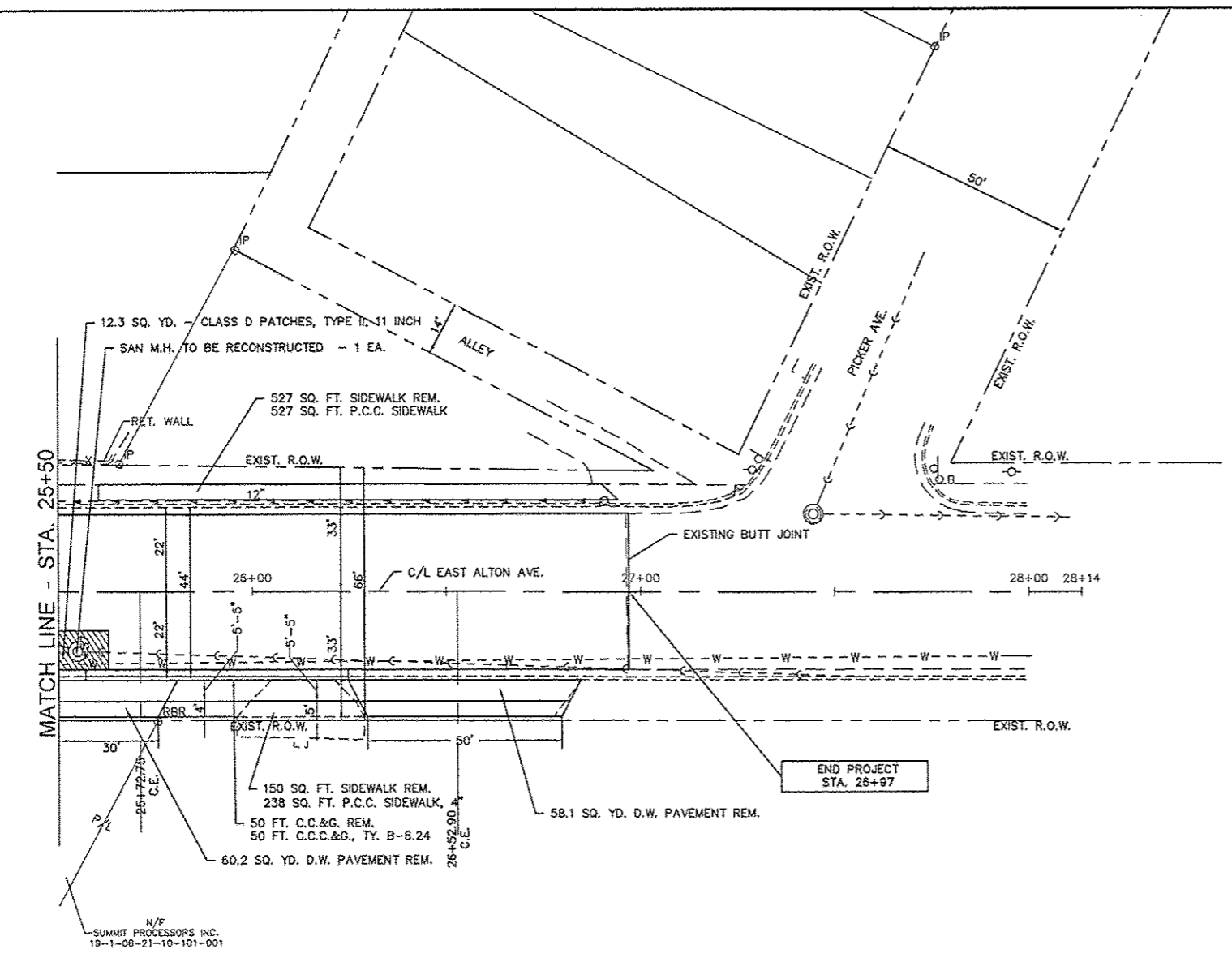
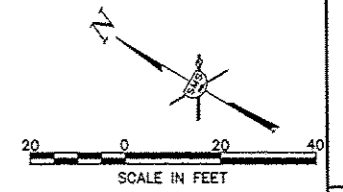


REVISIONS

SMS Sheppard, Morgan & Schwaab, Inc.
 CONSULTING ENGINEERS AND LAND SURVEYORS
 215 Mahmet Street, Alton, IL 62002 618-462-9755 E-mail: mail@smsengineers.com
 DESIGN FIRM # 184-000992

VILLAGE OF EAST ALTON, ILLINOIS
 SECTION 14-00049-00-RS
 EAST ALTON AVENUE
 PLAN AND PROFILE

CONTRACT NO.	97624
EA AVE PP.DWG	
REF. BK.	PG.
JOB NO.	428882.1
DSN. BY:	DEG
DWN. BY:	CDP
CHK. BY:	DEG
DATE:	JUNE, 2016
HORIZ. SCALE:	1" = 20'
VERT. SCALE:	1" = 5'
SHEET	7 OF 13



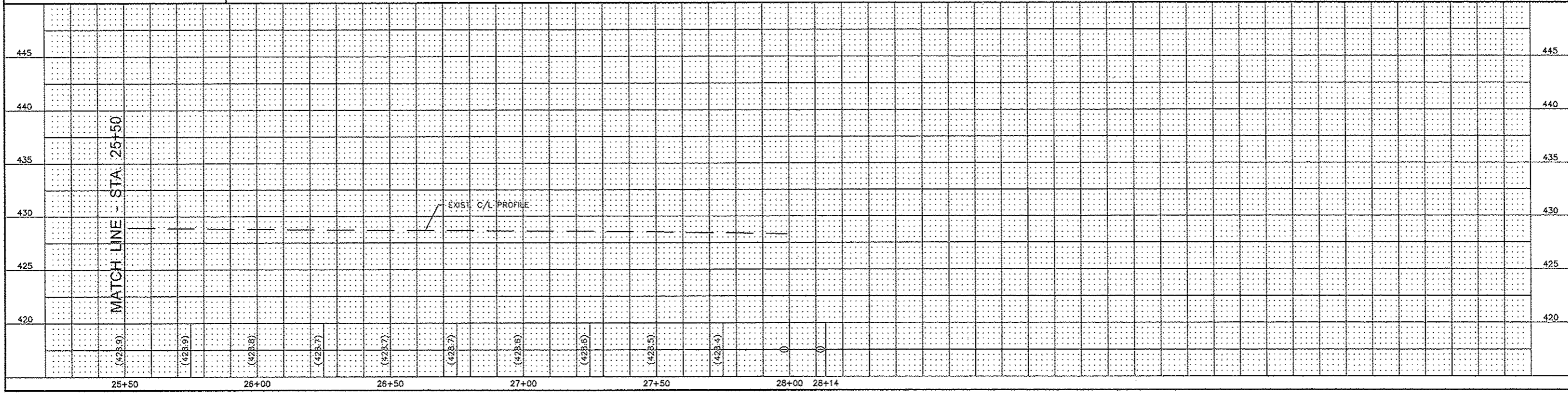
NOTE: FOR DRIVEWAY REPLACEMENT QUANTITIES SEE ENTRANCE SCHEDULE, SHEET 13 OF 13

N/F FEDERAL STEEL & ERECTION CO. 19-1-08-21-10-101-004

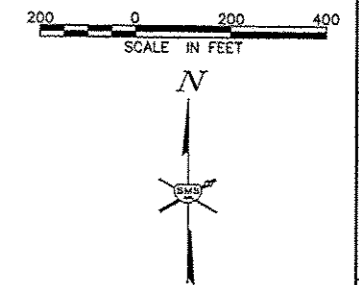
REVISIONS

SMS ENGINEERS
Sheppard, Morgan & Schwaab, Inc.
CONSULTING ENGINEERS AND LAND SURVEYORS
2115 Market Street, Alton, IL 62002 618/692-8755 E-mail: msl@smsengineers.com
DESIGN FIRM # 184-000992

VILLAGE OF EAST ALTON, ILLINOIS
SECTION 14-00049-00-RS
EAST ALTON AVENUE
PLAN AND PROFILE



CONTRACT NO. 97624
EA AVE PP.DWG
REF. BK. PG.
JOB NO. 428892.1
DSN. BY: DEG
DWN. BY: CDP
CHK. BY: DEG
DATE: JUNE, 2016
HORZ: 1" = 20'
SCALE: VERT: 1" = 5'
SHEET 8 OF 13



TRAFFIC CONTROL NOTES

1. THE CONTRACTOR SHALL PROVIDE THE TRAFFIC CONTROL SHOWN ON THE GENERAL TRAFFIC CONTROL PLAN AT ALL TIMES DURING THE CONSTRUCTION OF THIS PROJECT. ADDITIONAL TRAFFIC CONTROL SHALL BE PROVIDED AS SPECIFIED BELOW AND IN ACCORDANCE WITH THE SPECIFIED HIGHWAY STANDARDS.
2. AT TIMES WHEN ALL TRAFFIC LANES ARE OPEN, PROVIDE TRAFFIC CONTROL AS NEEDED PER HIGHWAY STANDARD 701006 AND 701011.
3. ONE TRAFFIC LANE ON E. ALTON AVE. WILL BE ALLOWED TO BE CLOSED AS NEEDED DURING DAY TIME HOURS AS DESCRIBED BELOW:
 - A. FOR SPOT LOCATIONS THAT ARE LESS THAN 1 BLOCK LONG AND FOR 1 HOUR OR LESS, PROVIDE TRAFFIC CONTROL PER HIGHWAY STANDARD 701301.
 - B. FOR SPOT LOCATIONS THAT ARE LESS THAN 1 BLOCK LONG AND MORE THAN 1 HOUR, PROVIDE TRAFFIC CONTROL PER HIGHWAY STANDARD 701501.
 - C. THE EAST ALTON STREET DEPT. WILL POST TEMPORARY "NO PARKING" SIGNS AS NEEDED TO PREVENT PARKING IN WORK AREAS. THE CONTRACTOR SHALL NOTIFY THE STREET DEPT. AND ENGINEER AT LEAST 2 DAYS IN ADVANCE OF THE NEED FOR "NO PARKING" SIGNS.
 - D. DURING PAVEMENT PATCHING OPERATIONS, THE CONTRACTOR SHALL PROVIDE ADDITIONAL CONES, DRUMS OR BARRICADES TO PROTECT EACH PATCH AS DIRECTED BY THE ENGINEER.
4. SIDE STREETS AND ALLEYS SHALL REMAIN OPEN TO TRAFFIC AT ALL TIMES. HOWEVER, MCCASLAND AVE. WILL BE ALLOWED TO BE CLOSED DURING THE CONSTRUCTION OF THE TYPE C PATCH FOR A DURATION APPROVED BY THE ENGINEER. TRAFFIC CONTROL FOR SIDE STREETS AND ALLEYS SHALL BE PROVIDED ACCORDING TO THE SPECIFIED HIGHWAY STANDARDS.
5. FOR SIDEWALK REMOVAL AND REPLACEMENT, TRAFFIC CONTROL FOR SIDEWALK CLOSURES SHALL BE PROVIDED PER HIGHWAY STANDARD 701801. SIDEWALK REMOVAL AND REPLACEMENT SHALL BE SEQUENCED AS MUCH AS POSSIBLE TO ALWAYS ALLOW AN ACCESSIBLE ROUTE TO PRIVATE PROPERTY AND BUSINESSES.
6. WHERE A HIGHWAY STANDARD REQUIRES A "ROAD CONSTRUCTION AHEAD" SIGN, THIS REQUIREMENT WILL BE CONSIDERED FULFILLED BY THE SIGNS REQUIRED ON THE GENERAL TRAFFIC CONTROL PLAN.
7. ALL HAZARDS WITHIN WORK ZONES OPEN TO TRAFFIC SHALL BE PROTECTED WITH TYPE I BARRICADES OR DRUMS WITH FLASHING LIGHTS IF LESS THAN 100' IN LENGTH. IF GREATER THAN 100' IN LENGTH, LIGHTS SHALL BE STEADY BURN.
8. ALL CONSTRUCTION SIGNS SHALL MEET THE REQUIREMENTS OF THE LATEST EDITION OF THE "MANUAL ON UNIFORM TRAFFIC CONTROL DEVICES FOR STREETS AND HIGHWAYS".
9. IF THE CONTRACTOR WISHES TO DEVIATE FROM THIS TRAFFIC CONTROL PLAN, HE SHALL PROVIDE A REVISED TRAFFIC CONTROL PLAN IN WRITING FOR THE REVIEW AND APPROVAL OF THE ENGINEER.

TRAFFIC CONTROL LEGEND

- WORK AREA
- TYPE III BARRICADE WITH REFLECTORIZED STRIPING ON BOTH SIDES WITH FLASHING LIGHTS
- CONE, DRUM OR BARRICADE
- SIGN "ROAD CONSTRUCTION AHEAD" W20-1(0) - 48" x 48" WITH MONODIRECTIONAL FLASHING LIGHT
- SIGN BLACK ARROW ON ORANGE BACKGROUND 24" x 18"
- SIGN BLACK ARROW ON ORANGE BACKGROUND 24" x 18"

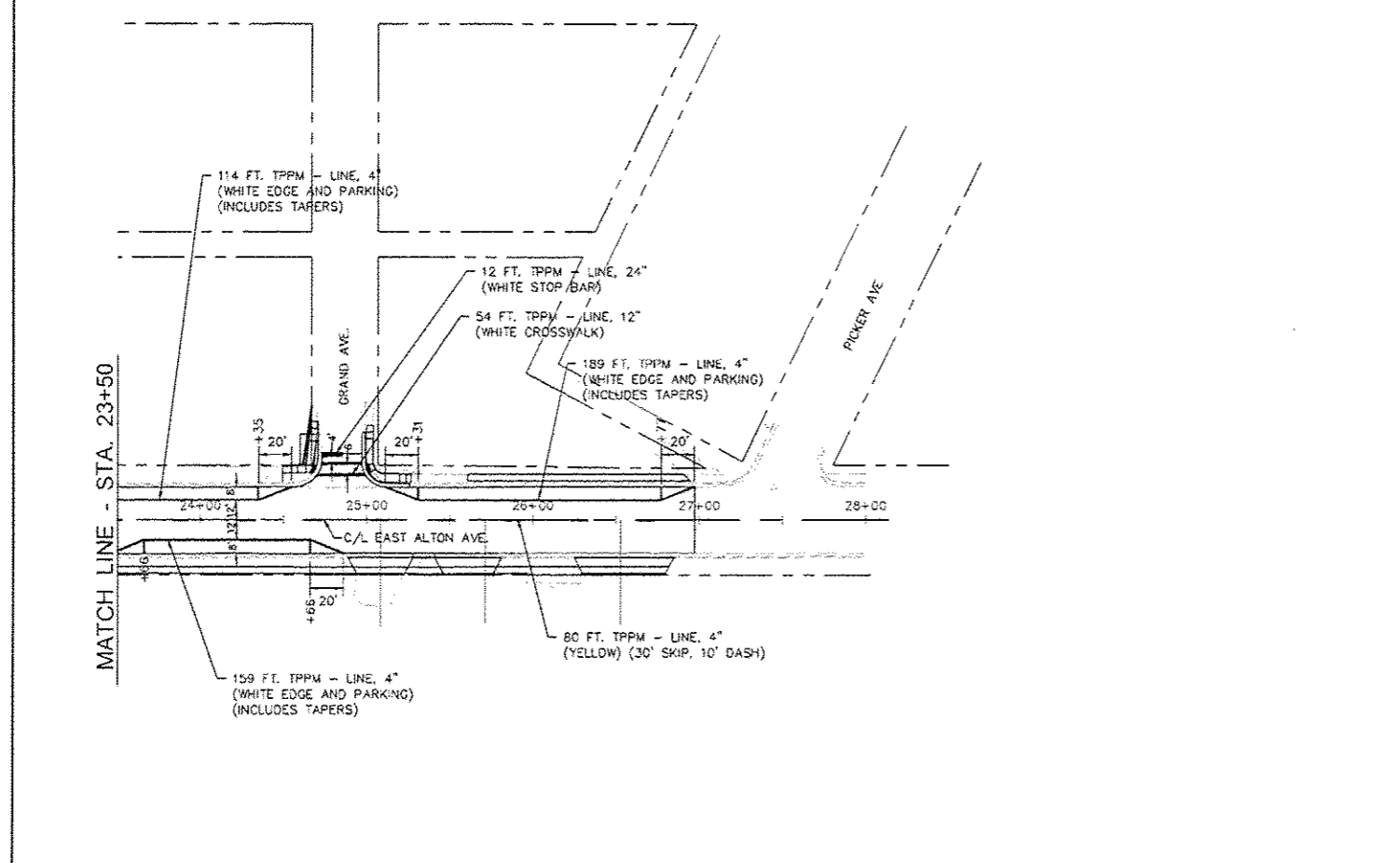
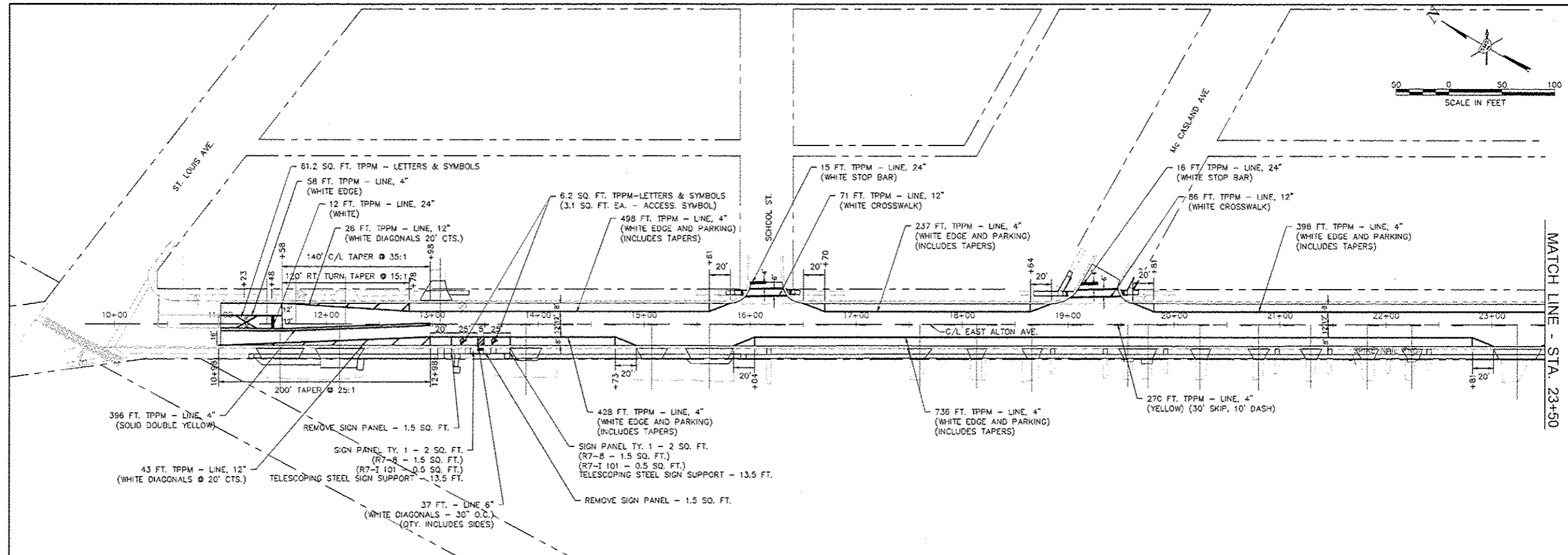
GENERAL TRAFFIC CONTROL PLAN

REVISIONS

SMS Sheppard, Morgan & Schwaab, Inc.
 CONSULTING ENGINEERS AND LAND SURVEYORS
 215 Market Street, Alton, IL 62002 618482-9755 E-mail: mail@smsengineering.com
 DESIGN FIRM # 184-000592

VILLAGE OF EAST ALTON, ILLINOIS
 SECTION 14-00049-00-RS
 EAST ALTON AVENUE
 TRAFFIC CONTROL PLAN

CONTRACT NO.	97624
EA AVE TRAF.DWG	
REF. BK.	PG.
JOB NO.	428892.1
DSN. BY:	DEG
DWN. BY:	CDP
CHK. BY:	DEG
DATE:	JUNE, 2016
SCALE:	1"=200'
SHEET	9 OF 13



PAVEMENT MARKING SCHEDULE

ITEM	QUANTITY	UNIT
THERMOPLASTIC PAVEMENT MARKING - LINE 4" (WHITE)	2,817	FOOT
THERMOPLASTIC PAVEMENT MARKING - LINE 4" (YELLOW)	746	FOOT
TOTAL 4"	3,563	FOOT
THERMOPLASTIC PAVEMENT MARKING - LINE 6" (WHITE)	37	FOOT
TOTAL 6"	37	FOOT
THERMOPLASTIC PAVEMENT MARKING - LINE 12" (WHITE)	280	FOOT
TOTAL 12"	280	FOOT
THERMOPLASTIC PAVEMENT MARKING - LINE 24" (WHITE)	55	FOOT
TOTAL 24"	55	FOOT
THERMOPLASTIC PAVEMENT MARKING - LETTERS AND SYMBOLS (WHITE)	67.3	SQ. FT.
TOTAL LETTERS AND SYMBOLS	67.3	SQ. FT.

NOTES

1. THERMOPLASTIC PAVEMENT MARKING IS ABBREVIATED AS TPPM.
2. PAVEMENT MARKING REMOVAL QUANTITY IN PLANS ONLY NEEDED IF TEMPORARY PAVEMENT MARKING IS USED, AS DIRECTED BY THE ENGINEER.

NO.	DESCRIPTION

MATCH LINE - STA. 23+50

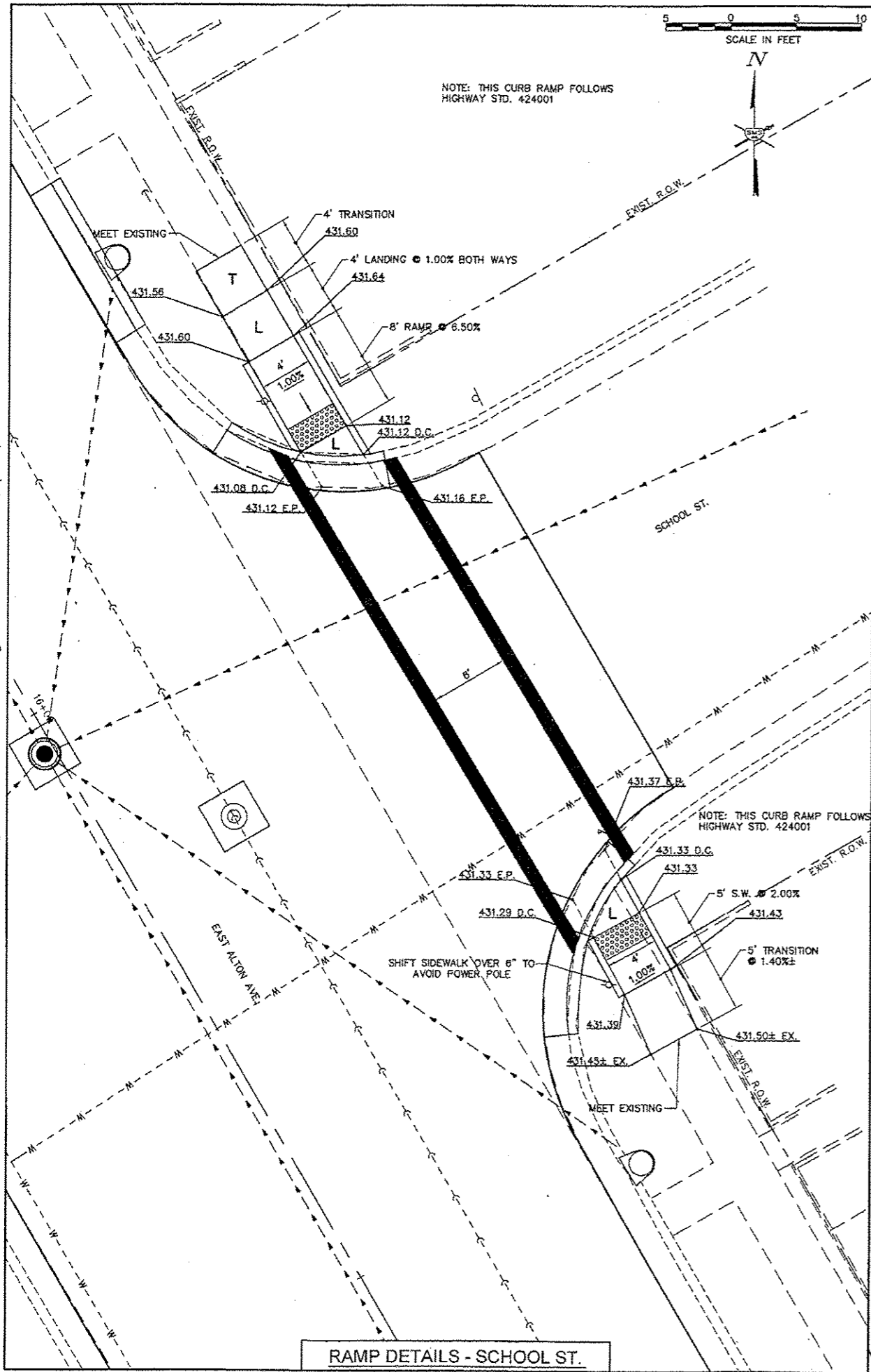
SMS Sheppard, Morgan & Schwaab, Inc.
ENGINEERS
CONSULTING ENGINEERS AND LAND SURVEYORS
215 Mark Street, Alton, IL 62002, 618-462-9755, E-mail: info@smseng.com
DESIGN FIRM # 184-000982

VILLAGE OF EAST ALTON, ILLINOIS
SECTION 14-00049-00-RS
EAST ALTON AVENUE
PAVEMENT MARKING

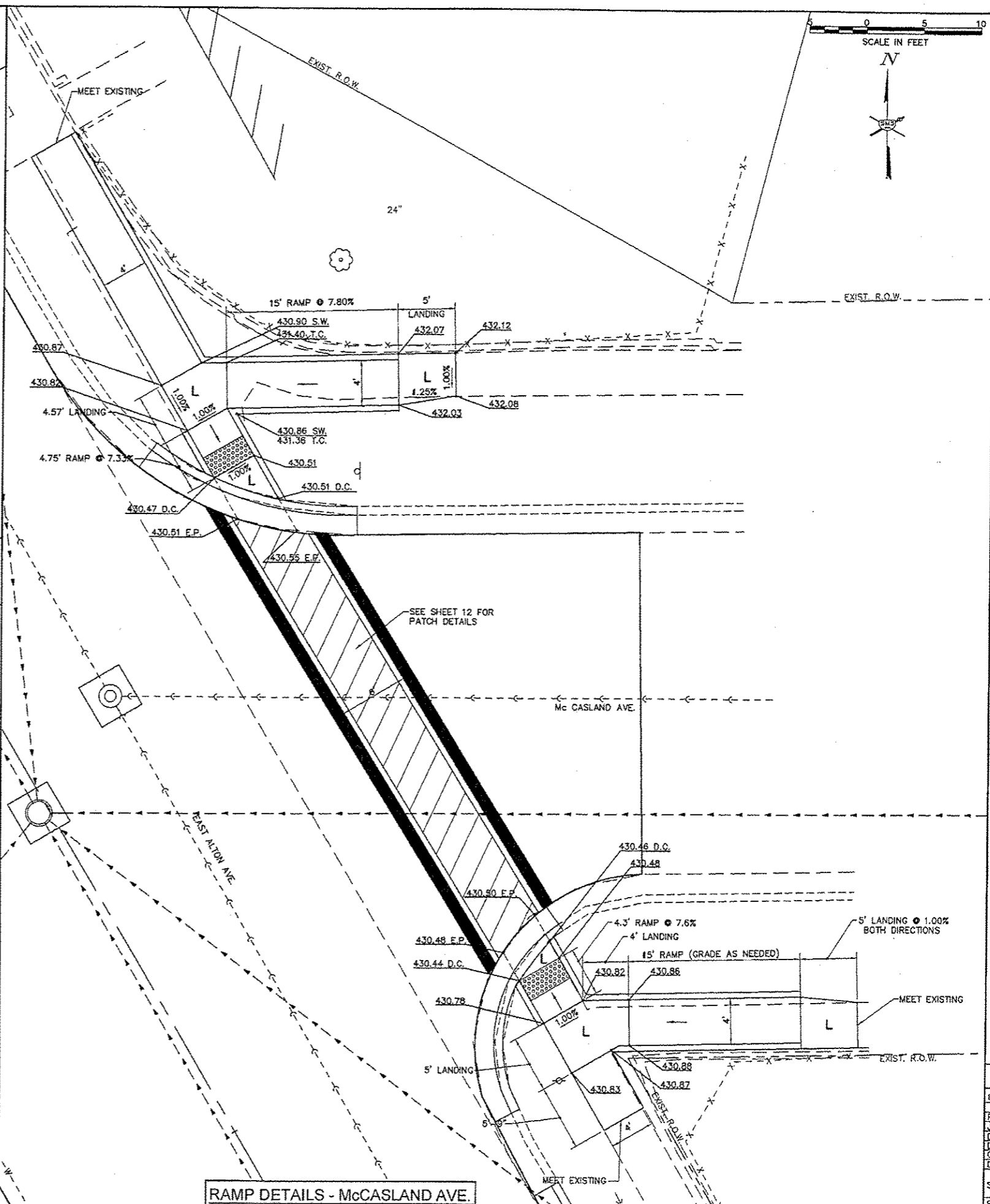
CONTRACT NO. 97624	
EA AVE PAVT MARK.DWG	
REF. BK.	PG.
JOB NO. 428892.1	
DSN. BY: DEG	
OWN. BY: COP	
CHK. BY: DEG	
DATE: JUNE, 2016	
SCALE: 1"=50'	
SHEET 10 OF 13	

Q:\CNSL_IP\PROJECTS\ALTON\428892\14-00049-00-RS\PAVEMENT MARKING\EA AVE PAVT MARK.DWG 9/16/2016 11:11:29 AM gtwat 11

Q:\CIVIL_3D PROJECTS\ALTON (428892.1) E ALTON AVE\Production Drawings\EA AVE RAMP DETAILS.dwg, 8/25/2016 9:01:17 AM, cpruit, 1:2



RAMP DETAILS - SCHOOL ST.



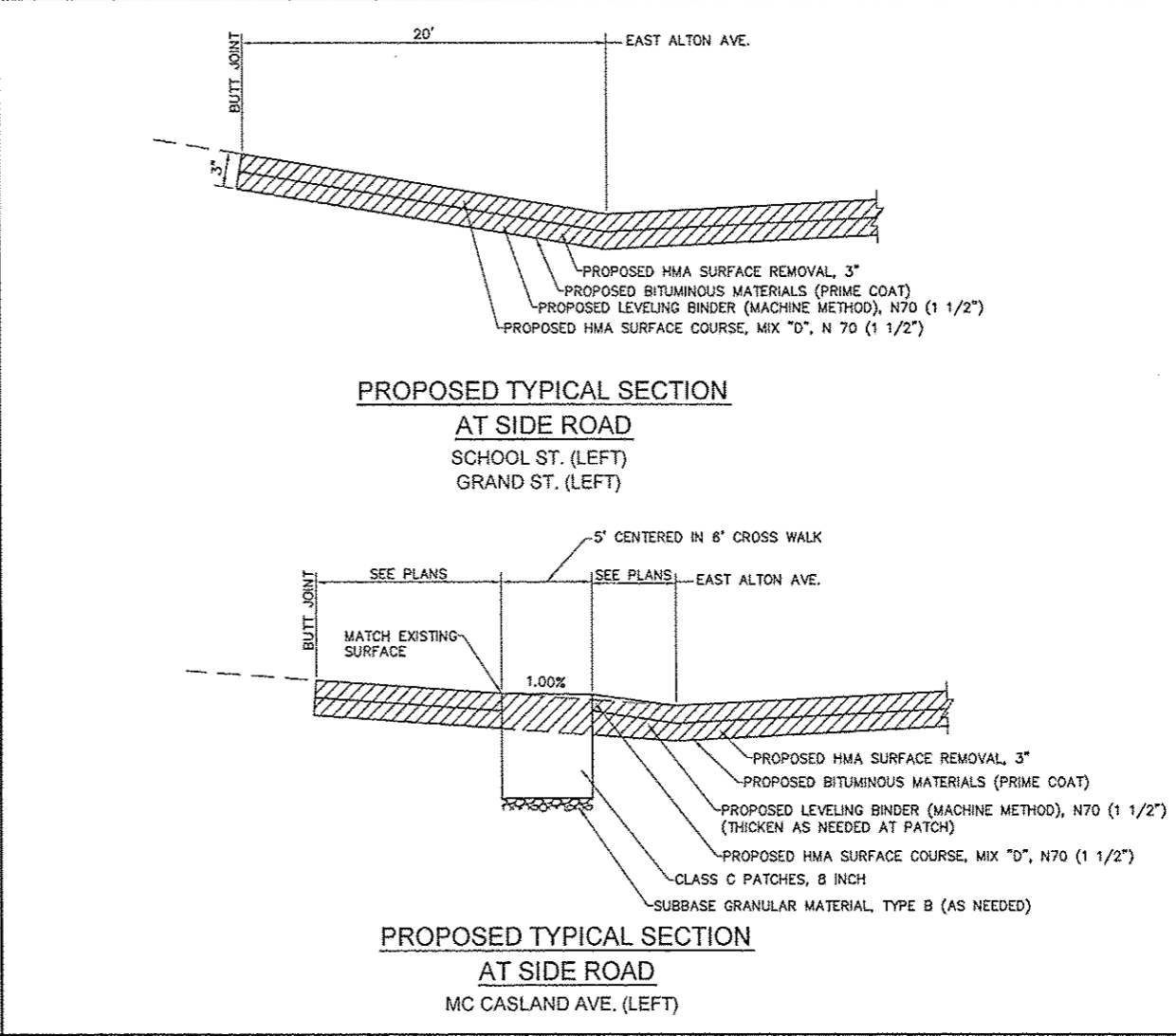
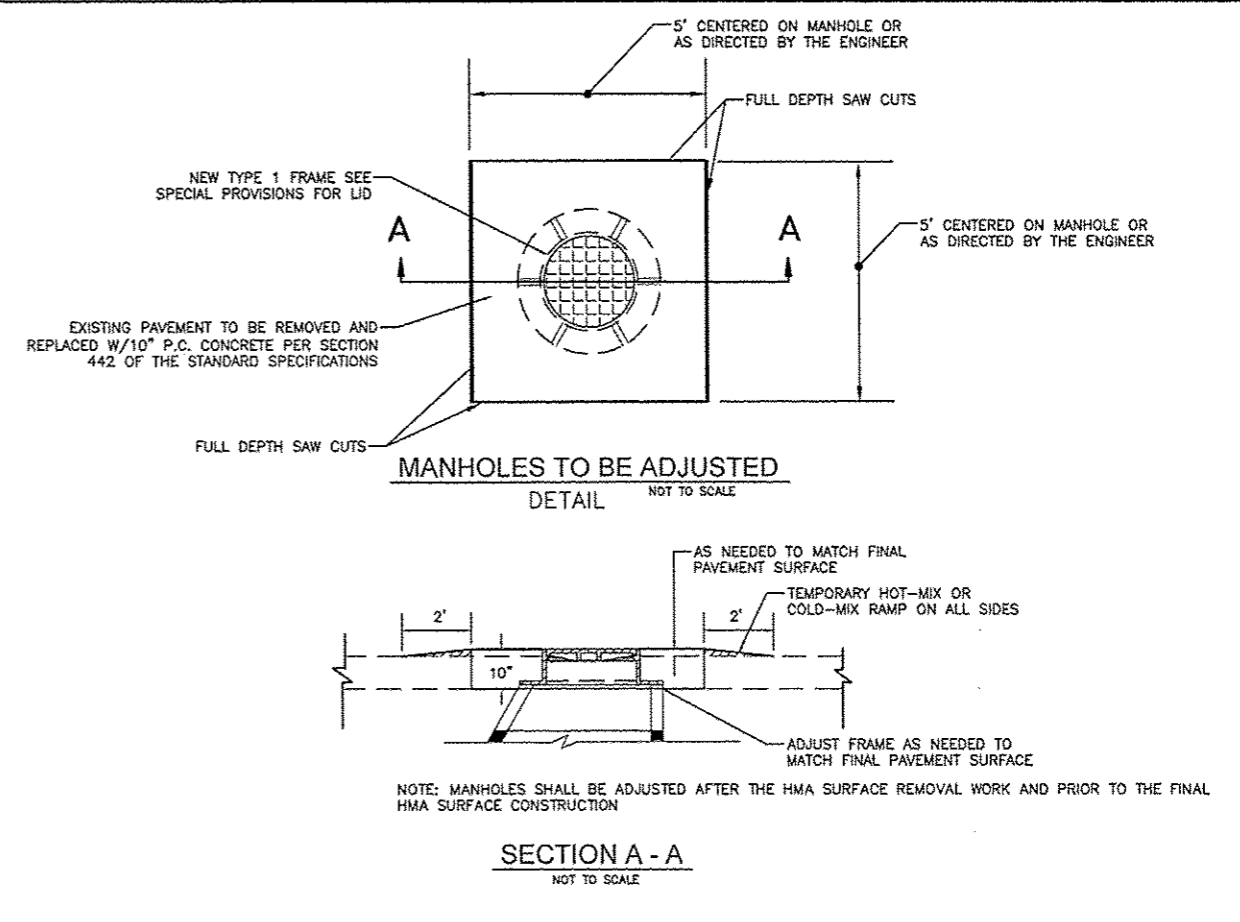
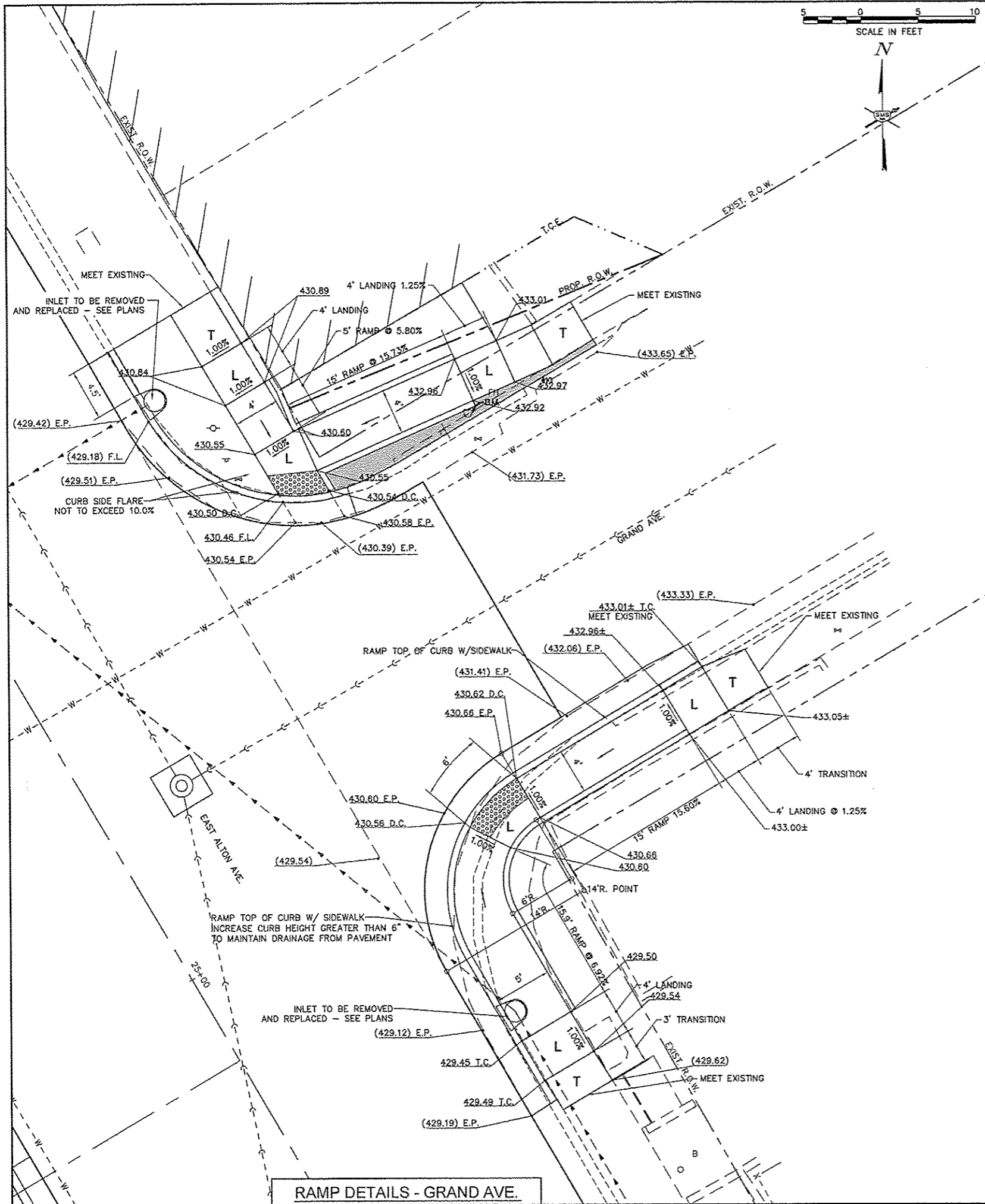
RAMP DETAILS - McCASLAND AVE.

NO.	DESCRIPTION

SMS ENGINEERS
Sheppard, Morgan & Schwaab, Inc.
 CONSULTING ENGINEERS AND LAND SURVEYORS
 215 Market Street, Alton, IL 62002 618/462-0755 E-mail: smi@smiengineers.com
 DESIGN FIRM # 184-000992

VILLAGE OF EAST ALTON, ILLINOIS
 SECTION 14-00049-00-RS
 EAST ALTON AVENUE
 CONSTRUCTION DETAILS

CONTRACT NO. 97624	
EA AVE RAMP DETAILS.DWG	
REF. BK.	PG.
JOB NO. 428892.1	
DSN. BY: DEG	
DWN. BY: CDP	
CHK. BY: DEG	
DATE: JUNE, 2016	
SCALE: 1"=5'	
SHEET 11 OF 13	

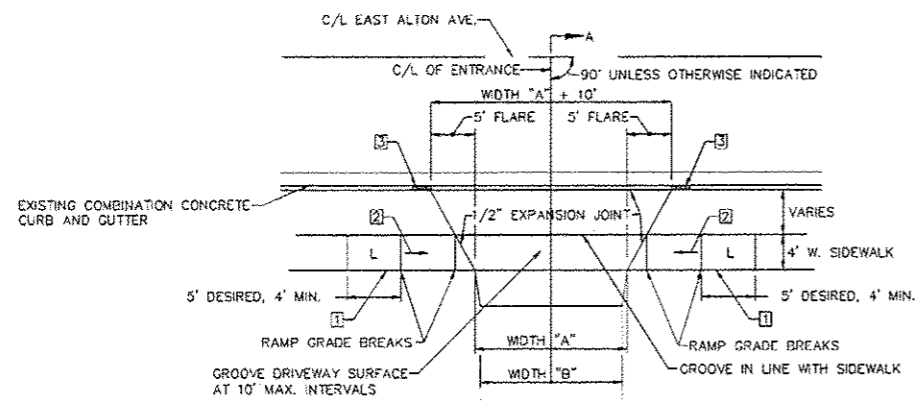


REVISIONS

SMS ENGINEERS
Sheppard, Morgan & Schwaab, Inc.
CONSULTING ENGINEERS AND LAND SURVEYORS
215 Market Street, Alton, IL 62002 618/662-8765 E-mail: mail@smsengineers.com
DESIGN FIRM # 184-000992

VILLAGE OF EAST ALTON, ILLINOIS
SECTION 14-00049-00-RS
EAST ALTON AVENUE
CONSTRUCTION DETAILS

CONTRACT NO. 97624
EA AVE RAMP DETAILS.DWG
REF. BK. PG.
JOB NO. 428892.1
DSN. BY: DEG
DWN. BY: CDP
CHK. BY: DEG
DATE: JUNE, 2016
SCALE: 1"=5'
SHEET 12 OF 13

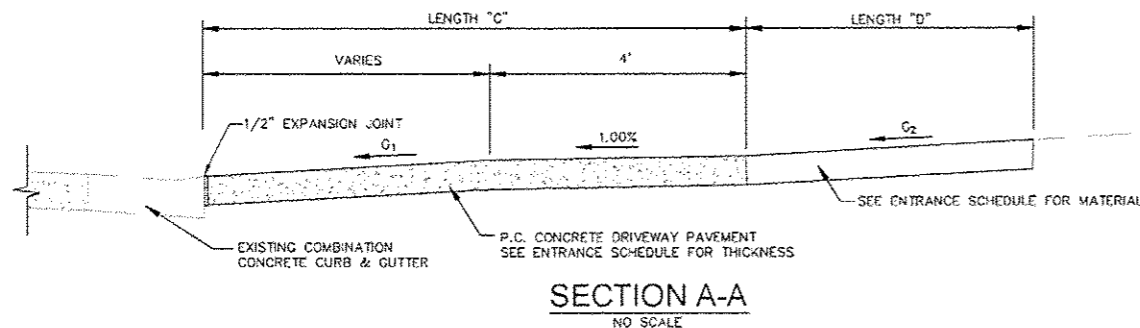


PLAN
TYPICAL ENTRANCE DETAIL
SCALE: 1"=10'

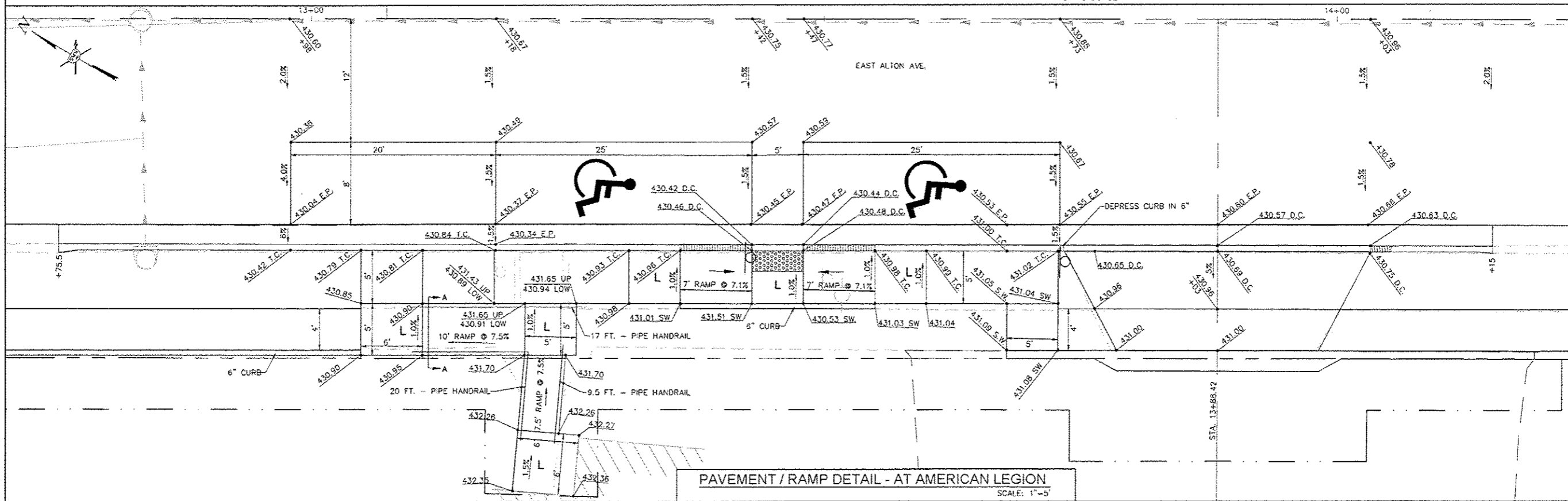
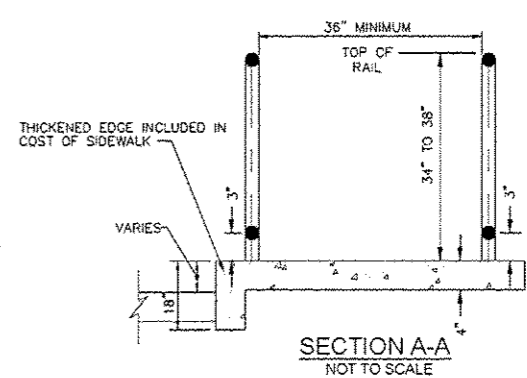
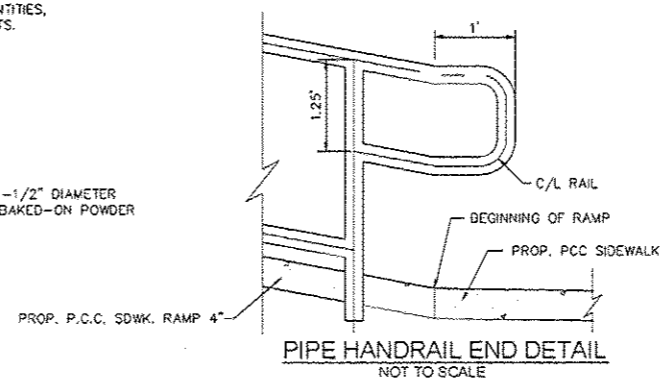
- NOTES:
- 1 UPPER LANDING ONLY REQUIRED IF RAMP EXCEEDS 5.00%
 - 2 RAMP 1:12 MAX.
 - 3 MEET EXISTING DEPRESSED CURB OR IF CURB AND GUTTER IS REMOVED AND REPLACED, THEN DEPRESS CURB IN 2"

ENTRANCE SCHEDULE													
STATION	TYPE OF ENTRANCE	WIDTH "A" (FT)	WIDTH "B" (FT)	LENGTH "C" (FT)	LENGTH "D" (FT)	G ₁ (%)	G ₂ (%)	P.C.C. DRIVEWAY PAVT. # (SQ. YDS)	P.C.C. DRIVEWAY PAVT. # (SQ. YDS)	INCIDENTAL HMA SURFACING (TONS)	AGGREGATE SURFACE CSE., TYPE B SPECIAL (SQ. YDS)	REMARKS	
11+56.27	RT C.E.	35	35	9.42	6	10	10	-	42.0	17.8	-	TCE REQUIRED	
12+12.21	RT C.E.	35	35	9.42	9	10	10	-	42.6	15.3	-	TCE REQUIRED, MODIFY SOUTH FLARE TO MEET SIDEWALK	
13+07.40	LT C.E.	20	13	9.42	0	10	10	-	28.6	-	18.5	TCE REQUIRED	
13+88.42	RT C.E.	20	20	9.42	2	5	4.5	-	25.9	4.7	-	TCE REQUIRED	
15+07.19	RT C.E.	19	19	9.42	0.58	10	-	-	25.3	-	3.5	-	
15+61.25	RT C.E.	35	35	9.42	5	10	10	-	42.0	-	21.8	TCE REQUIRED	
17+59.77	RT P.E.	13	13	9	1	9.4	8	18.1	-	-	1.1	MODIFY FLARE TO MEET EXISTING SOUTH SIDE	
18+13.56	RT P.E.	11	12	9	1	13	9	14.8	-	-	1.4	MODIFY FLARES TO MEET EXISTING ENTRANCE	
18+65.62	RT P.E.	11	15	9	1	16	10	15.1	-	-	2.0	MODIFY FLARE TO MEET EXISTING SOUTH SIDE	
19+56.26	RT P.E.	14.5	9	9	3	16	12	15.8	-	-	3.0	TCE REQUIRED, MODIFY FLARE TO MEET EXISTING SOUTH SIDE	
19+75.30	RT P.E.	12.8	10	9	5	16	12	15.8	-	-	6.7	TCE REQUIRED, MODIFY FLARE TO MEET EXISTING SOUTH SIDE	
20+24.48	RT P.E.	11	10	9	1	14	4.5	15.2	-	-	1.3	MODIFY FLARES TO MEET EXISTING SOUTH SIDE	
20+80.30	RT P.E.	10	10	9	1	12	12	15.0	-	-	1.2	-	
21+29.10	RT P.E.	10	10	9	1	12	13.5	15.2	-	-	1.2	-	
21+62.12	RT P.E.	13	13	9	1	15	15	17.7	-	-	1.8	MODIFY FLARE TO MEET EXISTING SOUTH SIDE	
22+24.40	RT P.E.	11	8.5	9	3	6	15	15.1	-	1.3	-	TCE REQUIRED	
23+23.74	RT C.E.	35	32	9	1	8.8	5.5	-	38.9	1.8	-	-	
25+11.15	RT C.E.	29	29	9.42	1	8	9	-	35.3	1.3	-	-	
25+72.75	RT C.E.	30	30	9.42	1	7.4	-	-	36.7	-	2.9	-	
26+82.50	RT C.E.	30	30	9.42	1	7	-	-	37.1	-	2.8	-	
TOTALS:								198	374	42	66		

NOTE: FOR DRIVEWAY REMOVAL QUANTITIES, SEE PLAN AND PROFILE SHEETS.



HANDRAIL NOTE:
1. HANDRAIL SHALL BE 1-1/2" DIAMETER STEEL, PRIMED WITH A BAKED-ON POWDER COAT FINISH.



PAVEMENT / RAMP DETAIL - AT AMERICAN LEGION
SCALE: 1"=5'

SHEPPARD, MORGAN & SCHWAAB, INC.
 CONSULTING ENGINEERS AND LAND SURVEYORS
 215 MARKET STREET ALTON, IL 62002 618/462-2755 E-mail: ems@smsengineers.com
 DESIGN FIRM # 184-000892

VILLAGE OF EAST ALTON, ILLINOIS
 SECTION 14-00049-00-RS
 EAST ALTON AVENUE
 CONSTRUCTION DETAILS

CONTRACT NO. 97624
 EA AVE DRIVE DETAILS 4.DWG
 REF. BK. PG.
 JOB NO. 428892.1
 DSN. BY: DEG
 DWN. BY: COP
 CHK. BY: DEG
 DATE: JUNE, 2016
 SCALE: AS SHOWN
 SHEET 13 OF 13

Q:\CSL_3D PROJECTS\ALTON_021012\14-00049-00-RS\DRIVE DETAILS 4.dwg 09/26/2016 11:04:41AM C:\msd11