

STATE OF ILLINOIS
DEPARTMENT OF TRANSPORTATION

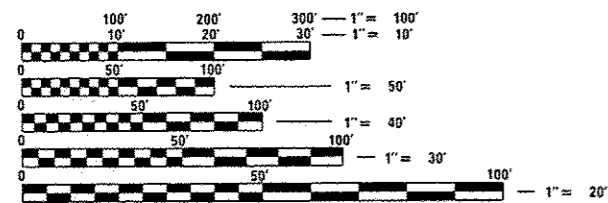
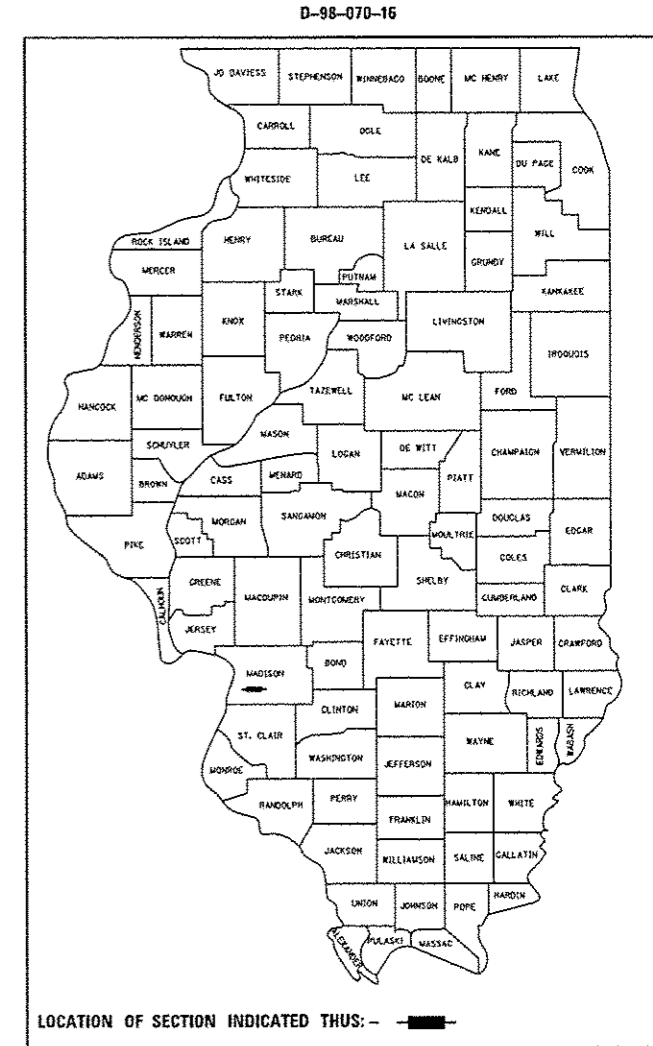
| F.A.P. RTE. | SECTION | COUNTY | TOTAL SHEETS | SHEET NO. |
|-------------|---------|----------|--------------------|-----------|
| 586 | 51-10M | MADISON | 4 | 1 |
| | | ILLINOIS | CONTRACT NO. 76J83 | |

FOR INDEX OF SHEETS, SEE SHEET NO. 2

PROPOSED HIGHWAY PLANS

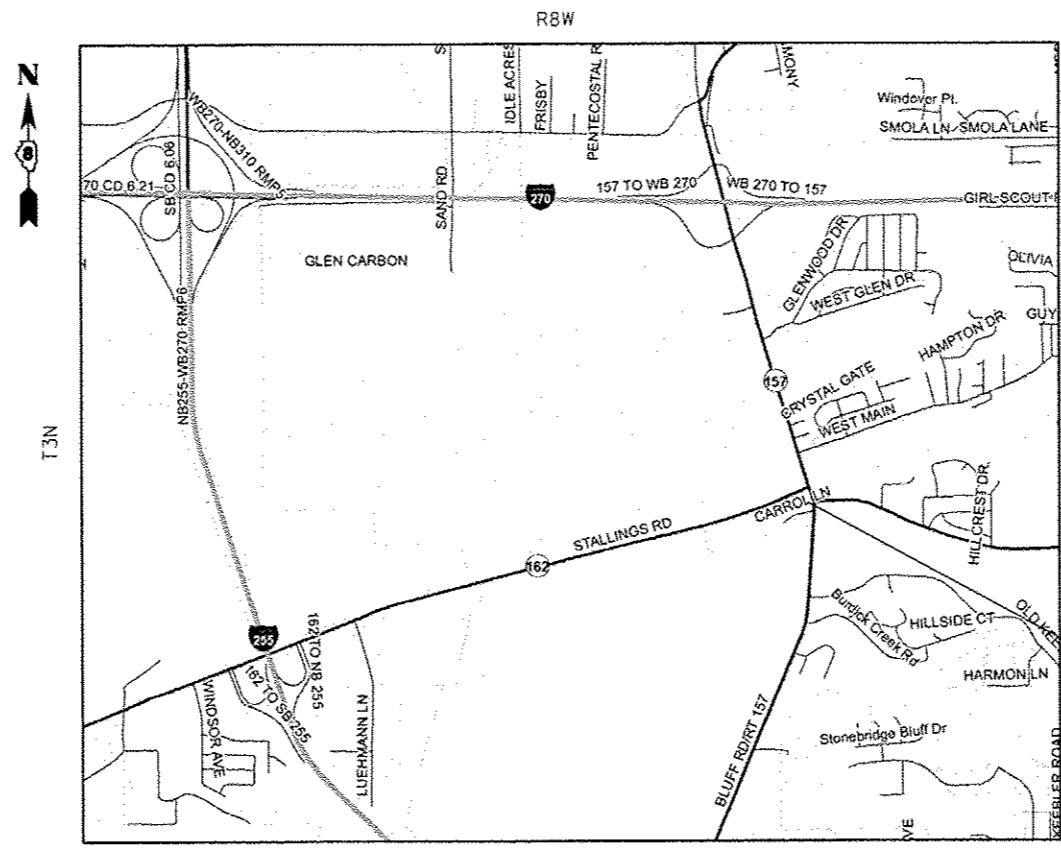
FAP ROUTE 586 (IL 162)
SECTION 51-1DM
DEMOLITION
MADISON COUNTY

C-98-063-16



FULL SIZE PLANS HAVE BEEN PREPARED USING STANDARD ENGINEERING SCALES. REDUCED SIZED PLANS WILL NOT CONFORM TO STANDARD SCALES. IN MAKING MEASUREMENTS ON REDUCED PLANS, THE ABOVE SCALES MAY BE USED.

J.U.L.I.E.
JOINT UTILITY LOCATION INFORMATION FOR EXCAVATION
1-800-892-0123
OR 811



PROJECT LOCATION
LAT: 38.74062
LONG: -90.00221

MAP NOT TO SCALE

PROJECT ENGINEER: HERVE GELIN (618) 346-3179
SQUAD LEADER: BILLIE OWEN (618) 346-3329

CONTRACT NO. 76J83

STATE OF ILLINOIS
DEPARTMENT OF TRANSPORTATION

SUBMITTED Aug. 5 2016
Jeffrey Z. Kain
REGIONAL ENGINEER

Sept 30 2016
Maureen M. Addis, P.E.
ENGINEER OF DESIGN AND ENVIRONMENT

Sept 30 2016
David W. Olsen
DIRECTOR OF PROGRAM DEVELOPMENT

PRINTED BY THE AUTHORITY
OF THE STATE OF ILLINOIS

INDEX OF SHEETS

1. COVER SHEET
2. INDEX OF SHEETS, HIGHWAY STANDARDS, GENERAL NOTES, AND COMMITMENTS
3. SUMMARY OF QUANTITIES
4. PLAN SHEET

GENERAL NOTES

1. ILLINOIS STATE LAW REQUIRES A 48-HOUR NOTICE BE GIVEN TO ALL UTILITIES WITHIN THE PROJECT AREA BEFORE DIGGING. FIELD MARKING OF FACILITIES MAY BE OBTAINED BY CONTACTING J.U.L.I.E. OR FOR NON-MEMBERS, THE UTILITY COMPANY DIRECTLY. AGENCIES KNOWN TO HAVE FACILITIES WITHIN THE PROJECT AREA ARE AS FOLLOWS:

- AMEREN ILLINOIS
- AT&T ILLINOIS
- CHARTER COMMUNICATIONS, INC.
- CONSOLIDATED COMMUNICATIONS
- VILLAGE OF GLEN CARBON
- ILLINOIS AMERICAN WATER COMPANY
- VILLAGE OF MARYVILLE
- MCLEOD TELECOMMUNICATIONS SERVICES, LLC
- SOUTHWESTERN ELECTRIC COOPERATIVE, INC.

MEMBERS OF J.U.L.I.E. CALL TOLL FREE (800) 892-0123 OR 811 AND ARE INDICATED BY *. NON-J.U.L.I.E. MEMBERS MUST BE NOTIFIED INDIVIDUALLY.

2. A QUANTITY FOR TWO APPLICATIONS OF MULCH, METHOD 2 HAS BEEN INCLUDED IN THIS CONTRACT. ONE APPLICATION OF MULCH IS TO BE PLACED OVER THE TEMPORARY SEEDING. THE SECOND APPLICATION WILL BE USED AFTER THE FINAL SEEDING OPERATIONS ARE COMPLETE.

STANDARDS
280001-07
701001-02
701006-05
701901-05

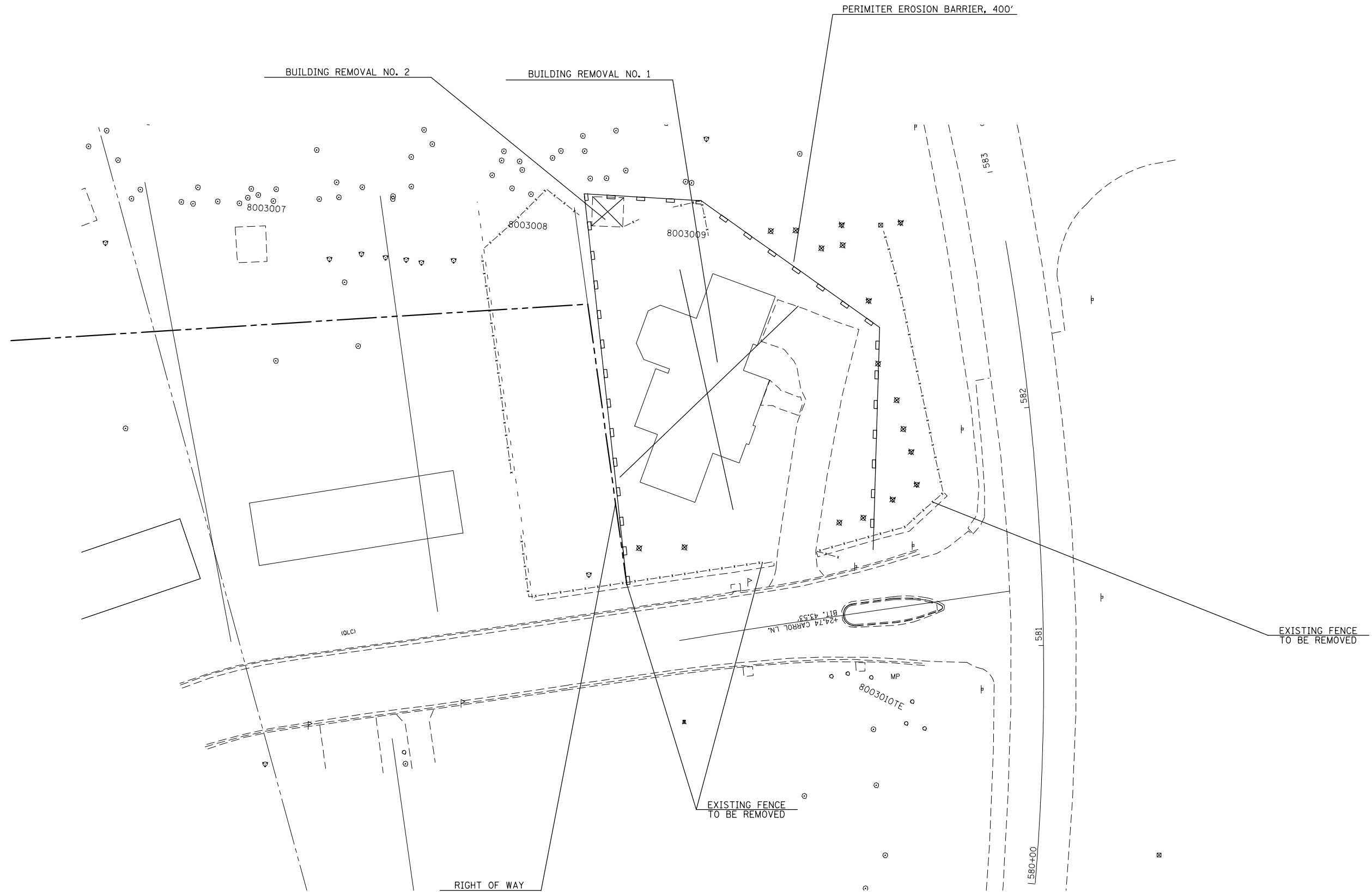
COMMITMENTS

TREE REMOVAL WILL NOT OCCUR FROM APRIL 1 THROUGH SEPTEMBER 30 DUE TO POTENTIAL INDIANA BAT HABITAT.

| | | | | | | | | | | |
|---|--|------------|-----------|---|--|--------------------|---------|---------|-----------------|--------------|
| FILE NAME = | USER NAME = challovesko | DESIGNED - | REVISED - | STATE OF ILLINOIS DEPARTMENT OF TRANSPORTATION | INDEX OF SHEETS, HIGHWAY STANDARDS GENERAL NOTES, AND COMMITMENTS | F.A.P. RTE. | SECTION | COUNTY | TOTAL SHEETS | SHEET NO. |
| pm\JL884EBIDINTEG\illinois.gov\PHDDT\06 | Documents\DOT Dff\2016\District 6\Projects\087-0000\0000000000\0876J83-shr-garnd | CHECKED - | REVISED - | | | 586 | 5J-1DM | MADISON | 4 | 2 |
| | | | | | | CONTRACT NO. 76J83 | | | | |
| Default | PLOT DATE = 8/4/2016 | DATE - | REVISED - | | | SCALE: | SHEET | OF | SHEETS | STA. |

PLS SEE DUA

| CODE NO. | ITEM | UNIT | TOTAL QUANTITY | 100% STATE ROADWAY | |
|----------|-----------------------------------|-------|----------------|--------------------|-------|
| | | | | 0044 | URBAN |
| 25000110 | SEEDING, CLASS 1A | ACRE | 0.5 | 0.5 | |
| 25000400 | NITROGEN FERTILIZER NUTRIENT | POUND | 32 | 32 | |
| 25000500 | PHOSPHORUS FERTILIZER NUTRIENT | POUND | 32 | 32 | |
| 25000600 | POTASSIUM FERTILIZER NUTRIENT | POUND | 32 | 32 | |
| 25000700 | AGRICULTURAL GROUND LIMESTONE | TON | 0.7 | 0.7 | |
| 25100115 | MULCH, METHOD 2 | ACRE | 0.75 | 0.75 | |
| 28000250 | TEMPORARY EROSION CONTROL SEEDING | POUND | 35 | 35 | |
| 28000400 | PERIMETER EROSION BARRIER | FOOT | 400 | 400 | |
| 67100100 | MOBILIZATION | LSUM | 1 | 1 | |
| Z0007601 | BUILDING REMOVAL NO. 1 | LSUM | 1 | 1 | |
| Z0007602 | BUILDING REMOVAL NO. 2 | LSUM | 1 | 1 | |
| | | | | | |
| | | | | | |
| | | | | | |
| | | | | | |
| | | | | | |
| | | | | | |
| | | | | | |
| | | | | | |
| | | | | | |



| | | | | | | | | | | | | |
|--|-------------------------------|------------|-----------|---|-------------------------------------|-----------------|--------------|---------------------------|---------|--------|-----------------|--------------|
| FILE NAME = | USER NAME = challandeske | DESIGNED - | REVISED - | STATE OF ILLINOIS DEPARTMENT OF TRANSPORTATION | PLAN VIEW PARCEL 8003009 | | | F.A.P. RTE. | SECTION | COUNTY | TOTAL SHEETS | SHEET NO. |
| p:\1\1084EBID\INTEG.illinois.gov\PIWIDOT\Documents\IDOT_Offices\District_8\Projects\D876J83-sht-plan.dwg | DRAWN | REVISION | REVISED | | 586 | 51-IDM | MADISON | 4 | 4 | | | |
| Default | PLOT SCALE = 100.0000' / 1IN. | CHECKED - | REVISED - | | CONTRACT NO. 76J83 | | | | | | | |
| | PLOT DATE = 8/4/2016 | DATE - | REVISED - | | SCALE: NONE | SHEET OF SHEETS | STA. TO STA. | ILLINOIS FED. AID PROJECT | | | | |